



CITY OF RANCHO PALOS VERDES

# CITY MANAGER'S WEEKLY ADMINISTRATIVE REPORT

**DECEMBER 9, 2020 (REPORT NO. 20-48)**

## TABLE OF CONTENTS

### CITY MANAGER - PAGE 4

- The City of Rancho Palos Verdes wishes all who celebrate a Happy Hanukkah!
- RPVtv Tribute to Outgoing Mayor John Cruikshank
- Letters to County Officials on Outdoor Dining Prohibition
- The Great Peninsula Takeout
- Help Document the King Tides December 13-15
- LASD Santa's Sleigh Ride Canceled
- COVID-19 Community Updates
  - COVID-19 Cases
- Information Technology
  - Monthly Statistics for City's Website for November 2020
- Emergency Preparedness
  - Home Fire Insurance Questions and Additional Resources from the California Department of Finance
  - Wildfire Preparedness Coordination with the City of Malibu and the City of Santa Rosa
  - Invitation to Virtual Meeting on Home Hardening Standards and Wildfire Catastrophe Modeling in Ratemaking
  - Monthly Disaster Preparedness Messaging- Courtesy of the RPV Emergency Preparedness Committee
  - Wildfire Preparedness
  - Sign up for Alert SouthBay
  - Emergency Preparedness Tips
    - Holiday Fire Safety Tips

- Public Safety
  - Weekly Crime Report Summaries
  - 10 Days of Holiday Safety
  - Practice Your 9PM Routine
  - Vacation Security Camera Loaner Program

## FINANCE - PAGE 22

- Announcing the NEW Interactive Monthly Financial Report
- Fiscal Health of California Cities Report FY 2018-2019
- Small Business Financial Assistance Plan Update

## PUBLIC WORKS - PAGE 30

- Initial Study Released Recommending the Preparation of an EIR for the Portuguese Bend Landslide Mitigation Project
- Coastal Bluff Fence Replacement Project
- Extra Pre-Rainy Season Street Sweeping
- Outreach for Mandatory Commercial Recycling
- Abandoned Items in the Parkways or Sidewalks
- Acacia Removal Along Burma Road
- Maintenance Activities

## COMMUNITY DEVELOPMENT - PAGE 42

- Public Notice Issuance for Grading Permit at Green Hills Memorial Park (PLGR2020-0015)
- Public Notice Issuance for Ladera Linda Community Center's Conditional Use Permit
- Complete Application for Subdivision Proposal at 6001 Palos Verdes Drive South (Point View)
- Onsite Pre-Grading Meeting for Residential Construction at 6001 Palos Verdes Drive South (Point View)
- Raising Cane's Project Webpage is Now Available
- Regional Housing Needs Assessment (RHNA) Update
- Holiday Building Inspection Schedule
- City Manager Letter to FAA Concerning Jet Overflights
- Planning Commission Follow-up Agenda

## RECREATION AND PARKS - PAGE 46

- Holistic Preserve Parking Report
- New Safety Measures for Outdoor Recreation and Private Gatherings
- Elf in the Park
- The REACH Program is Back!
- Something to Yelp About!
- Filming Update
- Preserve and Beach Weekend Activity: Saturday, December 5 & Sunday, December 6
- Parks and Preserve Weekend Report

## CORRESPONDENCE AND INFORMATION RECEIVED (See Attachments)

- Calendars – Page 53
- Tentative Agendas – Page 56
- Channel 33 and 38 Schedule – Page 61
- Channel 35 and 39 Schedule – Page 62
- Crime Reports and Sheriff's Department PSA – Page 63
- PRA Log (Open Requests) – Page 67

## CITY MANAGER'S OFFICE



**The City of Rancho Palos Verdes wishes all who celebrate a  
Happy Hanukkah!**

### **RPVtv Tribute to Outgoing Mayor John Cruikshank**

In an RPVtv tribute, the City of Rancho Palos Verdes says "thank you" to outgoing Mayor John Cruikshank for serving as the City's top leader during a year that included the pandemic of 2020. Watch the video on RPVtv's YouTube channel at:

[youtu.be/pBUmkEJKxjk](https://youtu.be/pBUmkEJKxjk).



## Letters to County Officials on Outdoor Dining Prohibition

Following authorization by the City Council in closed session, last week, Staff sent a letter to the Los Angeles County Board of Supervisors and Public Health Director Dr. Barbara Ferrer requesting the board rescind its decision to prohibit outdoor dining in response to a surge in COVID-19 cases (see attachments). The letter noted a lack of scientific evidence to support the modified order to shut down outdoor dining and stressed that tens of thousands of jobs and businesses have been jeopardized by the prohibition. The City also urged the county to take a localized approach to reopening, noting that the Department of Public Health divides the county into eight Service Planning Areas (SPAs) to better serve the needs of residents across the county, but has imposed the same COVID-19-related restrictions across the county.

A similar letter signed by the mayors of the four Peninsula cities was sent to the Board of Supervisors on December 7 (see attachments). The following day, Los Angeles Superior Court Judge James Chalfant issued a tentative ruling on a legal challenge to the county's order prohibiting outdoor dining from the California Restaurant Association. The ruling tentatively limits the order to be in effect until December 16 and requires the county to provide a risk-benefit analysis to extend the order. It should be noted, however, that outdoor dining will remain prohibited until the state's Regional Stay Home Order, which overrides the county order, is lifted. Read the tentative ruling at the following link: <http://www.lacourt.org/tentativeRulingNet/ui/Result.aspx?Referer=Index>

Staff will continue to monitor restrictions and reopening plans.



## The Great Peninsula Takeout

All residents are encouraged to participate in **The Great Peninsula Takeout**, a Peninsula-wide effort to support local restaurants. Join our community in this "Takeout Tuesdays and Takeout Thursdays" initiative by posting on social media and inviting friends and neighbors to order takeout! Check the [Open for Business page](#) on the City website for a list of local restaurants offering takeout, delivery and curbside pickup.



Are you a Peninsula restaurant offering takeout, delivery, curbside pickup or drive-thru service? Let us know! Email info to [mbright@rpvca.gov](mailto:mbright@rpvca.gov).



## Help Document the King Tides December 13-15

The California Coastal Commission is calling on the public to help photograph upcoming King Tides for the [California King Tides Project](#).

A “King Tide” is a non-scientific term used to describe very high tides caused when there is an alignment of the gravitational pull between sun, moon, and Earth. When King Tides occur during floods or storms, water levels can rise higher and have the potential to cause great damage to the coastline and coastal property.

Documenting these tides helps us preview the impacts of sea-level rise and understand how our shoreline is affected by high water today.

**The next King Tides will arrive December 13-15.** If you're able to safely take photos at the coast during King Tides you will be contributing to an important community science effort. Find your [local King Tide times](#) and learn how to [upload your photos](#) on the California Coastal Commission website at [coastal.ca.gov/kingtides](https://coastal.ca.gov/kingtides) or with a [free app](#).

## LASD Santa's Sleigh Ride Canceled

On December 7, the Lomita Sheriff's Station [announced on Facebook](#) that it had canceled this year's Santa's Sleigh Ride through neighborhoods in the station's service area, including Rancho Palos Verdes, due to the COVID-19 pandemic. Thank you, Lomita Station, for brightening the holidays for us through the years and keeping us safe, and we look forward to Santa's return!

Read the announcement below:

*“Unfortunately due to the myriad issues surrounding coronavirus we have had to cancel our Santa's Sleigh operation this year. We had several ideas that were extensively discussed between those that run the sleigh each and every year, and the potential options that were explored were not in keeping with the best interests of the public, our employees, and most of all the children that we're out there for.*

*On a personal note, this social media deputy has participated in Santa's Sleigh in 11 of the last 14 years. I know how much it means to the communities, and it is far and above my favorite three weeks of the year. I'm extremely disappointed that*

*we won't be doing it this year, but sometimes the right decision is the hard decision.*

*Hopefully with the different vaccines on the horizon, we won't run into this issue again next year, and we'll be back!*

*Make sure the little ones know that even though Santa may not be driving through their neighborhood before Christmas, he will most certainly be out Christmas Eve into Christmas Morning. We have it on good authority that Santa is immune to coronavirus!"*

## COVID-19 Community Updates

The City continues to monitor the spread of the novel coronavirus in Los Angeles County and distributes **COVID-19 Community Updates via listserv and social media on Thursdays**, though any major announcements in between will be shared with the community. The newsletter provides a range of information, such as up-to-date case numbers for the City, and the neighboring Peninsula cities, along with information on resources and services available.



If you haven't done so already, sign up for COVID-19 Community Updates by subscribing to the Breaking News listserv at [rpvca.gov/notify](http://rpvca.gov/notify). An archive of COVID-19 Community Updates is available at: <http://rpvca.gov/1304/Community-Updates>

A webpage on the City website with coronavirus updates, resources, and information is continuously being updated at [rpvca.gov/coronavirus](http://rpvca.gov/coronavirus)

And be sure to follow the City on [Nextdoor](#), [Facebook](#), [Twitter](#), and [Instagram](#)!

## COVID-19 Cases

As of December 8, there are 466,321 confirmed cases of COVID-19 across Los Angeles County (population 10.17 million), including the South Bay, so the public should not think one location is safer than another and everyone should be aware and practice physical distancing. The total includes 497 cases in Rancho Palos Verdes (population 41,731), 160 in Palos Verdes Estates (population 13,190), 84 in Rolling Hills Estates (population 8,066), 16 in Rolling Hills (population 1,874), and 24 in the unincorporated areas of the Peninsula. Countywide, 8,000 people have died.

According to the Department of Public Health, 11 deaths have been reported in Rancho Palos Verdes. The City extends its deepest condolences to the families of these residents.

\*Please note that the total number of deaths reported in the City recently decreased by two deaths. According to the Department of Public Health, this most commonly occurs when a death is reported with an address in one jurisdiction and once further information is gathered, it is determined to be in another jurisdiction.\*

For a list of cases broken down by city, demographic characteristics, and settings, visit: <http://publichealth.lacounty.gov/media/Coronavirus/locations.htm>

For an interactive dashboard with maps and graphs showing testing, cases and death data by community, poverty level, age, sex and race/ethnicity visit: [http://dashboard.publichealth.lacounty.gov/covid19\\_surveillance\\_dashboard/](http://dashboard.publichealth.lacounty.gov/covid19_surveillance_dashboard/)

An interactive dashboard of COVID-19 cases in the South Bay maintained by the City of Torrance is available at [bit.ly/2XB1fv1](http://bit.ly/2XB1fv1). The dashboard reflects information sourced by the Los Angeles County Department of Public Health.



## Monthly Statistics for City's Website for November 2020

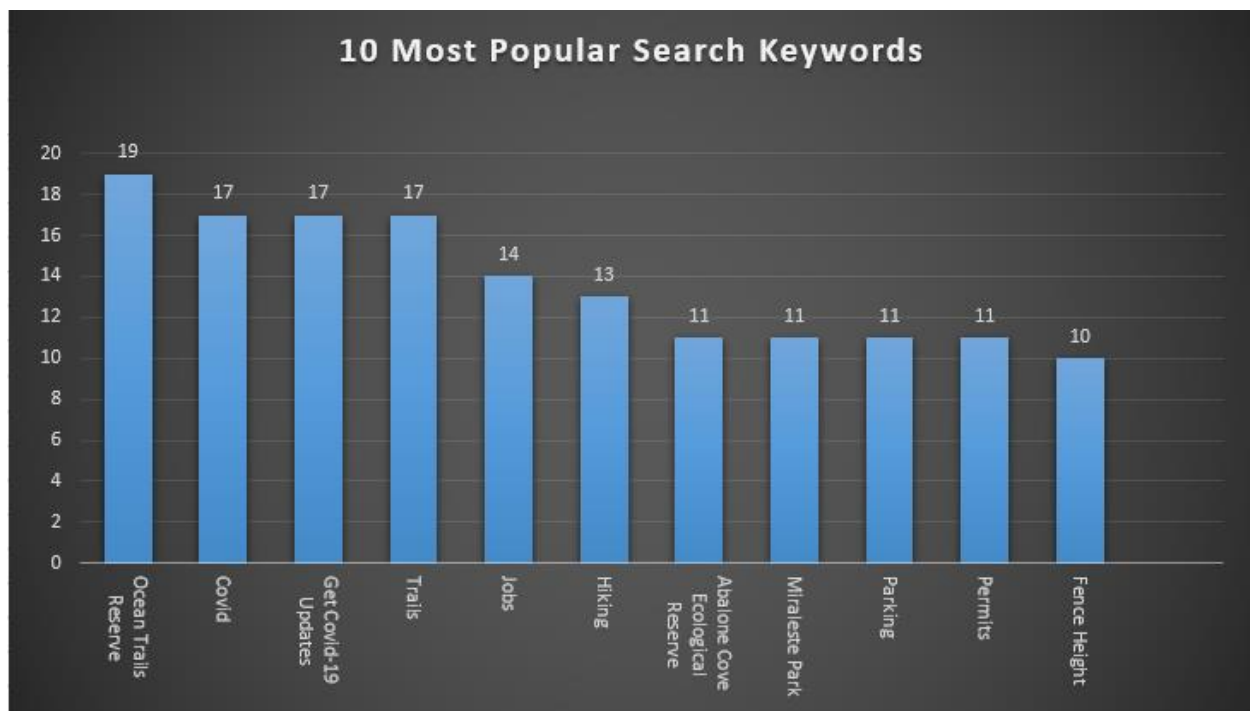
Have you ever wondered how many people visit RPV's website, what City the viewer is from, and what is the most popular thing they are looking for? Every month, the IT



department includes a brief summary of the key indicators in relation to the [www.rpvca.gov](http://www.rpvca.gov) website in this weekly update. The graph below shows a breakdown of what the RPV website visitors searched during the month of November:

The graph below shows a breakdown of what the RPV website visitors searched for:

Figure #1 – 10 Most Popular Search Keywords



As you can see, 19 guests searched “Ocean Trails Reserve”, 17 guests searched for “Covid” and 17 searched for “Get Covid-19 Updates”. This information can help determine the areas of interest for our guest but also if our website is user friendly, and monitor trends.

Figure #2 – Most Popular Pages

The RPV website has many subpages that provide extensive information on a particular subject related to the City. In November, the Main Page ([www.rpvca.gov](http://www.rpvca.gov)) is a clear winner with 4,539 visits! Overall, we have seen a drop-off compared to October.

There is a slight decline when comparing to the month of October.

PAGE DESCRIPTION	UNIQUE PAGEVIEWS	Month to Month Change
------------------	------------------	-----------------------

Main Page	4,539	-11%
COVID-19 Testing	3,577	+23%
Information on Coronavirus (COVID-19)	2,782	-2%
Abalone Cove Shoreline Park	2,115	-2%
Trail Conditions & Alerts	1,925	-3%

Below is an interesting table showing the breakdown of visitors by their physical location. This information is gathered based on the visitor's IP address.

Figure #3 - Top 10 Visitor Locations




Visitor Location (City)	Visits
 Rancho Palos Verdes, California, United States	2,519
 Los Angeles, California, United States	1,963
 San Pedro, California, United States	1,482
 Torrance, California, United States	1,027
 Diamond Bar, California, United States	816
 La Canada Flintridge, California, United States	688
 Irvine, California, United States	666
 Tehachapi, California, United States	666
 Long Beach, California, United States	656
 Redondo Beach, California, United States	636

And finally, a brief breakdown of what kind of Internet-enabled device was used to access City's website. The City will continue to make efforts to make the City's website more mobile responsive and to provide more mobile friendly ways to access City's information (stay tuned for a City mobile app in Winter of 2021!)

Figure #4 - Top 3 Type of Devices Used to access City's Website:

DEVICE TYPE	TOTAL VISITS
-------------	--------------



 Desktop	18,529
 Smartphone	17,992
 Tablet	1,379

## Emergency Preparedness



### Home Fire Insurance Questions and Additional Resources from the California Department of Finance

In coordination with the Asm. Al Muratsuchi's Office, City staff was provided the following contact information for the California Department of Insurance.

**Email:** [ombudsman@insurance.ca.gov](mailto:ombudsman@insurance.ca.gov)

**Phone:** (916) 492-3457

Residents are encouraged to contact the California Department of Insurance (DOI) with any home fire insurance questions they may have. Additionally, the Department of

Insurance is available to provide additional resources and guide residents through dealing with their insurance companies. City staff will continue to outreach to the Department of Insurance and insurance companies on what the City can do to avoid premium hikes and reduced homeowner insurance availability for residents, and provide relevant information on the City's website as a resource.

### **Wildfire Preparedness Coordination with the City of Malibu and the City of Santa Rosa**

On December 2 and 4, City Staff met with the Environmental Sustainability Director for the City of Malibu and the Chief Building Official for the City of Santa Rosa, the sharing of lessons learned in establishing a streamlined rebuilding permit process following a wildfire disaster. At these meetings, the City of Malibu and the City of Santa Rosa shared with City Staff best practices, lessons learned, and community development issues in the rebuilding of homes following the Tubbs and Woolsey wildfires. City staff will continue to outreach to cities that have been recently affected by wildfires and or disasters to glean information on lessons learned on best practices in establishing a streamlined wildfire rebuilding permit process before a wildfire incident.



### **Invitation to Virtual Meeting on Home Hardening Standards and Wildfire Catastrophe Modeling in Ratemaking**

On December 10, California Insurance Commissioner Ricardo Lara will host a virtual meeting with fire and home hardening experts and wildfire catastrophe modeling experts regarding potential administrative and regulatory changes to incentivize home hardening and discuss models based on fire science to protect lives and property (see attachments).

The purpose of this workshop is to provide a technical, fire science-based conversation as the Commissioner considers further administrative actions. Specifically, this meeting will explore the extent to which wildfire catastrophe modeling as a ratemaking tool can impact market competition and insurance availability.

City Staff will be attending this virtual meeting to glean a better understanding of how the City can avoid premium hikes and reduced insurance availability for residents and neighborhoods interested in fire hardening homes. A follow-up report will be provided.

### **Monthly Disaster Preparedness Messaging- Courtesy of the RPV Emergency Preparedness Committee**

The City of Rancho Palos Verdes Emergency Preparedness Committee will be providing monthly emailing messaging to residents with emergency preparedness information and educational materials (See attachments). To receive the Committee's monthly messaging, be sure to sign up for the "Emergency Notifications" city listserv at [rpvca.gov/notify](http://rpvca.gov/notify). For additional information about emergency preparedness in the City of Rancho Palos Verdes visit the City's website at [www.rpvca.gov/Emergency](http://www.rpvca.gov/Emergency).

### **Wildfire Preparedness**

With an uptick in recent brush fires across the Los Angeles County region, Peninsula residents are reminded to be on heightened alert and to be prepared for wildfire.

- If you see something, say something. Report any sign of smoke or fire immediately to your local fire department by dialing 9-1-1. If you dial 9-1-1 from your cellphone, be sure to know your location.
- Have your Ready! Set! Go! Wildfire Action Plan in place. It is critical for residents to be familiar with the Ready! Set! Go! program that provides important pre-planning and evacuation information.
- Download the Ready! Set! Go! Wildfire Action Plan and view informational how-to videos, visit [fire.lacounty.gov/rsg](http://fire.lacounty.gov/rsg)
- Find more preparedness tips at [ready.lacounty.gov/fire](http://ready.lacounty.gov/fire)
- Sign up for Alert SouthBay emergency alerts by texting "alertsb" to 888-777 Stay connected and get updates from the City by following RPV on [Nextdoor](#), [Facebook](#), [Twitter](#) and [Instagram](#).

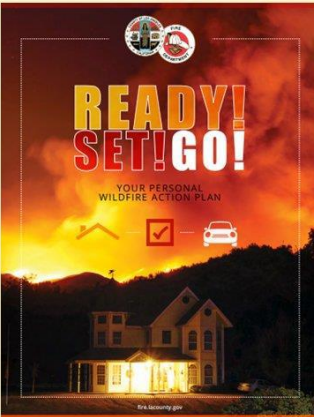
## Ready! Set! Go! and Red Flag Warnings

Connecting the Red Flag Warning Program to Ready! Set! Go! To Better Ensure Public Response to Evacuations

**Ready!** Safeguard your home. Building and maintaining your defensible space.

**Set!** *Fire Weather Watch or Red Flag Warning*  
Assemble your emergency supply kit.  
*Be set to evacuate when told to do so!*

**Go!** Follow evacuation instructions of local officials when wildfires strike!



  NWS Los Angeles/Oxnard CA

Follow us:  

## Sign Up for Alert SouthBay

Alert SouthBay is a multi-jurisdictional emergency notification system used by 13 South Bay cities – including Rancho Palos Verdes -- to keep our communities informed about disasters and emergencies with uniform, expeditious alerts.

Alert SouthBay is an opt-in system using the Everbridge software application. Similar to Nixle alerts, Everbridge sends notifications via email, text message, cellular, and landline phones. Users can subscribe to receive alerts from multiple South Bay cities. If you live in Rancho Palos Verdes, for example, but work in Torrance, you can subscribe to alerts from both cities.

Everbridge is the City's primary vehicle for emergency communication. Users can sign up by:

- Texting "alertsb" to 888-777, which returns a link to register for Everbridge (for COVID-19-related alerts, text the keyword "cv19rpv")
- Registering online at [alertsouthbay.com](https://alertsouthbay.com)
- Downloading the free [Everbridge app](#) on an iOS or Android device from the [App Store](#) or [Google Play](#)





## EMERGENCY PREPAREDNESS TIPS

### Holiday Fire Safety Tips

As residents prepare for the holiday season, the City wishes to remind the community of the following important fire prevention tips. According to the National Fire Protection Association (NFPA), [44% of holiday home fires](#) start when decorations are too close to a heat source, like a candle.

To ensure that the festivities are both happy and safe, here are some useful holiday season fire safety tips from NFPA:

### **Christmas Tree Safety:**

- Choose a tree with fresh, green needles. The needles should not fall off when touched.
- Cut two inches off the bottom of the trunk.
- Place the tree a minimum of three feet away from any heat source, including fireplaces, radiators, candles, heat vents and lights.
- Do not place the tree in an area where it may be blocking an exit.
- Add water to the tree stand daily.
- Check whether your string lights are intended for indoor use and use lights that have the label of a recognized testing laboratory.
- Check your holiday lights to make sure they are not worn and do not have broken cords or loose bulb connections. Review the manufacturer's instructions for the number of light strands to connect.
- Never decorate a tree with lit candles.
- Always turn off the lights on your tree before going to bed or leaving home.
- Dispose of your tree after Christmas or when it becomes dry. Dried-out trees are a fire hazard. Do not keep a tree that has become dried-out in your home or garage or lean it up outside against your home.

### **Candle Safety:**

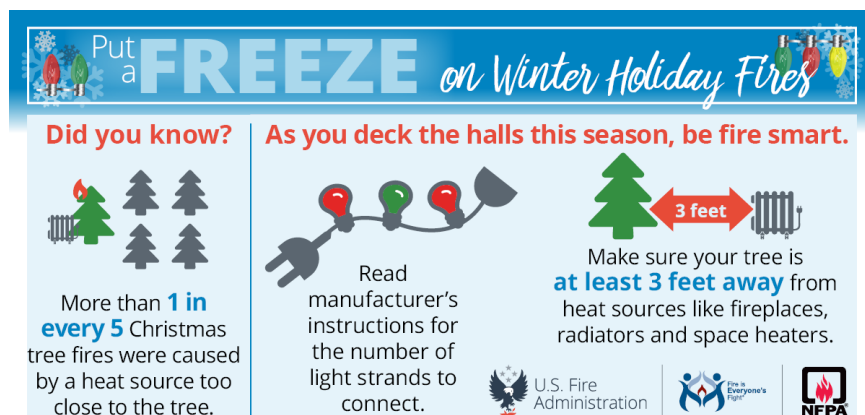
- Keep children and pets away from lit candles. Consider using battery operated candles around children.
- Place candles in a sturdy candle holder and on a surface that is also sturdy and uncluttered.
- Place candles a minimum of one foot away from anything flammable.
- When lighting a candle, take care to keep your hair and loose clothing away from the flame.
- Do not burn a candle all the way down. Before it gets too close to the holder or container, put it out.
- Never use candles if a member of your household uses oxygen.
- Matches and lighters should be stored in a locked cabinet.
- An adult should supervise any time candles are being used.
- Do not pass handheld candles from one person to another.
- Do not place lit candles in windows where a curtain or blind could catch fire.
- Blow out candles before you leave a room or go to sleep.
- Avoid using candles in areas where people may fall asleep, such as bedrooms.
- Residents are reminded to test their smoke alarms monthly.

### Additional Safety Tips for Decorating:

- Seek out holiday decorations that are flame resistant.
- Hang lights using clips, not nails, so that the cords do not get damaged.
- Do not place decorations in the way of windows and doors.
- Stay in the kitchen anytime you are cooking on the stovetop.
- Before going to sleep or leaving your home, turn off all light strings and decorations.
- If there are small children in the home, take special care to avoid heavy, sharp or breakable decorations. And be sure children can't reach decorations with small removable parts that can be swallowed or inhaled.
- When decorating outside, keep ladders and decorations away from overhead power lines. Ensure the ladder is securely placed on the ground before climbing.
- Use heavy-duty extension cords, and only use cords outdoors if they are designated for outdoor use. Avoid overloading extension cords by using no more than three sets of standard lights per cord.
- Outdoor lights and inflatable decorations should be plugged into circuits protected by ground fault circuit interrupters (GFCI). GFCIs help prevent electric shock by breaking the circuit when differences in the currents of hot and neutral wires occur.
- Use a timer or turn off lights before going to bed, or if you will be away from home.

### Additional Resources:

- [Christmas Tree Fires \(Video\)](#)
- [Deck the Halls with Fire Safety \(Video\)](#)
- [FEMA Holiday Fire Safety](#)
- [Red Cross Holiday Fire Safety](#)
- [Los Angeles County Fire Department Holiday Safety](#)







## **Weekly Crime Report Summaries**

The City continues to provide its residents with crime report summaries when they are made available. These weekly summaries include information about reported crimes and arrests served by the Lomita Sheriff's Station, including the City of Rancho Palos Verdes. The summaries are updated on the City's website, distributed via Nextdoor and the Public Safety Alerts listserv, and included in the Weekly Administrative Report (see attachments).

These summaries can be found on the City website under City Services > Public Safety > Law Enforcement > Crime Reports – Weekly Summaries.

<http://rpvca.gov/1030/CrimeReports---Weekly-Summaries>

Additionally, the Los Angeles Sheriff's Department maintains a website mapping incidences of Part 1 Crimes within its jurisdiction, including the City of Rancho Palos Verdes. To view the City's incidences on the website, please visit:

<https://www.crimemapping.com/map/agency/304>

On the website, you may view incidences from other cities and jurisdictions as well. Please visit the website and follow instructions as given:

<https://www.crimemapping.com/>

## **10 Days of Holiday Safety**

Presenting – the 10 Days of Holiday Safety! Keep an eye on the City's social media accounts over the next two weeks for public safety tips each day. The campaign officially begins tomorrow, but here is a sneak preview:

Introducing 10 Days of Holiday Safety Tips: See Something Say Something! Be aware of your surroundings. Protecting your home and community is a shared responsibility. If you see suspicious activity, contact the Lomita Sheriff's Station at 310-539-1661. Share these safety tips with friends and neighbors!



## Practice Your 9PM Routine

Every night at 9:00PM, the community is encouraged to lock up property, turn on lights, and bring in valuables to reduce the likelihood of falling victim to property crimes. Lock all doors and windows, including garage doors, turn on lights or set them on a timer if you plan to be away, and avoid leaving valuables in visible areas. These actions help deter burglars and may help prevent residential burglaries.

Be aware, and if you see something suspicious, say something!



### **Vacation Security Camera Loaner Program**

With the holidays right around the corner, the City encourages video/audio recording devices with security footage capabilities as an additional measure of home protection. For RPV residents who may be away from home for an extended period, the City offers a Vacation Security Camera Loaner program. This program allows residents to borrow a Ring Spotlight Camera for short-term use. For more information, please visit the City website: <http://www.rpvca.gov/1118/Vacation-Security-Camera-Loaner-Program>

### **Attachments:**

December 4 letter to county officials – Page 69

December 7 letter to county officials – Page 76

Wildfire Town Hall Department of Insurance Presentation – Page 80

Invitation to Virtual Meeting: Home Hardening Standards and Wildfire Catastrophe Modeling in Ratemaking – Page 84

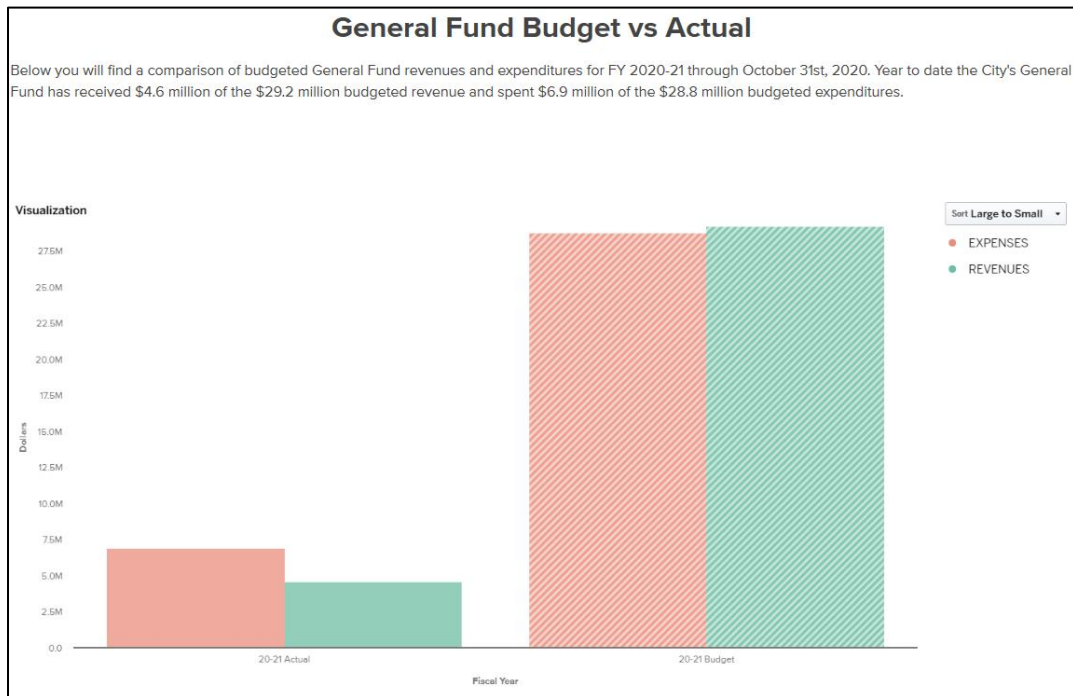
## FINANCE DEPARTMENT



### **Announcing the NEW Interactive Monthly Financial Report**

After months of development, the Finance Department is excited to introduce the new interactive Monthly Finance Report. Staff created a report that would be both interactive and easy to use while continuing to provide important insight into the City's finances. OpenGov, an existing service currently in use by the City, was used to create this interactive report. There is a limitation to what can be created using this platform, but staff will continue to update and improve this report as new enhancements become available.

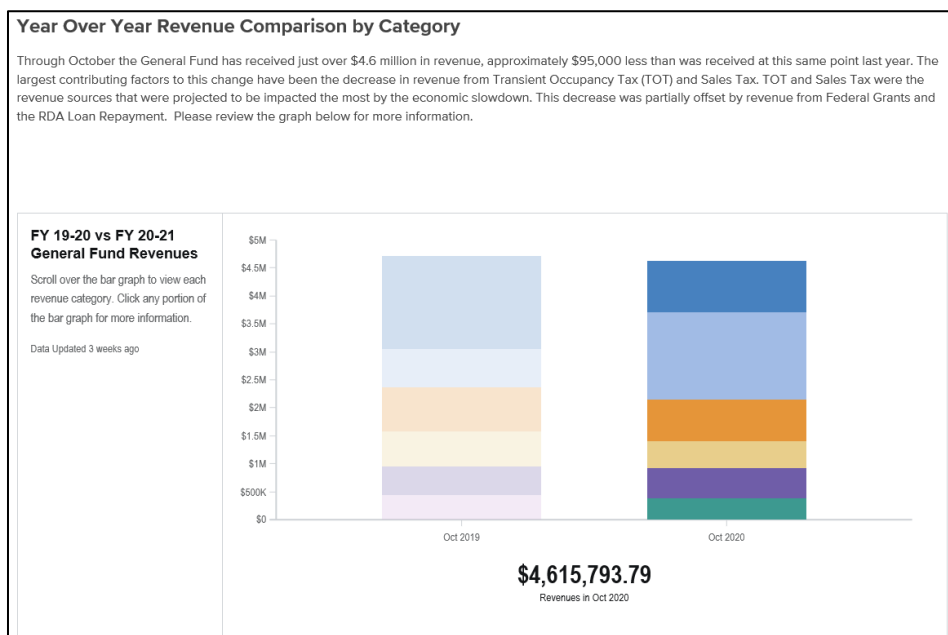
Our new report will provide an overview of the City's General Fund Budget to Actual at the end of each month and year-over-year comparison between revenues and expenditures.



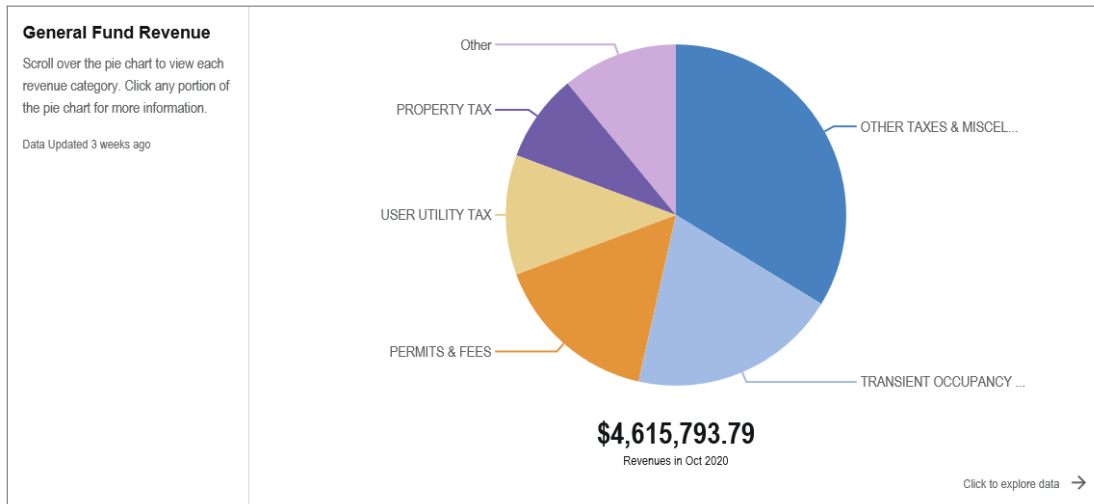
The report will be broken into three sections, Revenues, Expenditures, and links to the annual Financial Reports.

## Revenue

The revenue section provides details on the major revenue categories, the amounts received year-to-date, and the comparison to the same period last year. Additionally, readers can click on the graph to dive deeper into the numbers and view any other available reports on the City's OpenGov portal.



From bar graphs to pie charts to tables, the new monthly financial report provides readers with several ways to view the City's financial information.



General Fund Revenue	
Category	Oct 2020
OTHER TAXES & MISCELLANEOUS ...	\$1,556,771.05
TRANSIENT OCCUPANCY TAX	\$914,109.20
PERMITS & FEES	\$729,504.50
USER UTILITY TAX	\$524,274.81
PROPERTY TAX	\$384,327.89
Other	\$506,806.34

## Expenditures

Similar to revenues, the expenditure section breaks down expenditures by department and also allows readers to click on the graphs to view even more detail in the City's OpenGov portal. A monthly expenditure comparison is also available to compare spending in the current fiscal year by month to the previous year.

<b>FY 19-20 &amp; FY 20-21 Monthly Expenditure Comparison</b>  <small>Scroll over the table to view each revenue category. Click any portion of the table for more information.</small>  <small>Data Updated 3 weeks ago</small>	Month	FY2020	FY2021
	July	\$749,208.47	\$540,806.30
	August	\$2,737,034.30	\$1,580,449.15
	September	\$5,901,142.28	\$4,059,294.30
	October	\$7,192,699.94	\$6,944,980.92
	November	\$10,186,518.74	-
	December	\$15,150,498.09	-
	January	\$15,744,305.56	-
	February	\$17,102,821.87	-
	March	\$20,481,494.60	-
	April	\$21,512,102.60	-
	May	\$24,349,839.36	-
	June	\$28,538,840.43	-

Want to test out the new monthly financial report? Head over to <https://stories.opengov.com/rpv/published/u7ma6BSHw> to view October's report.



## Fiscal Health of California Cities Report FY 2018-2019

The California State Auditor's Fiscal Health Analysis Report is now available for FY 2018-2019. The report ranks fiscally challenged cities in California from highest to lowest risk (where #1 is the worst risk).

Out of the 471 cities included in the report, the City of Rancho Palos Verdes ranked number 390 for overall risk. The City scored 89.47 out of 100 points, as a result, designated as low risk. The points awarded encompasses the city's ability to pay its bills in both the short and long term. Compared to the report last year, the City improved its ranking from number 382.



The following is a more detailed discussion of the report.

#### Peninsula Cities Results

Compared to the neighboring Peninsula cities, the City of Rancho Palos Verdes ranked second with the lowest risk. The City of Rolling Hills scored slightly higher than the City of Rancho Palos Verdes mainly due to the difference in the size of operations (lower liabilities). At the end of FY 2018-2019, the fund balances of City of Rolling Hills in governmental funds is \$7.8 million, while the City of Rancho Palos Verdes, ended the year with \$67.2 million. The overall comparison of the neighboring cities are as follows:

<b>City Name</b>	<b>Overall Risk Designation</b>	<b>Overall Points</b>	<b>Overall Rank</b>
<b>Rolling Hills</b>	<b>Low</b>	<b>95.48</b>	<b>438</b>
<b>Rancho Palos Verdes</b>	<b>Low</b>	<b>89.47</b>	<b>390</b>
<b>Palos Verdes Estates</b>	<b>Low</b>	<b>84.90</b>	<b>349</b>
<b>Rolling Hills Estates</b>	<b>Low</b>	<b>72.66</b>	<b>229</b>

#### Report Overview

In October 2019, the California State Auditor launched a new program to identify local government agencies that are at high risk for the potential of waste, fraud, abuse, or mismanagement, or that have major challenges associated with their economy, efficiency, or effectiveness. The first element of the program is producing an interactive dashboard tool ranking of 471 California cities that could be facing fiscal challenges. The second element of the program is to conduct audits for the cities designated as high risk.

#### Methodology for Ranking California Cities

The California State Auditor analyzed and assessed the FY 2018-2019 audited financials of all cities included in the report. Afterwards, the cities ranked as either high, moderate, or low risk for fiscal distress. The financial indicators used for ranking are as follows:

FINANCIAL INDICATORS	POINTS POSSIBLE
1. General Fund Reserves	30
2. Debt Burden	15
3. Liquidity	10
4. Revenue Trends	5
5. Pension Obligations	10
6. Pension Funding	5
7. Pension Costs	5
8. Future Pension Costs	5
9. OPEB Obligations	10
10. OPEB Funding	5
<b>Maximum Score Possible</b>	<b>100</b>

### **City of Rancho Palos Verdes Results**

The City's overall risk ranking of 390 is based on various indicators. Of the ten (10) financial indicators, the City ranked low risk for eight (8) indicators including liquidity, debt burden, general fund reserves, pension obligations, and pension costs. For the remaining two (2) indicators, the City is designated as moderate risk for revenue trends and pension funding.

The revenue trends indicator measures the extent to which the City's general fund revenues are increasing or declining over time. The City's rank for this category is number 49, scoring 3 points out of 5 points. The average annual change in general fund revenue is 4%. Compared to the other Peninsula cities, the average revenue growth is 6%-7%.

The second indicator with a moderate risk score is the City's pension funding. Based on the report, the City ranked number 225 and received 3.7 points out of 5 possible points. At the end of FY 2018-2019, the City's funded ratio is 74%. The funded status is similar to the neighboring Peninsula cities of 73%-84%. As part of the City Council goals in FY2020-2021, staff is currently working on a pension guideline that may increase this score in the future. It is also important to note that the City received perfect scores for any Other Post-Employment Benefits (OPEB) costs for the reason that such benefits are not offered to employees.

Overall, at the end of FY 2018-2019, the City of Rancho Palos Verdes' ranking is another indicator that the City is in strong fiscal health. This is attributed to the City's long history of conservative fiscal policies and stable property tax revenues. Lastly, the ranking also confirms the City's low risk for the potential of waste, fraud, abuse, or mismanagement. The City will continue to seek ways to improve our future risk rating.

Source: California State Auditor [https://www.auditor.ca.gov/local\\_high\\_risk/dashboard-csa.html](https://www.auditor.ca.gov/local_high_risk/dashboard-csa.html)

## Small Business Financial Assistance Plan Update

On December 1, 2020, the City Council approved to extend the Small Business Financial Assistance Plan to provide relief and promote the general welfare of the City's small business community experiencing negative financial impacts stemming from the COVID-19 pandemic. The program was originally implemented on April 8 and revised on June 2 to issue tax refunds to small businesses located within the City with gross receipts of \$1.5 million or less. Since the implementation, the City issued 14 refunds totaling to \$4,939.

The approved extension waives the 2021 business license tax for eligible small businesses, as defined by Resolution No. 2020-34.

In addition to the Small Business Financial Assistance Plan, the City Council unanimously voted not to increase the 2021 business license tax for all 1,887 registered businesses. The business categories include in-city consultants, contractors, residential rentals, commercial or delivery vehicles, and refuse haulers.



Lastly, the City Council also approved to continue to assist over 430 home businesses by waiving their business license taxes in 2021.

During the week of December 14, 2020, the Finance Department will begin mailing out business license renewal notices. The renewal form and business license tax (if applicable) are due no later than January 31, 2021.

To view the full staff report presented to the City Council on December 1, 2020 visit [https://rpv.granicus.com/MetaViewer.php?view\\_id=5&clip\\_id=3775&meta\\_id=88551](https://rpv.granicus.com/MetaViewer.php?view_id=5&clip_id=3775&meta_id=88551).

Resolution No. 2020-34 can be found at <https://documents.rpvca.gov/WebLink/0/doc/82115/Page1.aspx>

## PUBLIC WORKS DEPARTMENT

### Initial Study Released Recommending the Preparation of an EIR for the Portuguese Bend Landslide Mitigation Project

In accordance with the California Environmental Quality Act (CEQA), the City will prepare an Environmental Impact Report (EIR) for the proposed Portuguese Bend Landslide Mitigation Project. The proposed project involves a series of recommended mitigation measures for the landslide, which began moving in 1956 and has resulted in significant infrastructure damage to homes, utilities, and roadways.

The City released the Initial Study that describes what issues to be addressed in the project EIR. The comment period for the Notice of Preparation ends at 4:30 p.m. on January 15, 2021.

To view the Notice of Preparation of an EIR for the Portuguese Bend Landslide Mitigation Project, visit: <http://www.rpvca.gov/DocumentCenter/View/16316/PBLS-NOP-w-Figure-110620>

To view the Initial Study for the Portuguese Bend Landslide Mitigation Project, visit: [https://www.rpvca.gov/DocumentCenter/View/16324/RPV-Portugese-Bend\\_IS\\_FINAL-111120](https://www.rpvca.gov/DocumentCenter/View/16324/RPV-Portugese-Bend_IS_FINAL-111120)

In addition to written comments, on **December 19 at 12:30 p.m.**, the City Council will hold a hybrid in-person/virtual meeting to provide information about the project and solicit public input regarding issues to be addressed in the EIR. The City encourages all interested individuals and organizations to attend the meeting.



The meeting will take place in McTaggart Hall at Fred Hesse Jr. Community Park with safety protocols to help prevent the spread of COVID-19, though virtual participation is highly encouraged.

For more information on the Portuguese Bend Landslide and the Portuguese Bend Landslide Mitigation Project, visit <http://www.rpvca.gov/1031/Portuguese-Bend-Landslide>

### Coastal Bluff Fence Replacement Project

Phase III of the project, which consists of replacing deteriorated metal fencing along the sidewalk and trail adjacent to Calle Entradero with new fencing is on track for completion in mid- to late December. A section of the trail remains closed during the work (see map), and we apologize for any inconvenience due to this temporary closure.



*Fence replacement In Process*



*Street view of temporary fence*



## Extra Pre-Rainy Season Street Sweeping

Staff is pleased to report that this year's extra street sweeping began in November and was completed last week. While the City regularly sweeps all the arterial streets, scenic turnouts, and parking lots twice a month, the City performs additional sweeping of those high traffic areas once a year. This extra sweeping is one of the City's best management practices (BMPs) for stormwater pollution prevention (NPDES) activities.



## Outreach for Mandatory Commercial Recycling

Staff has prepared and included a two-sided colored flier in the business license renewal packets, which will be mailed to approximately 1,887 RPV business license holders during the next two weeks. The flier educates commercial sector properties and multifamily complexes about major State requirements regarding mixed recycling (paper/cans/bottles) and organics waste (green waste and food waste). This outreach is a continuation of the City's efforts to comply with the various state mandates.

### Mandatory Recycling (AB 341) FOR BUSINESSES & MULTI-FAMILY DWELLINGS INCLUDING PUBLIC ENTITIES SUCH AS GOVERNMENT OFFICES & SCHOOLS



#### MIXED PAPER & CARDBOARD:

- Writing Paper
- Computer Paper
- Newspaper
- Flattened Cardboard
- Flattened Boxes
- File Folders
- Junk Mail
- Phone Books
- Magazines
- Shredded Paper
- Paper Packaging
- Paper Bags

#### RECYCLABLE CONTAINERS:

- Aluminum Cans
- Glass Bottles & Jars (all colors)
- Steel (tin) Cans
- All Plastic Bottles, Jugs & Containers marked with a recycling symbol or labeled "CA Redemption Value"
- Cartons



#### DON'T RECYCLE:

Disposable plates or cups, paper towels, tissue, carbon paper, plastic bags (NO plastic grocery bags, newspaper delivery bags or chip/snack bags), ceramics, drinking glasses, mirrors, Styrofoam packing peanuts, batteries, light bulbs, clothing or shoes.

#### RECYCLING ALTERNATIVES:

- Plastic grocery bags can be returned to grocery stores for recycling or they can be reused.
- Batteries and light bulbs need to be disposed of properly and not placed in trash or recycling containers. Visit our website for proper disposal of HHW items.

For information about commingled recycling program, call your hauler or visit their website.

For more information on AB 341, Mandatory Commercial Recycling, go to <https://www.calrecycle.ca.gov/Recycle/Commercial/>

or contact the City of Rancho Palos Verdes at 310 544 5252 or email: [publicworks@rpvca.gov](mailto:publicworks@rpvca.gov)



**RPV CARES**

### The State's Mandatory Commercial Organics Recycling Law (AB1826)

**All RPV businesses** that generate 2 or more cubic yards of solid waste (trash, recycling and green waste) per week **MUST** have an **organics** waste recycling program in place.

**All RPV multi-family complexes with 5 or more units** that generate 2 or more cubic yards of solid waste (trash, recycling and green waste) per week **MUST** have a **green waste** recycling program in place.

This law requires recycling of food scraps, landscape debris, and non-hazardous wood waste. For more information, visit:  
<https://www.calrecycle.ca.gov/Recycle/Commercial/Organics/>

For specific questions about your account, contact your trash and recycling hauler. For general questions contact  
Rancho Palos Verdes: (310) 544-5252  
Email: [publicworks@rpvca.gov](mailto:publicworks@rpvca.gov)



## **Abandoned Items in the Parkways or Sidewalks**

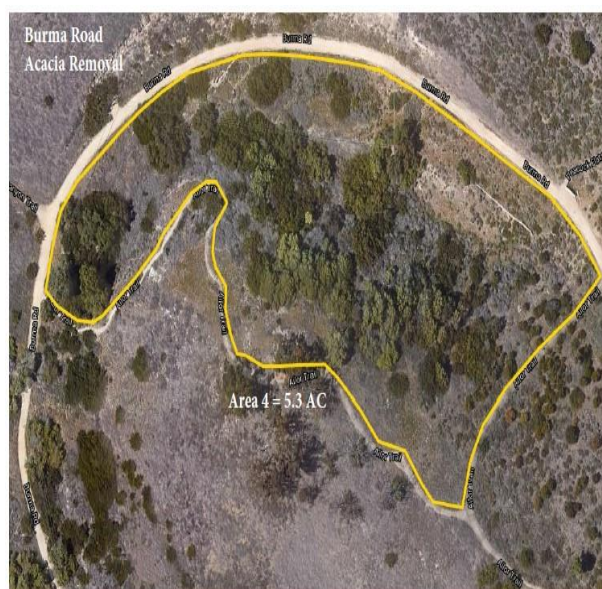
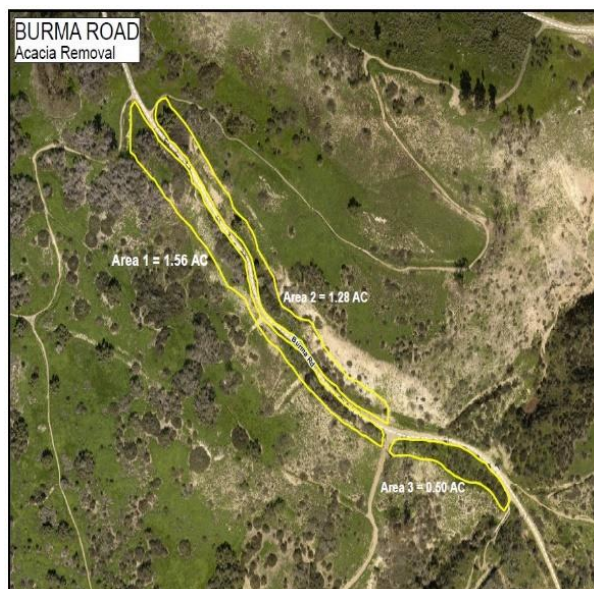
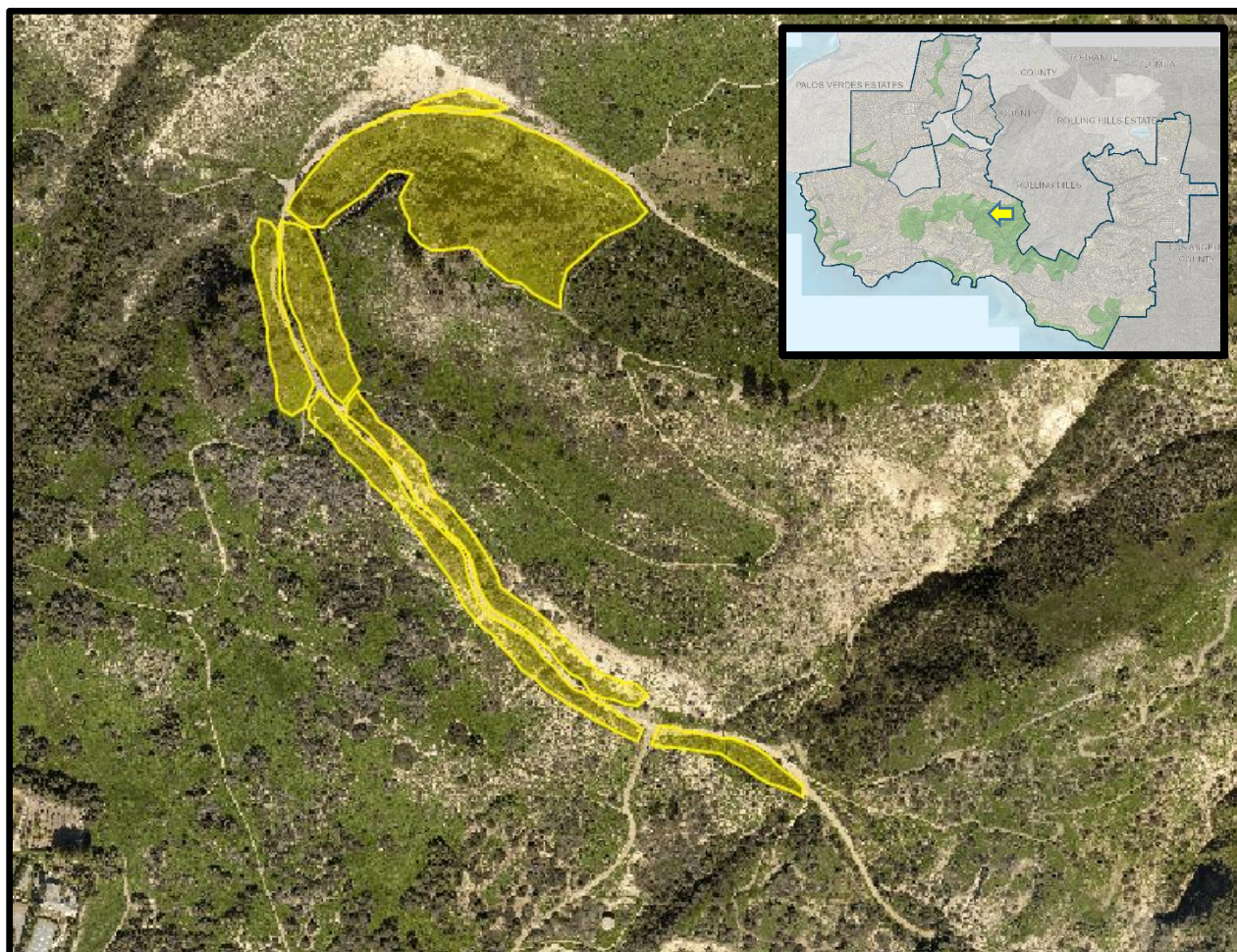
Please do not dispose of unwanted mattresses, desks, bed frames, TVs, and other large bulky items in the City parkways or sidewalks. The City's solid waste collection contractor, EDCO, offers customers a **FREE** (limited) collection of bulky and electronics waste items such as water heaters, appliances, furniture, televisions, etc. (please no Household Hazardous Waste). To arrange and schedule a special collection, please contact EDCO at 310-540-2977.

For items that can be donated, please contact a charitable organization first. This will help reduce items that end up in the landfill! Your items should be in good shape and/or re-usable. Thank you for doing your part in keeping the City and your neighborhood clean and beautiful!

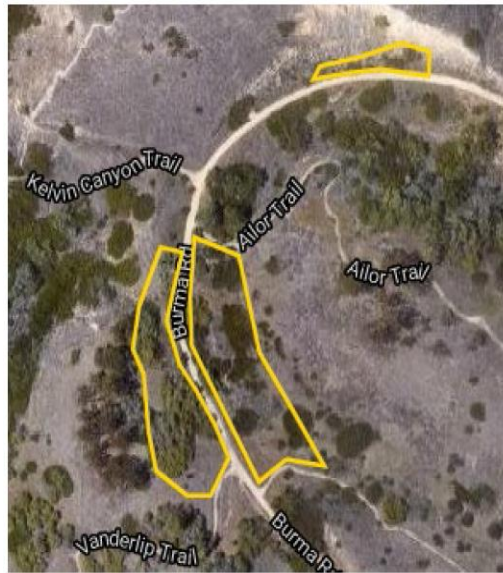
## **Acacia Removal Along Burma Road**

This week, contractors hired by Palos Verdes Peninsula Land Conservancy (PVPLC) started removing approximately 11.6 acres of acacia along the Burma Road Trail (between the Ailor Trail and Toyon Trail) in the Portuguese Bend Reserve. Acacia is a non-native shrub that can grow to such a size that it is mistaken as a tree, and removal of acacia in the Palos Verdes Nature Preserve helps reduce fuel load by removing a highly flammable. Starting this week, the Eagles Nest Trail and Ailor Trail will be closed until phase 1 of the project is complete, and then intermittent closures of Burma Road Trail will occur near the Kelvin Canyon and Vanderlip Trail junctions for phase two of the project. All trail closures are communicated to the public via listserve. This project is funded under the second grant issued by the City for acacia removal and is expected to be completed in three weeks. For more information on this project, please contact Open Space Management at [trails@rpvca.gov](mailto:trails@rpvca.gov) or 310-491-5775.









## Maintenance Activities

Public Works continues daily cleaning and sanitizing of parks' facilities and restrooms to reduce the spread of COVID.

In addition to regularly scheduled maintenance and repairs, Public Works performed the following:

### Graffiti Removal

- 10 removals





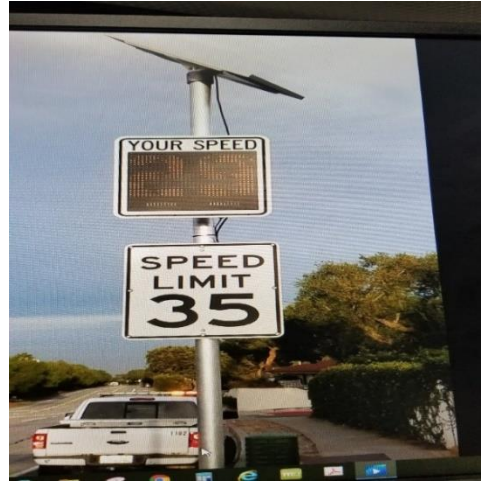
### Traffic Safety

- On Saturday, December 5, at approximately 1 pm, the traffic signal located at the intersection of Hawthorne Boulevard and Crest Road unexpectedly shutdown. The City's contractor was dispatched to the site and found that the power meter was not functioning. The contractor bypassed the non-operational meter, and the traffic light was online by 3 pm that day. Public Works is currently working with So Cal Edison to install a new meter by the end of this week. Residents should know that all City signals are inspected every month to minimize the possibility of malfunctions.



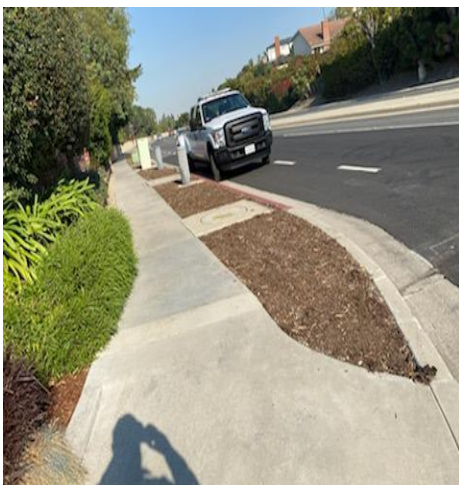
- Public Works acquired two new mobile radar speed display feedback units that are ready to be deployed. If you feel you need help reducing traffic speeds in the City, please contact Nasser Razepoor at [nrazepoor@rpvca.gov](mailto:nrazepoor@rpvca.gov) for a two-week deployment request in your neighborhood.
- Public Works has finished installing the permanent Speed Radar unit Located on

Palos Verdes Drive East between Crest Road and Calle Aventura. Public Works worked with the Lomita Sheriff's Department and RPV Traffic Safety Committee to install these units and curb speeding in this area.



#### Vegetation Trimming and De-Weeding

- Ganado Drive from Palos Verdes Drive East to Floweridge Drive.
- Palos Verdes Drive South from 25th City Limit to Schooner Drive.
- Palos Verdes Drive West from Hawthorne Boulevard to western City limit.
- De-weeding along Rue Langlois.
- Installation of mulch along Crest Rd center median (west side of City) and in the parkway along Hawthorne Boulevard from Verde Ridge Road to Eddinghill Drive.

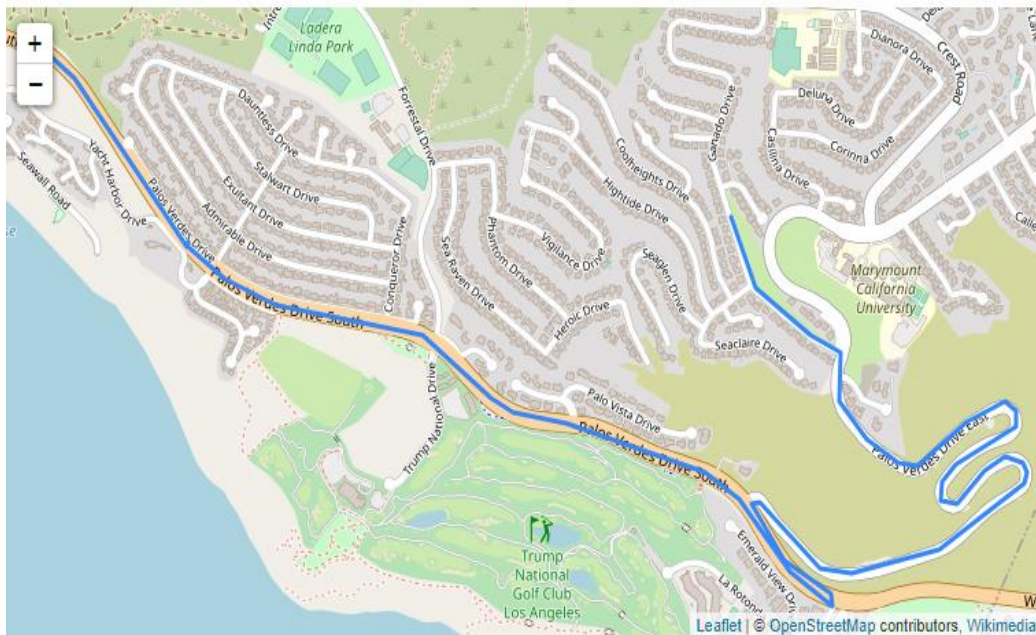






- Right-of-Way and center median crews completed vegetation trimming and de-weeding along Palos Verdes Drive South and the southern portion of Palos Verdes Drive East (see below map).

### ACTIVITY ON MAP



### Fallen Branch Removal

- Branch was removed from Sail View Ave Roadway.
- Branch removed on Crest Road and Palos Verdes Drive East Roadway.





Irrigation Repairs and Water Spill Response to:

- Lower Hesse
- Eastview Park
- PVIC Park
- Ladera Linda
- Vallon and Hawthorne
- Vigilance and Phantom Drive



Historical Society Building Relocated

- The Palos Verdes Historical Society trailer at City Hall was moved last week to a new location with more space on City Hall grounds. The move also helps free up parking to help accommodate City Hall Visitors.



### Mayor Eric Alegria Attends the City of Rolling Hills Estates 23<sup>rd</sup> Annual Parade of Lights

On Saturday, December 5, Mayor Eric Alegria represented the City of Rancho Palos Verdes in the City of Rolling Hills Estates holiday (reverse) parade of lights. Our Public Works department decorated and set up one of its vehicles to represent the City of Rancho Palos Verdes. The City vehicle was maned by Mayor Alegria and Family. The event had a great turn out, and the City was well represented.

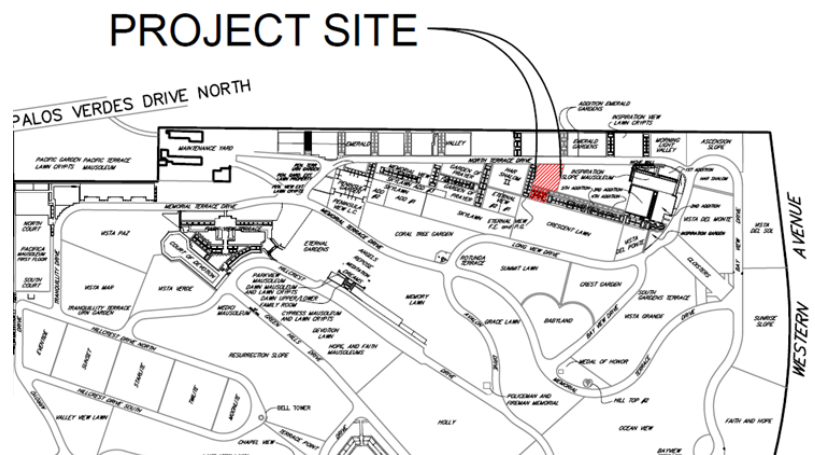




# COMMUNITY DEVELOPMENT DEPARTMENT

# Public Notice Issuance for Grading Permit at Green Hills Memorial Park (PLGR2020-0015)

On December 10, 2020, the Planning Division will issue a notice to the public of a proposed project at the Green Hills Memorial Park. The project includes a request to conduct 2,200 yd<sup>3</sup> of balanced grading (1,100 yd<sup>3</sup> of cut and 1,100 yd<sup>3</sup> of fill) to accommodate the installation of vaults in unimproved portions of the Alta



Vista Gardens area in Area 2 (Inspiration Slope) of the Master Plan. A copy of the notice is available to view [here](#). For questions, please contact Deputy Director, Octavio Silva at (310) 544-5234 or via email at [octavios@rpvca.gov](mailto:octavios@rpvca.gov). Additional information about the proposed project is available on the City's website at the following link: <https://www.rpvca.gov/376/Green-Hills-Memorial-Park-Master-Plan>

## Public Notice for Ladera Linda Community Center's Conditional Use Permit

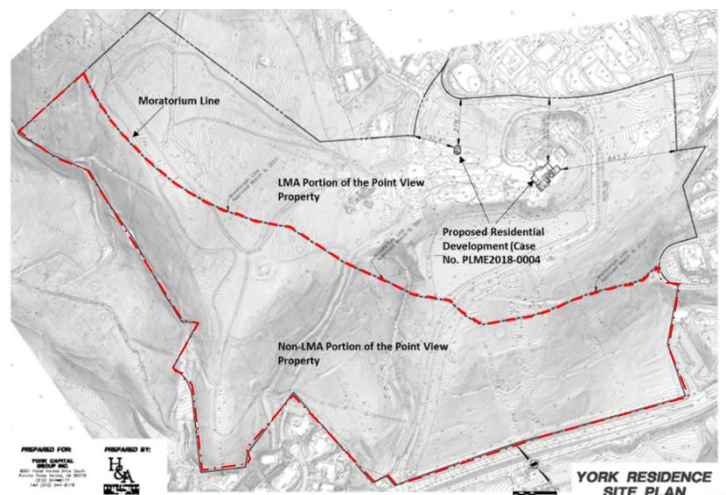
On December 10, 2020, the Community Development Department will issue a notice informing the public that the Planning Commission will conduct a public hearing on January 26, 2021, to consider a Conditional Use Permit (CUP) for the development of the new Ladera Linda Park and Community Center. A copy of the notice is available to view [here](#). The proposed project includes a request to demolish the existing building and to accommodate the construction of, but not



areas and landscaping. The Community Development Department will be accepting public comments through January 19, 2021. The Ladera Linda Master Plan, associated documents and City Council staff reports are also available for viewing on the City's website (<http://www.rpvca.gov/982/Ladera-Linda-Park-Master-Plan>). For questions, please contact Deputy Director, Octavio Silva at (310) 544-5234 or via email at [octavios@rpvca.gov](mailto:octavios@rpvca.gov).

## **Complete Application for Subdivision Proposal at 6001 Palos Verdes Drive South (Point View)**

On December 4, 2020, the Planning Division issued a Completeness Letter for the proposed subdivision of the Point View property (Attached). Plans and application materials for the proposed Vesting Tentative Tract Map were filed with the City in December 2018. The project proposes to subdivide the portion of the 94 acre site (as outlined in red in the aerial map) that is located outside of the



City's Landslide Moratorium Area into 50 lots including, but not limited to, 37 new lots for residential development along with 1 estate lot. With the issuance of the Complete Letter, staff has provided notification to the applicant that the information needed to begin processing the application has been received. It does not mean that a decision has been made on the application request. Staff will be issuing a Request for Proposals to acquire professional services to begin the environmental review process. A project homepage will be available soon on the City's website and additional updates will be provided as more information becomes available. For questions, please contact Deputy Director, Octavio Silva at (310) 544-5234 or via email at [octavios@rpvca.gov](mailto:octavios@rpvca.gov).



## Onsite Pre-Grading Meeting for Residential Construction at 6001 Palos Verdes Drive South (Point View)

On December 3, 2020, Community Development Department staff met with the project applicant and development team for an onsite pre-grading meeting at the Point View property. On October 30, 2020, the City's Building & Safety Division issued a permit for onsite grading activities to accommodate the construction of a new 7,375 ft<sup>2</sup> (garage included) two-story residence and a 611 ft<sup>2</sup> accessory dwelling unit along with ancillary site improvements. The residence will be located on the portion of the property located within the City's Landslide Moratorium Area. The project was previously approved by the City's Planning Commission on April 14, 2020. Grading operations started on December 5, 2020. For any project or construction activity questions or concerns, please contact Deputy Director, Octavio Silva at (310) 544-5234 or via email at [octavios@rpvca.gov](mailto:octavios@rpvca.gov).



## Raising Cane's Project Webpage is Now Available

The Planning Division created a webpage on the proposed Raising Cane's project at 29035 & 29051 S. Western Avenue. As a major development project that entails demolishing the existing Marie Callender's and Broiler Express to accommodate a new 2,798 ft<sup>2</sup> drive-thru restaurant, the City will provide periodic updates on upcoming meetings and post staff reports related to the project as it becomes available. Please click on the following link to view the webpage: <https://www.rpvca.gov/1341/Raising-Canes>.

You may also subscribe to future notifications regarding the project by signing up to join "Notify RPV" (<http://www.rpvca.gov/list.aspx>) and selecting Raising Cane's from the list.



## **Regional Housing Needs Assessment (RHNA) Update**

On December 7, 2020, the Southern California Association of Governments (SCAG) conducted a virtual orientation session for the RHNA appeals board. The orientation provided a recap of the RHNA process and outlined the RHNA Appeals Procedures and upcoming Appeal hearings. The first RHNA appeals hearing is scheduled on December 21, 2020, with additional hearings tentatively scheduled throughout January 2021. Additional updates will be provided as more information becomes available related to the City's RHNA Appeal hearing date.

## **City Manager Letter to FAA Concerning Jet Overflights**

On December 9, 2020, the City Manager sent a letter on behalf of RPV residents and the City Council to the Federal Aviation Administration (FAA) expressing concern at the recent escalation of passenger jets being directed by FAA air traffic controllers to overfly RPV. The City has a long history of expressing concern to the FAA regarding this noise impact on the City's quality of life. Attached is the City Manager's letter and two previous letters sent to the FAA through RPV staff representation on the LAX Community Noise Roundtable.

## **Holiday Building Inspection Schedule**

During the City Hall winter closure, the City's Building & Safety Division will provide building inspection services on Monday, December 28, 2020, and Wednesday, December 30, 2020. To schedule an inspection or obtain more information about inspection services and requests please visit the Building & Safety Division homepage at the following link: <https://www.rpvca.gov/289/Building-Safety> .

## **Planning Commission Follow-up Agenda**

See attached follow-up agenda from the Planning Commission meeting on Tuesday, December 8, 2020.

### **Attachments:**

6001 PVDS Completeness Letter dated December 4, 2020 – Page 87

City Manager Letter to FAA dated December 9, 2020 – Page 88

Roundtable Letter to FAA dated May 23, 2018 – Page 90

Roundtable Letter to FAA dated January 8, 2020 – Page 93

P.C. Follow-up Agenda for Tuesday, December 8, 2020 – Page 101

## RECREATION AND PARKS DEPARTMENT

### Holistic Preserve Parking Report

A comprehensive review and analysis of Preserve-wide parking and access will be presented to the City Council on December 15, 2020. The report will present various solutions to this long-standing challenging issue.

The December 15 meeting follows earlier meetings in August, September, and October that addressed issues both in the Del Cerro area and Preserve-wide.

[Click here to see the December 15 Staff Report](#)

[Click here to view the December 15 Agenda](#)

### New Safety Measures for Outdoor Recreation and Private Gatherings

The Los Angeles County Department of Public Health recently issued a *Targeted Temporary Safer at Home Order* with updated guidance on attending private group gatherings and participating in outdoor recreation activities. Public parks and outdoor spaces are ideal places to gather with your household and participate in recreation activities, as they can help reduce the spread of the virus from one person to another. When participating in a gathering or other activity, all park rules must be followed.

#### Parks and Trails Open

Parks and trails remain open for recreation use, including running, walking, and playing outdoors with members of the same household. All activities where individuals will be or can be in contact with non-household members require an appropriate face-covering unless medically exempt.

#### Playgrounds Open

Playgrounds are currently open.

#### Group Gatherings Prohibited

While gathering and participating in recreation activities with your household is

allowed, all public and private gatherings and events with people from more than one household are not permitted

The updated order is in effect from November 30, 2020, through December 20, 2020 and may be extended.

County of Los Angeles Temporary Targeted Safer at Home Health Officer Order:  
[http://publichealth.lacounty.gov/media/Coronavirus/docs/HOO/HOO\\_SaferatHome\\_SurgeResponse.pdf](http://publichealth.lacounty.gov/media/Coronavirus/docs/HOO/HOO_SaferatHome_SurgeResponse.pdf)

Rancho Palos Verdes Park Rules: <http://rpvca.gov/1333/Outdoor-Group-Picnic-Rules>

The YMCA After School program will be temporarily closed until this order is lifted.

## Elf in The Park

A festive green poster titled "Elf in the Park" by The City of Rancho Palos Verdes. It features a small elf icon in the top left and a row of gingerbread men and trees at the bottom. The poster contains clues for finding the elf "Rancho" in different parks throughout December.

THE CITY OF RANCHO PALOS VERDES PRESENTS

# Elf in the Park

Rancho the Elf has been having fun causing all kinds of mischief in our parks! Each week in December he will be visiting a different RPV park, use the clues below to find him! Once you find him, please take a selfie with Rancho and share it using #RanchoTheParkElf

**December 1-6th**  
Rancho loves animals, especially dogs! He loves to watch his dog East run and play with other dogs.

**December 7-13th**  
Rancho likes to pretend he is the Captain of the great tall sailing ship The Ryan when he plays at this park!

**December 14- 20th**  
Batter up! Rancho's favorite sport is baseball and his all time favorite player is Fred McGriff!

**December 21-27th**  
Did you know that December marks the start of the migration of the Pacific Gray Whale? Rancho's polished up his binoculars and is getting ready to look for Whales at his favorite Point and will enjoy seeing any nearby Light Houses.

**December 28-31st**  
Rancho grew up in a forrest and he loves to go hiking in his free time, so this park on Forrestal Dr. sounded like a whole lotta fun!

Participating Parks : Point Vicente Interpretive Center, Fred Hesse Jr. Park, Ryan Park, Ladera Linda, and Eastview Park

For more information [parks@rpvca.gov](mailto:parks@rpvca.gov) or 310-544-5260

If you are a person with a disability and need an accommodation to participate in programs, services, activities and meetings, contact the City's ADA Coordinator/Risk Manager at 310-683-3157, [adarequests@rpvca.gov](mailto:adarequests@rpvca.gov), 30940 Hawthorne Blvd., Rancho Palos Verdes, CA 90275, at least 48 hours in advance to request an auxiliary aid or accommodation.

Rancho the Elf has been having fun causing all kinds of mischief in the City's parks! Each week in December, he will be visiting a different RPV park. Use the clues below to find him:

**December 1-6**

Rancho loves animals, especially dogs! He loves to watch his dog **East** run and play with other dogs.

**December 7-13**

Rancho likes to pretend he is the Captain of the great tall sailing ship The **Ryan** when he plays at this park!

**December 14- 20**

Batter up! Rancho's favorite sport is baseball and his all-time favorite player is **Fred McGriff**!

**December 21-27**

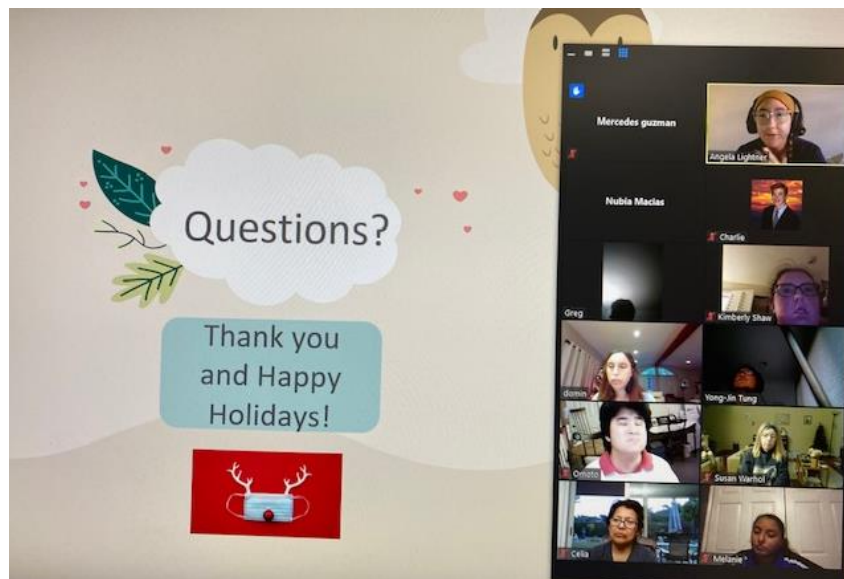
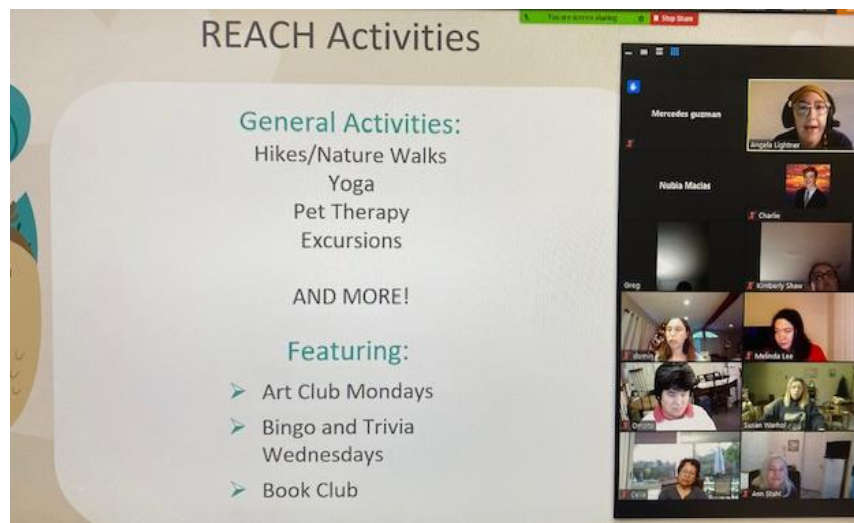
Did you know that December marks the start of the migration of the Pacific gray whale? Rancho's polished up his binoculars and is getting ready to look for whales at his favorite **Point** and will enjoy seeing any nearby lighthouses.

**December 28-31**

Rancho grew up in a forest and he loves to go hiking in his free time, so this park on **Forrestal** Drive sounded like a whole lotta fun!

Once you find him, please take a selfie with Rancho and share it using **#RanchoTheParkElf**. Participating Parks: Point Vicente Interpretive Center, Fred Hesse Jr. Community Park, Robert Ryan Park, Ladera Linda Park, and Eastview Park. For more information, please contact the Recreation and Parks Department at [parks@rpvca.gov](mailto:parks@rpvca.gov) or 310-544-5260.

## The REACH Program Is Back!



On Monday, December 7, approximately 20 REACH participants and REACH staff joined our first virtual REACH program meet and greet event. It was a fun-filled afternoon of sharing and getting to know each other! Participants learned about new and exciting programs coming in 2021, and got the opportunity to ask staff questions and provide comments. The REACH program will be starting up again in January 2021 in a virtual capacity and eventually in-person, when it is safe to do so.

REACH is a Recreational Therapy program designed to meet the social and recreational needs of individuals with developmental disabilities.

## Something to Yelp About!

The Point Vicente Interpretive Center was Awarded the 2020 “People Love Us on Yelp”, which is only awarded to the most highly rated and best reviewed places on yelp. PVIC has a 4.63 star rating; it’s clear the Yelp community loves PVIC.



## Filming Update

On December 3, a small outdoor still photography session for a catalog was held at a private residence between 7 a.m. and 6 p.m. On December 9 through 11, a production company is filming at Portuguese Bend Beach Club and using the parking lot at Marymount University for vehicle parking. The hours of filming on December 10 will be 7 a.m. until 10 p.m. with the other days scheduled for 7 a.m. to 7 p.m.

## Preserve and Beach Weekend Activity: Saturday, December 5 & Sunday, December 6:

Public Contacts: 917

Notice to Appear Citations Issued: 1

Parking citations: 30

Violations Observed: usually corrected and/or warning given: 25



### Ocean Trails Reserve:

Rangers continued to receive reports of increased dog use at Rancho Palos Verdes Beach. Animals are not allowed on any beach in the City of Rancho Palos Verdes. Dogs are allowed on the trails, if they are on a leash no longer than 6 feet in length. The City is working with Trump National Staff to ensure adequate signage is in place to educate and enforce the City's Municipal Code.



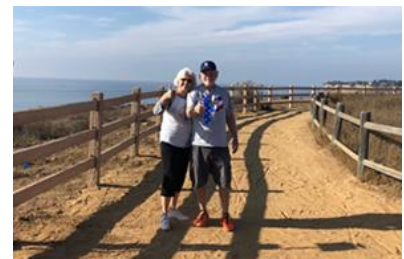
### Portuguese Bend Reserve:

Vanderlip Trail repairs are in progress. Work began on Wednesday, November 4<sup>th</sup>. Crews began to fill in and repair the ruts caused by a water main break in October. Vanderlip Trail remains closed, and a portion of Gary's Gulch Trail and Kubota Trail is also closed while crews station heavy machinery and transport aggregate and other materials to Vanderlip trail. Trail closure signage are in place in these areas.



### Vicente Bluffs Reserve:

Phase 3 Vicente Bluffs Fence Project is underway. Construction crews are still on-site, and all "trail closed" signage will remain in place in affected areas where work is still being completed. Patrons are advised to use caution.



## **Parks and Preserve Weekend Report**

Beaches, parks, and trails, including the Palos Verdes Nature Preserve, have been open since May 13 with physical distancing, in accordance with guidance from the County of Los Angeles. Please go to [www.rpvca.gov](http://www.rpvca.gov) for further information.

Below is a public usage summary report over the past weekend.

### **PALOS VERDES NATURE PRESERVE and ABALONE COVE**

Public Contacts: 917

### **HESSE PARK - walking paths, playground, and grass area**

Total park attendance: 848

Total interactions with the public: 42

**RYAN PARK - walking paths, playground, basketball court, and grass area**

Total park attendance: 234

Total interactions with the public: 22

**LADERA LINDA PARK - walking paths, playground, basketball and paddle tennis courts, and grass area**

Total park attendance: 206

Total interactions with the public: 15

**EASTVIEW PARK - walking paths, playground, dog park and grass area**

Total park attendance: 409

Total interactions with the public: 36

**LOWER POINT VICENTE PARK - walking paths and grass area**

Total park attendance: 3,241

Total interactions with the public: 127

**Total Weekend Attendance: 5,855**

**Total Interactions with Public: 242**



# December 2020

Sunday	Monday	Tuesday	Wednesday	Thursday	Friday	Saturday
		1 7:00 pm – City Council Meeting (Hybrid In-Person/Virtual Meeting) @ Hesse Park	2	3 7:00 pm – FAC Meeting (Virtual Meeting)	4	5
6	7	8 7:00 pm – Planning Commission Meeting (Virtual Meeting)	9 6:00pm – Civic Center Advisory Committee Special Meeting (Virtual Meeting)	10	11	12
13	14 6:00 pm – IMAC Special Meeting (Virtual Meeting)	15 7:00 pm – City Council Meeting (Hybrid In-Person/Virtual Meeting) @ Hesse Park	16 11:45 am – Mayor’s Lunch @ The Depot (Mayor Alegria) 1:30 pm – Sanitation District Meeting (Mayor Alegria)	17 7:00 pm – Emergency Preparedness Committee (Virtual Meeting)	18	19 <b>TENTATIVE</b> 11:30 am – City Council Special Closed Session 12:30 pm – City Council Special Meeting (Hybrid In-Person/Virtual Meeting) @ Hesse Park
20	21 <del>6:00 pm – IMAC Meeting (Virtual Meeting)</del> <b>Canceled</b>	22 <del>7:00 pm – Planning Commission Meeting (Virtual Meeting)</del> <b>Canceled</b>	23	24 <del>6:00pm – Civic Center Advisory Committee (Virtual Meeting)</del> <b>Canceled</b>	25	26
				<div>Happy Holidays</div> <div>Happy Holidays</div> <div>Winter Holiday Break – City Hall Closed</div>		
27	28	29	30	31		
	<div>Happy Holidays</div> <div>Happy Holidays</div> <div>Happy Holidays</div> <div>Happy Holidays</div> <div>Winter Holiday Break – City Hall Closed</div>					



# January 2021

Sunday	Monday	Tuesday	Wednesday	Thursday	Friday	Saturday
					1  City Hall Closed	2
3	4	5 7:00 pm – City Council Meeting @ Hesse Park Canceled	6	7	8	9
10	11 6:00 pm – IMAC Special Meeting (Virtual Meeting)	12 7:00 pm – Planning Commission Meeting (Virtual Meeting)	13 7:30 pm – ACLAD Board Meeting (Virtual Meeting)	14	15	16
17	18 <del>6:00 pm – IMAC Meeting @ City Hall Community Room</del> Canceled	19 7:00 pm – City Council Meeting (Hybrid In-Person/Virtual Meeting) @ Hesse Park	20 11:45 am – Mayor's Lunch @ The Depot (Mayor Alegria) 1:30 pm – Sanitation District Meeting (Mayor Alegria)	21 7:00 pm – FAC Meeting @ TBD 7:00 pm – Emergency Preparedness Committee (Virtual Meeting)	22 8:00 am – Mayor's Breakfast @ Trump National Golf Club/Golfer's Lounge (Mayor Alegria/CC member)	23
24	25 5:00 pm-Klondike Canyon Meeting @ Ladera Linda Community Center 6:30 pm – TSC Meeting (Virtual Meeting)	26 7:00 pm – Planning Commission Meeting (Virtual Meeting)	27	28 6:00pm – Civic Center Advisory Committee (Virtual Meeting)	29	30
31						



# February 2021

Sunday	Monday	Tuesday	Wednesday	Thursday	Friday	Saturday
	1	2 7:00 pm – City Council Meeting @ Hesse Park	3	4	5	6
7	8 6:00 pm – IMAC Special Meeting @ City Hall Community Room	9 7:00 pm – Planning Commission Meeting @ Hesse Park	10 7:30 pm – ACLAD Board Meeting @ City Hall Community Room	11	12	13
14	15 <del>6:00 pm – IMAC Meeting @ City Hall Community Room</del> <b>Canceled</b>  <b>Presidents' Day – City Hall Closed to Public</b>	16 7:00 pm – City Council Meeting @ Hesse Park	17 <b>11:45 am – Mayor's Lunch @ The Depot (Mayor Alegria)</b>  1:30 pm – Sanitation District Meeting (Mayor Alegria)	18 7:00 pm – FAC Meeting @ TBD  7:00 pm – Emergency Preparedness Committee @ City Hall Community Room	19	20
21	22 5:00 pm-Klondike Canyon Meeting @ Ladera Linda Community Center	23 7:00 pm – Planning Commission Meeting @ Hesse Park	24	25 6:00pm – Civic Center Advisory Committee @ City Hall Community Room	26 8:00 am—Mayor's Breakfast @ Trump National Golf Club/Golfer's Lounge (Mayor Alegria/ <b>CC member</b> )	27
28						

# TENTATIVE AGENDAS

*Agenda items listed below will be presented to the City Council for their consideration*

DEPARTMENT	AGENDA SECTION	AGENDA TITLE	ESTIMATED TIME
<b>SATURDAY 12/19/2020 11:30-2:30PM</b>			
	CLOSED SESSION	NO ITEMS SCHEDULED AT THIS TIME	
PUBLIC WORKS	REGULAR BUSINESS	Portuguese Bend Landslide Remediation Project-Initial Scoping Meeting	2:00
<b>January 19, 2021</b>			
<b>CLOSED SESSION/STUDY SESSION - 6:00 PM</b>			
	CLOSED SESSION	NO ITEMS SCHEDULED AT THIS TIME	
	SPECIAL MEETING	Interviews FAC and IMAC	
<b>REGULAR MEETING - 7:00 PM</b>			<b>4:15</b>
ADMIN	CONSENT CALENDAR	Minutes	
ADMIN	CONSENT CALENDAR	Treasury Report	
ADMIN	CONSENT CALENDAR	Lease agreement extension for wireless towers on City property (Verizon)	
CDD	CONSENT CALENDAR	Consideration of PSA for Consultant work on the Housing Element Update	
REC & PARKS	CONSENT CALENDAR	Consideration of PSA for parking application consultant	
REC & PARKS	CONSENT CALENDAR	Consideration of PSA with McGee Survey Consulting	
PUBLIC WORKS	CONSENT CALENDAR	Authorize filing of NOC for Residential Rehab Areas 3 & 4	
FINANCE	CONSENT CALENDAR	Warrant Register	
			1:00
PUBLIC WORKS	PUBLIC HEARING	Consider CDBG-CV Programs	0:15
CDD	PUBLIC HEARING	Introduction of Ord to amend RPVMC §17.10.020 - Accessory dwelling units	0:15
REC & PARKS	REGULAR BUSINESS	Consider parking fees and citation fines	0:15
CDD	REGULAR BUSINESS	Initiate Possible Code Amendment on update the City's sign ordinance (17.76.050)	0:15
CDD	REGULAR BUSINESS	Initiate Possible Code Amendment on Large Scale Treehouse Regulations	0:15
FINANCE	REGULAR BUSINESS	Fees Cost Study Report and Recommendations	0:45
FINANCE	REGULAR BUSINESS	CalPERS Actuarial Valuation Report and Pension Guidelines	0:45
<b>February 2, 2021</b>			
<b>CLOSED SESSION/STUDY SESSION - 6:00 PM</b>			
	CLOSED SESSION		
		Interviews FAC and IMAC	
<b>REGULAR MEETING - 7:00 PM</b>			<b>4:05</b>
ADMIN	CONSENT CALENDAR	Minutes	
ADMIN	CONSENT CALENDAR	Treasury Report	



# TENTATIVE AGENDAS

*Agenda items listed below will be presented to the City Council for their consideration*

DEPARTMENT	AGENDA SECTION	AGENDA TITLE	ESTIMATED TIME
FINANCE	CONSENT CALENDAR	Warrant Register	1:00
FINANCE	CONSENT CALENDAR	Budget Calendar	
FINANCE	CONSENT CALENDAR	Second Reading/Adoption of Ord to Amend RPVMC 17.10.020 ADUs	
FINANCE	CONSENT CALENDAR	Adoption of Pension Guidelines	
	PUBLIC HEARING	NO ITEMS SCHEDULED AT THIS TIME	
ADMIN	REGULAR BUSINESS	Consider appointments to IMAC and FAC	0:20
ALL DEPTS	REGULAR BUSINESS	Bi-annual report Committees	1:15
PUBLIC WORKS	REGULAR BUSINESS	Consideration and possible action to adopt a resolution re Safe Routes to School grant	0:15
PUBLIC WORKS	REGULAR BUSINESS	Subcommittee Status Report on RFPs	0:15
PUBLIC WORKS	REGULAR BUSINESS	Reassess Encroachment Permit Issuance Protocols	0:30
<b>February 16, 2021</b>			
<b>CLOSED SESSION/STUDY SESSION - 6:00 PM</b>			
	CLOSED SESSION	NO ITEMS SCHEDULED AT THIS TIME	
<b>REGULAR MEETING - 7:00 PM</b>			<b>3:45</b>
ADMIN	CONSENT CALENDAR	Minutes	1:00
FINANCE	CONSENT CALENDAR	Warrant Register	
FINANCE	PUBLIC HEARING	Consider Adopting Fees Cost Study Resolution	0:15
CDD	PUBLIC HEARING	Green Hills Annual CUP Review	0:30
PUBLIC WORKS	REGULAR BUSINESS	Reassess the PVDS Roadway Realignment East End Construction Project (CIP Project 8301)	0:30
FINANCE	REGULAR BUSINESS	Reassess City Council TOT and Reserve Policies	0:30
FINANCE	REGULAR BUSINESS	FY19/20 CAFR	0:15
REC & PARKS	REGULAR BUSINESS	Airshow Flyover Partnership with Green Hills (May 2021)	0:15
<b>March 2, 2021</b>			
<b>CLOSED SESSION/STUDY SESSION - 6:00 PM</b>			
	CLOSED SESSION	NO ITEMS SCHEDULED AT THIS TIME	

# TENTATIVE AGENDAS

*Agenda items listed below will be presented to the City Council for their consideration*

DEPARTMENT	AGENDA SECTION	AGENDA TITLE	ESTIMATED TIME
<b>REGULAR MEETING - 7:00 PM</b>			<b>3:15</b>
ADMIN	CONSENT CALENDAR	Minutes	
ADMIN	CONSENT CALENDAR	Treasury Report	
FINANCE	CONSENT CALENDAR	Warrant Register	
PUBLIC WORKS	CONSENT CALENDAR	Consideration of PSA for consulting work on Citywide Speed Mitigation Plan (Traffic Calming)	
	CONSENT CALENDAR		1:00
CDD	PUBLIC HEARING	Consider Adopting Urg Ord to comply with Coastal Sage Scrub	0:15
ADMIN	REGULAR BUSINESS	Report on Historical Dumping of DDT off the Peninsula coast	0:15
PUBLIC WORKS	REGULAR BUSINESS	City Entry Master Sign Plan	0:10
REC & PARKS	REGULAR BUSINESS	Solar panel options at Ladera Linda	0:20
REC & PARKS	REGULAR BUSINESS	Forrestal security options	0:45
<b>March 16, 2021</b>			
<b>CLOSED SESSION/STUDY SESSION - 6:00 PM</b>			
	CLOSED SESSION	NO ITEMS SCHEDULED AT THIS TIME	
<b>REGULAR MEETING - 7:00 PM</b>			<b>4:00</b>
ADMIN	CONSENT CALENDAR	Minutes	
ADMIN	CONSENT CALENDAR		
FINANCE	CONSENT CALENDAR	Warrant Register	
FINANCE	CONSENT CALENDAR		
			1:00
	PUBLIC HEARING		
FINANCE	REGULAR BUSINESS	Consider Financing Options for Ladera Linda	1:00
REC & PARKS	REGULAR BUSINESS	PV Nature Preserve Parking and Access Report	1:30
<b>April 6, 2021</b>			
<b>CLOSED SESSION/STUDY SESSION - 6:00 PM</b>			
	CLOSED SESSION	NO ITEMS SCHEDULED AT THIS TIME	
<b>REGULAR MEETING - 7:00 PM</b>			<b>2:00</b>
ADMIN	CONSENT CALENDAR	Minutes	

# TENTATIVE AGENDAS

*Agenda items listed below will be presented to the City Council for their consideration*

DEPARTMENT	AGENDA SECTION	AGENDA TITLE	ESTIMATED TIME
ADMIN	CONSENT CALENDAR		1:00
FINANCE	CONSENT CALENDAR	Warrant Register	
FINANCE	CONSENT CALENDAR		
PUBLIC WORKS	PUBLIC HEARING	ABCove Sewer Financing Options	1:00
	PUBLIC HEARING		
	REGULAR BUSINESS		
<b>April 20, 2021</b>			
<b>CLOSED SESSION/STUDY SESSION - 6:00 PM</b>			
	CLOSED SESSION	NO ITEMS SCHEDULED AT THIS TIME	
<b>REGULAR MEETING - 7:00 PM</b>			<b>1:00</b>
ADMIN	CONSENT CALENDAR	Minutes	1:00
ADMIN	CONSENT CALENDAR		
FINANCE	CONSENT CALENDAR	Warrant Register	
FINANCE	CONSENT CALENDAR		
	PUBLIC HEARING		
	REGULAR BUSINESS		
<b>FUTURE AGENDA ITEMS - Identified at Council meetings and pending receipt of memo from Councilmember</b>			
<u>Request Date:</u>	<u>Requested By:</u>	<u>Item:</u>	
8/6/2019	Dyda	Policy on recording/memorializing Council's requests/direction for future agenda items.	
<b>FUTURE AGENDA ITEMS TO BE AGENDIZED</b>			<b>0:15</b>
<u>Request Date:</u>	<u>Requested By:</u>	<u>Item:</u>	<u>Scheduled Date:</u>
7/16/2019	Dyda	Abalone Cove Sewer Financing Options	4/6/2021
10/15/2019	Cruikshank	West Basin Water District report	TBD
6/2/2020	Alegria	Reassess City Council TOT and Reserve Policies	2/16/2021
6/16/2020	Dyda	PVDS Roadway Realignment East End (CIP Project 8301)	2/16/2021
6/16/2020	Cruikshank	Airshow Flyover Partnership with Green Hills (May 2021)	2/16/2021
7/21/2020	Alegria	Reassess Encroachment Permit Issuance Protocols	2/2/2021
7/21/2020	Ferraro	Initiate Possible Code Amendment on Large Scale Treehouse Regulations	1/19/2021

## TENTATIVE AGENDAS

*Agenda items listed below will be presented to the City Council for their consideration*

DEPARTMENT	AGENDA SECTION	AGENDA TITLE	ESTIMATED TIME
8/18/2020	Alegria	Rancho LPG Independent Review (Border Issues)	12/15/2020
10/6/2020	Dyda	Subcommittee Status Report on RFPs	2/2/2021
11/17/2020	Alegria	Report on Historical Dumping of DDT off the Peninsula coast	3/2/2021
CITY MANAGER REPORT			0:15

## RPVtv Cox 33 / FIOS 38 Programming Schedule Guide Schedule - 12/13/2020 to 12/19/2020

	Sunday	Monday	Tuesday	Wednesday	Thursday	Friday	Saturday
	December 13, 2020	December 14, 2020	December 15, 2020	December 16, 2020	December 17, 2020	December 18, 2020	December 19, 2020
6:00 AM - 6:30 AM	Fitness Programming	Fitness Programming	Fitness Programming	Fitness Programming	Fitness Programming	Fitness Programming	Fitness Programming
6:30 AM - 7:00 AM	Fitness Programming	Fitness Programming	Fitness Programming	Fitness Programming	Fitness Programming	Fitness Programming	Fitness Programming
7:00 AM - 7:30 AM	City Talk 2020	City Talk 2020	City Talk 2020	City Talk 2020	City Talk 2020	City Talk 2020	City Talk 2020
7:30 AM - 8:00 AM	Around the Peninsula	Around the Peninsula	Around the Peninsula	Around the Peninsula	Around the Peninsula	Around the Peninsula	Around the Peninsula
8:00 AM - 8:30 AM	Peninsula Seniors Connections	Peninsula Seniors Connections	Peninsula Seniors Connections	Peninsula Seniors Connections	Peninsula Seniors Connections	Peninsula Seniors Connections	Peninsula Seniors Connections
8:30 AM - 9:00 AM							
9:00 AM - 9:30 AM	Fitness Programming	Fitness Programming	Fitness Programming	Fitness Programming	Fitness Programming	Fitness Programming	Fitness Programming
9:30 AM - 10:00 AM	Fitness Programming	Fitness Programming	Fitness Programming	Fitness Programming	Fitness Programming	Fitness Programming	Fitness Programming
10:00 AM -10:30AM	Lectures with Lianne	Lectures with Lianne	Lectures with Lianne	Lectures with Lianne	Lectures with Lianne	Lectures with Lianne	Lectures with Lianne
10:30 AM - 11 AM							
11:00 AM -11:30 AM	City Talk 2020	City Talk 2020	City Talk 2020	City Talk 2020	City Talk 2020	City Talk 2020	City Talk 2020
11:30 AM -12:00PM	Around the Peninsula	Around the Peninsula	Around the Peninsula	Around the Peninsula	Around the Peninsula	Around the Peninsula	Around the Peninsula
12:00 PM -12:30PM	Last Zero Fighter Dan King	Last Zero Fighter Dan King	Last Zero Fighter Dan King	Forgotten Korean War Fighter Ace	Forgotten Korean War Fighter Ace	Forgotten Korean War Fighter Ace	Forgotten Korean War Fighter Ace
12:30 PM - 1:00PM				USN Capt. Royce Williams	USN Capt. Royce Williams	USN Capt. Royce Williams	USN Capt. Royce Williams
1:00 PM - 1:30PM	Peninsula Seniors Connections	Peninsula Seniors Connections	Peninsula Seniors Connections	Peninsula Seniors Connections	Peninsula Seniors Connections	Peninsula Seniors Connections	Peninsula Seniors Connections
1:30 PM - 2:00PM							
2:00 PM - 2:30PM	Fitness Programming	Fitness Programming	Fitness Programming	Fitness Programming	Fitness Programming	Fitness Programming	Fitness Programming
2:30 PM - 3:00PM	Fitness Programming	Fitness Programming	Fitness Programming	Fitness Programming	Fitness Programming	Fitness Programming	Fitness Programming
3:00 PM - 3:30PM	City Talk 2020	City Talk 2020	City Talk 2020	City Talk 2020	City Talk 2020	City Talk 2020	City Talk 2020
3:30 PM - 4:00 PM	Around the Peninsula	Around the Peninsula	Around the Peninsula	Around the Peninsula	Around the Peninsula	Around the Peninsula	Around the Peninsula
4:00 PM - 4:30PM	City Talk 2020	City Talk 2020	City Talk 2020	City Talk 2020	City Talk 2020	City Talk 2020	City Talk 2020
4:30 PM - 5:00PM	Around the Peninsula	Around the Peninsula	Around the Peninsula	Around the Peninsula	Around the Peninsula	Around the Peninsula	Around the Peninsula
5:00 PM - 5:30PM	Playing the Field- Local Edition	Playing the Field- Local Edition	Playing the Field- Local Edition	Playing the Field- Local Edition	Playing the Field- Local Edition	Playing the Field- Local Edition	Playing the Field- Local Edition
5:30 PM - 6:00PM	Fitness Programming	Fitness Programming	Fitness Programming	Fitness Programming	Fitness Programming	Fitness Programming	Fitness Programming
6:00 PM - 6:30PM	City Talk 2020	City Talk 2020	City Talk 2020	City Talk 2020	City Talk 2020	City Talk 2020	City Talk 2020
6:30 PM - 7:00PM	City Talk 2020	City Talk 2020	City Talk 2020	City Talk 2020	City Talk 2020	City Talk 2020	City Talk 2020
7:00 PM - 7:30PM	Forgotten Korean War Fighter Ace	Forgotten Korean War Fighter Ace	The City of Rancho Palos Verdes LIVE City Council Meeting, December 15, 2020	History of the Neighborhood Church	History of the Neighborhood Church	History of the Neighborhood Church	History of the Neighborhood Church
7:30 PM - 8:00PM	USN Capt. Royce Williams	USN Capt. Royce Williams		Dana Graham	Dana Graham	Dana Graham	Dana Graham
8:00 PM - 8:30PM	Around the Peninsula	Around the Peninsula		Around the Peninsula	Around the Peninsula	Around the Peninsula	Around the Peninsula
8:30 PM - 9:00PM	Playing the Field- Local Edition	Playing the Field- Local Edition		Playing the Field- Local Edition	Playing the Field- Local Edition	Playing the Field- Local Edition	Playing the Field- Local Edition
9:00 PM - 9:30PM	City Talk 2020	City Talk 2020		City Talk 2020	City Talk 2020	City Talk 2020	City Talk 2020
9:30 PM - 10:00PM	City Talk 2020	City Talk 2020		City Talk 2020	City Talk 2020	City Talk 2020	City Talk 2020
10:00 PM -10:30PM	Lectures with Lianne	Lectures with Lianne		Lectures with Lianne	Lectures with Lianne	Lectures with Lianne	Lectures with Lianne
10:30 PM -11:00PM							
11:00 PM -11:30PM	Peninsula Seniors Connections	Peninsula Seniors Connections		Peninsula Seniors Connections	Peninsula Seniors Connections	Peninsula Seniors Connections	Peninsula Seniors Connections
11:30 PM -12:00 AM							
12:00 AM - 1:00 AM	Community Announcements	Community Announcements	Community Announcements	Community Announcements	Community Announcements	Community Announcements	Community Announcements
1:00 AM - 6:00 AM	Community Announcements	Community Announcements	Community Announcements	Community Announcements	Community Announcements	Community Announcements	Community Announcements



	Sunday	Monday	Tuesday	Wednesday	Thursday	Friday	Saturday
	December 13, 2020	December 14, 2020	December 15, 2020	December 16, 2020	December 17, 2020	December 18, 2020	December 19, 2020
6:00 AM - 6:30 AM							
6:30 AM - 7:00 AM							
7:00 AM - 7:30 AM	The City of Rancho Palos Verdes City Council Meeting, December 1, 2020	The City of Rancho Palos Verdes City Council Meeting, December 1, 2020	The City of Rancho Palos Verdes City Council Meeting, December 1, 2020	The City of Rancho Palos Verdes City Council Meeting, December 1, 2020	The City of Rancho Palos Verdes City Council Meeting, December 15, 2020	The City of Rancho Palos Verdes City Council Meeting, December 15, 2020	The City of Rancho Palos Verdes City Council Meeting, December 15, 2020
7:30 AM - 8:00 AM							
8:00 AM - 8:30 AM							
8:30 AM - 9:00 AM							
09:00 AM - 9:30 AM							
9:30 AM - 10:00 AM							
10:00 AM -10:30AM							
10:30 AM -11:00AM							
11:00 AM -11:30 AM	The City of Rancho Palos Verdes Planning Commission Meeting, December 8, 2020	The City of Rancho Palos Verdes Planning Commission Meeting, December 8, 2020	The City of Rancho Palos Verdes Planning Commission Meeting, December 8, 2020	The City of Rancho Palos Verdes Planning Commission Meeting, December 8, 2020	The City of Rancho Palos Verdes Planning Commission Meeting, December 8, 2020	The City of Rancho Palos Verdes Planning Commission Meeting, December 8, 2020	The City of Rancho Palos Verdes Planning Commission Meeting, December 8, 2020
11:30 AM -12:00PM							
12:00 PM -12:30PM							
12:30 PM - 1:00PM							
1:00 PM - 1:30PM							
1:30 PM - 2:00PM							
2:00 PM - 2:30PM	Community Announcements	Community Announcements	Community Announcements	Community Announcements	Community Announcements	Community Announcements	Community Announcements
2:30 PM - 3:00PM	Community Announcements	Community Announcements	Community Announcements	Community Announcements	Community Announcements	Community Announcements	Community Announcements
3:00 PM - 3:30PM							
3:30 PM - 4:00PM	Community Announcements	Community Announcements	Community Announcements	Community Announcements	Community Announcements	Community Announcements	Community Announcements
4:00 PM - 4:30PM	Community Announcements	Community Announcements	Community Announcements	Community Announcements	Community Announcements	Community Announcements	Community Announcements
4:30 PM - 5:00PM							
5:00 PM - 5:30PM	Community Announcements	Community Announcements	Community Announcements	Community Announcements	Community Announcements	Community Announcements	Community Announcements
5:30 PM - 6:00PM	Community Announcements	Community Announcements	Community Announcements	Community Announcements	Community Announcements	Community Announcements	Community Announcements
6:00 PM - 6:30PM							
6:30 PM - 7:00PM							
7:00 PM - 7:30PM	Community Announcements	The Palos Verdes Peninsula Unified School District (PVPUSD) Board of Education Meeting	The City of Rancho Palos Verdes LIVE City Council Meeting, December 15, 2020	Community Announcements	Community Announcements	Community Announcements	Community Announcements
7:30 PM - 8:00PM	The City of Rancho Palos Verdes City Council Meeting, December 1, 2020					The City of Rolling Hills Estates City Council Meeting	The City of Rancho Palos Verdes City Council Meeting, December 15, 2020
8:00 PM - 8:30PM							
8:30 PM - 9:00PM							
9:00 PM - 9:30PM							
9:30 PM - 10:00PM							
10:00 PM -10:30PM							
10:30 PM -11:00PM							
11:00 PM -11:30PM							
11:30 PM -12:00 AM							
12:00 AM - 1:00 AM							
1:00 AM - 6:00 AM							

Comments or questions? Please email us at [RPVtv@rpvca.gov](mailto:RPVtv@rpvca.gov)



## LOS ANGELES COUNTY SHERIFF'S DEPARTMENT- LOMITA STATION REPORTED CRIMES & ARRESTS BETWEEN (11/22/2020 - 11/28/2020)



### LOMITA:

CRIME	FILE #	RD	DATE	TIME	LOCATION-PUBLIC	METHOD OF ENTRY	LOSS-PUBLIC	ADDITIONAL INFORMATION-PUBLIC
GRAND THEFT (CATALYTIC CONVERTER)	20-04125	1714	11/25/2020	0409	NARBONNE AVE/ PCH	CATALYTIC CONVERTER	CATALYTIC CONVERTER	2 SUSPECTS ARRESTED
BURGLARY (VEHICLE)	20-04153	1713	11/27/2020	0505	25000 BLK CYPRESS ST	N/A	BAG, SUNGLASSES, GLASSES, FOLDER, CLOTHES, COLOGNE, US CURRENCY	SUSPECT MW/35/511/175 WRG DARK COLORED JEANS, CHECKERED SWEATER, "VANS" SHOES, AND A MASK.
GRAND THEFT (AUTO)	20-04161	1714	11/28/2020-11/29/2020	1900-0700	1900 BLK PCH	N/A	WHITE 1994 FORD F150	SUSPECT(S) UNKNOWN
ATTEMPT GRAND THEFT (AUTO)	20-04162	1713	11/24/2020-11/29/2020	1400-1130	1900 BLK 259TH PL	N/A	SILVER 2004 GMC SIERRA	SUSPECT(S) UNKNOWN
ATTEMPT GRAND THEFT (AUTO)	20-04164	1713	11/28/2020-11/29/2020	1430-1200	1800 BLK 262ND ST	N/A	WHITE 2000 GMC SIERRA	SUSPECT(S) UNKNOWN
BURGLARY (VEHICLE)	20-04199	1713	11/29/2020-12/1/2020	1500-1230	25000 BLK VIANA AVE	DRIVER'S SIDE DOOR LOCK PUNCHED OUT AND STEERING COLUMN POPPED AND REMOVED	TOOL	SUSPECT(S) UNKNOWN
TOTAL ARRESTS: ATTEMPT RAPE - 1, CARRYING A LOADED FIREARM - 2, DOMESTIC BATTERY - 1, GRAND THEFT - 1, THEFT OF CREDIT OR DEBIT CARD INFO - 1, VEHICLE VIOLATIONS - 3, WARRANTS - 4								

### RANCHO PALOS VERDES:

CRIME	FILE #	RD	DATE	TIME	LOCATION-PUBLIC	METHOD OF ENTRY	LOSS-PUBLIC	ADDITIONAL INFORMATION-PUBLIC
BURGLARY (VEHICLE)	20-04099	1735	11/23/2020	0229	29000 BLK SPRUCEGROVE DR	FRONT PASSENGER SIDE WINDOW SHATTERED	PURSE, WALLET, CREDIT AND DEBIT CARD	S1 MALE WRG A HOODIE, PANTS, AND SOME TYPE OF FACE MASK.

BURGLARY (RESIDENTIAL)	20-04106	1730	11/23/2020	1130- 1715	26000 BLK INDIAN PEAK RD	N/A	NO LOSS	SUSPECT(S) UNKNOWN
BURGLARY (VEHICLE)	20-04107	1735	11/22/2020- 11/23/2020	1800- 0800	6900 BLK PURPLE RIDGE DR	N/A	WALLET, KEYS, US CURRENCY, CDL, CREDIT CARD	SUSPECT(S) UNKNOWN
BURGLARY (VEHICLE)	20-04111	1745	11/23/2020- 11/24/2020	2000- 0800	MUSTANG RD	PASSENGER SIDE WINDOW SHATTERED	BACKPACK, DIVING EQUIPMENT	SUSPECT(S) UNKNOWN
GRAND THEFT (CATALYTIC CONVERTER)	20-04136	1746	11/24/2020- 11/25/2020	1700- 1230	1800 BLK CADDINGTON DR	CATALYTIC CONVERTER	CATALYTIC CONVERTER	SUSPECT(S) UNKNOWN
ATTEMPT GRAND THEFT (AUTO)	20-04143	1742	11/25/2020- 11/26/2020	1900- 0730	3800 BLK PIRATE DR	N/A	SILVER 2005 GMC YUKON	SUSPECT(S) UNKNOWN
PETTY THEFT	20-04171	1730	11/25/2020- 11/29/2020	1230- 1400	6000 BLK GROVEOAK PL	N/A	BEAM	SUSPECT(S) UNKNOWN
TOTAL ARRESTS: BATTERY - 1, CRIMINAL THREATS - 1, DRUGS - 1, RESISTING ARREST - 1								

**ROLLING HILLS:**

CRIME	FILE #	RD	DATE	TIME	LOCATION-PUBLIC	METHOD OF ENTRY	LOSS-PUBLIC	ADDITIONAL INFORMATION-PUBLIC
NO CRIMES DURING THIS TIME								
NO ARRESTS DURING THIS TIME								

**ROLLING HILLS ESTATES:**

CRIME	FILE #	RD	DATE	TIME	LOCATION-PUBLIC	METHOD OF ENTRY	LOSS-PUBLIC	ADDITIONAL INFORMATION-PUBLIC
ROBBERY	20-04087	1724	11/22/2020	0820	PENINSULA CTR	N/A	ALCOHOL, FOOD	S1 FB/40-50/505/HEAVY SET/BLK HAIR/BRN EYES. S2 FB/50-60/BLK HAIR. SUSPS WERE SEEN LEAVING LOC IN A WHITE 4 DR CHRYSLER PT CRUISER W/ TINTED WINDOWS.
VEHICLE VIOLATIONS - 1								

**SAN PEDRO:**

CRIME	FILE #	RD	DATE	TIME	LOCATION-PUBLIC	METHOD OF ENTRY	LOSS-PUBLIC	ADDITIONAL INFORMATION-PUBLIC
GRAND THEFT (CATALYTIC CONVERTER)	20-04126	1750	11/24/2020- 11/25/2020	2130	1ST ST/ BANDINI ST	CATALYTIC CONVERTER	CATALYTIC CONVERTER	SUSPECT(S) UNKNOWN
DRUGS - 1, DRUNK IN PUBLIC - 1, VEHICLE VIOLATIONS - 1								

**PVP:**

CRIME	FILE #	RD	DATE	TIME	LOCATION-PUBLIC	METHOD OF ENTRY	LOSS-PUBLIC	ADDITIONAL INFORMATION-PUBLIC
NO CRIMES DURING THIS TIME								
VEHICLE VIOLATIONS - 1								

**\*\*Data included in this report is time sensitive and subject to change.**



# SPECIAL BULLETIN

SHERIFF ALEX VILLANUEVA

## PUBLIC SERVICE ANNOUNCEMENT

### RESIDENTIAL BURGLARIES

LASD Lomita's Surveillance Apprehension Team (SAT) has been actively investigating residential burglaries that have occurred throughout the station's reporting districts. In joint efforts with neighboring law enforcement agencies, detectives have seen burglary incidents taking place at homes that back up to trails, golf courses, or open areas throughout the Southern California area.

With the holidays quickly approaching, the risk of such crimes increases. Look below to find some helpful tips on how to prevent such burglaries from taking place at your home.

#### **TIPS:**

- See something, say something.
- Communicate with neighbors and let them know if you'll be leaving town.
- Make your residence appear like you are home i.e. lighting that turns on with timers.



## PUBLIC RECORDS ACT REQUESTS - TRACKING LOG 2020

DATE OF REQUEST	DATE RECEIVED	REQUESTOR	SUBJECT	ACTION TAKEN
5/18/2020	5/18/2020	Jeff Lewis	Request for various emails, communications, invoices former Councilmember and Staff	5/28/20 Letter was sent to requestor requesting clarification.
7/10/2020	7/10/2020	Mathew Gelfand	All documents and communications (including email, social media, texts, etc) for: 1) Documents related to California's ADU laws; 2) ADU guidance documents; 3) Application records for ADU's	7/10/20 AA Zweizig forwarded request to staff. 7/20/20 Staff sent 14-day extension. 8/3/20 AA Zweizig sent determination letter and sent first production of documents. 8/17/20 AA Zweizig sent determination letter and sent second production of documents. 10/12/20 AA Momoli sent second extension. 10/16/20 AA Zweizig notified requestor first production of emails are ready and costs for production. 10/29/20 AA Zweizig emailed first and second production of emails. 11/5/20 AA Zweizig requested deposit for remaining responsive documents. Request will close unless a response is received from the requestor.
11/17/2020	11/17/2020	Sahra Mirbabaee	1) All Planning and Zoning Division records (including but not limited to planning and zoning documents, land use determinations, site plans, e-mails, notices, and other associated documents) relating to the property located at 30800 Palos Verdes Drive East (APN: 7564-024-002 and 7654-024-001); and 2) All Building and Safety Division records (including but not limited to building permits, code violations, stop work orders, e-mails, and other associated documents) relating to the property located at 30800 Palos Verdes Drive East (APN: 7564-024-002 and 7654-024-001)  Modified Request: "prioritize any documents related to discretionary or non-discretionary land use entitlements. For example, if there was a Conditional Use Permit issued for the property, I'd like the original approval/determination letter as well any subsequent plan approvals or City actions related to that entitlement. In addition, if there are any recorded documents or agreements about the property or its operations, then I'd like a copy of those as well"	11/17/20 AA Zweizig forwarded request to staff. 11/24/20 AA Zweizig emailed requestor to possibly narrow search due to voluminous responsive documents. Ms. Mribabaee refined her request. 11/25/20 AA Zweizig sent 14-day extension letter. 12/3/20 AA Zweizig forwarded responsive documents to requestor. Awaiting responses from CDD regarding additional questions/requests.
11/20/2020	11/20/2020	Christopher Peres	Centerline ties on Golden Spur Ln	11/20/20 DCC Takaoka forwarded request to staff.
11/20/2020	11/20/2020	Fatima Garcia	copy of the licensee application, copies of licenses issued, and a Certified License history for the following, during the years of 2013-2017. Our department seeks to confirm the correct legal name of the owner, if you have copies of Driver License information, please provide those records as well.  ANTHONY MARTINEZ, DBA, AMALFITANO BAKERY 29111 S Western Ave, Rancho Palos Verdes, CA 90275	11/20/20 DCC Takaoka forwarded request to staff. 12/3/20 extension letter sent.

## PUBLIC RECORDS ACT REQUESTS - TRACKING LOG 2020

DATE OF REQUEST	DATE RECEIVED	REQUESTOR	SUBJECT	ACTION TAKEN
11/24/2020	11/24/2020	Maria Cofano	Request for documents related to the property 100 Terranea Way	11/24/20 AA Zweizig forwarded request to staff. 11/30/20 AA Zweizig responded to requestor. 12/7/20 AA Zweizig sent 14-day extension letter.
11/24/2020	11/24/2020	James Morrison	Oceanfront Estates covenant	11/24/20 DCC Takaoka forwarded request to staff.
11/30/2020	11/30/2020	David Fahrenthold	Requesting ;1.)Any correspondence between the city and employees of Trump National Golf Club, Los Angeles or employees of the Trump Organization that references covid-19, the coronavirus pandemic, or the measures taken by California, LA County or the city of Rancho Palos Verdes to slow the spread of covid-19. 2.)Any inspection reports or inspection summaries made by employees of the city, detailing their observations of how Trump National Golf Club, Los Angeles was observing (or not observing) restrictions imposed by the county or state to slow the spread of covid-19. 3.)Any citations, warnings or other documents showing violations (or reports of violations) of state, county or city orders intended to stop the spread of covid-19 at Trump National Golf Club, Los Angeles. The timeframe for this request is from February 1, 2020 to the present.	11/30/20 AA Momoli forwarded request to staff.
11/30/2020	11/30/2020	April Steiger	1) Copy of "Partial Boundary Survey" sheet C1.0 (approx. size 24" x 36") for 29138 Oceanridge Drive and 2) Copy of all emails sent to/from owner(s) of 29138 Oceanridge Drive. Last name is Tymczyszyn (John and/or Sarah). Period covered: October 1, 2020 to current.	11/30/20 AA Zweizig forwarded request to staff.
12/1/2020	12/1/2020	Hing Ngai	Requesting information on a water drainage system on 6735 Alta Vista Drive	12/1/20 AA Momoli forwarded request to staff.
12/8/2020	12/8/2020	Lisa Mo	Copy of all current contracts for Multi-Function Devices (e.g. Konica Minolta, Xerox), printers, and copiers, including equipment costs, applicable lease agreements, maintenance and costs. In addition to any managed IT services contracts such as staff augmentation or help desk support.	12/8/20 AA Zweizig forwarded request to staff.



ERIC ALEGRIA, MAYOR  
DAVID L. BRADLEY, MAYOR PRO TEM  
JOHN CRUIKSHANK, COUNCILMEMBER  
KEN DYDA, COUNCILMEMBER  
BARBARA FERRARO, COUNCILMEMBER

December 4, 2020

L.A. County Board of Supervisors  
Kenneth Hahn Hall of Administration  
500 West Temple Street  
Los Angeles, CA 90012

The Honorable Dr. Barbara Ferrer  
L.A. County Public Health Director  
5050 Commerce Drive  
Baldwin Park, CA 91706

**SUBJECT: City of Rancho Palos Verdes – Request to Rescind Closure of Outdoor Dining**

Dear Supervisors and Dr. Ferrer:

On behalf of the residents and business owners in the City of Rancho Palos Verdes, we are once again writing to voice our concerns regarding the recent Temporary Targeted Safer at Home Health Officer Order for Control of COVID-19: Tier 1 Substantial Surge Response issued November 28, 2020. Due to the lack of specific data indicating such drastic actions are warranted or effective for the City of Rancho Palos Verdes and the Palos Verdes Peninsula in general, we strongly urge the Board to reconsider this impactful decision and take the necessary steps to rescind the action that requires the shutdown of outdoor dining. Other adjacent counties, as close as Orange and Ventura Counties, have not moved in this direction and taken such blanket drastic action.

Los Angeles County, being comparable to the size of Delaware and Rhode Island combined, is the largest populated County in the United States, and larger in population than 41 individual states. The "one size fits all health officer orders" is simply not workable and should not be looked at monolithically, but rather divided into constituent parts to help ease the burden and craft area specific remedies.

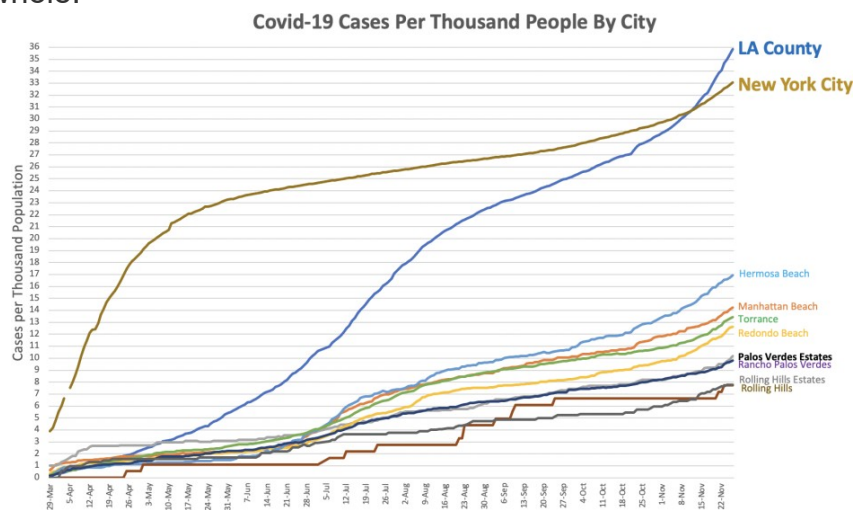
Currently, LA County Public Health's web site states, "Due to the large size of LA County (4,300 square miles), it has been divided into eight geographic areas (Service

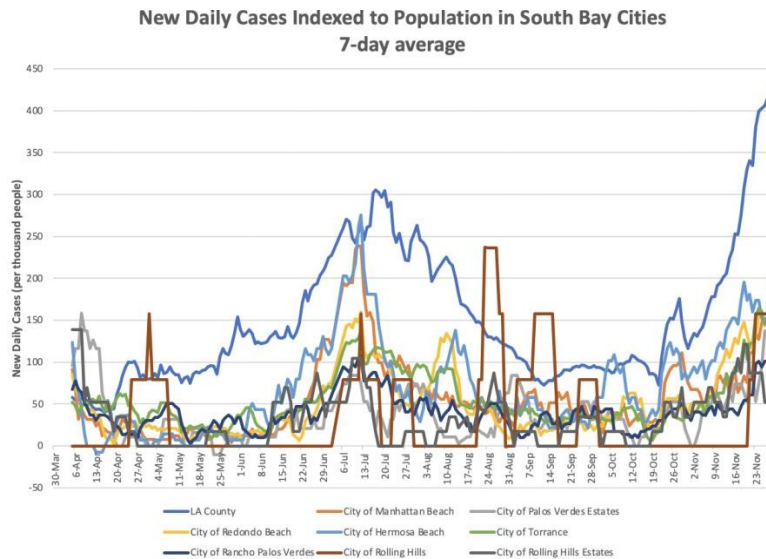
**L.A. County Board of Supervisors and Dr. Ferrer**  
**December 4, 2020**  
**Page 2**

Planning Areas ((SPA)). These distinct regions allow the Department of Public Health to develop and ***provide more relevant public health and clinical services targeted to the specific health needs of the residents in these different areas.*** We agree and urge the department to begin implementing COVID-19 responses by area!

To that point, we request that you appoint deputy directors for each of the eight districts to govern and service our communities better. Each deputy director can collect precise data for their respective district to “provide more relevant public health and clinical services targeted to the specific health needs of the residents in the different areas.” By not basing directives on precise data specific to the service areas, it compels cities, such as Rancho Palos Verdes, to consider exploring creating its own health department.

The concern with a County-wide blanket shut down of all outdoor dining without regard to the science and data is best illustrated on the chart below. It seems unfair to our residents, who are reasonably controlling the pandemic by following mitigation measures of wearing a mask, socially distancing, and their businesses who have invested in protective equipment and diligent sanitation to be “lumped in” with the County as a whole.

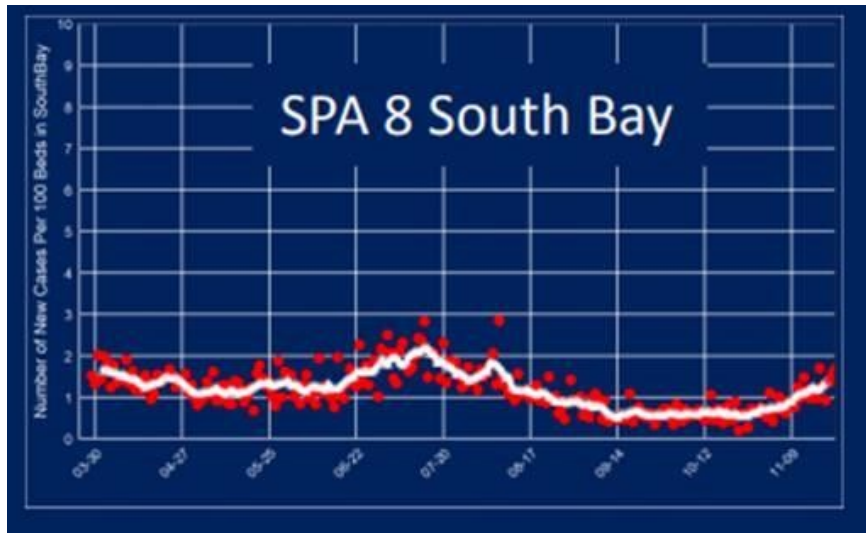




We mourn every death from COVID-19; however, death rates in Rancho Palos Verdes, compared to other deaths from various causes, are also statistically negligible. For example, for the City of Torrance, the COVID-19 attributed death rate is 0.05% per capita, Rolling Hills Estates 0.04%, Palos Verdes Estates 0.01%, Manhattan Beach 0.01%, Rolling Hills 0.00%, Redondo Beach 0.02%, El Segundo 0.01%, and ***Rancho Palos Verdes 0.03%***.

Our hospitalization rates are also different. We do not suffer from the lack of beds or ICU capacity in our world-class hospitals like Torrance Memorial, Providence Little Company of Mary, etc. The image below for the South Bay region (District 8) is currently reporting nearly two new cases per 100 hospital beds, which is among the lowest of the region. In the summer surge, the South Bay region number was closer to three. Other regions within the County are currently reporting between four and six new cases per 100 beds. According to representatives from some of the South Bay hospitals, many of the patients being admitted are not residents of the area. **Thus, underscoring the relatively low case rates in the South Bay and further justifying directives that are region district based.**





Your actions are devastating our communities, especially our communities who need the most employment and economic stability. Our small businesses are our economic engine. While disproportionately allowing large companies to operate, you have made it impossible for small businesses, in this case, mostly restaurants, to continue their existence. As the California Restaurant Owners Association aptly pointed out in its recent filings with the Los Angeles Superior Court, this “order would have devastating impacts on a vulnerable population; jobs in the food industry would be lost during this government-imposed shutdown.” See Kathryn Barger, ‘Supervisor Barger Opposes Unnecessary Restrictions,’ November 23, 2020, at <https://kathrynbarger.lacounty.gov/supervisor-barger-opposes-unnecessary-restrictions/>. Employees at or near the poverty line would be most affected, as 75% of all projected job losses affect workers who earn \$50,000 or less. Likewise, over 60% of Los Angeles restauranteurs and workers are people of color, who face disproportionate burdens by further restaurant closures. These economically fragile workers have already gone through the whipsaw of government shutdowns and reopenings and have gone to extraordinary lengths just to survive in the face of constantly changing requirements dictated by state and county officials.”

By contrast, Governor Newsom’s “Blueprint for a Safe Economy” “Has always contemplated allowing restaurants to operate outdoor dining throughout the pandemic, consistent with the scientific understanding that spread of the coronavirus is severely limited in outdoor conditions.” Governor Newsom has dictated that California’s response to the coronavirus pandemic “must be driven” by a scientific analysis of the effects of this latest closure order. Yet the County Health Officials have failed to articulate a scientific rationale that would even explain their departure from Governor Newsom’s Blueprint for a Safe Economy. Other counties in the Purple Tier with higher infection and new case rates have not moved in this direction.

Based on the information publicly provided, there is simply not enough scientific evidence to support the modified order to shut down outdoor dining, which has jeopardized tens of thousands of jobs and businesses. Based upon the data from the County, only 10 to 15 percent of positive cases reported dining out with someone who tested positive, while more than 50 percent reported being at a private social gathering with someone who was COVID-19 positive. Decisions not to ban outdoor dining universally exist in every other county in the Purple Tier, and the City of Pasadena.

Additionally, the City of Los Angeles, which represents 40% of the population of Los Angeles County also urged the Board to make the right decision for its constituents. It is our understanding that many more Los Angeles County cities and council of governments (COGs), such as the South Bay COG, have or will be taking a similar stance.

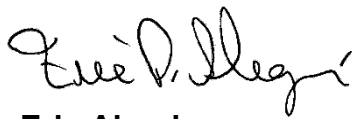
It goes without saying that the restaurant industry, including here in Rancho Palos Verdes, have been devastated by the impacts of the pandemic. Restaurants have invested time and money to appropriately adjust their operations to adhere to outdoor dining restrictions and prepare for the upcoming winter months. By continuing the stance to ban outdoor dining, the County will do nothing more than drive residents to host and attend private indoor gatherings and encourage our residents to patronize business in neighboring counties and the City of Pasadena.

Government has asked its citizens to make unimaginable sacrifices and has failed in providing the appropriate support to those who need it. While many people are doing their part, we acknowledge more can be done to stop the COVID-19 spread, but this approach is not the way to get there. To slow the spread, we must put more emphasis on holding each other accountable, encourage physical distancing, wear face coverings and investing in protective equipment and sanitation measures for businesses. Our constituents and businesses are doing just that, and are now asking why they are being punished for following the measures advised by health officials and doing their part to reasonably control the pandemic.

We continue to urge the County to factor in local transmission data when developing restrictions and reopening plans, rather than imposing the most severe limitations across the vast county, with its varying rates of infection. This includes the school waiver process, which is based on the percentage of students who are eligible for free or reduced-price meals, not community case and positivity rates. We acknowledge and respect the common goal not to overwhelm the healthcare system but stand firmly by the opinion that this shortsighted order does not support a long-term approach to the well-being of our collective community.

The City Council would like to thank Supervisors Kathryn Barger and Janice Hahn for their open opposition to the recent order and urge the Board to take a common-sense approach to the ongoing challenges of COVID-19 so as to not further the impact on small businesses. Again, we ask that you promptly reconsider your decision and allow restaurants to continue serving their customers in county-approved outdoor dining environments especially during the holiday season. We understand your concerns and do not question your heart. We need to learn to live with this deadly virus rather than hide from it indefinitely.

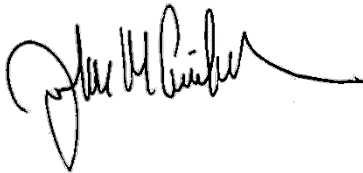
Sincerely,




**Eric Alegria**  
Mayor



**Dave Bradley**  
Mayor Pro Tem



**John Cruikshank**  
Councilmember



**Ken Dyda**  
Councilmember



**Barbara Ferraro**  
Councilmember

**L.A. County Board of Supervisors and Dr. Ferrer**  
**December 4, 2020**  
**Page 7**

cc: Ben Allen, Senator, 26<sup>th</sup> State Senate District  
Al Muratsuchi, Assembly Member, 66<sup>th</sup> Assembly District  
Rancho Palos Verdes City Council  
Ara Mihranian, City Manager  
Karina Bañales, Deputy City Manager  
William Wynder, City Attorney  
Rolling Hills Estates City Council  
Palos Verdes Estates City Council  
Rolling Hills City Council  
Jacki Bacharach, SBCCOG  
Eileen Hupp, Palos Verdes Chamber of Commerce



December 7, 2020

The Honorable Kathryn Barger and Members of the Board of Supervisors  
Los Angeles County Board of Supervisors  
500 W. Temple Street  
Los Angeles, CA 90012

Dear Honorable Chair Barger and Members of the Board of Supervisors,

We, the four cities on the Palos Verdes Peninsula, firmly joined together by a common cause, are writing to you today to request you to follow science and, more importantly, data and statistics to make decisions about COVID-19 across our Los Angeles County (County). We support our colleagues throughout 88 cities of the County who oppose your decision. In strong terms, we also support our South Bay COG's position, which in a letter on December 1, 2020, highlighted the importance of a decentralized approach to the pandemic response. Before many cities and regions consider forming their own health departments, we ask for the restructuring of the County Health Department's governance to fit the mission described on its web site.

Los Angeles County, the size of Delaware and Rhode Island combined, is the largest populated County in the United States, and larger in population than 41 individual states. As such, a "one size fits all" approach to policymaking is simply not workable and has become untenable.

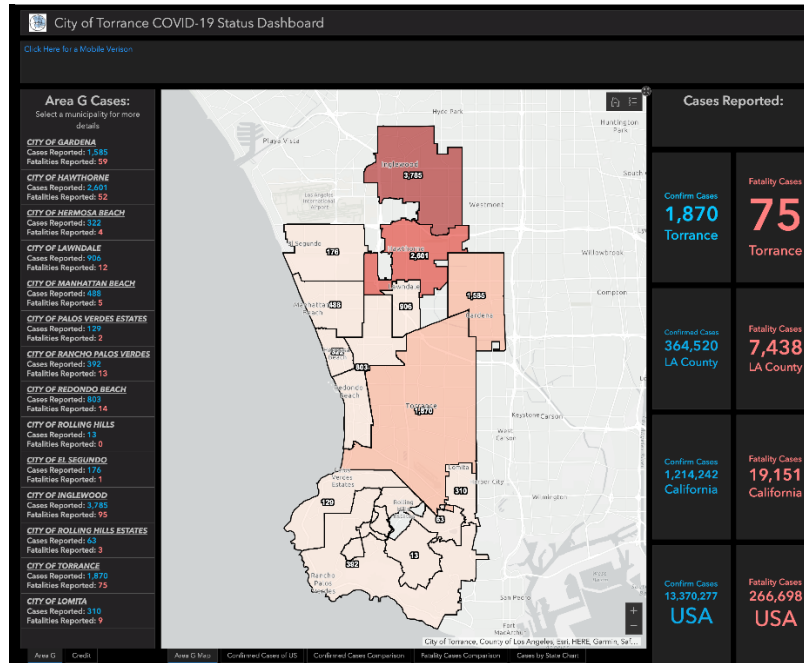
As you know, the County of Los Angeles Public Health's web site states, "Due to the large size of LA County (4,300 square miles), it has been divided into eight geographic areas (Service Planning Areas ((SPA)). These distinct regions allow the Department of Public Health to develop and provide more relevant public health and clinical services targeted to the specific health needs of the residents in these different areas." We agree and urge the Department of Public Health to begin implementing COVID-19 responses by area.

We respectfully request that each district collects precise data for its respective district to "provide more relevant public health and clinical services targeted to the specific health needs of the residents in these different areas." This precision already in place is all we ask to govern and serve our communities better.

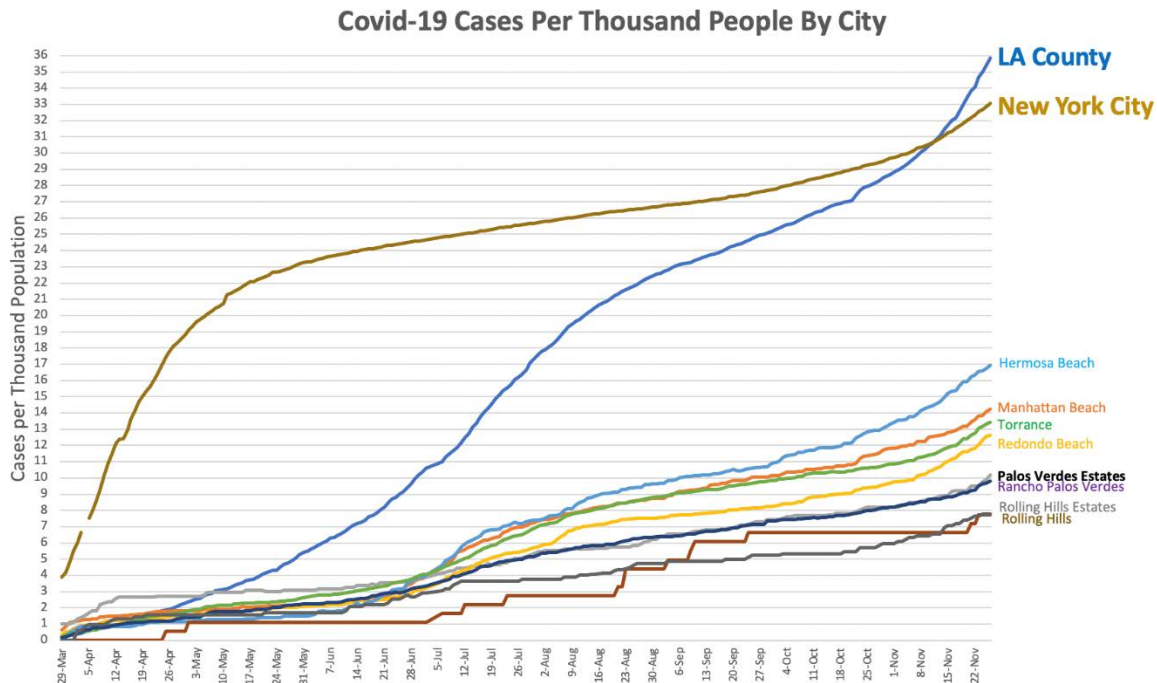
The undersigned are elected representatives of jurisdictions located in "District 8 (South Bay)." Our geographic, demographic, and pandemic realities are substantially different than other districts in this vast and beautiful County. The County's decisions ignore these realities. To be specific and to use the County data, here is how our jurisdictions compare to others.

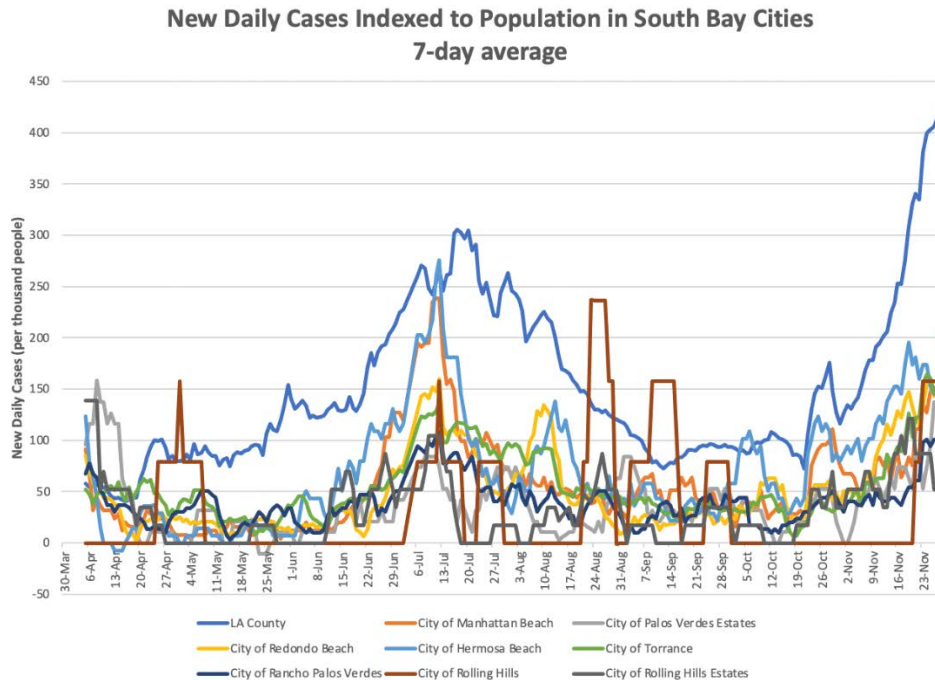
The City of Torrance prepared the chart below for the majority of jurisdictions in District 8. This chart makes it abundantly clear our realities compared to those of the County at large.





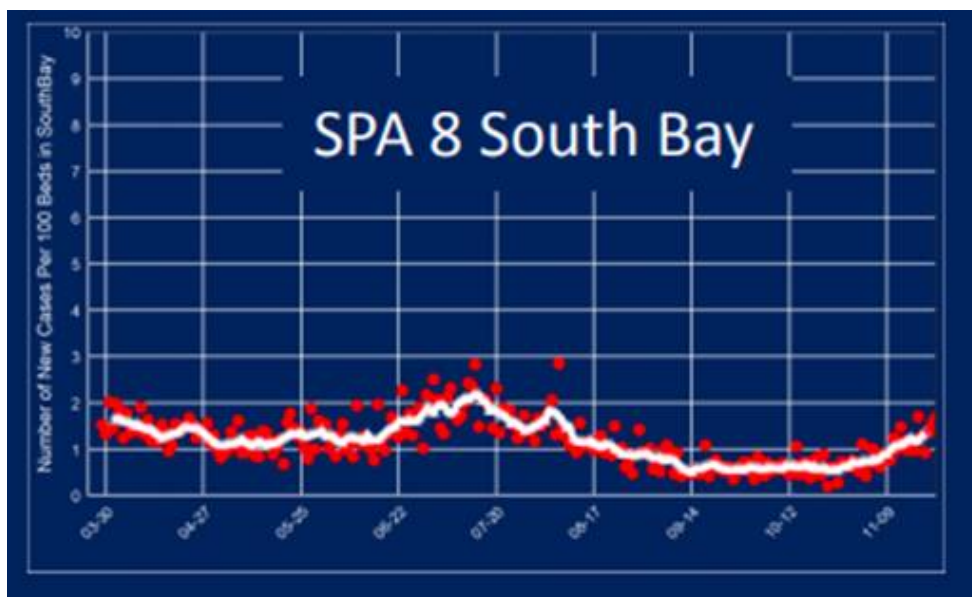
To further illustrate our point, we highlight a few specific comparisons in District 8 from the beginning of the pandemic to November 22. This data presumably became the basis to shut all outdoor dining in the County without regard to the science and data shown on the chart below. While this data represented your decision point last week, our current data as of yesterday does not show much change at all. Our constituents want to know why their excellent work of reasonably controlling the pandemic by following mitigation measures of wearing a mask, socially distancing, and their businesses investing in protective equipment and diligent sanitation is being punished.





Every death is tragic; however, our death rates, compared to other deaths from various causes, are also statistically negligible. For example, the COVID-19 attributed death rate per capita on the Palos Verdes Peninsula is extremely low: **Rancho Palos Verdes is 0.03%, Palos Verdes Estates is 0.01%, Rolling Hills Estates is 0.04%, and Rolling Hills is 0.00%.**

Our hospitalization rates are also different. We do not suffer from the lack of beds or ICU capacity in our world-class hospitals like Torrance Memorial, Providence Little Company of Mary, etc. The image below for the South Bay region (District 8) is currently reporting nearly two new cases per 100 hospital beds, which is among the lowest of the region. In the summer surge, the South Bay region number was closer to three.



We expect policy decisions affecting our community to be based on our jurisdictions' statistics rather than the County's collective data. We, as a vast County, must reverse this course. Every signatory to this letter respects you all. We have a tradition of working with you in contract cities as well as independent cities. We also understand your concerns. By our requests, we do not question your heart. We suggest that we need to learn to live with this deadly virus rather than hide from it indefinitely. We seek collaboration as opposed to competition with your policy.

The County's actions are devastating our communities, especially our communities who need the most employment and economic stability. Our small businesses are our backbone. While disproportionately allowing large companies to operate, you have made it impossible for small businesses, in this case, mostly restaurants, to continue their existence. Our chefs, servers, kitchen staff depend on their wages and tips to feed their families. To the extent that funds are available, we urge you to work with the Governor to use some of the unexpected tax proceeds of \$26 billion to provide relief to small businesses and restaurants that are struggling to survive.

Our local jurisdictions, especially those that are "low, low" property tax cities, rely on sales tax revenue to provide local services. Some of these services under the contracting model are provided by the County for a fee. While the County takes close to 25% of the property tax revenue (not counting County related special districts revenues for another 25%), most of our "low, low" property tax cities receive less than 7%. The County's actions are also devastating to our cities. Unfortunately, there is no data to support your last decision countywide, much less in our jurisdictions. We have seen no evidence that outdoor dining is the cause of any COVID case surge in various parts of the County. The City of Pasadena chose science and data over your decision. We in District 8 ask for the same treatment as Pasadena, which is located in the same County.

While we disagree with the state's "one sizes fits all" approach, we understand that the County is currently operating under the state's Stay-at-Home Order for the Southern California Region due to ICU bed capacity. When the state's Order is lifted, we respectfully ask that you act on our request for a regional approach using regional data. In particular, we expect the re-opening of our outdoor dining facilities as soon as possible. Failing to do so is causing some cities to explore constituting their own health departments.

Respectfully,

David McGowan,  
City of Palos Verdes Estates, Mayor

Eric Alegria  
City of Rancho Palos Verdes, Mayor

Jeff Pieper  
City of Rolling Hills, Mayor

Velveth Schmitz  
City of Rolling Hills Estates, Mayor




**RICARDO LARA**  
INSURANCE COMMISSIONER

California Department of Insurance

California Department of Insurance  
Community Relations and Outreach Branch  
Presented by Peter Meza

1

### CALIFORNIA INSURANCE TRENDS: AVAILABILITY AND AFFORDABILITY

The California Department of Insurance Recognizes that homeowners—especially in the WUI—are experiencing:

- ▶ **Non-renewals:** 600% increase in complaints to the Department since 2010
- ▶ **Premium Increases:** More than 270 rate increases filed by insurers 2017-present
- ▶ **Lack of available insurance** in the traditional homeowners and renters' market
- ▶ **FAIR Plan Coverage** that is not as comprehensive as traditional HO insurance

2


### INCREASED RISK DRIVING ISSUES

- ▶ 11 of the 20 most destructive wildfires in California's history have occurred in the last four years
- ▶ As risk increases, the cost of insurance increases and the availability of coverage decreases
- ▶ Insurers consider the very recent past to underwrite and to determine rates for the very near future— [\$25 billion in losses in 2017-2018]


3

### RESIDENTIAL UNDERWRITING

**OLD SCHOOL**



**NEW SCHOOL**



Insurers traditionally evaluated each home based almost entirely on its own characteristics and condition. Today, homes must first pass through an evaluation filter based on satellite imagery of the region that evaluates slope, fuel load and type of fuel, and access.

**RICARDO LARA**  
Insurance Commissioner  
California Department of Insurance

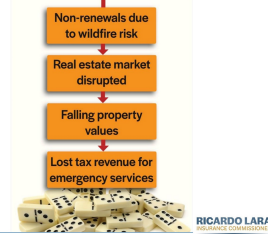
4

## INSURANCE CONSUMERS SHOULD BE ABLE TO RELY ON THEIR COVERAGE

- ▶ **Non-renewals are unjust and unfair:**
  - ▶ No consideration of individual tenure or claims history
  - ▶ No consideration of pre-fire mitigation and/or home "fire hardening"
  - ▶ No change in the individual risk
- ▶ **No clear statewide standards for a fire resistant structure or mitigated property**
- ▶ **Insufficient coverage limits with FAIR Plan**
- ▶ **Many homeowners on fixed incomes purchased homes and obtained insurance long before today's convergence of issues were even a minor concern**

5

## Wildfire 'Domino Effect' on communities



6

## REDUCING RISK THROUGH PREVENTION AND MITIGATION

The best way to make homeowners insurance more available and affordable is to decrease the risk of loss. This includes looking at where we build and investing in pre-disaster prevention and mitigation efforts:

- ▶ **Building Codes**
- ▶ **Fire Resistant Modifications**
- ▶ **Land Use Planning**
- ▶ **Community-wide Abatement**
- ▶ **Defensible Space**
- ▶ **Enhanced Infrastructure**
- ▶ **Wildfire Sensors**

7

## NEW WILDFIRE LAWS FOR 2019-2020

- ▶ **SB 824 (Lara)** created non-renewal protection for all homes in a declared disaster area that do not suffer a total loss, require data on wildfire risk scores
- ▶ **SB 894 (Dodd/McGuire), AB 1772 (Aguiar-Curry/Wood), AB 1800 (Levine)** extends additional living expenses from 24 months to 36 months and two guaranteed renewals following total loss
- ▶ **AB 38 (Wood)**: State-level fund created to provide financial assistance to homeowners to help pay for costs of fire hardening their homes

8



## NEW WILDFIRE LAWS FOR 2019-2020

- ▶ **SB 190 (Dodd):** State Fire Marshal to develop model defensible space requirements and fire safety building standards for local government
- ▶ **SB 240 (Dodd):** Increased oversight of out-of-state adjusters following disaster
- ▶ **SB 508 (Leyva):** Insurers mandated to provide important consumer disclosures to mobile/manufactured homeowners, renters, condo owners about insurance coverage and claims
- ▶ **AB 1816 (Daly):** Increase to 75 days advance notice (was 45 days) to policyholders of policy non-renewals

9

## ACTION TO FREEZE NON-RENEWALS

- ▶ We called for a statewide one-year stop to non-renewals [2019] Mandatory for those near recent wildfire disasters because of SB 824
  - ▶ **1 Million**=Homes and rentals affected by mandatory moratorium
  - ▶ **3.6 Million**=Homes in the wildland urban interface
  - ▶ **16**=State wildfire emergencies declared in 2019
  - ▶ **180+ Number of ZIP Codes** covered by mandatory moratorium (There is a new non-renewals moratorium for the fires in 2020)

10

## 2020 ACTION PLAN - HEARING

- ▶ The Commissioner convened an investigatory Hearing on October 19, 2020 to take public input on the impact of wildfires on the availability and affordability of residential insurance from homeowners, first responders, "home hardening" experts, consumer groups, and insurance representatives.
- ▶ At the hearing, the Commissioner announced he will take further regulatory action that will allow homeowners to find and keep their residential property insurance while enhancing competition and availability in the insurance market.

11

## 2020 ACTION PLAN - HEARING

In furtherance of these efforts, the Commissioner will now convene a virtual meeting regarding home hardening standards and wildfire catastrophe modeling in ratemaking. This meeting will include with fire and home hardening experts as well as wildfire catastrophe modeling experts regarding potential administrative and regulatory changes to incentivize home-hardening and discuss models that are based in fire science to protect lives and property.

Please note that it is not necessary to RSVP in advance to virtually observe this meeting.

- ▶ Date: December 10, 2020
- ▶ Time: 9:30am
- ▶ More information will soon be posted at: [www.insurance.ca.gov](http://www.insurance.ca.gov)

12

## 2020 ACTION PLAN – RISK SCORES

- ▶ Require greater transparency for these wildfire risk score models
- ▶ Require these models to take into account community and individual mitigation (current models do not do this)
- ▶ Require these models be open for public review
- ▶ Allow homeowners to appeal their risk score if they believe it is based upon wrong information
- ▶ Give consumers time to address mitigation issues to lower their risk score

13

## HOW THE DEPARTMENT IS RESPONDING

1. **Strike Team:** Since August 2019, the Department of Insurance has met with more than 12,000 people (10K via virtual town halls)
2. **Consumer Hotline:** Staffing hotline to respond to consumer questions and investigate non-renewals for compliance with laws
3. **Enforcement efforts:** Working alongside local law enforcement to deter contractor fraud and allow access to properties for homeowners and adjusters to expedite claims
4. **Local Assistance Center:** Department staff deploy to local shelters and assistance centers alongside other state and local agencies and consumer groups in the aftermath of fires

14

Number of New, Renewed, and Non-Renewed Policies (Voluntary Market)

County	ZIP Code	Year	New	Renewed	Insured-Initiated Nonrenewed	Insurer-Initiated Nonrenewed
LOS ANGELES	90274	2015	852	7,905	154	151
LOS ANGELES	90274	2016	800	7,923	619	151
LOS ANGELES	90274	2017	836	7,979	630	158
LOS ANGELES	90274	2018	791	7,983	629	170
LOS ANGELES	90274	2019	824	7,988	615	138
LOS ANGELES	90275	2015	1,144	11,693	831	242
LOS ANGELES	90275	2016	1,144	11,748	914	230
LOS ANGELES	90275	2017	1,176	11,776	938	205
LOS ANGELES	90275	2018	1,159	11,759	887	222
LOS ANGELES	90275	2019	1,158	11,781	909	202

It includes aggregated counts on the following: homeowners coverage forms similar to HO-2, HO-3, HO-5, HO-8, etc.; dwelling fire forms (including dwelling fire contents only coverage); landlord business owner policies; residential policies of 4 units or less; and mobile homes, representing approximately 98% of the homeowners market. It excludes HO-4 and HO-6 data.

CALIFORNIA DEPARTMENT OF INSURANCE

For Selected Zip Codes

15

Average Premium Paid by a Homeowner (HO-2, HO-3, HO-5, or HO-8)

ZIP Code	Year	Premium	Number of Homes	Average Premium
90274	2015	\$ 14,910,803	7,863	\$ 1,897
90274	2016	\$ 15,164,036	7,808	\$ 1,942
90274	2017	\$ 15,186,213	7,731	\$ 1,964
90274	2018	\$ 15,867,102	7,490	\$ 2,110
90275	2015	\$ 14,457,772	11,384	\$ 1,261
90275	2016	\$ 14,766,852	11,315	\$ 1,305
90275	2017	\$ 14,683,339	11,090	\$ 1,324
90275	2018	\$ 15,311,932	10,830	\$ 1,414

Average premium is based on the total premium earned divided by the number of homes insured at the time. It is dependent on the amount of insurance coverage and deductible chosen. Any change to the policy will affect the average premium. For instance, an increase in limits due to increase in value of home will increase the premium charged not necessarily mean a rate increase.

CALIFORNIA DEPARTMENT OF INSURANCE

For Selected Zip Codes

16



RICARDO LARA  
CALIFORNIA INSURANCE COMMISSIONER

November 5, 2020

REG-2020-00016

**INVITATION TO VIRTUAL MEETING<sup>1</sup> RE: HOME HARDENING STANDARDS AND  
WILDFIRE CATASTROPHE MODELING IN RATEMAKING**

---

Insurance Commissioner Ricardo Lara convened an Investigatory Hearing on October 19, 2020 to take public input on the impact of wildfires on the availability and affordability of residential insurance from homeowners, first responders, “home hardening” experts, consumer groups, and insurance representatives. The testimony received that day highlighted the continuing difficulty that Californians in rural areas and the wildland urban interface (WUI) endure when seeking residential property insurance options, driven by climate change and extreme weather.

Two common questions that arose from the discussion at the hearing were:

- 1) How – if at all – would the use of catastrophe modeling in ratemaking help to make homeowners’ insurance more affordable and more widely available to homeowners?
- 2) How can wildfire mitigation reduce the spread and risks of future wildfires?

At the hearing, the Commissioner announced he will take further regulatory action that will allow homeowners to find and keep their residential property insurance while enhancing competition and availability in the insurance market.

In furtherance of these efforts, the Commissioner will now convene a virtual meeting<sup>2</sup> with fire and home hardening experts as well as wildfire catastrophe modeling experts regarding potential administrative and regulatory changes to incentivize home-hardening and discuss models that are based in fire science to protect lives and property.

***Modeling Wildfire Risk and Mitigation in the Era of Climate Change – A Workshop on Insurance  
Availability and Affordability  
– You Are Invited to Attend –***

The Commissioner’s authority under Proposition 103 includes broad rulemaking authority to prevent excessive, inadequate, or unfairly discriminatory insurance rates in California. This virtual meeting will be live-streamed to the public so all interested persons are able to watch as experts in the field of wildfire science discuss how the Commissioner can use his existing authority to reduce the risk of wildfire spread

---

<sup>1</sup> This meeting will be held under the authority of Insurance Code section 12924 [investigative powers of Commissioner] and also Government Code section 11346.45 [pre-notice public discussions regarding proposed regulations].

<sup>2</sup> Although the Department ordinarily prefers in-person attendance, due to unique circumstances during this pandemic, the Department will use a virtual web-conferencing format for this meeting.

while also enhancing competition in rural and WUI areas of California.

The purpose of this workshop is to provide a technical, fire science-based conversation as the Commissioner considers further administrative actions. Specifically, this meeting will explore the extent to which wildfire catastrophe modeling as a ratemaking tool can impact market competition and insurance availability.

### ***Attendance***

To foster this science-focused, catastrophe modeling discussion looking at home hardening standards for residential property insurance, members of the public are invited to view the event via livestream. This webinar will broadcast in English, American Sign Language, and translated to Spanish in real time. We ask that persons with sight or hearing impairments notify the persons below. Similarly, all interested members of the public should direct inquiries regarding this meeting to the contact persons named below. Please note that it is not necessary to RSVP in advance to virtually observe this meeting.

### ***Date, Time, and Format for Meeting***

Date: December 10, 2020

Time: 9:30am

Location: [Link to Register for the Web-based Virtual Format](#). Web-based Virtual Format: Instructions for viewing will be posted on the Department's website in the near future.

### ***Presentation of Written Comments***

The public is invited to provide written comments related to the topics to be discussed. Persons interested in submitting written comments are invited to submit them following the conclusion of the meeting, but by no later than January 11, 2021.

### ***This is Not a Formal Public Hearing on Proposed Regulations***

Please be advised that this meeting will be in addition to, and not in substitution for, any participation in any formal rulemaking process that may follow. This meeting notice does not constitute a Notice of Proposed Action. Consequently, comments received in connection with this meeting will not be included in any record of rulemaking that may follow.

Any public comments presented will be included in the public record, and the Commissioner will consider all comments received in connection with this meeting as he contemplates regulatory changes that may be proposed in a subsequent Notice of Proposed Action.

### ***Contact Persons***

Written comments and logistical inquiries should be submitted to [CDIRegulations@insurance.ca.gov](mailto:CDIRegulations@insurance.ca.gov).

All substantive questions regarding these public discussions should be directed to Lisbeth Landsman-Smith, using the contact information below.

#### **Written Comments and Logistical Inquiries**

Kathryn Taras, Analyst  
California Department of Insurance  
300 Capitol Mall, 16th Floor  
Sacramento, CA 95814  
Phone: (916) 492-3675  
Email: [CDIRegulations@insurance.ca.gov](mailto:CDIRegulations@insurance.ca.gov)

#### **Substantive Inquiries**

Lisbeth Landsman-Smith  
Senior Staff Counsel  
California Department of Insurance  
300 Capitol Mall, 16th Floor  
Sacramento, CA 95814  
Phone: (916) 492-3561  
Email: [Lisbeth.Landsman@insurance.ca.gov](mailto:Lisbeth.Landsman@insurance.ca.gov)





December 4, 2020

SENT VIA EMAIL

Hunsaker & Associates Irvine, Inc.  
Att: Richard Fitch, Jr.  
3 Hughes  
Irvine, CA 92618

**SUBJECT: COMPLETE LETTER  
VESTING TENTATIVE TRACT MAP & ENVIRONMENTAL ASSESSMENT  
(CASE NO. PLTM2018-0001)**

Dear Mr. Fitch,

Thank you for submitting additional information for the application listed above for the property located at 6001 Palos Verdes Drive South. Pursuant to State Law, staff has completed the review of your application within the prescribed 30-day period, and determined that the information submitted is generally complete to begin processing the application. Please note that the City may require further information to clarify, amplify, correct, or otherwise supplement existing and/or future data. If the City requires such additional information, it is strongly suggested that you supply the information in a timely manner to avoid any delay in the processing of the application.

Staff will be in communication with you with respect to the next step in the environmental review process of the proposed project. This will require the issuance of a Request for Proposals/Qualifications to solicit bids from qualified consulting firms in the analysis and preparation of the necessary environmental documentation.

If you should have any questions, or would like further assistance, please feel free to contact me at (310) 544-5234 or by email at [octavios@rpvca.gov](mailto:octavios@rpvca.gov).

Sincerely,

A handwritten signature in black ink, appearing to read "O. Silva".

Octavio Silva  
Deputy Director of Community Development

Cc: *Jim York, P.O. Box 2649, Palos Verdes Peninsula, CA 90274*  
*Ken Rukavina, PE, Director of Community Development*  
*Project File*

December 9, 2020

Via U.S. Mail and Email

Steve Dickson, Administrator  
Federal Aviation Administration  
U.S. Department of Transportation  
800 Independence Ave, SW  
Washington D.C., 20591

**SUBJECT: Passenger Jet Overflights Over the City of Rancho Palos Verdes**

Dear Mr. Dickson,

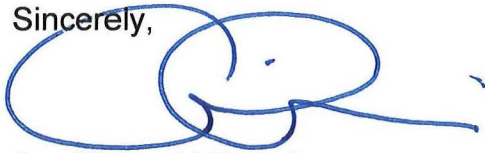
I am writing you on behalf of the residents and City Council of the City of Rancho Palos Verdes located in Los Angeles County on the Palos Verdes Peninsula (Peninsula). The City has had a long history of expressing concerns to the FAA regarding noise impacts associated with departing passenger aircraft from Los Angeles International Airport (LAX). The City is an active participant on the LAX Roundtable, and has made repeated written requests to the FAA, since the implementation of the Southern California Metroplex in March 2017, to mutually resolve passenger jet aircrafts being vectored by FAA air traffic controllers over the Peninsula, particularly Rancho Palos Verdes.

For most of 2020, there has been little to complain about regarding passenger flights over the Peninsula. It is safe to say that is primarily because of reduced travel due to the COVID-19 health pandemic. However, Rancho Palos Verdes residents and the Los Angeles World Airports' staff have recently recorded an escalation of passenger jet aircraft encroaching into the City's airspace.

The City urges your air traffic controllers to responsibly and diligently adhere to the published flight path that is over-the-ocean. Specifically, the City has requested and continues to request that FAA air traffic controllers either adhere to the published offshore flight path (OSHNN8) for LAX departures or to vector passenger jets beginning east of the Holtz waypoint.

I thank you in advance for accepting this letter and respectfully heeding to the City's request. I look forward to a timely written response, and can be reached at 310-544-5202 or via email at [aram@rpvca.gov](mailto:aram@rpvca.gov).

Sincerely,



Ara Michael Mhuranian, AICP  
City Manager

Enclosures:

- May 23, 2018 Letter from the LAX Community Noise Roundtable to the FAA
- January 8, 2020 Letter from the LAX Community Noise Roundtable to the FAA

CC:

Dr. Raquel Girvin, Western-Pacific Regional Administrator,  
Federal Aviation Administration Western-Pacific Region  
777 S. Aviation Blvd., Suite 150  
El Segundo, CA 90245

Frank Lias  
Air Traffic Manager  
Southern California Terminal Radar Approach Control Facilities  
9175 Kearny Villa Road  
San Diego, CA 92126

Lisa Jones  
Air Traffic Manager  
Los Angeles Air Route Traffic Control Center  
2555 East Avenue P  
Palmdale, CA 93550

Rancho Palos Verdes City Council  
William Wynder, City Attorney  
June Ailin, Assistant City Attorney



May 23, 2018

Daniel K. Elwell  
Acting Administrator  
Federal Aviation Administration  
800 Independence Ave, S.W.  
Washington, DC 20591

Dear Mr. Elwell:

The FAA recently began to engage with the LAX Community Roundtable in discussions about noise impacts from the North Arrival procedures into LAX in the new SoCal Metroplex. When the Roundtable first began communicating with the FAA about the new noise problems resulting from the Metroplex, we explained that we were addressing North Arrivals altitudes over the City of Los Angeles first (especially waypoint DAHJR), but that this was not the only issue prompting numerous complaints from area residents and communities.

We are writing now to bring a second Metroplex related problem to your attention and to request that the FAA please work with us to resolve it.

There has been a significant uptick in noise complaints about a dramatic increase in jet overflights across the Palos Verdes Peninsula from LAX departures. The Palos Verdes Peninsula is South of LAX. Problems from overflights were mitigated many years ago. The new Metroplex procedures were not supposed to increase overflights. In fact, they were promised to decrease overflights.

Unfortunately, as with the problem of North Arrival flights not meeting the assigned altitude restriction at DAHJR, the new SID procedures that were to direct flights around Palos Verdes Peninsula have not been followed in a large number of cases. Overflights have dramatically increased contrary to promises and published procedures. It looks to us like there might be some common problems of implementation at the local level, maybe with ATC or in the Standard Operating Procedures that perhaps were revised to implement the Metroplex.

In order to address noise impacts associated with turboprop and jet aircraft flying above the Palos Verdes Peninsula, on March 14, 2018, the LAX Community Noise Roundtable voted unanimously to transmit three specific requests to the FAA:

**1. Air traffic controllers to adhere to the OSHNN8 published procedure.**

The Southern California Metroplex was not supposed to alter the long-standing mitigation that has jets departing LAX southbound fly around the Palos Verdes Peninsula, rather than fly over the Peninsula, between 9PM and 7AM. The new SID OSHNN8 was not supposed to change this noise abatement procedure.

Noise studies conducted by the FAA prior to Metroplex implementation predicted there would be a reduction in noise on the Palos Verdes Peninsula under the new SID OSHNN8 procedure.

According to the Los Angeles World Airports (LAWA) statistics, Peninsula jet overflights averaged less than 200 per month prior to Metroplex implementation. Unfortunately, after Metroplex implementation, Peninsula jet overflights have more than doubled to 455 Peninsula overflights per month. This is affecting four cities on the Peninsula in addition to the City of Los Angeles San Pedro. Therefore, the Roundtable requests that air traffic controllers adhere to the OSHNN8 published procedure as presented during the Southern California Metroplex public hearings and Environmental Noise Assessment studies.

**2. When necessary for spacing, air traffic controllers vector jets from the OSHNN8 procedure beginning east of the HOLTZ WAYPOINT.**

The Roundtable understands that air traffic controllers sometimes need to vector jets from published procedures for safety. However, the Roundtable has been presented with evidence from a City of Rancho Palos Verdes citizen and the Roundtable representative for Rancho Palos Verdes that suggests some or much of the vectoring is not necessitated by safety concerns or traffic congestion. Recordings of air traffic controller communications with pilots and recordings of flight radar video show a frequent lack of surrounding aircraft when jets were vectored. This makes us wonder whether air traffic controllers are vectoring based on convenience.

The Roundtable notes that SCT standard operating procedure 8-3-2.a delineates distance and altitude policies when vectoring near or over the Peninsula. Therefore, the Roundtable requests when that, when necessary for legitimate spacing, air traffic controllers vector jets from the OSHNN8 procedure beginning east of the HOLTZ WAYPOINT. This will allow jets to overfly the ocean instead of the Peninsula and follow the OSHNN8 noise abatement procedure more closely.

**3. Air traffic controllers raise the 5,000-foot altitude restriction on Mokulele Airlines' Cessna Caravan turbo propellers overflying the Palos Verdes Peninsula.**

On July 12, 2017, LAWA staff noted that air traffic controllers were limiting Mokulele Cessna Caravan turbo propellers from overflying the Peninsula higher than 5,000 feet. The effect of the altitude restriction is lowering the oldest, loudest aircraft closest to Peninsula residents, which is exacerbated by early morning freight deliveries.

The Roundtable is not requesting a redesign of the Class Bravo airspace similar to RT letters written to the FAA in February 2004 and September 2012. Instead, the Roundtable notes a range of altitude between 5,000 feet to 9,000 feet which other turbo propellers overfly the Peninsula.

Even raising the altitude 1000-2000 feet for the Mokulele turbo propellers would help reduce the noise impact on Peninsula residents; therefore, the Roundtable requests that air traffic



controllers raise the 5,000-foot altitude restriction on Mokulele Airlines' Cessna Caravan turbo propellers overflying the Palos Verdes Peninsula.

Please give these requests serious consideration as the noise impacts affecting these communities have drastically increased and diminished the quality of life for many on the Palos Verdes Peninsula and the City of Los Angeles San Pedro. Thank you for your continued cooperation with the Roundtable.

Sincerely,



Denny Schneider  
Chair, LAX Community Noise Roundtable



Geoff Thompson  
Ad Hoc Committee Chair

Copy:

Tamara Swann, Western-Pacific Region Deputy Regional

Ad Hoc Committee Recommendations for key FAA Air Traffic Control Managers and Air Traffic Controllers from San Diego and Palmdale and key political stakeholders



January 8, 2020

Lisa Jones  
Air Traffic Manager  
Los Angeles Air Route Traffic Control Center  
2555 East Avenue P  
Palmdale, CA 93550

Frank Lias  
Air Traffic Manager  
Southern California Terminal Radar Approach Control Facilities  
9175 Kearny Villa Road  
San Diego, CA 92126

**Subject: Request for Letter of Agreement Establishing Standard Procedures for Coordination of Air Traffic between Los Angeles Center (ZLA-ARTCC) and Southern California TRACON (SCT)**

Dear Ms. Jones and Mr. Lias,

In an effort to reduce aircraft noise, Southern California TRACON (SCT) standard operating procedure (SOP) Section 3 (8-3-2.a) states the following: "Turbojet departures filed via southbound SIDs must be established on the SID or vectored to remain at least five (5) statute miles (SM) west and three (3) SM south of Palos Verdes Peninsula until leaving 13,000' MSL" (see Exhibit 1).

Because Los Angeles Air Route Traffic Control Center (ZLA-ARTCC) is not a party to this noise abatement SOP, the LAX/ Community Noise Roundtable respectfully requests that SCT SOP Section 3 (8-3-2.a) be included in the letter of agreement (LOA) between ZLA-ARTCC and SCT (see Exhibit 2).

The Roundtable considers this LOA to be a feasible measure to reduce aircraft flights over the Palos Verdes Peninsula after hand-off between SCT and ZLA-ARTCC, resulting in more consistent use of the established noise abatement procedure. Please give this request serious consideration and kindly provide a response to the Roundtable. Thank you for your continued cooperation.

Sincerely,

Denny Schneider  
Chair, LAX/Community Noise Roundtable

- Exhibits: 1. SCT SOP Section 3 (8-3-2.)  
2. LOA between ZLA-ARTCC and TRACON SCT

03/29/18

SCT 7110.65B

### SECTION 3. RADAR TEAM PROCEDURES

#### 8-3-1. AUTOMATIC ACQUISITION OF DEPARTURE TRACKS AND DEPARTURE MESSAGES

Del Rey CPCs are responsible for determining if automatic acquisition of departure tracks has occurred for departures that enter or are under their respective sector's jurisdiction, and must forward departure times to the appropriate facility when automatic acquisition of a departure does not occur.

#### 8-3-2. DEPARTURE NOISE ABATEMENT PROCEDURES: RUNWAYS 24R/L AND 25L/R

Noise abatement procedures apply to turbojet and turboprop aircraft that depart Los Angeles airport runways 24 and 25. Noise abatement procedures also apply to southbound turbojet departures from Santa Monica, Torrance, and Hawthorne airports. Departure controllers must use the following procedures unless operational requirements dictate taking action to correct an adverse or unsafe situation:

- a. Turbojet departures filed via southbound SIDs must be established on the SID or vectored to remain at least five (5) statute miles (SM) west and three (3) SM south of the Palos Verdes Peninsula until leaving 13,000' MSL.
- b. Turbojet departures routed over GMN VORTAC/OROSZ or PMD VORTAC/SLAPP must not be vectored north of 270 degrees until reaching 4,000' MSL; and must be established on the SID or vectored west of BAYST Intersection.
- c. Turbojet departures must not be vectored south of 210 degrees until reaching 3,000' MSL.
- d. Turbojet ORCKA Departures must be direct KLIPR.
- e. LAX Turboprop departures must not be vectored south of 200 degrees until reaching 3,000' MSL.
- f. LAX Turboprop departures landing CRQ, SNA, or SAN must be vectored outside the noise dots to remain at least one (1) SM off of the Palos Verdes Peninsula shoreline.

#### 8-3-3. MANDATORY SPEED RESTRICTIONS

- a. Between 0630 and 2200 local time, departure controllers must, unless otherwise coordinated, assign 250 knots to all turbojet aircraft assigned 10,000' MSL or above that will enter the Newport Sector at any point on their route of flight.
- b. All RECAT A, B, and C category aircraft will be instructed not to exceed 280 knots to the extent possible.

## Exhibit 2

### 1. PURPOSE:

This letter of agreement establishes standard procedures for coordination of air traffic between Los Angeles Center (ZLA) and the Southern California TRACON (SCT).

### 2. CANCELLATION:

All previous agreements are cancelled.

### 3. SCOPE:

The provision and procedures contained herein are supplemental to those contained in FAA Order 7110.65 and VATSIM/VATUSA policies/procedures.

### 4. PROCEDURES:

1. Radar separation
  - a. The minimum radar separation required by each facility is 5 miles. The transferring controller must ensure that this separation is maintained or increasing at the time of transfer of control.
2. Airspace/Airport Configurations
  - a. Airspace delegated to SCT changes based on the landing configuration at LAX. ZLA must ensure all aircraft are assigned appropriate procedures based on the runway flow in use at SCT airports.
3. Arrivals
  - a. SCT shall have control for all aircraft landing in SCT passing 16,000' MSL. Feeder sector shall have control for descent to 17,000' MSL, speeds no lower than 250 knots, and turns within 10 miles of its eastern boundary from ZLA.
  - b. Aircraft arriving SCT from ZLA will be handled in accordance with the following tables:
    - i. Burbank Area

SECTOR	ROUTE/STAR	INSTRUCTION	NOTES
MOORPARK	WEESL/LHS.LYNXX	Cross LYNXX at 9000'	
	BONJO/ROKKR/IVINS	Descend via	
	FERN	Cross PIRUE/BAILL at 11000' or CANYN at 9000'	
VALLEY	LHS.KIMMO/WAYVE	Cross LHS at 11000'	Landing LAX/SMO

## Exhibit 2

### ii. Los Angeles Area - LAX West Traffic

SECTOR	ROUTE/STAR	INSTRUCTION	NOTES
FEEDER	SNSTT	Descend via	Assigned 280 knots or less
	ANJLL	Descend via	
	HLYWD	Descend via	
	SEAVU	Descend via	
ZUMA	VTU.SADDE	Cross VTU at 11000' and 250 knots	
	HUULL/RYDRR	Descend via	
	FIM.SADDE	Cross SYMON at 12000' and 250 knots	
	IRNMN	Descend via	

### iii. Los Angeles Area - LAX East Traffic

SECTOR	ROUTE/STAR	INSTRUCTION	NOTES
FEEDER	BIGBR	Descend via	ZLA assigns 7R transition, assigned 280 knots or less
	BRUEN	Descend via	
	BASET	Descend via	
STADIUM	ZUUMA	Descend via	
	MOORPARK	Cross PAULA at 11000' and 250 knots	
	V25.LAX	Level at 5000'	MPQ aircraft landing LAX
	EXERT	Cross EXERT at 6000', 250 knots	Established on runway 6L localizer



## Exhibit 2

### iv. Los Angeles Area - LAX Over Ocean Traffic

SECTOR	ROUTE/STAR	INSTRUCTION	NOTES
STADIUM	MOORPARK	Cross PAULA at 11000', 250 knots	
	ZUUMA	Descend via	
	V25	Level at 5000'	MPQ aircraft landing LAX
	EXERT direct LAX	Cross Exert at 6000', 250 knots	
FEEDER	MDNYT	Descend via	Assigned 280 knots or less
	BASET	Descend via	Assigned 280 knots or less, assigned 6R transition

### v. Empire Area

SECTOR	ROUTE/STAR	INSTRUCTION	NOTES
NORTON	THRNE	Descend via	
	ZIGGY	Cross FLAVR at 14000' or DAWNA at 12000'	
	GLRNO	Descend via	
	SCBBY	Descend via	
	SETER	Cross PSP at 16000' or ROTHY at 12000'	
	DSNEE/ROOBY	Descend via	
	KAYOH	Cross AHLEX at 16000' or DAWNA at 13000'	
	V137.PSP	Cross HITOP at 16000'	Landing Palmplex
	SIZLR	Descend via	
SPRINGS	CLOWD/SBONO	Cross CLOWD at 11000' and 250 knots	

# Exhibit 2

## vi. Coast Area

SECTOR	ROUTE/STAR	INSTRUCTION	NOTES
PACIFIC	OLAAA	Descend via	
	VISTA	Cross OCN at 12000'	
	PLYYA	Descend via	SAN East

## vii. San Diego Area - SAN West Traffic

SECTOR	ROUTE/STAR	INSTRUCTION	NOTES
NORTH	HUBRD	Cross CARDI at 15000'	
	COMIX	Descend via	
EAST	LUCKI	Descend via	
	BARET	Cross CARUL at 12000' or PILLO at 10000'	

## viii. San Diego Area - San East or Opposite Direction Traffic

SECTOR	ROUTE/STAR	INSTRUCTION	NOTES
WIZKY	SHAMU	Cross SHAMU at 15000'	
EAST	TOPGN	Descend via	
	BARET	Cross CARUL at 12000' or PILLO at 10000'	

## ix. Del Rey Area

SECTOR	ROUTE/STAR	INSTRUCTION	NOTES
NEWPORT	TANDY	Cross MERMA at 14000'	
	OHSEA/PCIFC	Descend via	
	C1177.SXC	Cross GOATZ at 12000', 250 knots	
	GOATZ/KARLB	Descend via	
	BAUBB/TILLT	Descend via	

## Exhibit 2

### 4. Departures

- a. Departures from SCT airports with cruise altitudes above SCT's airspace ceiling shall be climbing via SID at the time of handoff. Aircraft not on SIDs or on a SID with a top altitude below SCT's airspace ceiling should be climbing to SCT's airspace ceiling.
  - i. One exception to this is aircraft routed via legacy departure procedures over SLI (e.g. SEBBY, LAXX, MUSEL). Aircraft routed over SLI climbing out of SCT shall be climbed to 17,000' at the time of handoff to ZLA.
  - ii. The other exception is M-class aircraft routed via VTU or IKAYE from Del Rey. See the table below.
- b. Departures from SCT airports with cruise altitudes at or below SCT's airspace ceiling shall be at their cruise altitude at the time of handoff, unless otherwise coordinated with ZLA.
- c. ZLA in general does not have control for aircraft climbing out of SCT while still in SCT airspace, exceptions are listed in the notes column of the following table.
- d. Aircraft on Standard Instrument Departures should be handed off to the appropriate ZLA sector as listed in this table:

GATE/DEPARTURE	ZLA SECTOR	NOTES
Departures routed over OROSZ/GMN	04	
GARDY/SNSHN departures	04	ZLA has control
NIKKL/RAJEE	30	ZLA control for vectors southbound reaching 12000'
CATHEDRAL	39	ZLA has control
IRVINE	30	
MIKAA	30	
SNA Eastbound Departures	30	ZLA control for vectors reaching 8000'
ECHHO/MMOTO/FALCC	30	
ZZOOO/SAYOW/BRDR	31	
PADRZ/PEBLE	30	
PRCH/VTU	25	HDG 250. ZLA control for vectors west of FIM148R
DARRK/SUMMR/MUELR	25	
MOOOS	25	Center control turns clockwise from 250 to 300 west of FIM158R, climbing to 9000'
ORCKA	04	
TOPMM	04	Assigned 250 knots

# Exhibit 2

South Ventura Flow	25	HDG 250. ZLA control for climb and turns westbound west of FIM148R
TOPMM IKAYE transition	25	ZLA control for climb
VTU/PRCH/TRTON <b>LAX E</b>	25	HDG 260 or DRCT TRTON
DOTSS/FRITR	30	
PNDAH	30	
OSHNN	30	
ZOOMM	30	
LAXX	30	
FINZZ/HOBOW	30	
TUSTI/LAXX <b>LAX E</b>	30	
HHERO	28	
SXC-C1177	28	Direct SXC. ZLA control for climb and turns west of FIM148R
ZILLI	28	ZLA control for climb and turns west of FIM148R



## FOLLOW-UP AGENDA

RANCHO PALOS VERDES PLANNING COMMISSION  
TUESDAY, DECEMBER 8, 2020  
FRED HESSE COMMUNITY PARK, 29301 HAWTHORNE BOULEVARD  
REGULAR MEETING  
7:00 P.M.

---

NEXT P.C. RESOLUTION NO. 2020-19

---

CALL TO ORDER: **7:00 P.M.**

PUBLIC PARTICIPATION OPTIONS: **DEPUTY DIRECTOR SILVA PROVIDED AN OVERVIEW OF PUBLIC PARTICIPATION OPTIONS.**

PLEDGE OF ALLEGIANCE: **LED BY COMMISSIONER SAADATNEJADI**

ROLL CALL: **ALL PRESENT**

APPROVAL OF AGENDA: **APPROVED AS PRESENTED**

COMMUNICATIONS:

City Council Items: **DEPUTY DIRECTOR SILVA PROVIDED AN UPDATE OF THE DECEMBER 1, 2020 CITY COUNCIL MEETING, WHICH INCLUDED A REORGANIZATION OF THE CITY COUNCIL AND A CONTINUANCE OF THE DRAFT ACCESSORY DWELLING UNIT ORDINANCE.**

Staff: **DEPUTY DIRECTOR SILVA NOTED THAT LATE CORRESPONDENCE WAS RECEIVED BY THE PLANNING COMMISSION FOR ITEM #4**

Commission: **NONE**



COMMENTS FROM THE AUDIENCE (regarding non-agenda items):

MAYOR PRO TEM DAVID BRADLEY GREETED THE PLANNING COMMISSION, THANKED THEM FOR THEIR SERVICE AND WISHED EVERYONE A HAPPY HOLIDAY SEASON.

JEREMY VANDERHAL SPOKE REGARDING THE PROCESS AND COST TO INITIATE A CODE INTERPRETATION BY THE PLANNING COMMISSION.

CONSENT CALENDAR:

1. APPROVAL OF THE NOVEMBER 24, 2020 P.C. MINUTES

**ACTION:** APPROVED AS PRESENTED

CONTINUED PUBLIC HEARINGS:

2. SITE PLAN REVIEW, MAJOR GRADING PERMIT, HEIGHT VARIATION, AND NEIGHBORHOOD COMPATIBILITY: (CASE NO. PLHV2019-0009): 2958 Crownview Drive (AB)

Request: Construction of a new 8,383 ft<sup>2</sup> two-story residence with an attached 708 ft<sup>2</sup> three-car garage with 1,390 yd<sup>3</sup> of total grading and ancillary site improvements.

**ACTION:** 1) RECEIVED AND FILED A STATUS REPORT ON THE PROJECT; 2) PROVIDED THE APPLICANT WITH AN OPPORTUNITY TO CONSIDER PROJECT REVISIONS; AND 3) CONTINUED THE ITEM TO A MEETING DATE UNCERTAIN. MOTION PASSED ON A VOTE OF 7 TO 0.

CONTINUED BUSINESS: NONE

NEW PUBLIC HEARINGS:

3. VIEW RESTORATION PERMIT APPLICATION- (CASE NO. PLVR2019-0017): Applicants Bob Daly, property owner at 6844 Vallon Drive; Abbas Saadat, property owner at 6854 Vallon Drive; Chris Klodnicki, property owner at 6862 Vallon Drive. Foliage Owner Asghar Ghassemy, property owner at 30739 Via La Cresta (RN).

Request- A request to restore the view from the viewing areas located at 6844, 6854 and 6862 Vallon Drive.

**ACTION:** ADOPTED P.C. RESOLUTION 2020-19, CONDITIONALLY APPROVING A VIEW RESTORATION PERMIT (CASE NO. PLVR 2019-0017), REQUIRING THE FOLIAGE OWNER TO CROWN REDUCE, WITH THE OPTION TO REMOVE AND REPLACE, FOUR MONTEREY PINE TREES AND TO CROWN REDUCE THE BOUGAINVILLEA TREES, PITTOSPORUM TREES, BOTTLEBRUSH TREES, AND BRAZILIAN PEPPER

TREES AT 30739 VIA LA CRESTA AS DESCRIBED IN CONDITION OF APPROVAL NOS. 3 THRU 4 AND AS ILLUSTRATED IN ATTACHMENT NO. 4, IN ORDER TO RESTORE THE APPLICANTS' VIEWS. MOTION PASSED ON A VOTE OF 4 TO 0 WITH COMMISSIONERS CHURA, HAMILL AND SAADATNEJAD RECUSING.

4. SITE PLAN REVIEW AND HEIGHT VARIATION- (CASE NO. PLHV2019-0008):  
10 Toprail Lane (MG)

Request- A request to demolish an existing 3,051 ft<sup>2</sup> two-story residence to accommodate the construction of a new 5,256 ft<sup>2</sup> (garage included) two-story residence and ancillary site improvements as well as to conduct 380 yd<sup>3</sup> of associated on-site grading.

**ACTION:** ADOPTED P.C. RESOLUTION NO. 2020-20, APPROVING WITH CONDITIONS, A HEIGHT VARIATION, MAJOR GRADING PERMIT AND SITE PLAN REVIEW TO DEMOLISH AN EXISTING 3,051 FT<sup>2</sup> TWO-STORY RESIDENCE TO ACCOMMODATE THE CONSTRUCTION OF A NEW 5,256 FT<sup>2</sup> (GARAGE INCLUDED) TWO-STORY RESIDENCE AND ANCILLARY SITE IMPROVEMENTS AS WELL AS TO CONDUCT 380 YD<sup>3</sup> OF ASSOCIATED ON-SITE GRADING. MOTION PASSED ON A VOTE OF 6 TO 1 WITH COMMISSIONER JAMES DISSENTING.

NEW BUSINESS: NONE

ITEMS TO BE PLACED ON FUTURE AGENDAS:

5. PRE-AGENDA FOR THE MEETING ON DECEMBER 22, 2020

**ACTION:** APPROVED AS PRESENTED WITH A REQUEST TO CANCEL THE MEETING FOR DECEMBER 22, 2020, FOR LACK OF AGENDA ITEMS.

6. PRE-AGENDA FOR THE MEETING ON JANUARY 12, 2021

**ACTION:** APPROVED AS PRESENTED

ADJOURNMENT: 9:13 P.M.