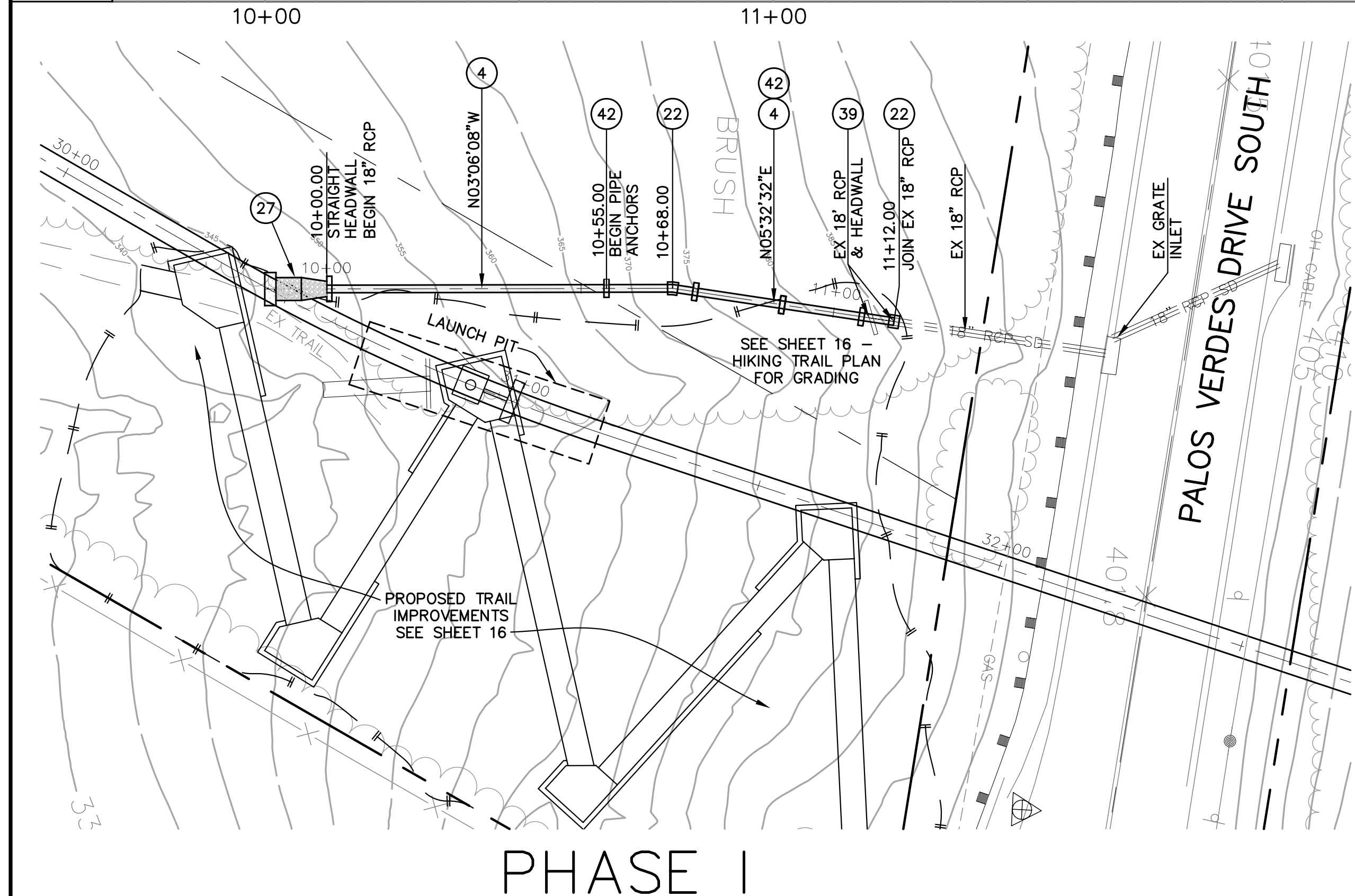




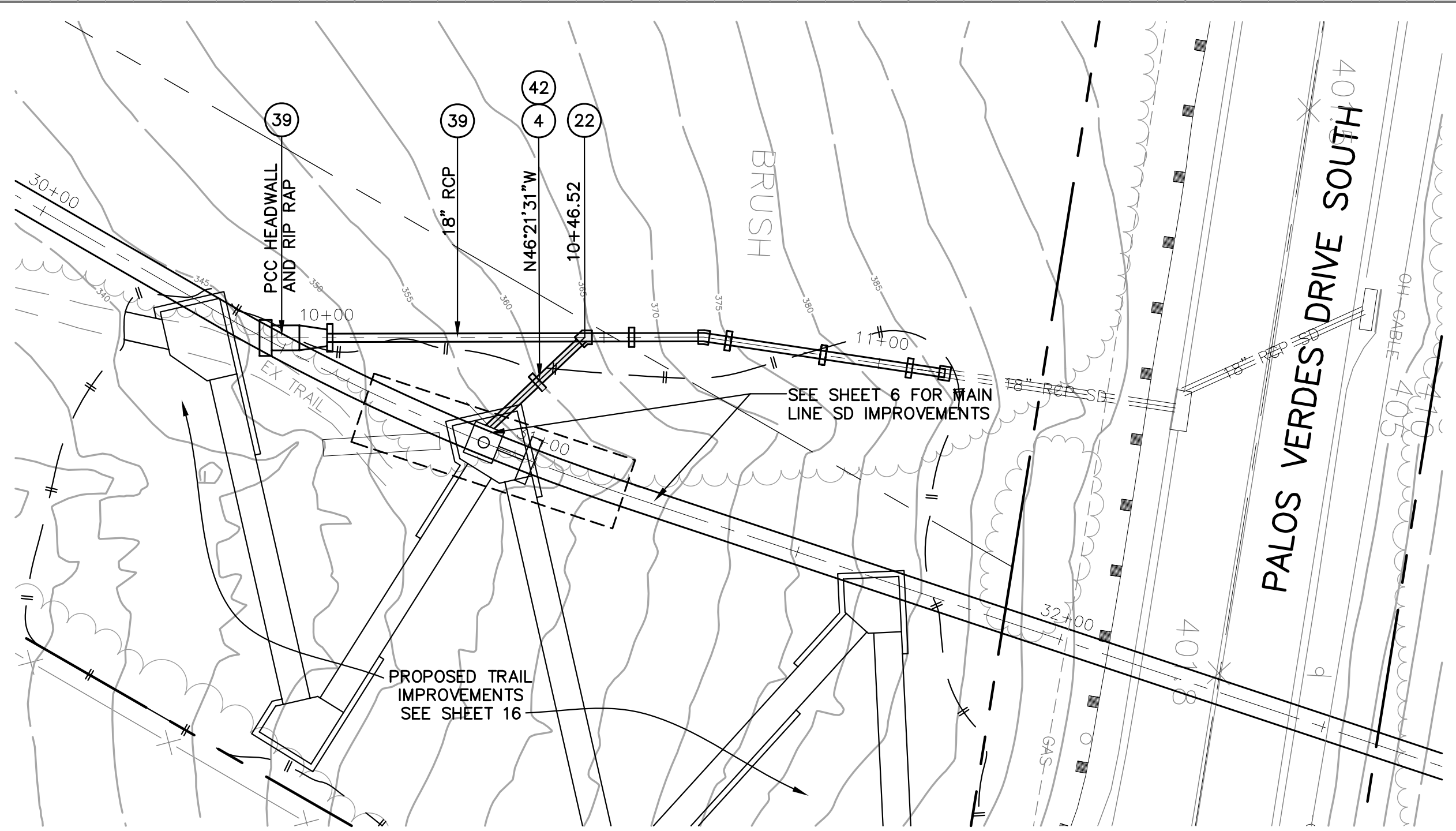
STILL TO ADD
PHASE II PROFILE

SCALE
HORIZ: 1"=20'
VERT: 1"=10'



PHASE I

PRIOR TO TUNNEL CONSTRUCTION COMMENCING

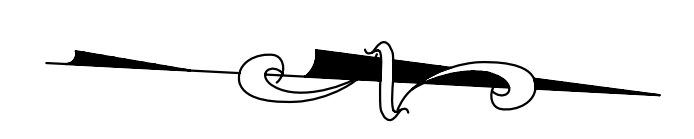
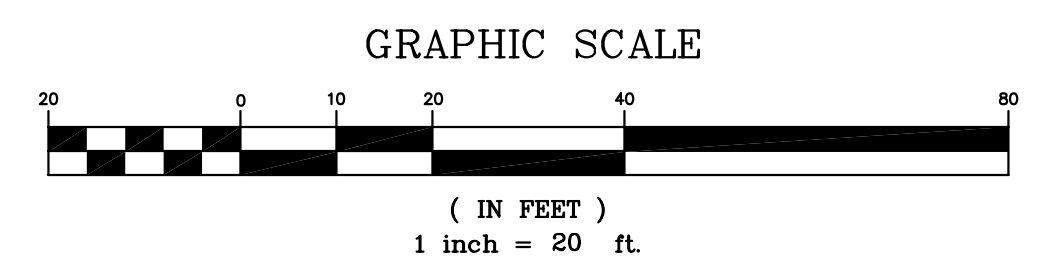


PHASE II

DURING CONSTRUCTION OF OPEN TRENCH MAIN LINE SD
ONCE TUNNEL CONSTRUCTION IS COMPLETED

- CONSTRUCTION NOTES**
- ④ CONSTRUCT 18" RCP (2500-D) WITH 1/2" EXTRA COVER OVER INVERT REINFORCING STEEL PER TYPICAL OPEN TRENCH SECTION ON SHEET 20.
 - ②② CONSTRUCT 18" DIAMETER REINFORCED CONCRETE COLLAR PER SPPWC STD PLAN NO. 380-3.
 - ②⑦ CONSTRUCT RIP RAP ROCK ENERGY DISSIPATOR PER DETAIL 27 ON SHEET 21.
 - ③⑨ REMOVE INTERFERING PORTIONS OF EXISTING STORM DRAIN.
 - ④② CONSTRUCT PIPE ANCHORS IN PERMANENT PORTION OF PIPE INSTALLED PER SPPWC STD PLAN NO. 221-1.

60% DESIGN PLANS
NOT FOR CONSTRUCTION
NOVEMBER 1, 2011



PLAN PREPARED BY:
Harris & Associates
34 Executive Park, Suite 150
Irvine, CA 92614 (949) 655-3900
RANDALL G. BERRY RCE #44642 DATE

CITY OF RANCHO PALOS VERDES
RON DRAGOO SENIOR ENGINEER DATE
RCE: 54924

NO.	DATE	DESCRIPTION	APPROVED
REVISIONS			

DESIGNED RGB/EGR/PL
DRAWN EGR/PL
CHECKED RGB
DATE OCT 11

CITY OF RANCHO PALOS VERDES



SAN RAMON STORM DRAIN
PLAN AND PROFILE
FVDS STORM DRAIN IMPROVEMENTS

SHEET 18 OF 31
SHT. 17
PRJ NO. XXXXX