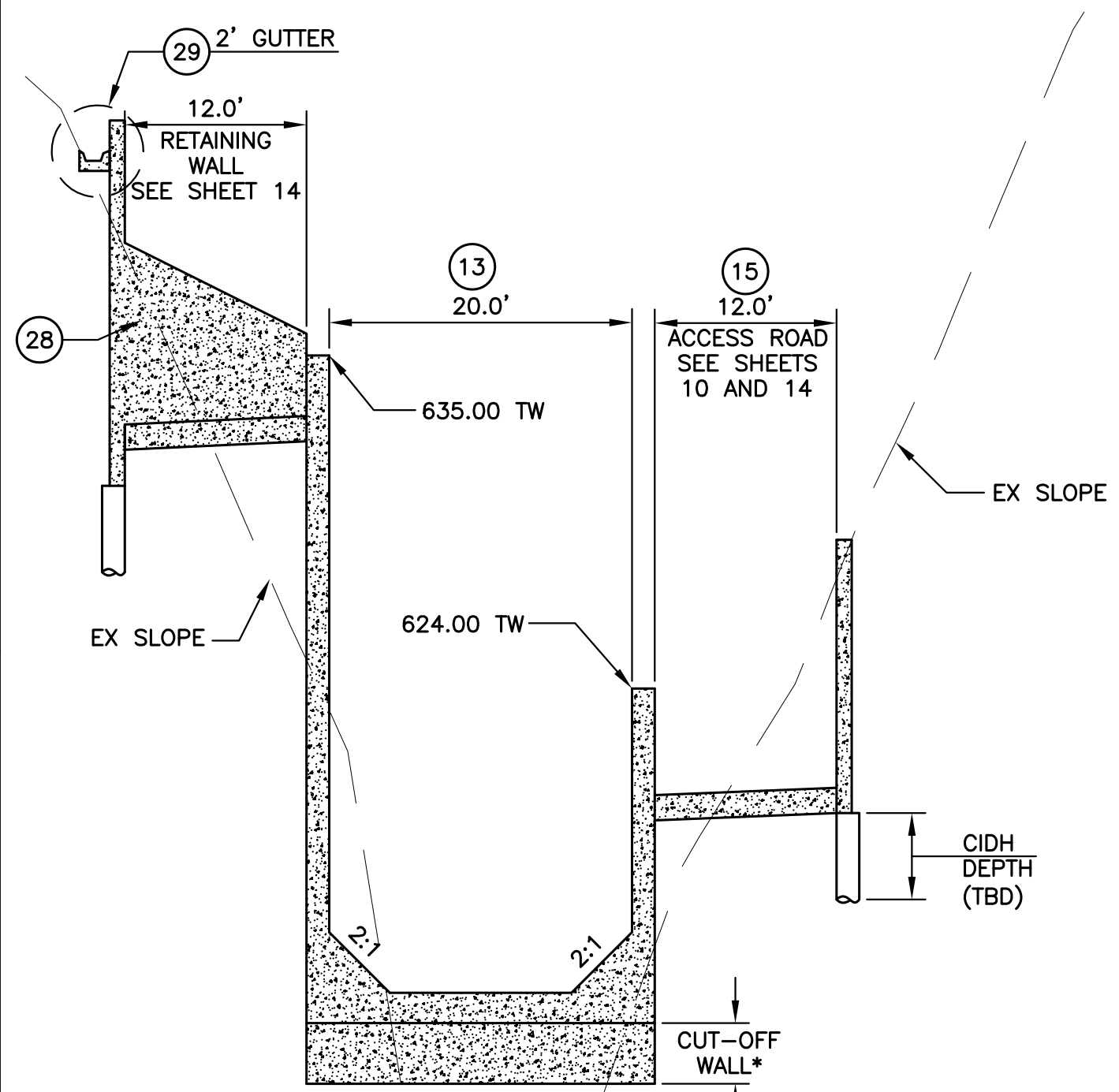
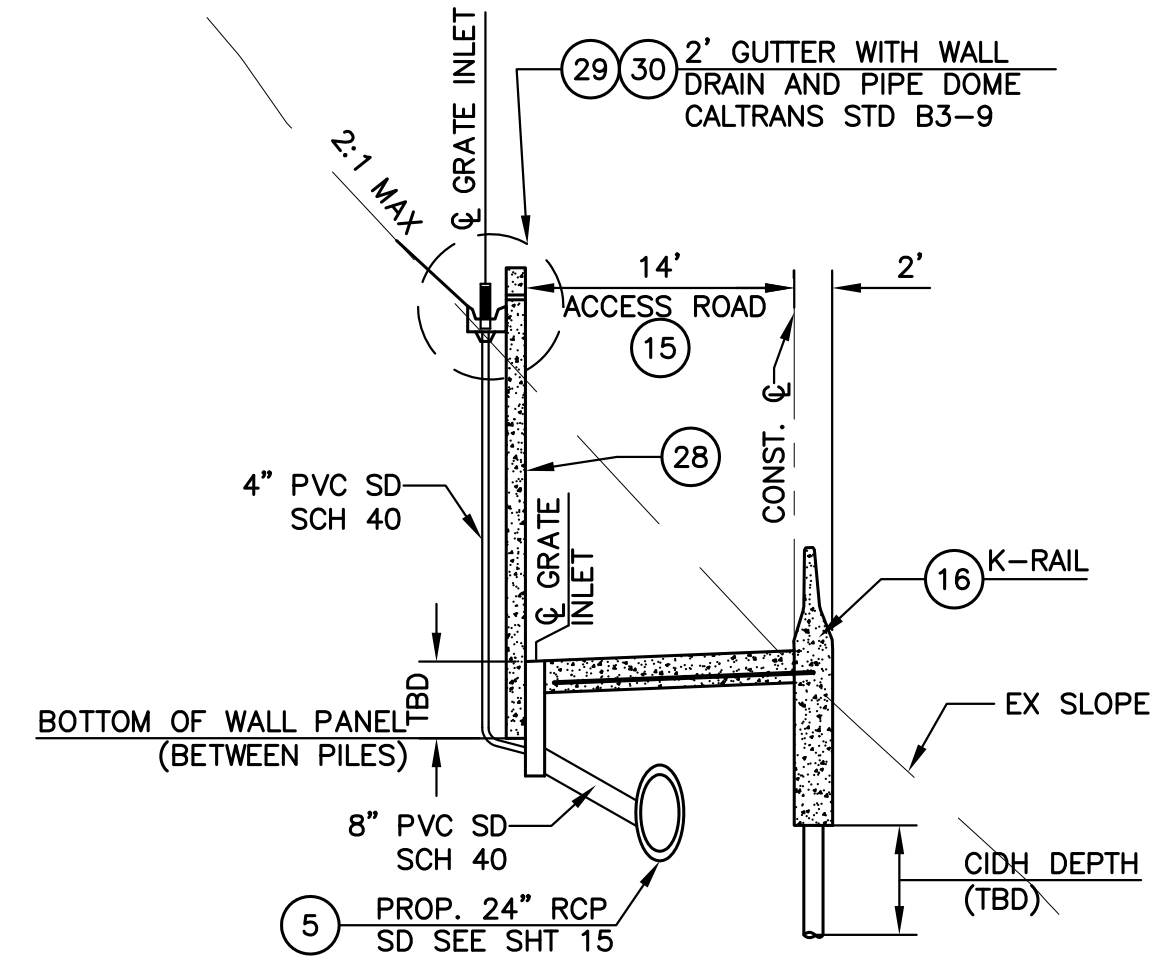


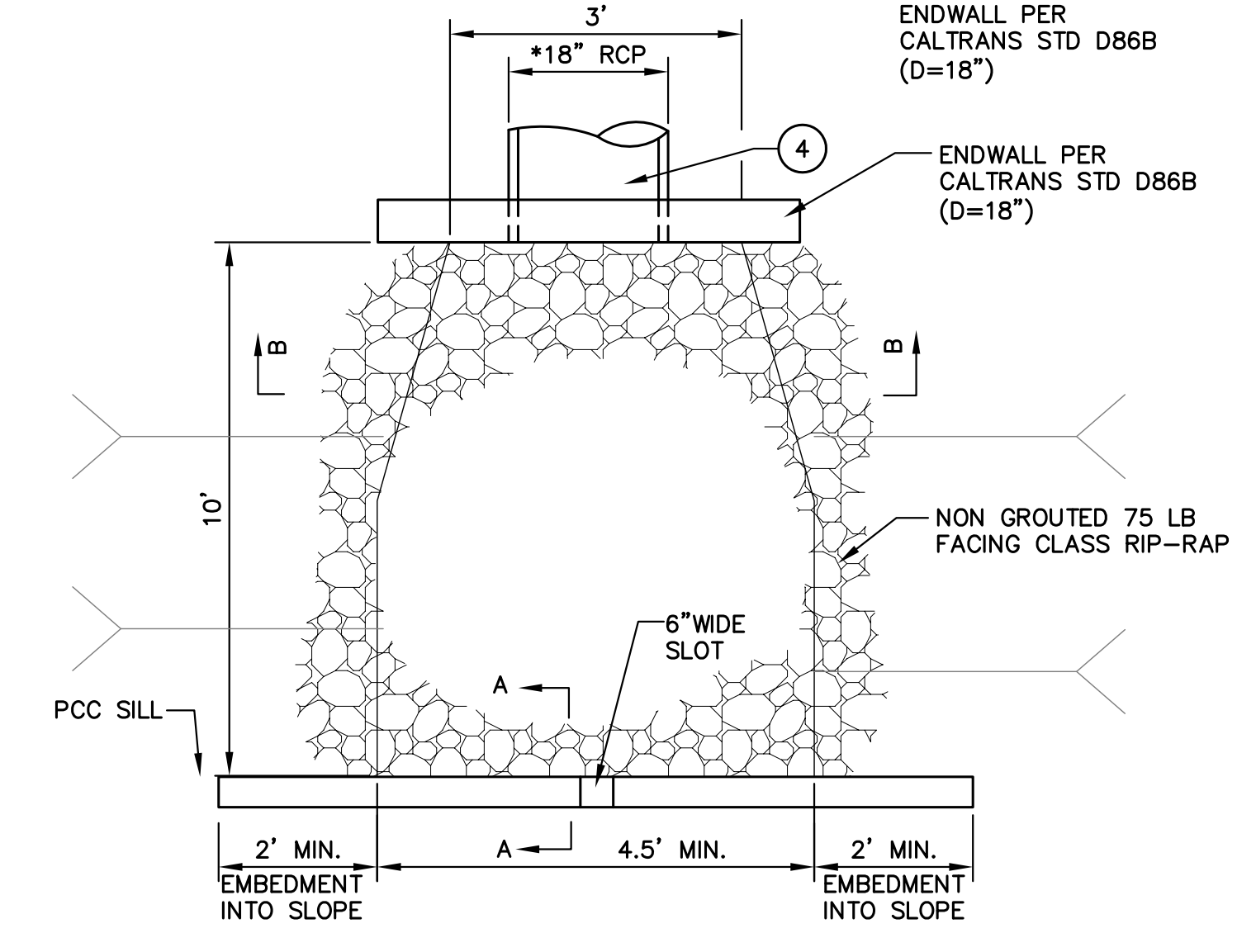
SECTION A
SCALE: 1"=10'



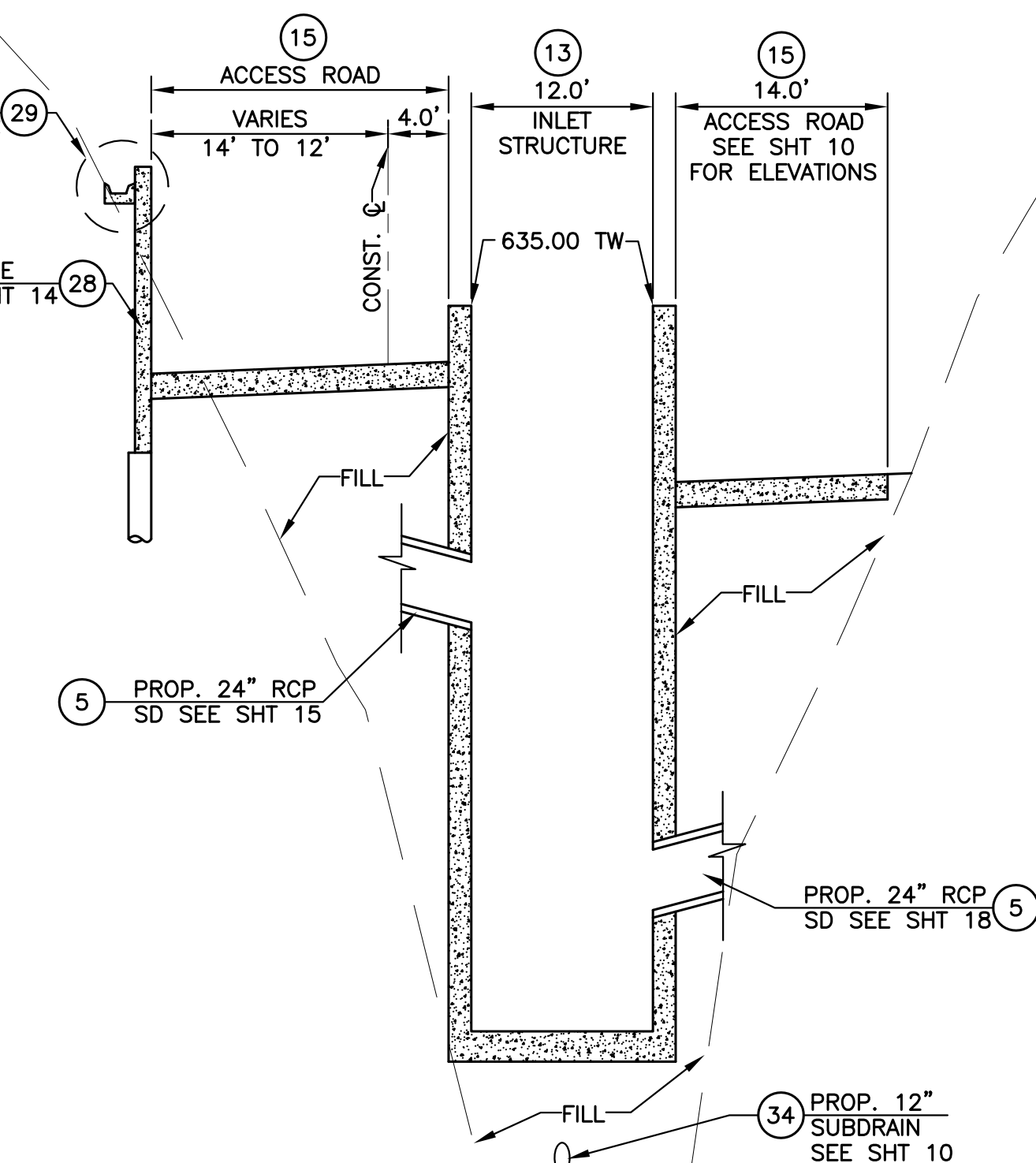
SECTION D
SCALE: 1"=10'



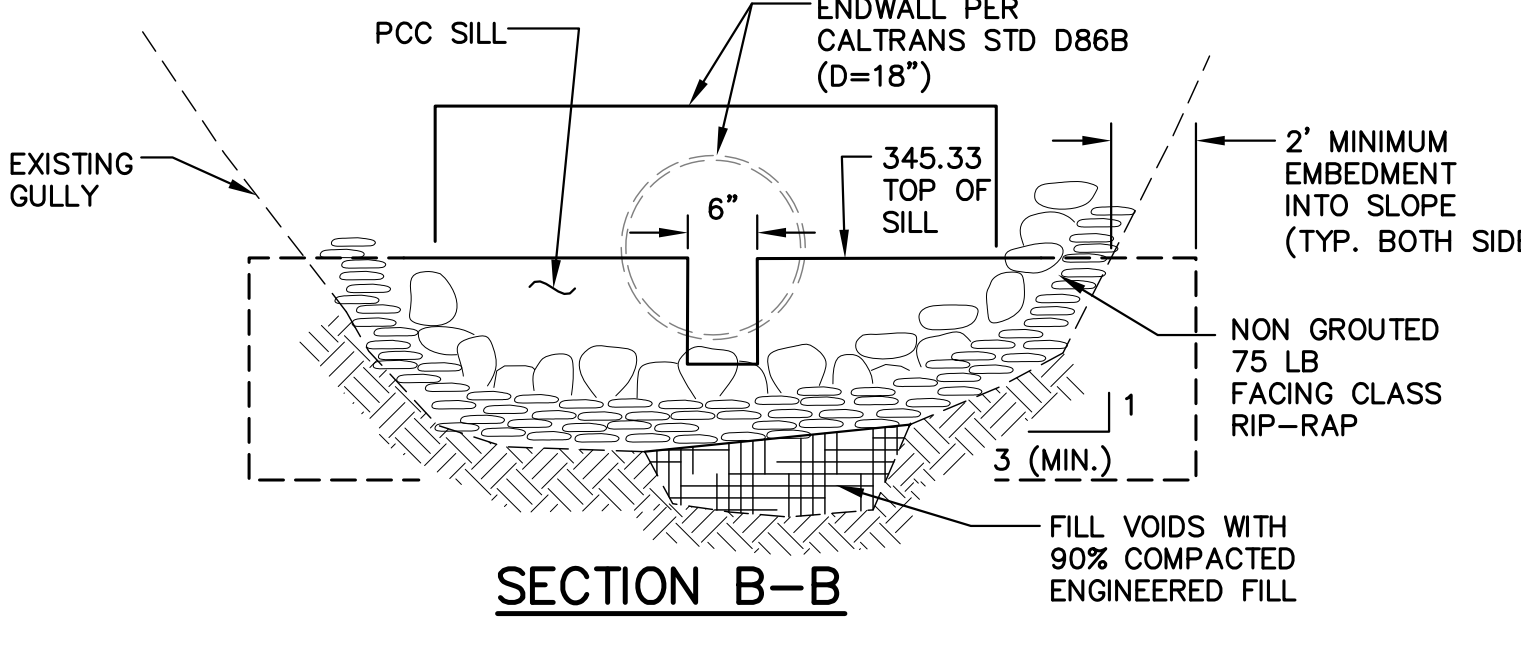
SECTION B
SCALE: 1"=10'



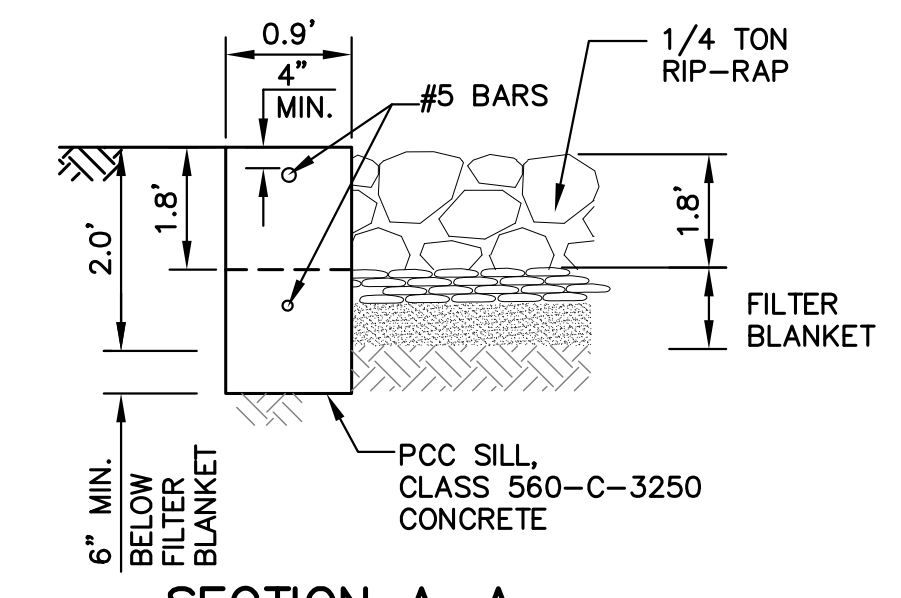
SECTION B-B



SECTION C
SCALE: 1"=10'



SECTION B-B



SECTION A-A

27 ENERGY DISSIPATOR DETAIL
NTS

16 CUSTOM K-RAIL WALL DETAIL
NTS

- CONSTRUCTION NOTES**
- 4 CONSTRUCT 18" RCP (2500-D) WITH 1/2" EXTRA COVER OVER INVERT REINFORCING STEEL PER TYPICAL OPEN TRENCH SECTION ON SHEET 20.
 - 5 CONSTRUCT 24" RCP (2500-D) WITH 1/2" EXTRA COVER OVER INVERT REINFORCING STEEL PER TYPICAL OPEN TRENCH SECTION ON SHEET 20.
 - 13 CONSTRUCT REINFORCED CONCRETE INLET STRUCTURE, HEADWALL, AND WARPED WINGWALLS PER MODIFIED CALTRANS STD PLAN D86B. MODIFIED PER DETAIL 13 ON SHEET XX. H=XX'+/-, DIA=54" I.D., SLOPE =2:1. (XX" INVERT SLAB, 6" DEEP 3' WIDE CUTOFF WALL). CONSTRUCT DRAINAGE WEEPHOLES AT 8' MAX SPACING ALONG WINGWALLS PER CALTRANS STD B0-3, DETAIL 3-1.
 - 14 CONSTRUCT TYPE A1 (12") EARTHEN TAN COLOR PCC CURB PER MODIFIED SPPWC STD 120-1. MODIFICATIONS: 12" BURIED DEPTH AND 8" TOP WIDTH.
 - 15 CONSTRUCT 10" THICK EARTHEN TAN COLOR PCC ACCESS ROAD, WITH #4 REBAR AT 12" ON CENTER EACH WAY PER PLAN. CONSTRUCT JOINTS AT 10' ON CENTER.
 - 16 CONSTRUCT MODIFIED REINFORCED CONCRETE K-RAIL BARRIER PER CALTRANS STD PLAN T3B AND PER DETAIL 16 ON SHEET X.
 - 27 CONSTRUCT RIP RAP ROCK ENERGY DISSIPATOR PER DETAIL 27 ON SHEET 21.
 - 28 CONSTRUCT CIDH SOLDIER PILE RETAINING WALL PER TYPICAL WALL SECTION X ON SHEET 21, PLAN, PROFILE, AND STRUCTURAL DETAIL 28 ON SHEET X.
 - 29 CONSTRUCT REINFORCED CONCRETE INTERCEPTOR DRAINAGE DITCH AT BACK OF WALL PER TYPICAL WALL SECTION X ON SHEET 21, PER CALTRANS STD PLAN B3-6 AND PER PROFILE.
 - 30 CONSTRUCT DRAINAGE DITCH STORM DRAIN SYSTEM PER DETAIL 30 ON SHEET 21 (SIZE OF PVC SD PER DETAIL). INSTALL 6" ATRIUM GRATE INLET (NDS PART NO. 80 OR APPROVED EQUAL).
 - 34 CONSTRUCT CANYON SUB-DRAIN WITH 12" DIAMETER PERFORATED PVC PIPE (SCH 40) IN FABRIC WRAPPED ROCK GALLEY PER XXX STD XXX AND PER CANYON FILL DETAIL AT DOWNSTREAM OF INLET ON SHEET 20.

PENDING

30 RETAINING WALL DRAINAGE INTERCEPTOR DITCH STORM DRAIN DETAIL
NTS

PENDING

PENDING

28 CIDH PILE DETAILS
NTS

60% DESIGN PLANS
NOT FOR CONSTRUCTION
NOVEMBER 1, 2011



PLAN PREPARED BY:
Harris & Associates
34 Executive Park, Suite 150
Irvine, CA 92614 (949) 655-3900
RANDALL G. BERRY RCE #44642 DATE

CITY OF RANCHO PALOS VERDES
RON DRAGOO SENIOR ENGINEER DATE
RCE: 54924

NO.	DATE	DESCRIPTION	APPROVED
REVISIONS			

DESIGNED RGB/EGS/PL
DRAWN EGS/PL
CHECKED RGB
DATE OCT 11

CITY OF RANCHO PALOS VERDES



SAN RAMON STORM DRAIN
DETAILS

SHEET 21 OF 31
SHT. 21
PRJ NO. XXXXX