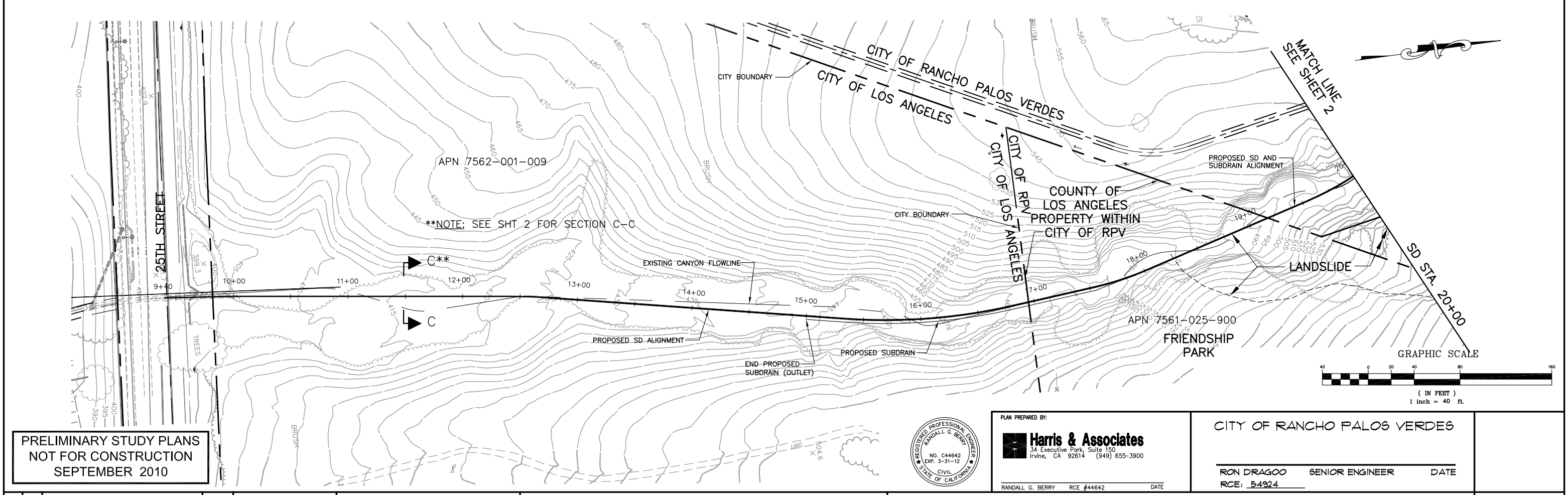


SCALE
 HORIZ: 1"=40'
 VERT: 1"=20'



PRELIMINARY STUDY PLANS
 NOT FOR CONSTRUCTION
 SEPTEMBER 2010



PLAN PREPARED BY:
Harris & Associates
 34 Executive Park, Suite 150
 Irvine, CA 92614 (949) 655-3900
 RANDALL G. BERRY RCE #44642 DATE

CITY OF RANCHO PALOS VERDES
 RON DRAGOO SENIOR ENGINEER DATE
 RCE: 54924

NO.	DATE	DESCRIPTION	APPROVED
REVISIONS			

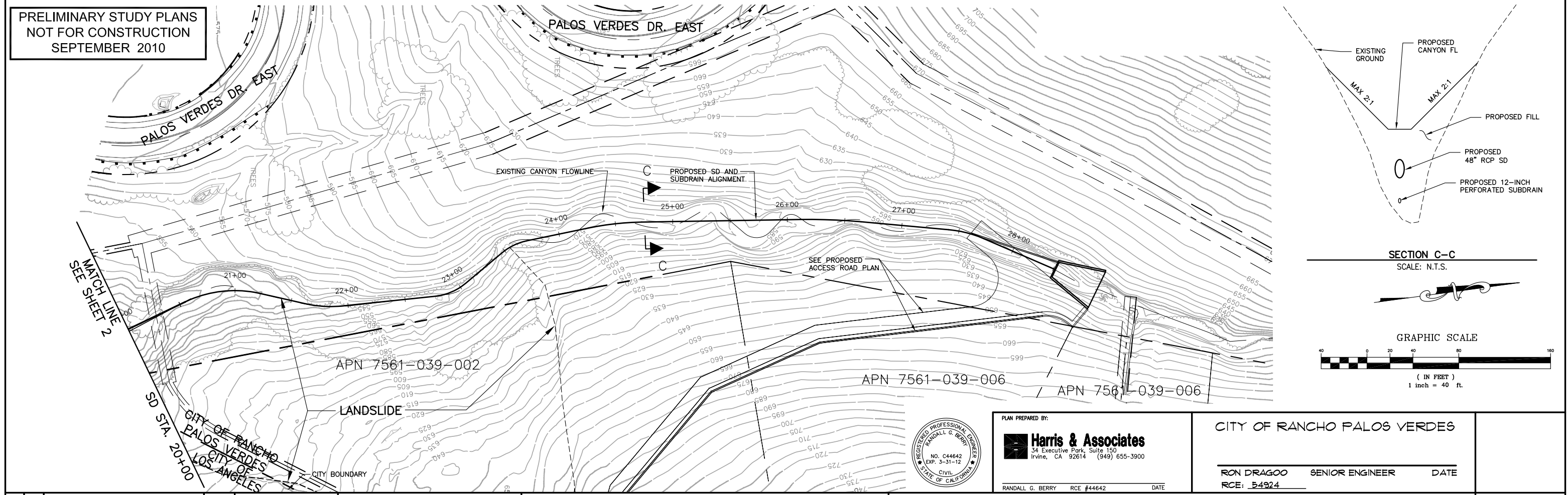
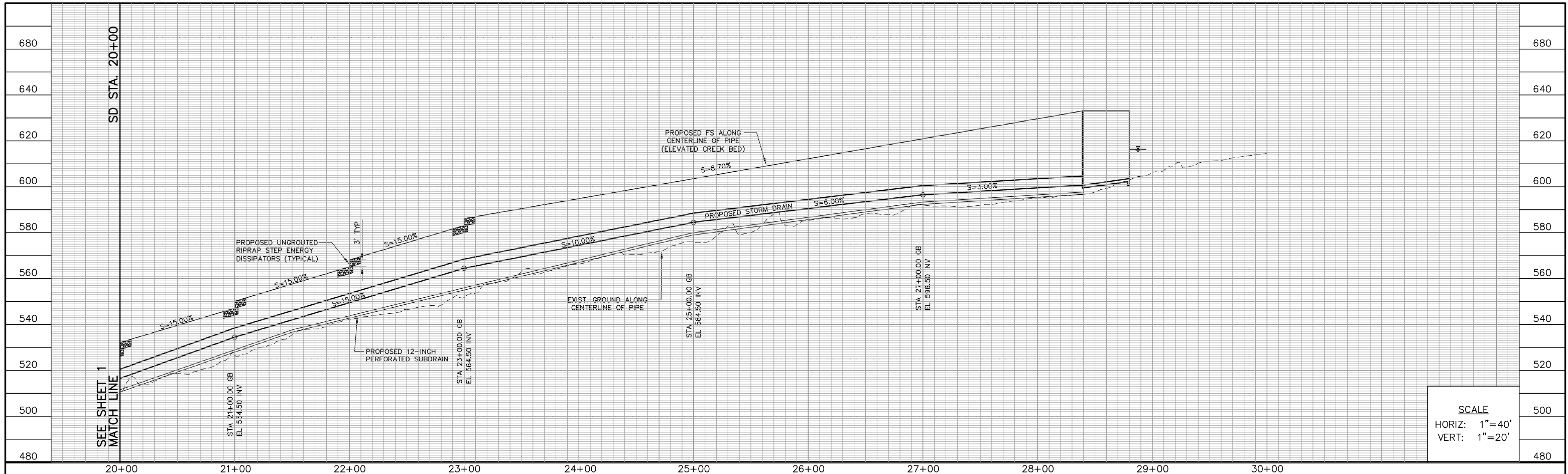
DESIGNED: SGP/EG
 DRAWN: EGR
 CHECKED: RGB
 DATE: SEPT 10

CITY OF RANCHO PALOS VERDES



SAN RAMON STORM DRAIN
 ALTERNATIVE 2A

SHEET 1 OF 2
 PRJ NO. XXXXX



NO.	DATE	DESCRIPTION	APPROVED
REVISIONS			

DESIGNED	<u>RGP/EG</u>
DRAWN	<u>EGR</u>
CHECKED	<u>RGB</u>
DATE	<u>SEPT 10</u>

CITY OF RANCHO PALOS VERDES



PLAN PREPARED BY:
Harris & Associates
34 Executive Park, Suite 150
Irvine, CA 92614 (949) 655-3900

RANDALL G. BERRY RCE #44642 DATE

CITY OF RANCHO PALOS VERDES

RON DRAGOO SENIOR ENGINEER DATE

RCE: 54924

SAN RAMON STORM DRAIN
ALTERNATIVE 2A