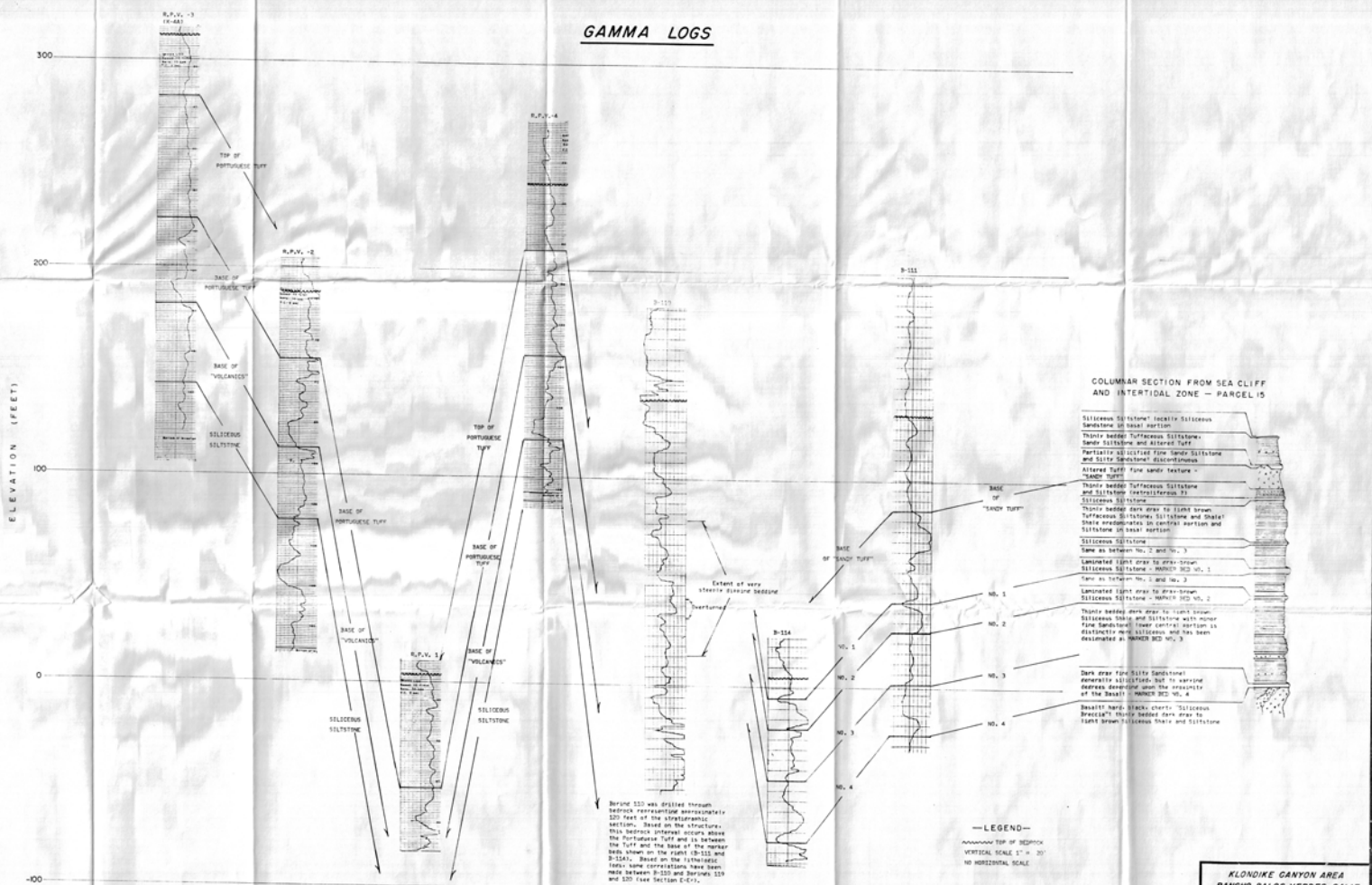


# GAMMA LOGS



Borehole 113 was drilled through bedrock representing approximately 120 feet of the stratigraphic section. Based on the structure, this bedrock outcrop occurs above the Portuguese Tuff and is between the Tuff and the base of the upper Basal Sandstone on the right (B-111 and B-114). Based on the lithologic and core sand correlations, we have made between B-113 and Borehole 113 and 120 (see Section E-17).

### COLUMNAR SECTION FROM SEA CLIFF AND INTERTIDAL ZONE - PARCEL 15

- Siliceous Siltstone locally Siliceous Sandstone in basal portion
- Thinly bedded Tuffaceous Siltstone, Sand, Siltstone and altered Tuff
- Partially silicified fine sandy Siltstone and Silty Sandstone/Glauconitic
- Altered Tuff fine sandy texture - "SANDY TUFF"
- Thinly bedded Tuffaceous Siltstone and Siltstone (vertical interval 91)
- Siliceous Siltstone
- Thinly bedded dark gray to light brown Tuffaceous Siltstone, Siltstone and Shale? Shale fragments in central portion and Siltstone in basal portion
- Siliceous Siltstone
- Thin to medium No. 2 and No. 3
- Laminated light gray to gray-brown Siliceous Siltstone - MONROE BCD vol. 1
- Thin to medium No. 2 and No. 3
- Laminated light gray to gray-brown Siliceous Siltstone - MONROE BCD vol. 2
- Thinly bedded dark gray to light brown Siliceous Siltstone and Siltstone with some fine Sandstone? (lower central portion is distinctly more Siliceous and has been designated as MONROE BCD vol. 3)
- No. 1
- No. 2
- No. 3
- Dark gray fine Silty Sandstone? (lower silicified part is somewhat darker depending upon the intensity of the Basal Sandstone BCD vol. 3)
- Shaly? hard black cherty "Siliceous Breccia" thinly bedded dark gray to light brown Siliceous Shale and Siltstone

— LEGEND —  
 ~~~~~ TOP OF BEDROCK  
 VERTICAL SCALE 1" = 20'  
 NO HORIZONTAL SCALE

**KLONDIKE CANYON AREA**  
**RANCHO PALOS VERDES, CALIF.**  
**STRATIGRAPHIC CORRELATIONS**

MOORE & TABER - Consulting Engineers & Geologists  
 3781 17th Street, Berkeley, California  
 378 17th St. Berkeley, CA 94710  
 11/30/80 3860 260

PLATE V