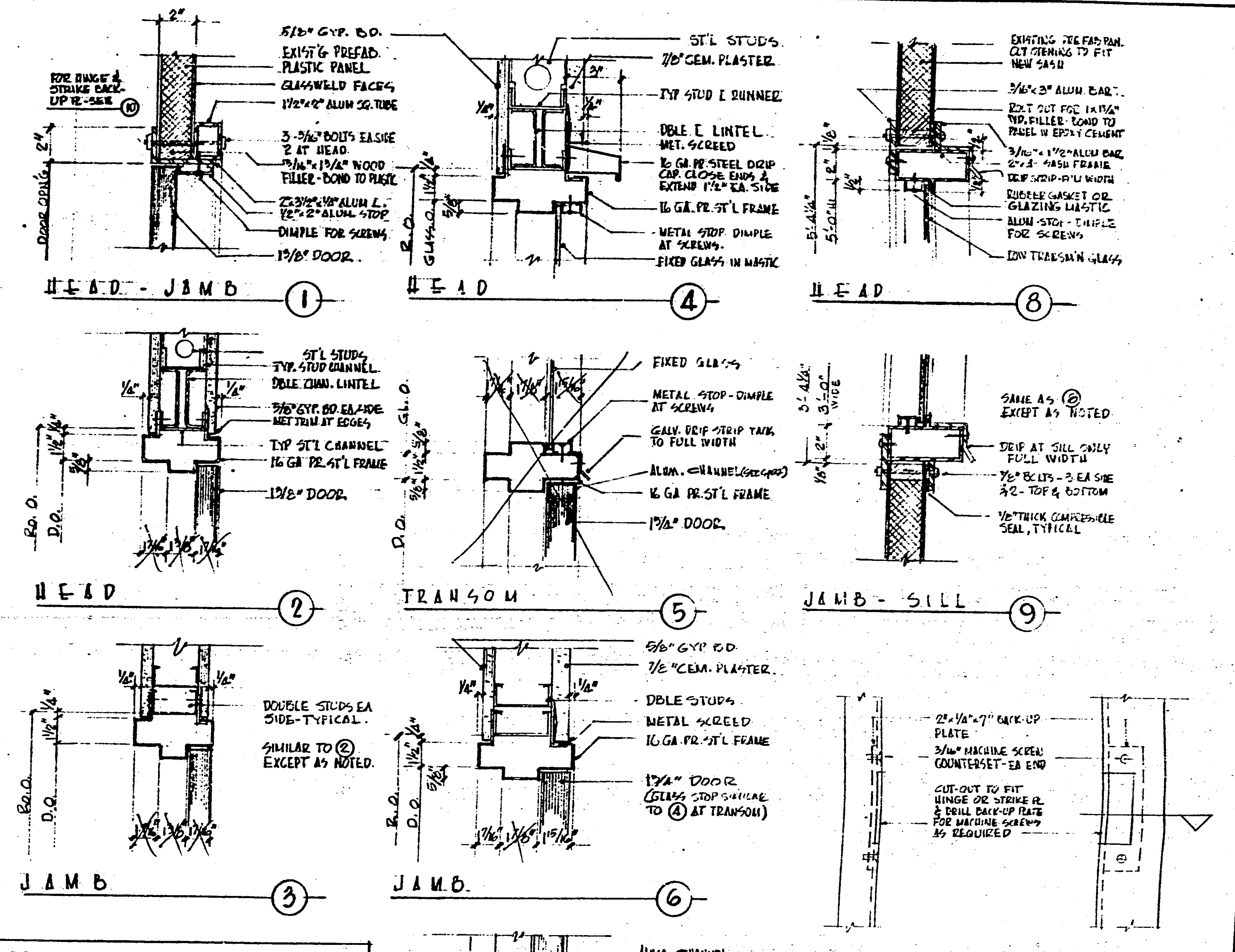


DOOR SCHEDULE

UNIT NO.	LOCATION	EXIST	DOOR	NEW	OPENING SIZE	THICK	TYPE	MAT'L	WD.	JMB	SILL	TRANS	LOUVERS	GLAZING	FIN	REMARKS	
UNIT A - ADMIN. & MULTI-USE	DA-1	SECRETARY	[A-5]	○	○	3'-0" x 6'-8"	2"	A	PLAST-ALUM								
	DA-2	WORK ROOM	[A-7]	○	○	3'-0" x 6'-8"	2"	A	PLAST-ALUM								
	DA-3	MULTI-PURPOSE RM.	[A-1]	○	○	3'-0" x 6'-8"	2"	A	PLAST-ALUM								
	DA-4	MULTI-PURPOSE RM.	[A-1]	○	○	3'-0" x 6'-8"	2"	A	PLAST-ALUM								EXIT SIGN & PANIC BAR
	DA-5	MULTI-PURPOSE RM.	[A-1]	○	○	3'-0" x 6'-8"	2"	A	PLAST-ALUM								EXIT SIGN & PANIC BAR
	DA-6	MULTI-PURPOSE RM.	[A-1]	○	○	3'-0" x 6'-8"	2"	A	PLAST-ALUM								EXIT SIGN & PANIC BAR
UNIT A - ADMIN. & MULTI-USE	DA-7	WORK ROOM	[A-7]	○	○	2'-8" x 6'-8"	1 7/8"	B	SOL-WD.	1	1						
	DA-8	REST ROOM	[A-5]	○	○	2'-8" x 6'-8"	1 7/8"	C	SOL-WD.	2	3			1'-9" x 1'-0"	1'-9" x 2'-0"		WIRED GLASS
	DA-9	TOILET	[A-7]	○	○	2'-2" x 6'-8"	1 7/8"	B	SOL-WD.	2	3			1'-5" x 1'-0"			
	DA-10	SECRETARY	[A-5]	○	○	2'-8" x 6'-8"	1 7/8"	C	SOL-WD.	2	3				1'-9" x 2'-0"		WIRED GLASS
	DA-11	OFFICE	[A-5]	○	○	2'-8" x 6'-8"	1 7/8"	C	SOL-WD.	2	3			UNDERCUT 1"	1'-9" x 2'-0"		WIRED GLASS
	DA-12	OFFICE	[A-1]	○	○	2'-8" x 6'-8"	1 7/8"	C	SOL-WD.	2	3			UNDERCUT 1"	1'-9" x 2'-0"		WIRED GLASS
UNIT B - CLASSROOMS	DB-1	CLASSROOM	[B-1]	○	○	3'-0" x 6'-8"	2"	A	PLAST-ALUM								
	DB-2	CLASSROOM	[B-1]	○	○	3'-0" x 6'-8"	2"	A	PLAST-ALUM								
	DB-3	CLASSROOM	[B-2]	○	○	3'-0" x 6'-8"	2"	A	PLAST-ALUM								
	DB-4	CLASSROOM	[B-2]	○	○	3'-0" x 6'-8"	2"	A	PLAST-ALUM								
	DB-5	CLASSROOM	[B-3]	○	○	3'-0" x 6'-8"	2"	A	PLAST-ALUM								
	DB-6	CLASSROOM	[B-3]	○	○	3'-0" x 6'-8"	2"	A	PLAST-ALUM								
UNIT C - CLASSROOMS	DC-1	CLASSROOM	[C-1]	○	○	3'-0" x 6'-8"	2"	A	PLAST-ALUM								
	DC-2	CLASSROOM	[C-1]	○	○	3'-0" x 6'-8"	2"	A	PLAST-ALUM								
	DC-3	CLASSROOM	[C-2]	○	○	3'-0" x 6'-8"	2"	A	PLAST-ALUM								
	DC-4	CLASSROOM	[C-2]	○	○	3'-0" x 6'-8"	2"	A	PLAST-ALUM								
	DC-5	CLASSROOM	[C-3]	○	○	3'-0" x 6'-8"	2"	A	PLAST-ALUM								
	DC-6	CLASSROOM	[C-3]	○	○	3'-0" x 6'-8"	2"	A	PLAST-ALUM								
UNIT D - CLASSROOMS	DD-1	CLASSROOM	[D-1]	○	○	3'-0" x 6'-8"	2"	A	PLAST-ALUM								
	DD-2	CLASSROOM	[D-1]	○	○	3'-0" x 6'-8"	2"	A	PLAST-ALUM								
	DD-3	CLASSROOM	[D-2]	○	○	3'-0" x 6'-8"	2"	A	PLAST-ALUM								
	DD-4	CLASSROOM	[D-2]	○	○	3'-0" x 6'-8"	2"	A	PLAST-ALUM								
	DD-5	CLASSROOM	[D-3]	○	○	3'-0" x 6'-8"	2"	A	PLAST-ALUM								
	DD-6	CLASSROOM	[D-3]	○	○	3'-0" x 6'-8"	2"	A	PLAST-ALUM								
UNIT E - TOILETS - KINDERGARTEN	DE-1	BOYS' TOILET	[E-3]	○	○	3'-0" x 6'-8"	2"	D	PLAST-ALUM								
	DE-2	CUSTODIAN	[E-9]	○	○	8'-0" x 6'-8"	2"	F	PLAST-ALUM								
	DE-3	GIRLS' TOILET	[E-2]	○	○	3'-0" x 6'-8"	2"	D	PLAST-ALUM								
	DE-4	KINDERGARTEN CR.	[E-7]	○	○	3'-0" x 6'-8"	2"	A	PLAST-ALUM								
	DE-5	KINDERGARTEN CR.	[E-11]	○	○	3'-0" x 6'-8"	2"	A	PLAST-ALUM								
	DE-6	MEN'S TOILET	[E-4]	○	○	2'-2" x 6'-8"	1 7/8"	E	SOL-WD.	4	6	7	5	15" x 12"	2'-2" x 1'-6"		* TRANSOM - FIXED GLASS
	DE-7	WOMEN'S TOILET	[E-5]	○	○	2'-2" x 6'-8"	1 7/8"	E	SOL-WD.	4	6	7	5	15" x 12"	2'-2" x 1'-6"		* TRANSOM - FIXED GLASS
	DE-8	REC. PANEL BD.	[E-6]	○	○	PR. 4'-0" x 7'-0"	1 7/8"	G	SOL-WD.	12	12			15" x 12"			
	DE-9	KINDERGARTEN TOILET	[E-4]	○	○	2'-2" x 6'-8"	1 7/8"	B	SOL-WD.	2	3			UNDERCUT 1"			



NOTES - DOORS, WINDOWS, FRAMES

1. ALL EXISTING DOORS, WINDOWS & THRESHOLDS REMAIN. LOCK SETS REMOVED FROM MULTI-PURPOSE ROOM DOORS FOR INSTALLATION OF PANIC BARS TO BE USED ON NEW EXTERIOR DOORS, TOILETS E4-E5.
2. DIRECTION OF SWING TO BE AS SHOWN ON PLANS.
3. PROVIDE DOOR CLOSERS FOR ALL TOILET DOORS.
4. PROVIDE DOOR ANCHORS AND BASE PLATES PER DETAIL (11) FOR ALL EXT. DOORS AT LOCATIONS INDICATED ON PLANS.
5. METAL LOUVERS FOR NEW DOORS TO BE SIMILAR TO SIROLITE FIXED INVERTED Y OR V BLADE TYPE WITH INSECT SCREENS ON INNER SIDE.
6. SECURELY ANCHOR DOOR FRAMES TO JAMBS AT NOT LESS THAN 3 POINTS EACH SIDE.
7. FLUSH WELD AND GRIND SMOOTH ALL JOINTS AT CORNERS OF STEEL FRAMES.
8. PROVIDE ALL STEEL FRAMES WITH SUBSTANTIAL BACK UP PLATES, SECURELY AND ACCURATELY INSTALLED FOR HINGES & SCREWS.
9. NEW GLAZING AT CLASSROOMS TO BE LOW TRANSMISSION GLASS TO MATCH EXISTING AND AS SPECIFIED.
10. REPLACE ALL BROKEN OR CRACKED GLASS WITH NEW, UNDAUNAGED GLASS, PROPERLY INSTALLED.
11. AT DOOR & WINDOWS TO BE INSTALLED IN PREFAB PANELS, REMOVE PANEL IF NECESSARY, CUT ACCURATELY TO RECEIVE FRAMES AS DETAILED AND RE-INSTALL IN WALLS.

