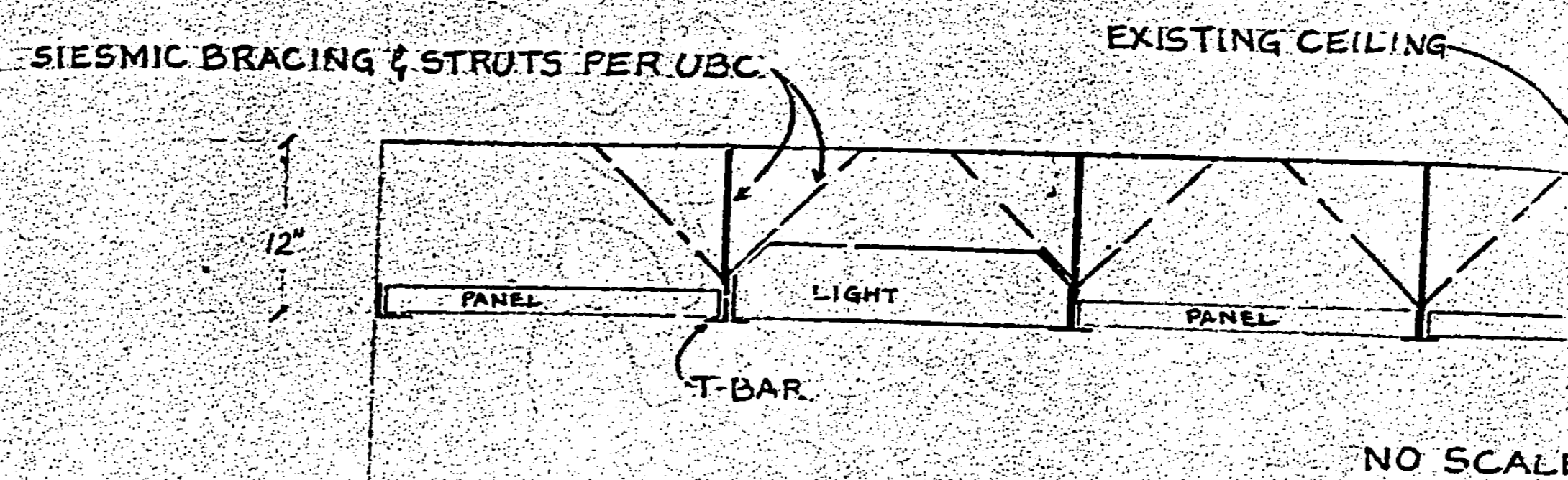


# CEILING, LIGHTING, & ELECTRICAL PLAN

## GENERAL NOTES & LEGEND

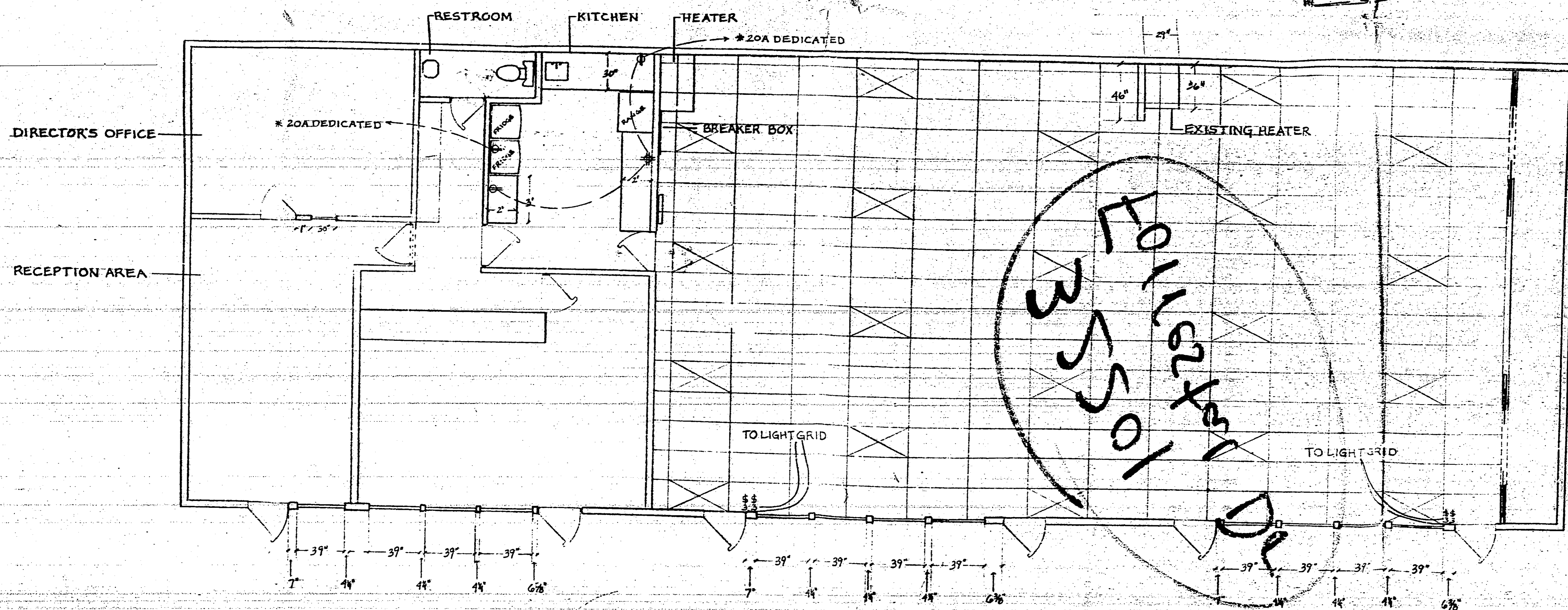
- ☒ = 2'x4' DROP IN FLUORESCENT FIXTURE, 4 BULB, SPLIT BALLAST
- ☐ = T-BAR DROP CEILING, 2'x4' GRID, NON DIRECTIONAL PANELS
- ⊕ = 110 FOURPLEX OUTLET
- ⊕ = 110 DUPLEX OUTLET
- ⊕ = DEDICATED CIRCUIT, 110 DUPLEX OUTLET
- § = THREE-WAY SWITCH
- \* ALL WIRING SHALL CONFORM TO THE LATEST ADOPTED EDITION OF THE NATIONAL ELECTRICAL CODE.

## DETAIL



CITY OF RANCHO PALOS VERDES  
APPROVED

The City of Rancho Palos Verdes plans & specifications must be used on the job at all times and it is prohibited to make any changes or alterations on same without written permission from Building and Safety, City of Rancho Palos Verdes. The City of Rancho Palos Verdes shall not be held liable for any violation of any provisions of any City Ordinance or State Law.



REVISIONS	BY

LADERA LINDA COMMUNITY CENTER  
32201 FORRESTAL DRIVE  
RANCHO PALOS VERDES, CA, 90274

DRAWN W. WARRINER
CHECKED
DATE
SCALE 1/4" = 1'
JOB NO.
SHEET 3
OF SHEETS