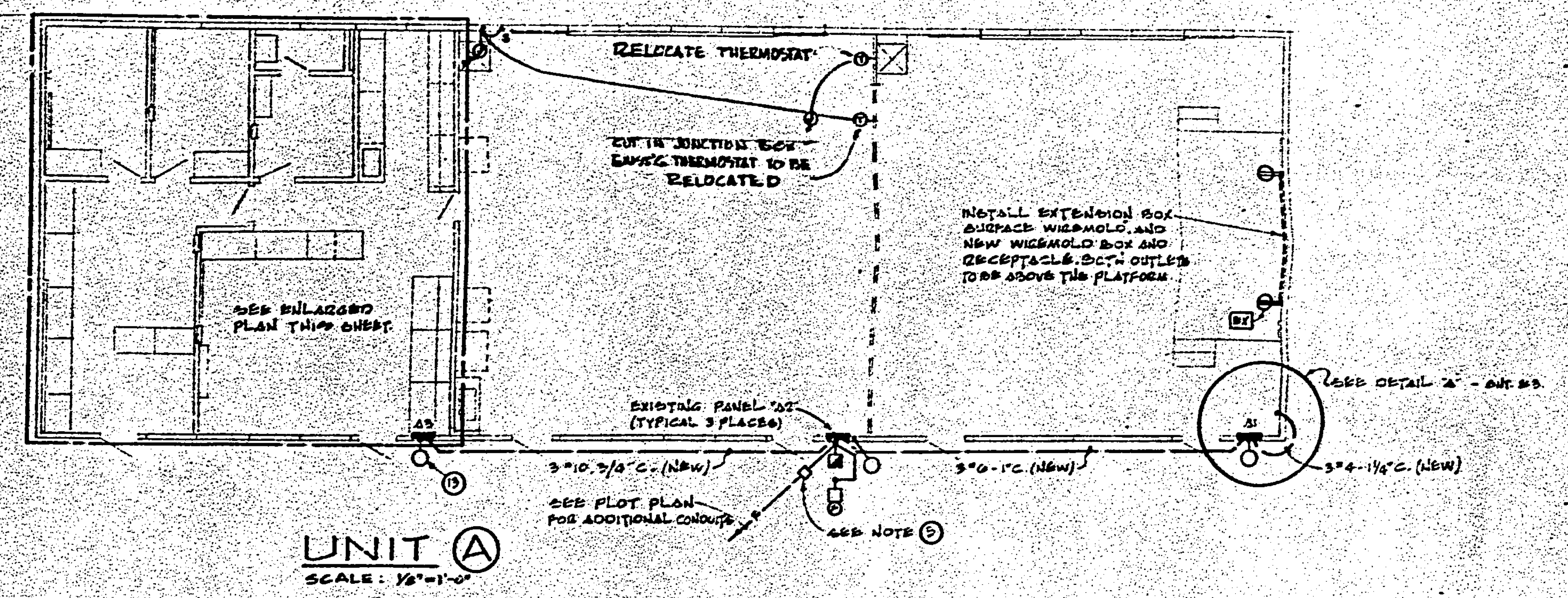
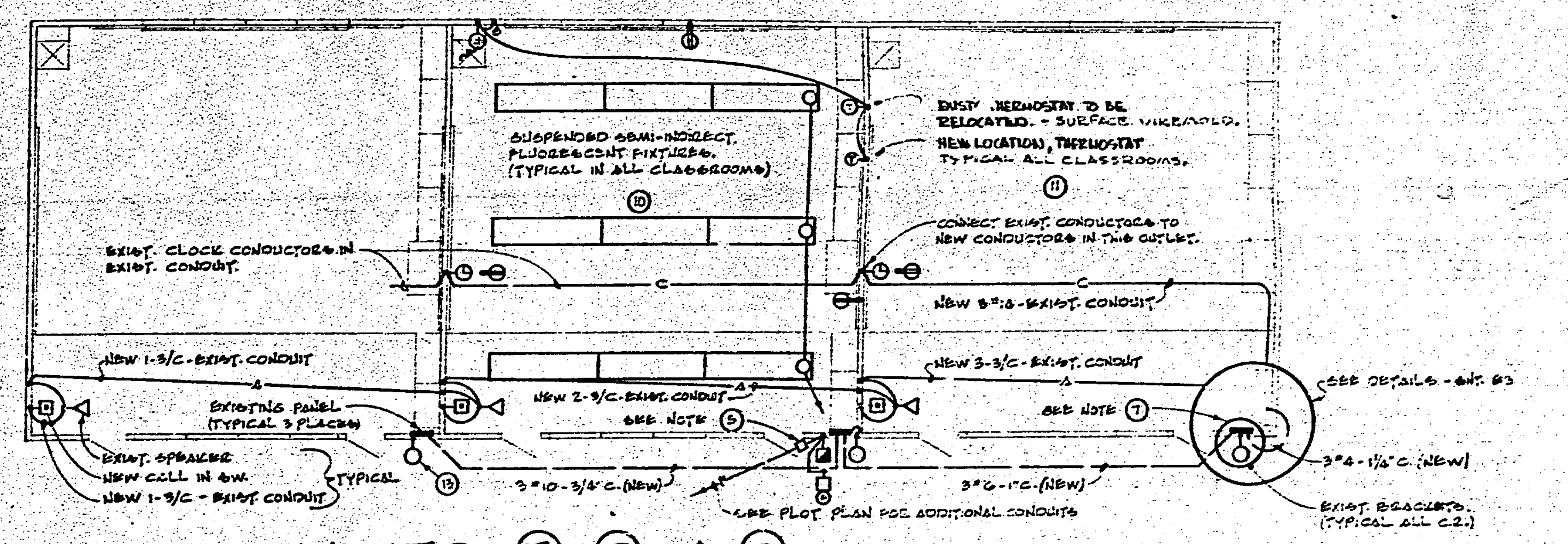


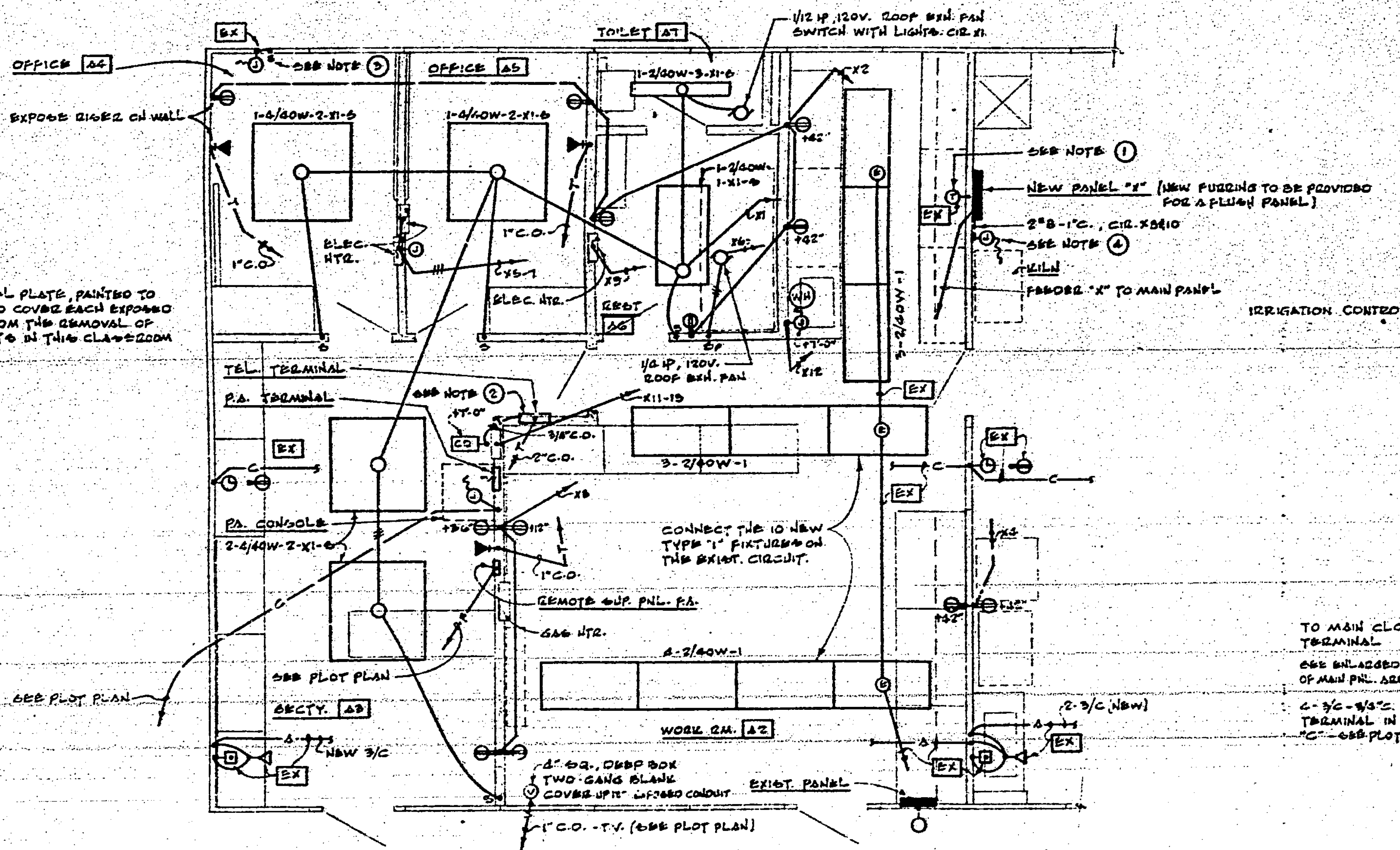
ENLARGED TOILETS — UNIT E
SCALE: 1/4" = 1'-0"



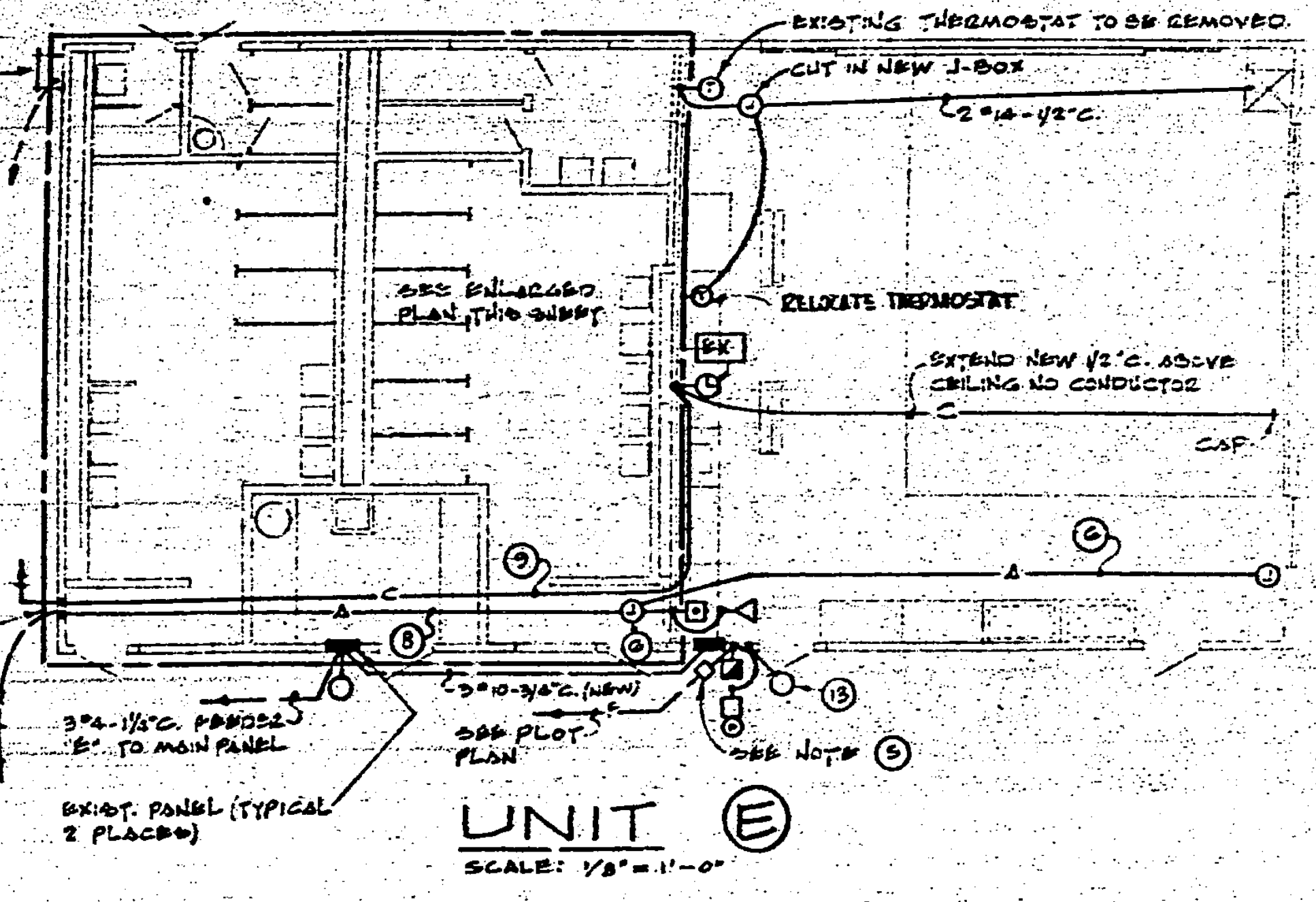
UNIT A
SCALE: 1/8" = 1'-0"



UNITS B C & D
SCALE: 1/8" = 1'-0"



ENLARGED ADMINISTRATION — UNIT A
SCALE: 1/4" = 1'-0"



UNIT E
SCALE: 1/8" = 1'-0"

- NOTES:**
- REMOVE THE EXISTING THERMOSTAT, TAKE CONDUCTORS, INSTALL BLANK PLATE.
 - TELEPHONE TERMINAL SHALL BE 24" SQ. C. CASE, WITH 1/2" PLYWOOD ON SEAS FACE.
 - DISCONNECT THE EXISTING SPACE HEATER, TAKE UP THE CONDUCTORS, INSTALL BLACK PLATE.
 - RUN CONDUIT EXPOSED ON WALL, CONNECT TO LULW WITH RIGID CONDUIT OR FLEX.
 - THE EXIST. BREAK GLASS OUTLET AND THE FIBER BALL NOW HAVE C-2-3/4" C. REMOVE CONDUCTORS, BREAK GLASS STATION AND BALL REPLACE AS PER SPECIFICATION - SEE SCHEMATIC SHEET 11.
 - CUT IN NEW J-BOX, EXTEND 1/2" C. 24" DOWN AND PULL 2-3/4" TO J-BOX AT END OF RUN.
 - SEE SPECIFICATIONS FOR DESCRIPTION OF CONNECTIONS TO POWER PANELS AND SIGNAL CONDUITS.
 - INSTALL 3-3/4" IN EXISTING 3/4" C.
 - INSTALL 3/4" IN EXISTING 3/4" C.
 - OUTLETS IN THE CLASSROOM ARE TYPICAL FOR ALL ROOMS. NO ELECTRICAL CHANGES WILL BE REQUIRED EXCEPT WHERE SPECIFICALLY SHOWN.
 - CLOCK AND PA. WIRES SHOWN HERE IS TYPICAL FOR ALL UNITS.
 - IF C-3/4" BUILDINGS ARE SEPARATED FOR REAS OF NOISE, ALL ELECTRICAL CONNECTIONS MUST BE GRANDED - NO SPLICES WILL BE ALLOWED OTHER THAN IN PULL BOXES OR LEGAL SIZE ACCESS.
 - SEE SPECIFICATION RE: TIME SWITCHES AT EACH EXISTING EXTERIOR WALL BRACKET.