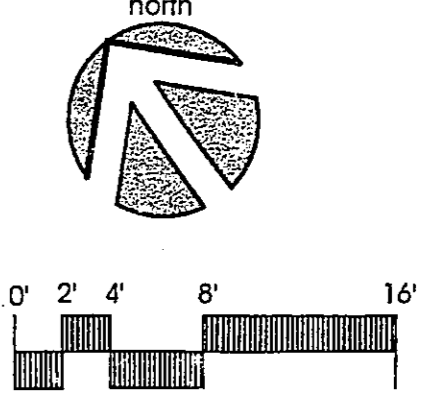
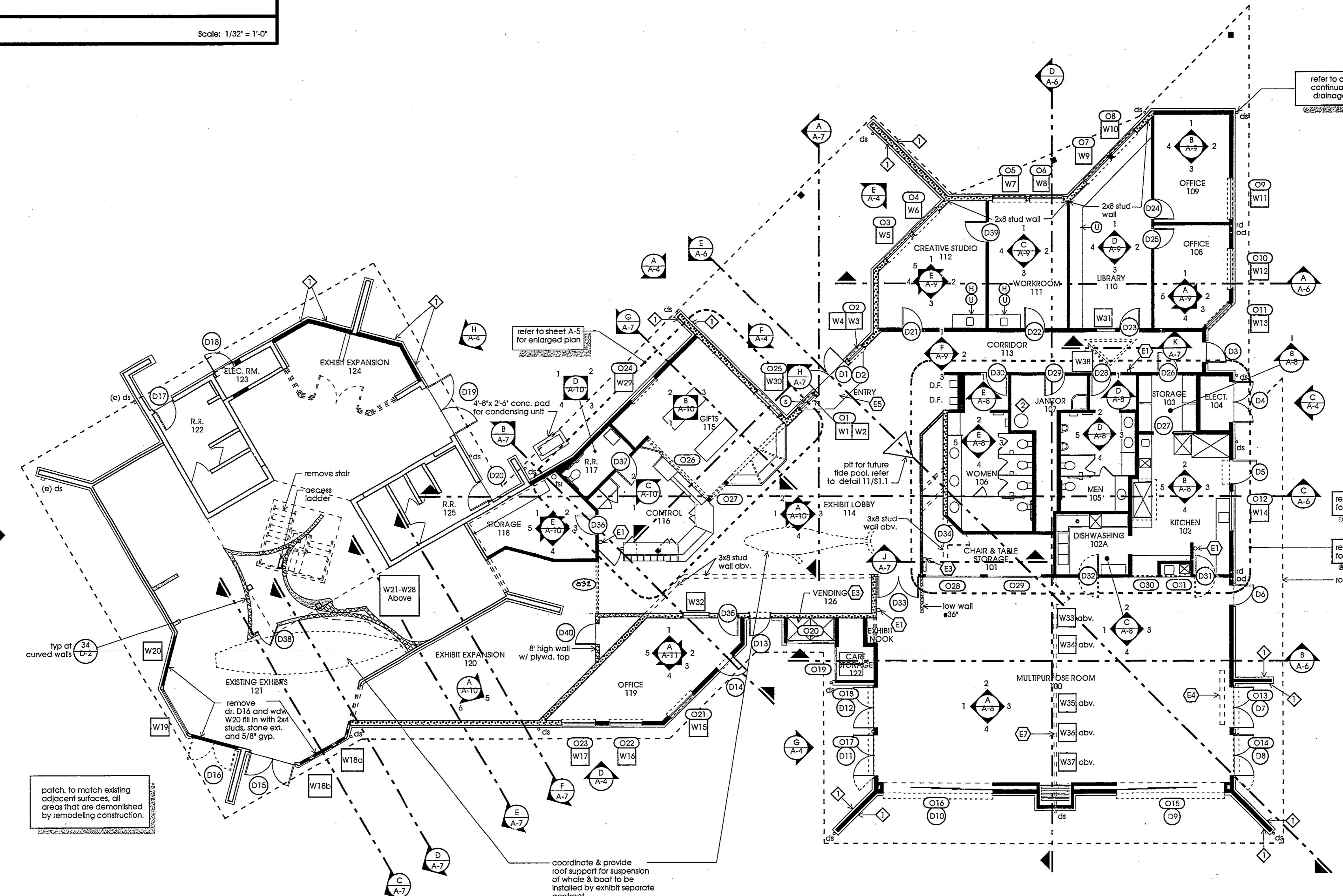
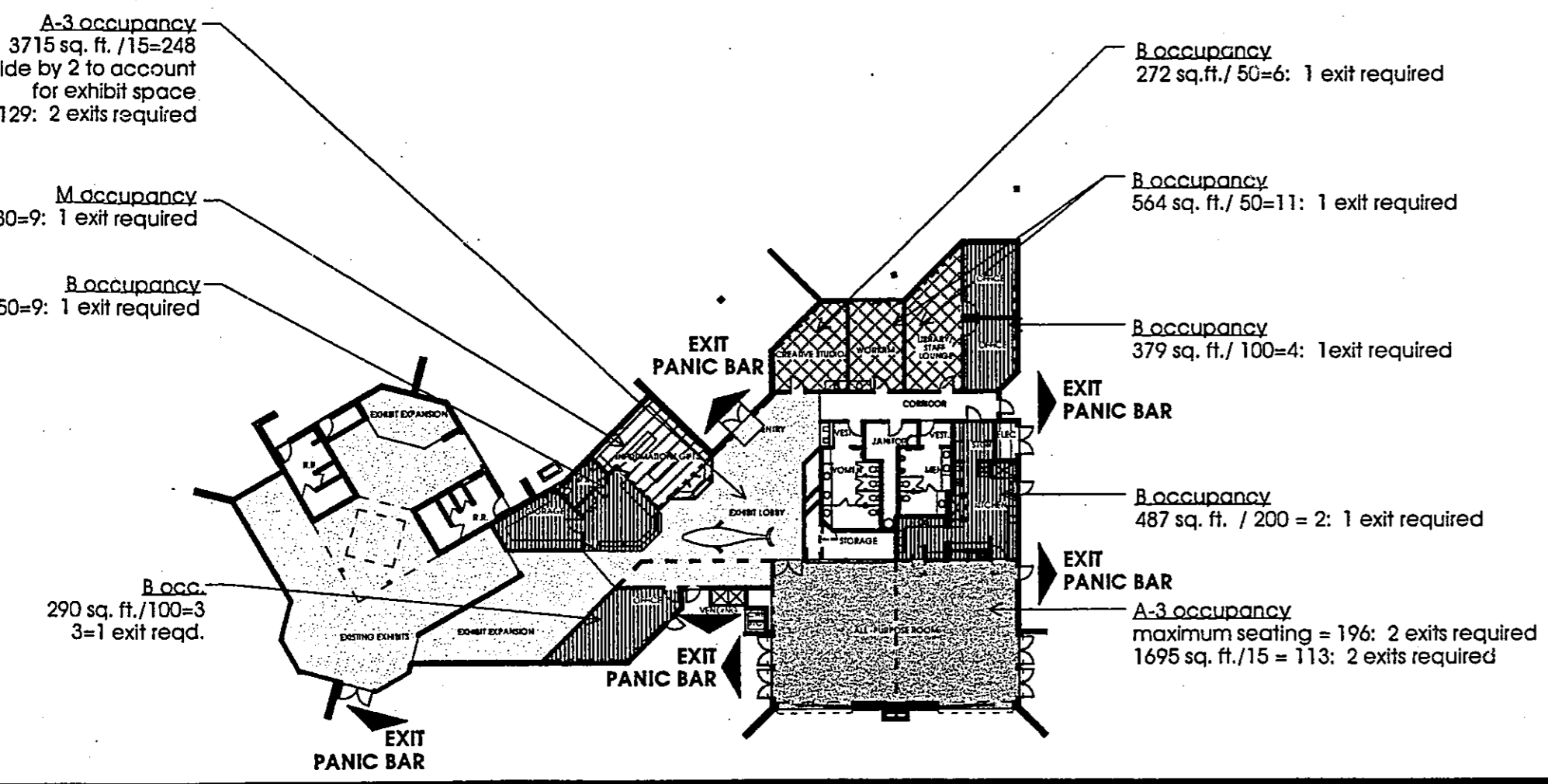


border
paper edges
to scratch



Ron Yeo, Architect Inc. expressly reserves its right to make any changes or corrections in any part of these drawings without the written permission and consent of Ron Yeo, Architect Inc.

RON YEO, FAIA ARCHITECT, INC.
 300 JASMINE AVENUE, CORONA DEL MAR
 ALHAMBRA, CA 91706-1449
 PATRICK MARR, AIA, PE, ASSOCIATE ARCHITECT



12/23/03 update revisions
 214 Stiles Dr. 9007

POINT VICENTE INTERPRETIVE CENTER EXPANSION
 31501 Palms Verdes Drive West
 Rancho Palms Verdes, CA

Floor Plan

DRAWN PM/MG
 CHECKED JY
 DATE 2/1/99
 SCALE (as noted)
 JOB NO. 95-120
 SHEET
A-1
 14 OF 27 SHEETS