

| | |
|---------------------|----------|
| PLAN CHECK SUBMITAL | 9-28-98 |
| PLAN CHECK COMMENTS | 1-15-99 |
| COORDINATION | 9-7-99 |
| 2001 CBC UPDATE | 11-18-03 |
| C.O. | 1-28-05 |

RON YEO, FAIA ARCHITECT, INC.
 500 JASMINE AVENUE, CORONA DEL MAR
 CALIFORNIA 92625 P:949-644-8111 F:949-644-0449
 PATRICK MARR, AIA, PE, ASSOCIATE ARCHITECT

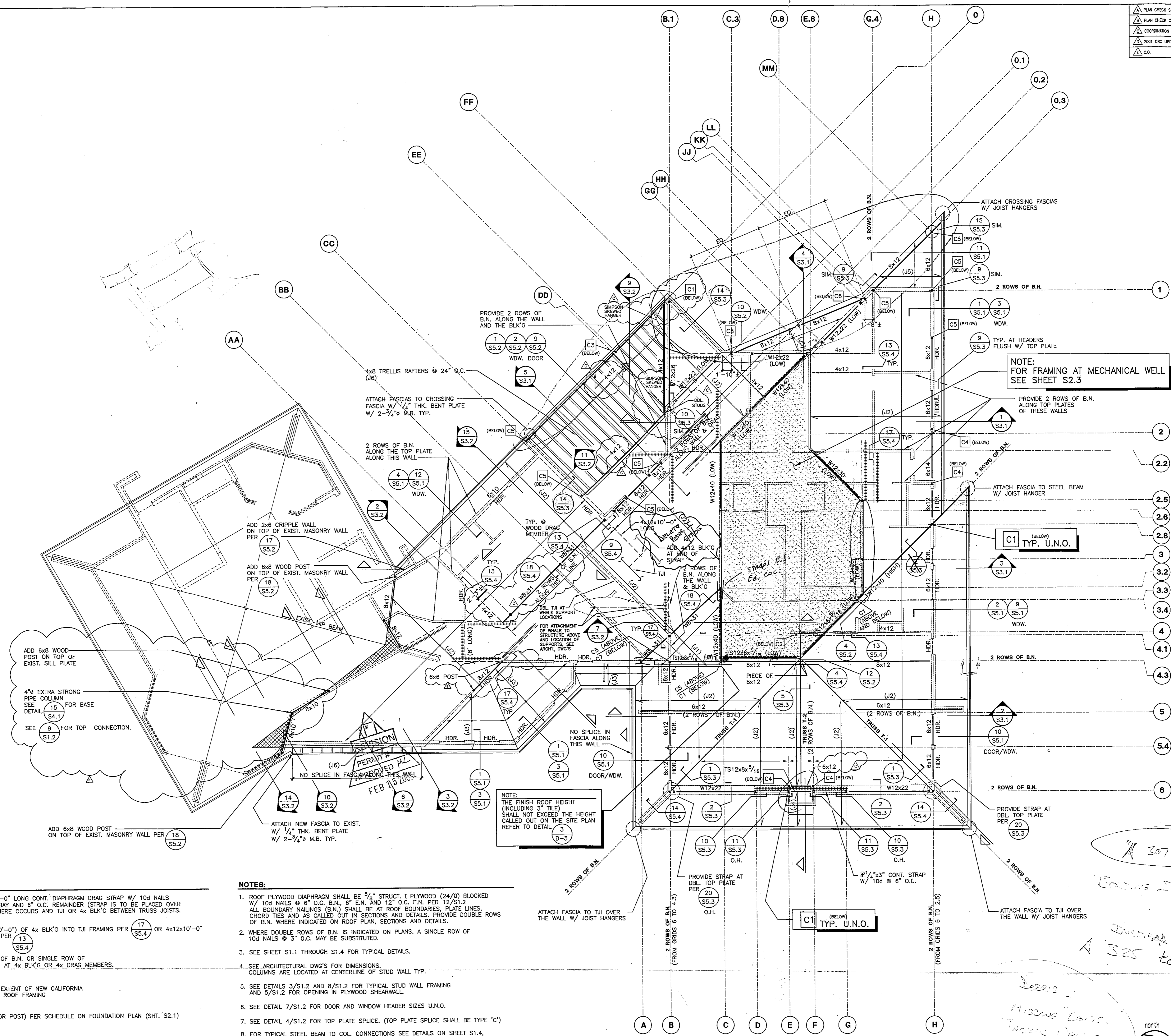
Handwritten notes and signatures

ABS Consulting
 EOE Structural Engineers Division
 300 Commerce Drive, Suite 300
 Irvine, CA 92618
 Phone: (714) 794-4242
 Fax: (714) 794-4272

POINT VICENTE INTERPRETIVE CENTER EXPANSION
 31501 Palms Verdes Drive, West
 Rancho Palms Verdes, CA

ROOF FRAMING PLAN

DRAWN DW
 CHECKED SA
 DATE
 SCALE 1/8" = 1'-0"
 JOB NO. 255541H
 SHEET
S2.2
 OF SHEETS



NOTE:
 FOR FRAMING AT MECHANICAL WELL
 SEE SHEET S2.3

NOTE:
 THE FINISH ROOF HEIGHT (INCLUDING 3" TILE) SHALL NOT EXCEED THE HEIGHT CALLED OUT ON THE SITE PLAN REFER TO DETAIL 3-D-3

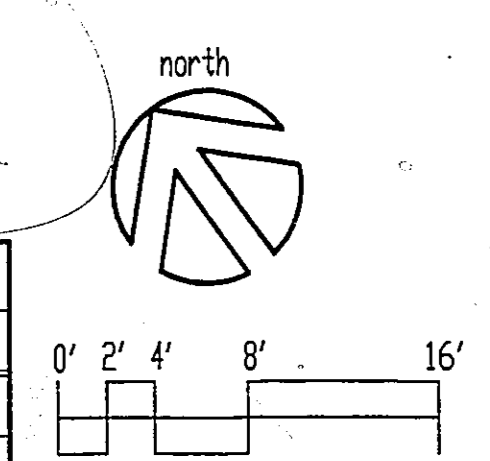
- LEGEND:**
- INDICATES 1/4"x3"x10'-0" LONG CONT. DIAPHRAGM DRAG STRAP W/ 10d NAILS @ 3" O.C. AT FIRST BAY AND 6" O.C. REMAINDER (STRAP IS TO BE PLACED OVER WALL DBL TOP PLATE WHERE OCCURS AND TJI OR 4x BLK'G BETWEEN TRUSS JOISTS).
 - INDICATES EXTENT (10'-0") OF 4x BLK'G INTO TJI FRAMING PER 17-S5.4 OR 4x12x10'-0" LONG DRAG MEMBER PER 13-S5.4
 - PROVIDE DBL. ROWS OF B.N. OR SINGLE ROW OF 10d NAILS @ 3" O.C. AT 4x BLK'G OR 4x DRAG MEMBERS.
 - INDICATES AREA AND EXTENT OF NEW CALIFORNIA FRAMING OVER EXIST. ROOF FRAMING
 - INDICATES COLUMN (OR POST) PER SCHEDULE ON FOUNDATION PLAN (SHT. S2.1)

- NOTES:**
- ROOF PLYWOOD DIAPHRAGM SHALL BE 5/8" STRUCT. I PLYWOOD (24/0) BLOCKED W/ 10d NAILS @ 6" O.C. B.N., 6" E.N. AND 12" O.C. F.N. PER 12/S1.2 ALL BOUNDARY NAILINGS (B.N.) SHALL BE AT ROOF BOUNDARIES, PLATE LINES, CHORD TIES AND AS CALLED OUT IN SECTIONS AND DETAILS. PROVIDE DOUBLE ROWS OF B.N. WHERE INDICATED ON ROOF PLAN, SECTIONS AND DETAILS.
 - WHERE DOUBLE ROWS OF B.N. IS INDICATED ON PLANS, A SINGLE ROW OF 10d NAILS @ 3" O.C. MAY BE SUBSTITUTED.
 - SEE SHEET S1.1 THROUGH S1.4 FOR TYPICAL DETAILS.
 - SEE ARCHITECTURAL DWG'S FOR DIMENSIONS. STUD WALL TYP. COLUMNS ARE LOCATED AT CENTERLINE OF STUD WALL TYP.
 - SEE DETAILS 3/S1.2 AND 8/S1.2 FOR TYPICAL STUD WALL FRAMING AND 5/S1.2 FOR OPENING IN PLYWOOD SHEARWALL.
 - SEE DETAIL 7/S1.2 FOR DOOR AND WINDOW HEADER SIZES U.N.O.
 - SEE DETAIL 4/S1.2 FOR TOP PLATE SPLICE. (TOP PLATE SPLICE SHALL BE TYPE 'C')
 - FOR TYPICAL STEEL BEAM TO COL. CONNECTIONS SEE DETAILS ON SHEET S1.4, FOR TYPICAL TRUSS JOIST TO STEEL BEAM CONNECTIONS SEE DETAIL 8/S1.3, FOR TYPICAL WOOD BEAM TO WOOD/STEEL POST CONNECTIONS SEE DETAIL 9/S1.2.
 - SEE ARCH'L DWG'S FOR WALL TOP PLATE ELEVATION AND ROOF HEIGHTS, TYP.
 - FOR TRUSS T-1 AND T-2 PROFILES SEE SHEET S6.1
 - FOR OPENING SIZES AND LOCATIONS SEE ARCH'L AND MECH'L DWG'S.
 - 3x12 FASCIA MEMBER SHALL BE CONTINUOUS. SPLICE PER DETAIL 10/S5.5 MIN. DISTANCE BETWEEN SPLICES SHALL BE 20'-0".

ROOF FRAMING PLAN
 SCALE: 1/8" = 1'-0"

ROOF JOIST SCHEDULE

| MARK | JOIST SIZE AND SPACING |
|------|---------------------------------|
| J1 | 11 1/8" DEEP TJI L65 @ 16" O.C. |
| J2 | 11 7/8" DEEP TJI L90 @ 16" O.C. |
| J3 | 11 7/8" DEEP TJI L65 @ 24" O.C. |
| J4 | 2x6 @ 16" O.C. |
| J5 | 4x8 @ 16" O.C. |
| J6 | 4x8 @ 24" O.C. |



common law copyright for these plans. These plans are not to be copied or reproduced in any way without the written consent of Ron Yeo, Architect, Inc.