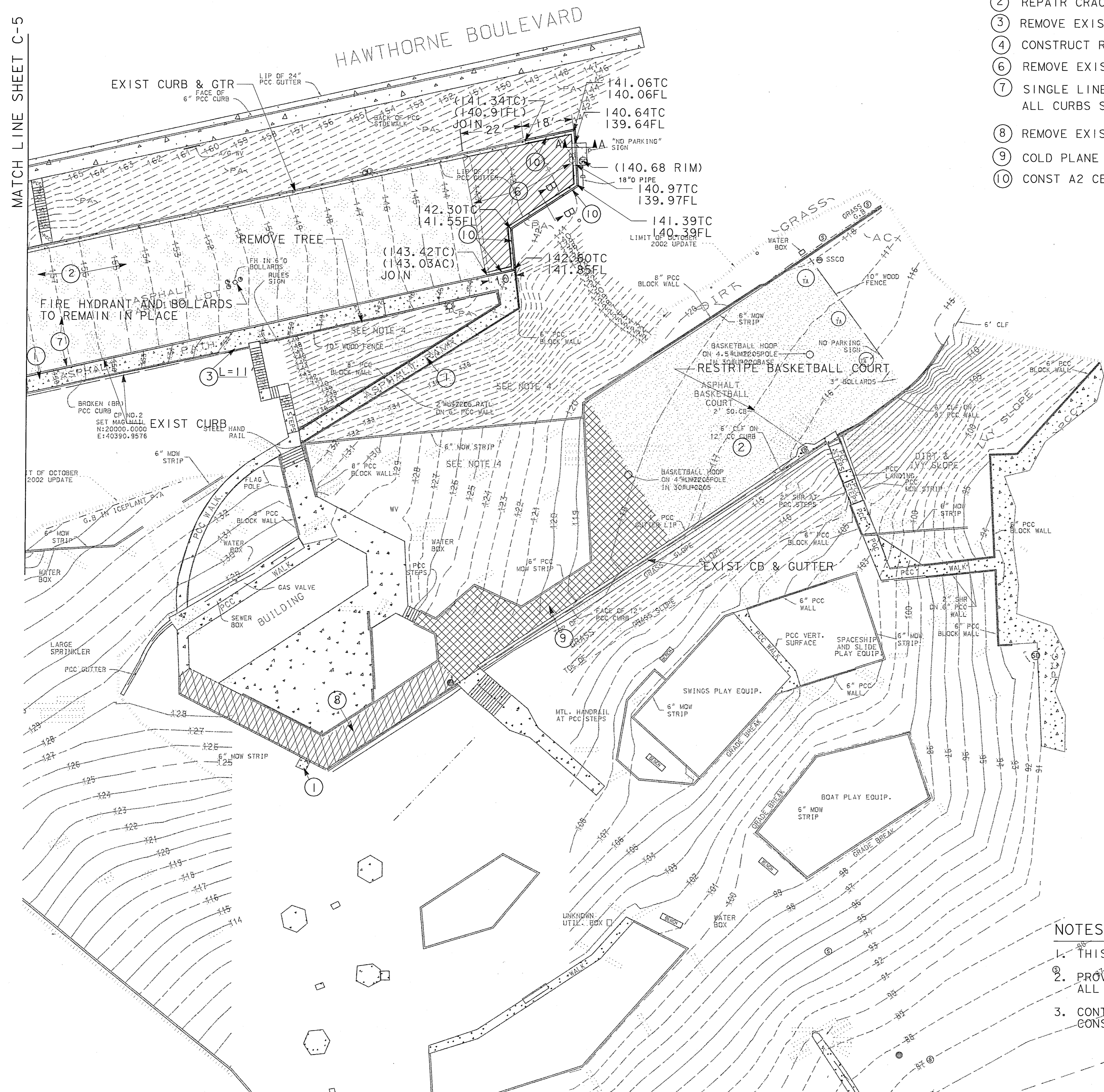


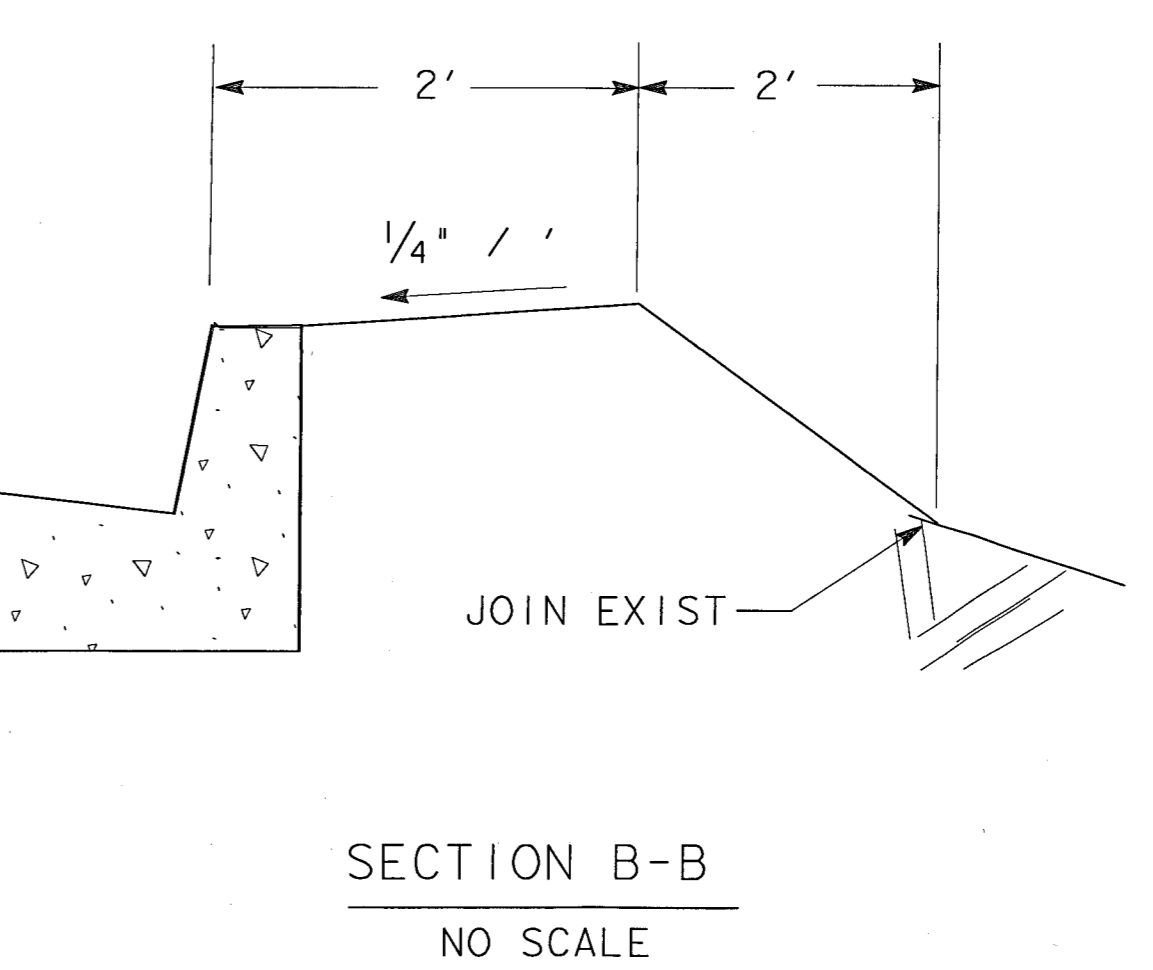
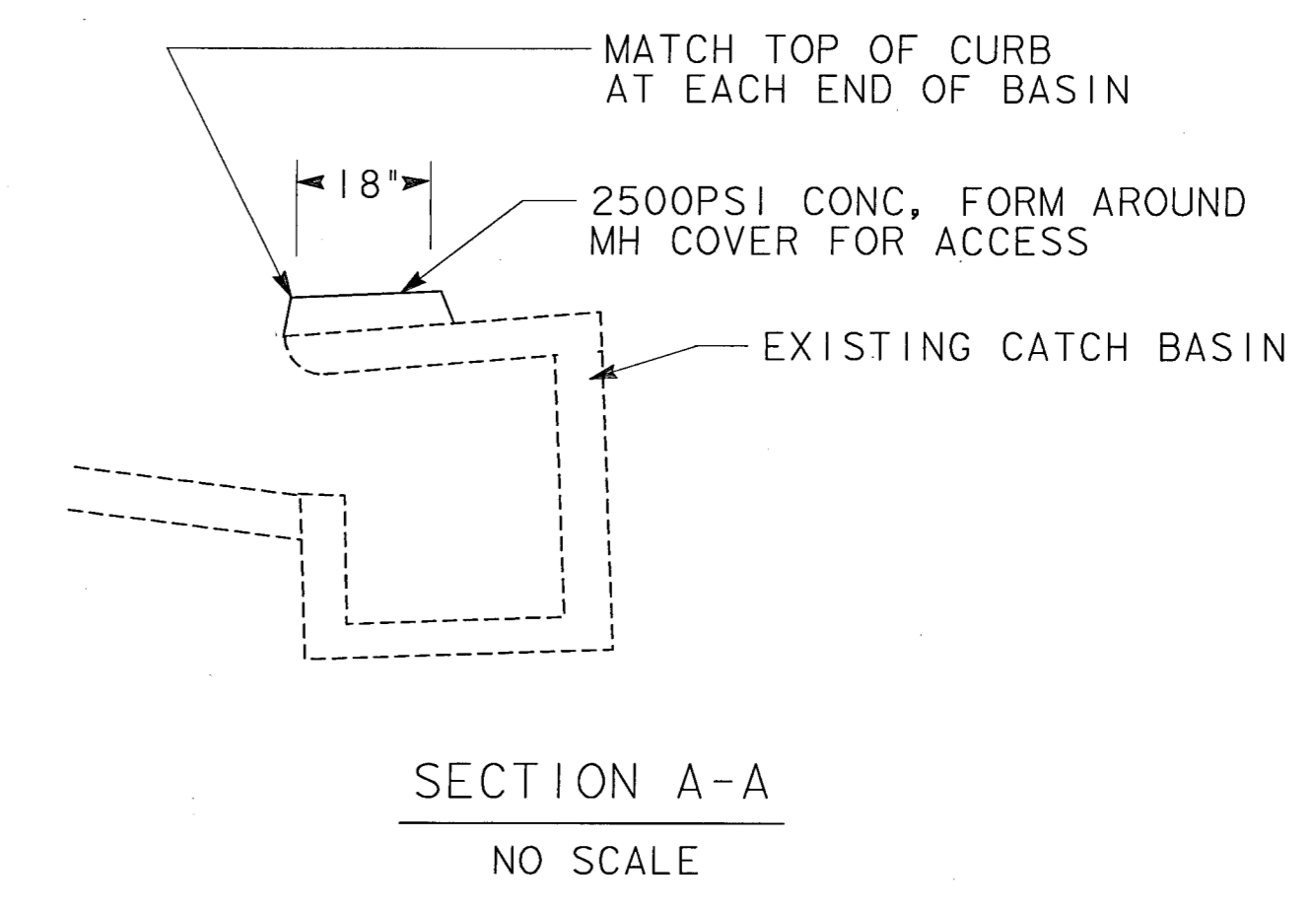
PROJECT ENGINEER	CHECKED BY	JCS	DATE	REVISOR	DATE

MATCH LINE SHEET C-5



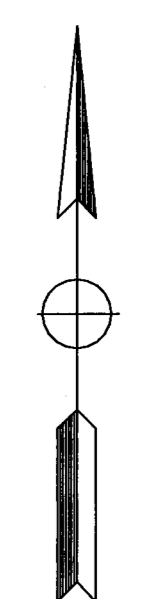
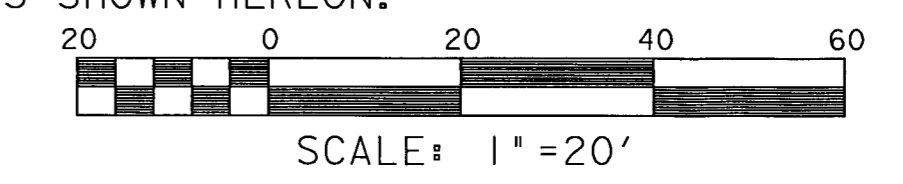
CONSTRUCTION NOTES FOR SHEETS C-5 & C-6:

- 1 REMOVE AC PVMT AND CONSTRUCT 4-INCH CONC ON NATIVE SOIL.
- 2 REPAIR CRACKS, SEAL 2 COATS
- 3 REMOVE EXIST CURB AND CONSTRUCT A1-6 CURB PER APWA STD 120-1.
- 4 CONSTRUCT REDWOOD HEADER PER DETAIL 1, SHEET C-7.
- 6 REMOVE EXIST PVMT AND CONSTRUCT 4" AC (2" CLASS D1 ON 2" CLASS B) ON 6" CMB
- 7 SINGLE LINE STRIPING, STD 8'-6", 18' LONG
ALL CURBS SHALL BE REPAINTED AND STENCILED PER EXISTING
- 8 REMOVE EXIST PVMT AND CONSTRUCT 3" AC CLASS D1
- 9 COLD PLANE EDGES 18" WITH 1/2" WEDGE CUT, RESURFACE WITH 1/2" AC CLASS D1
- 10 CONST A2 CB & GTR (VAR CF, W=12") PER APWA STD 120-1



NOTES:

1. THIS PLAN ACCURATE FOR GRADING AND PAVING PLAN ONLY.
2. PROVISIONS SHALL BE MADE FOR CONTRIBUTORY DRAINAGE AT ALL TIMES.
3. CONTRACTOR SHALL SET GRADE STAKES FOR ALL NEW CONSTRUCTION ITEMS SHOWN HEREON.



PLANS PREPARED BY				JOHN M. CRUIKSHANK DATE 9/30/05 EXP. DATE	
PROFESSIONAL ENGINEER				REGISTERED ENGINEER No. 50192 State of Calif.	
SOUTH END OF PARKING LOT, OTHER ON SITE			ROBERT E. RYAN COMMUNITY PARK RANCHO PALOS VERDES, CA 90275		
RYAN PARK IMPROVEMENTS			SHEET 6 OF 7 SHEETS INDEX NUMBER		
PROJECT NO. 32714			SCALE 1" = 20'		
DATE 10/28/02			JOB CAPTAIN JCS		
DRAWN BY JCS			CHECKED BY JMC		
SHEET NO. C-6			SHTS		