



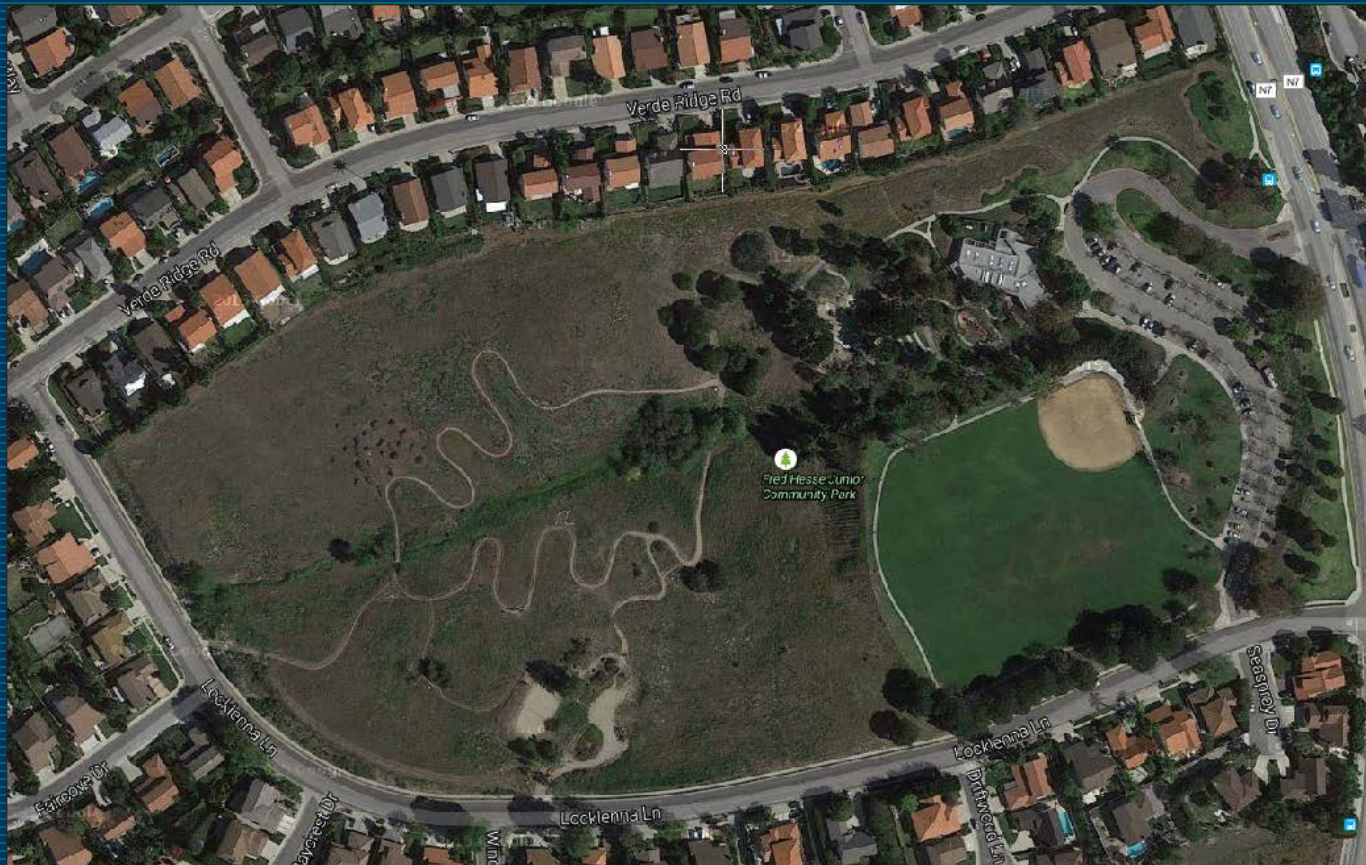
Lower Hesse Park Improvements Update May 16, 2017

City of Rancho Palos Verdes





Current Condition





Background

- Upper Hesse Park opened in 1983 at a cost of \$4 million
- 18 acre Lower Hesse Park not developed at that time
- Lower Hesse Park was improved with walking trails, a parking lot, and a volleyball court in 1999.
- Condition of Lower Hesse Park deteriorated



Background

- Variety of Designs Explored
 - Significant Public Outreach
 - Involvement of Pacific View HOA
 - Oct. 20 2015 Conceptual Plan Approved
 - Project architects Withers & Sandgren hired
-



Background

- Current Project Components
 - Xeriscape/drought tolerant landscape
 - Drip Irrigation
 - Improved Parking Lot
 - Native Plantings
 - Improved trails
 - Picnic Nodes
 - Rock-filled drainage area and boulder features

 - Sand volleyball court only active element



Lower
Hesse
Park

Current
Design



Cost Estimate/Schedule

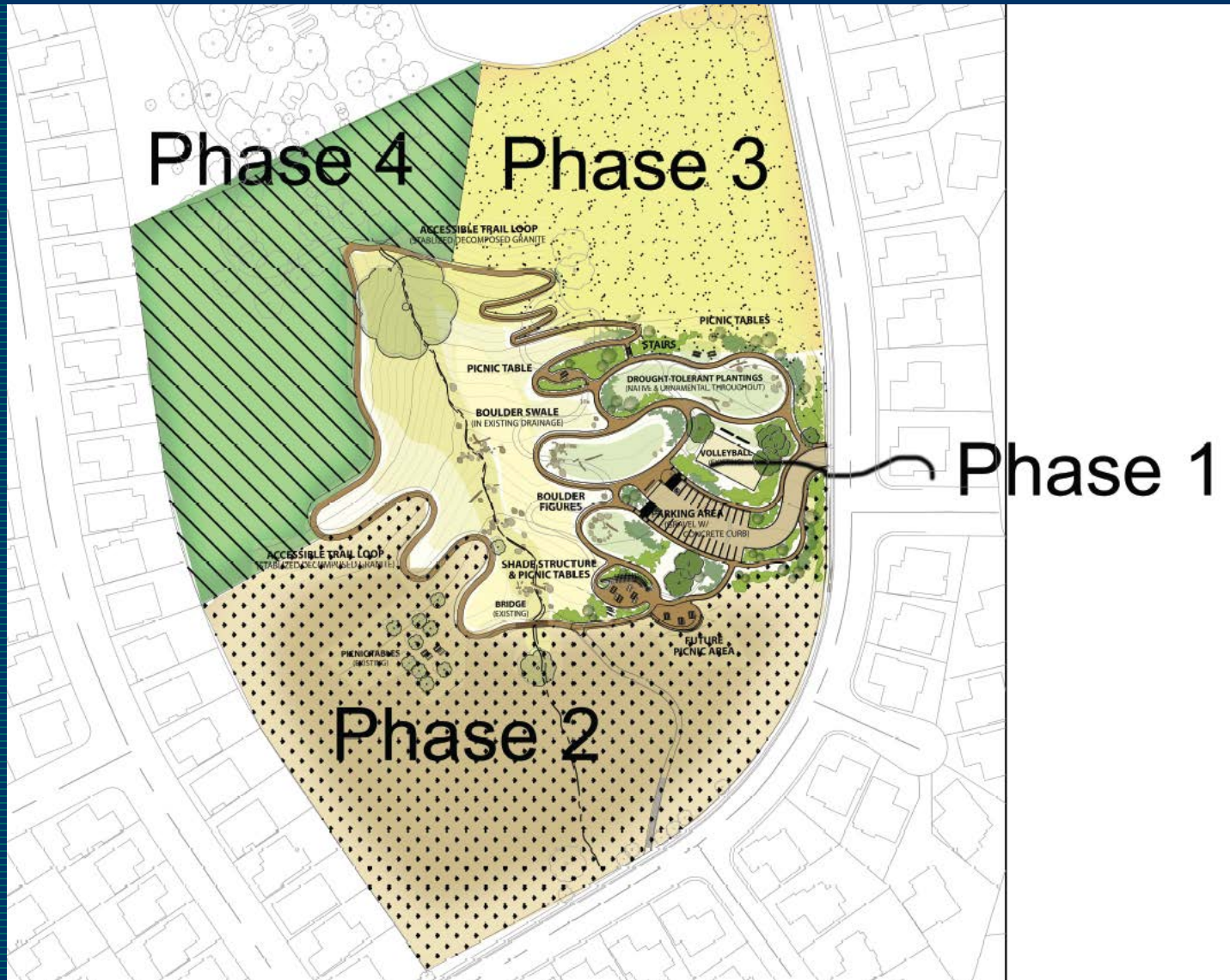
- Preliminary Cost Estimate: \$841,000
- Budgeted Amount: \$927,575
 - ✓ \$427,575 CIP Reserves
 - ✓ \$200,000 Quimby Fees
 - ✓ \$300,000 LA County Measure A Grant
- Project currently in bid process to determine actual project costs
- Tentative Project Completion: Jan. 2018



Questions?



Potential Future Phases












Conceptual Design Approved by Council: October 2015



Option 1 Legend:

- | | | | |
|---|---|---|--------------------------------|
|  | Hydroseeding |  | Native Plants/Landscape buffer |
|  | Xeriscape/drought tolerant |  | Trails |
|  | Parking Lot |  | Rock Fill/Drainage Area |
|  | Open Air Resting Opportunities/Picnic Nodes | | |