



This is a detailed map of Southern California, specifically the Los Angeles, San Gabriel Mountains, and San Bernardino areas. The map shows a dense network of roads, including major freeways like the 5, 10, 15, 210, 60, 78, and 91. Major cities and towns are labeled, such as Los Angeles, Lancaster, Palmdale, San Gabriel, San Bernardino, San Dimas, and San Jose. The San Gabriel Mountains are prominently featured in the center, with various peaks and ridges marked. The Pacific Ocean is visible on the left side. The map also shows several reservoirs, including Lake Arrowhead, Lake San Dimas, and Lake San Jose. The map is oriented with North at the top, and the county boundaries are indicated by dashed lines.

## LOCATION MAP

<u>SHT. NO.</u>	<u>DESCRIPTION</u>
1	TITLE SHEET
2	CONSTRUCTION NOTES AND TYPICAL SECTIONS
3	PALOS VERDES DR. SOUTH - PLAN & PROFILE - STA. 267+11.85 TO STA. 276+35.77
4	PALOS VERDES DR. SOUTH - PLAN & PROFILE - STA. 276+35.77 TO STA. 283+30.57
5	STRIPING PLAN

The existence and location of any underground utility pipes or structures shown on these plans were obtained by a search of available records. To the best of our knowledge there are no existing utilities except those shown on this map. The contractor is required to take precautionary measures to protect the utility lines shown, and any other lines not of record or shown on these plans. The contractor further assumes all liability and responsibility for the utility pipes, conduits or structures shown or not shown on these plans. The contractor shall pothole all existing utilities to verify their locations, and any discrepancy between found locations and the plans must be reported immediately to the owner. If the contractor brings to light an excavation the contractor shall call toll free 800-422-4133 to verify the underground location of gas and telephone lines. The contractor shall also call Mr. Ray Cummings of the General Telephone Company at 805-948-4871 so they can mark the location of underground telephone lines. The contractor agrees that he shall assume sole and complete responsibility for the job site condition during the course of construction of this project, including the safety of all persons and property, and that this requirement shall apply continuously and not be limited only to normal working hours. The contractor also agrees to defend, indemnify and hold the owner and engineer harmless from all liability, real or alleged, in connection with the performance of work on this project, excepting for liability arising from the sole negligence of the owner or engineer.

Date \_\_\_\_\_



CHECKED

DESIGNED

DRAFTED



A key map showing the location of the study area. The map includes a compass rose pointing North, a scale bar, and a road network. The main road is labeled 'PALOS VERDES DRIVE'. Other roads shown are 'SCHUMER DRIVE', 'CONQUEROR DRIVE', 'MUTILLUS DRIVE', 'FORESTAL DRIVE', and 'OCEAN TITALLS DRIVE'. The map also indicates 'STREET-SHEET 3 STRIPPING-SHEET 3' and 'STREET-SHEET 4 STRIPPING-SHEET 5'.

SCALE: 1"=300'

1. A permit shall be obtained and fees paid for construction inspection to the Department of Public Works 30940 Hawthorne Boulevard, Rancho Palos Verdes, at least 72 hours prior to starting work under this contract.
2. The Contractor shall contact the City of Rancho Palos Verdes to arrange for an acceptable construction start date.
3. A permit must be obtained from the Los Angeles County Department of Public Works, at (626) 458-3129 for all storm drain construction.
4. All work shall conform to the "Standard Plans and Specifications for Public Works Construction" (two books) supplemented with the Los Angeles County Department of Public Works Standard Plans 1995 edition.
5. Work in public streets, once begun, shall be prosecuted to completion without delay so as to provide minimum inconvenience to adjacent property owners and to the traveling public.
6. The contractor shall take all necessary and proper precautions to protect adjacent properties from all damage that may occur from storm water runoff and/or deposition of debris resulting from any and all work in connection with subdivision construction.
7. There shall be no above-ground obstruction in any portion of the sidewalk except where the width, exclusive of top of curb, is 50 inches or greater.
8. Construct walk returns and transitions per L.A. County Dept. of Public Works Standard Plan 1130-0.
9. Where sidewalks are adjacent to curb, construct residential driveways per APWA Standard Plan 110-1 unless otherwise shown. Prior to forming curb and gutter, the contractor shall confer with the City to secure approval for all dimensions and widths.
10. Construct street name signs per locations as shown on plan. Contact the City for standard plans and specifications. Street name signs shall be posted prior to occupancy of buildings.
11. Thickness of base materials will be determined by the soil test. Subdivider's engineer shall request tests by the Department of Public Works after the streets have been rough graded. Plans must be revised to show actual base.
12. Processed Miscellaneous Base may be used under curb and gutter in lieu of Crushed Aggregate Base.
13. Processed Miscellaneous Base or Select Material with expansion of 3% or less by the Department of Public Works CBR soil test may be used in lieu of Crushed Aggregate Base under walks.
14. Driveways shall be four (4) feet gutter and four (4) feet gutter plus local depressions (to be used whenever plans include four (4) feet gutter local depressions).
15. All utility lines shall be underground per Section 21.24.40 of Title 21 of the Los Angeles County Code.
16. No driveways should be located within 25 feet upstream of catch basin when grade is greater than 6%.
17. For construction of P.C.C. curbs, gutters, driveways and sidewalks shall be in accordance with APWA Standard Plan No. 112-C.
18. The latest revised standard plan or drawing shall be used unless otherwise specifically noted.

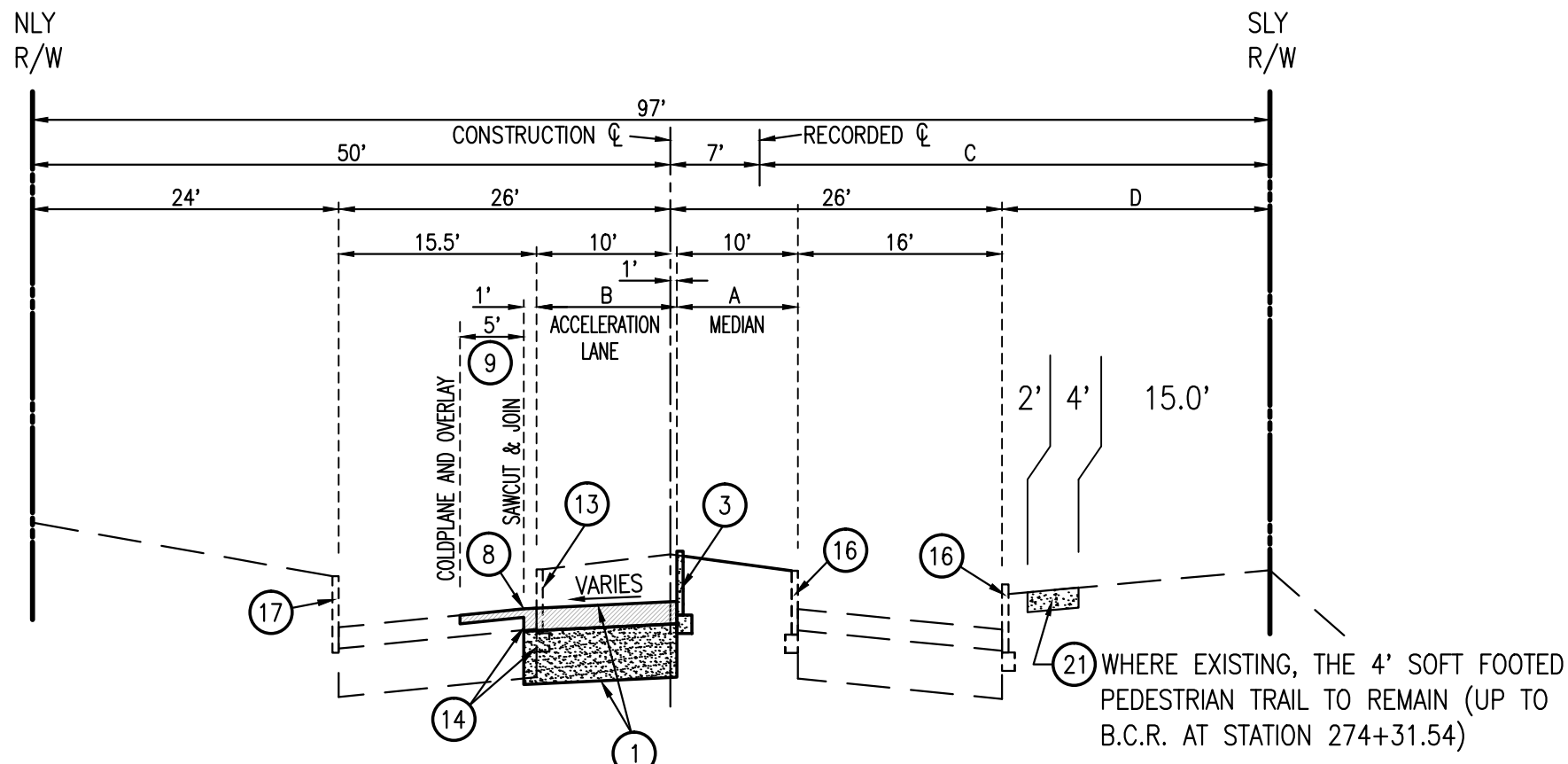
1. Traffic control shall be in accordance with the provisions of the latest edition of the "Work Area Traffic Control Handbook" (WATCH) and at the direction of the Director of Public Works.
2. Two lanes of traffic (one each direction) shall be open/restored between the hours of 5:00 p.m. to 8:00 a.m. Monday thru Friday and all day Saturday, Sunday and Holidays.
3. One lane of traffic for two directional flow will be allowed between the hours of 8:00 a.m. to 5:00 p.m. Monday thru Friday, with two flaggers, one for each direction of traffic.

## A. NOTES:

1. Eroded sediments and other pollutants must be retained on site and may not be transported from the site via sheet flow, swales, area drains, natural drainage courses, or wind.
2. Stockpiles of earth and other construction related materials must be protected from being transported from the site by the forces of wind or water.
3. Fuels, oils, solvents, and other toxic materials must be stored in accordance with their listing and are not to contaminate the site or its surface waters. All approved storage containers are to be protected from the weather. Spills must be cleaned up immediately and disposed of in a proper manner. Spills may not be washed into the drainage system.
4. Excess or waste concrete may not be washed into the public way or any other drainage system. Provisions shall be made to retain concrete wastes on site until they can be disposed of as solid waste.
5. Fresh and construction related solid wastes must be deposited into a covered receptacle to prevent contamination of rainwater and dispersal by wind.
6. Sediments and other materials may not be tracked from the site by vehicle traffic. The construction entrance roadways must be stabilized so as to inhibit sediments from being deposited into the public way. Accidental deposits must be swept up immediately and may not be washed down by rain or other means.
7. Any slopes with disturbed soils or denuded of vegetation must be stabilized so as to inhibit erosion by wind and water.

- |         |  |   |
|---------|--|---|
| B.      | <p>The following BMP's are all outlined in, but not limited to, the Best Management Practice Handbook, California Stormwater Quality Task Force, Sacramento, California 1993, or the latest revised edition, may apply during construction (additional measures may be required if deemed appropriate by inspector):</p> |   |
| CA001 - | DEWATERING OPERATIONS  | ES002 - PRESERVATION OF EXISTING VEGETATION |
| CA002 - | PAVING OPERATIONS  | ES010 - SEEDING AND PLANTING                |
| CA010 - | MATERIAL DELIVERY AND STORAGE  | ES011 - MULCHING                            |
| CA011 - | MATERIAL USE   | ES020 - GEOTEXTILES AND MATS                |
| CA012 - | SPILL PREVENTION AND CONTROL   | ES021 - DUST CONTROLS                       |
| CA020 - | SOLID WASTE MANAGEMENT   | ES022 - TEMPORARY STREAM CROSSING           |
| CA021 - | HAZARDOUS WASTE MANAGEMENT   | ES023 - CONSTRUCTION ROAD STABILIZATION     |
| CA022 - | CONTAMINATED SOIL MANAGEMENT   | ES024 - STABILIZED CONSTRUCTION ENTRANCE    |
| CA023 - | CONCRETE WASTE MANAGEMENT  | ES042 - SLOPE ROUGHENING/TERRACING          |
| CA030 - | VEHICLE AND EQUIPMENT CLEANING   | ES050 - SILT FENCE                          |
| CA031 - | VEHICLE AND EQUIPMENT LABELING   | ES051 - STRAW OR LOG BARRIERS               |
| CA032 - | VEHICLE AND EQUIPMENT MAINTENANCE  | ES052 - SAND BAG BARRIER                    |
| CA040 - | EMPLOYEE/SUBCONTRACTOR TRAINING  | ES053 - BRUSH OR ROCK FILTER                |
| ES001 - | SCHEDULING   | ES054 - STORM DRAIN INLET PROTECTION        |

NO.	REVISION	REVISED BY	APPROVED BY	DATE	<b>CITY of RANCHO PALOS VERDES</b> <b>STREET IMPROVEMENTS PLAN</b> LOCATION and KEY MAPS, BENCH MARK INDEX TO PROJECT DRAWINGS PRIVATE ENGINEERS NOTICE TO CONTRACTORS STORMWATER POLLUTION CONTROL REQUIREMENTS GENERAL NOTES and TRAFFIC CONTROL REQUIREMENTS <b>TRACT No. 50666</b> <b>SHEET 1 OF 5</b>



FROM STATION 272+18.78 TO 273+00.00  
NORTHERLY MEDIAN CURB LINE VARIES FROM 10.5' LEFT TO 0.5' RIGHT OF CL  
A = VARIES FROM 20.5' TO 9.5', B = VARIES FROM 0.0' TO 11.0'  
C = 47.0', D=21.0'

FROM STATION 273+00.00 TO 273+78.07  
NORTHERLY MEDIAN CURB LINE IS UNIFORM AT 0.5' RIGHT OF CL  
A = 9.5', B=11.0', C=47.0', D=21.0'

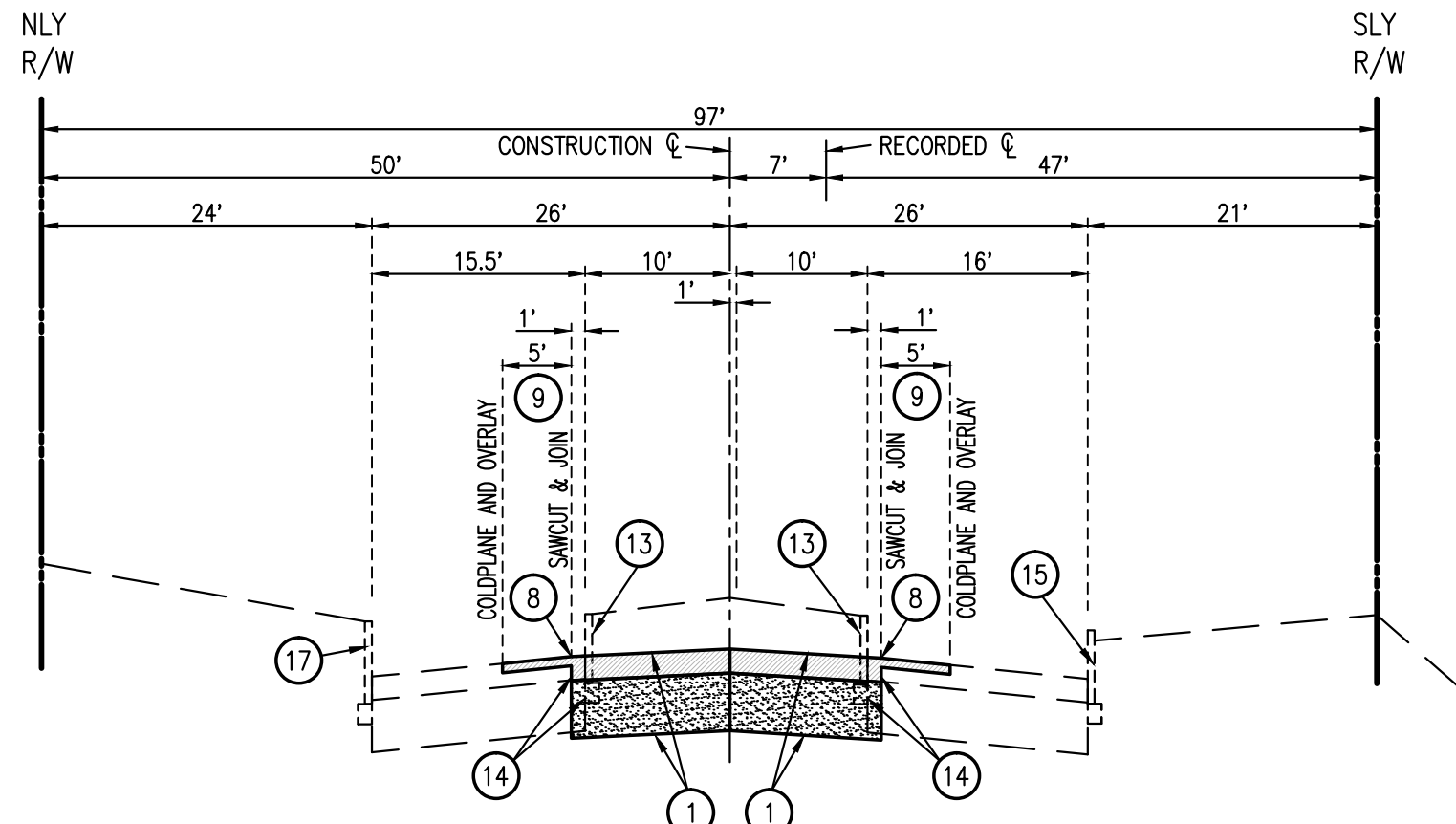
FROM STATION 273+78.07 TO 274+31.58  
NORTHERLY MEDIAN CURB LINE VARIES FROM 0.5' RIGHT TO 6.6' RIGHT OF CL  
A = VARIES FROM 9.5' TO 4.0', B = VARIES FROM 11.0' TO 17.0'  
C = 47.0', D=21.0'

FROM STATION 275+18.87 TO 275+58.38  
NORTHERLY MEDIAN CURB LINE VARIES FROM 6.4' RIGHT TO 0.5' RIGHT OF CL  
A = VARIES FROM 4.0' TO 9.6', B = VARIES FROM 16.8' TO 11.0'  
C = 57.0', D=31.0'

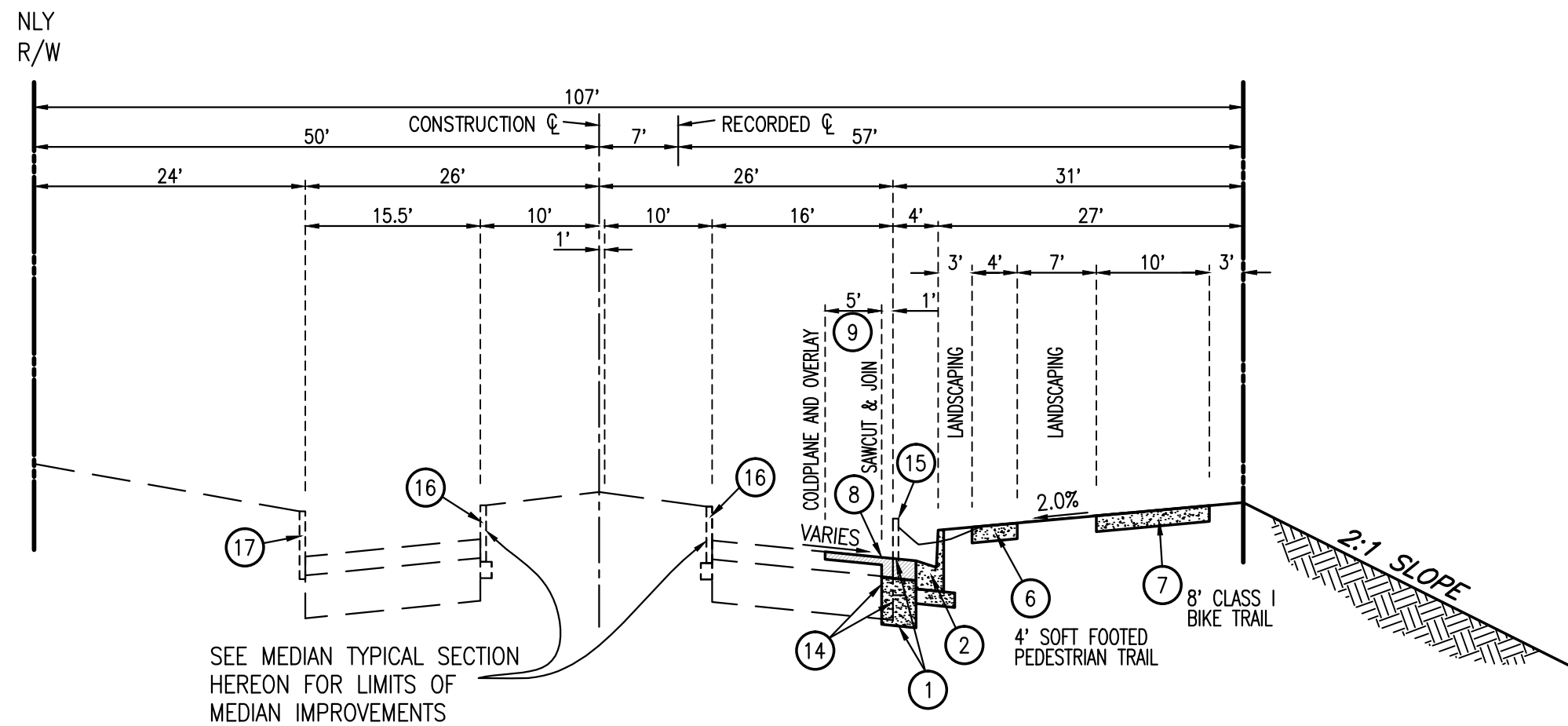
FROM STATION 275+58.38 TO 276+68.87  
NORTHERLY MEDIAN CURB LINE IS UNIFORM AT 0.5' RIGHT OF CL  
A = 9.5', B=11.0', C=47.0', D=21.0'

FROM STATION 276+68.87 TO 277+90.00  
NORTHERLY MEDIAN CURB LINE VARIES FROM 0.5' RIGHT TO 10.5' LEFT OF CL  
A = VARIES FROM 9.5' TO 20.5', B = VARIES FROM 11.0' TO 0.0'  
C = 57.0', D=31.0'

**MEDIAN TYPICAL SECTION**  
**PALOS VERDES DRIVE SOUTH**  
N.T.S.  
FROM STA. 272+148.78 TO STA. 277+90.00



**TYPICAL SECTION AT INTERSECTION**  
**PALOS VERDES DRIVE SOUTH**  
N.T.S.  
FROM STA. 274+31.58 TO STA. 275+18.87



**SOUTHERLY CURB TYPICAL SECTION**  
**PALOS VERDES DRIVE SOUTH**  
N.T.S.  
FROM STA. 275+31.92 TO STA. 274+31.54

**CONSTRUCTION NOTES**

1. CONST. 1.5" A.R.H.M. ON 3" A.C. ON 11" CRUSHED MISCELLANEOUS BASE
2. CONST. 6" CURB AND 24" GUTTER BARRIER PER CITY STANDARDS
3. CONST. CONCRETE CURB PER S.P.P.W.C. STD. PLAN 120-2, A1-150(6)
4. CONSTRUCT 6" THICK P.C.C. WALK (SEE GENERAL NOTES 8 & 9 ON SHEET 1).
5. CONST. CURB RAMP PER S.P.P.W.C. STD. PLAN 111-3, TYPE PER PLAN.
6. CONST. 4' WIDE DECOMPOSED GRANITE WALK, 4" THICK WITH 2"x4" REDWOOD HEADER ON BOTH SIDES
7. CONST. 3" A.C. PAVEMENT FOR BIKE TRAIL
8. SAW CUT EXISTING A.C. PAVEMENT FOR SQUARE JOIN.
9. COLD PLANE 1.5" MIN, 5' WIDE STRIP MIN. AND OVERLAY WITH 1.5" MIN. A.R.H.M.
10. CONST. 6" A.C. CURB PER S.P.P.W.C. STD. PLAN 121-2 TYPE D2-6 (150).
11. CONST. LOCAL DEPRESSION PER A.P.W.A. STD. PLAN 313-1, CASE A, H=2", H1=2-1/2"
12. PROPOSED CURB OPENING CATCH BASIN PER S.P.P.W.C. STD. PLAN 300-3, W=10', V=5'-0", VU=3'-10", B=3'-8"
13. REMOVE EXISTING CURB OR CURB AND GUTTER.
14. REMOVE EXISTING A.C. PAVEMENT AND BASE AND PULVERIZE TO 2" OR LESS THEN INCORPORATE IT INTO THE SUBGRADE.
15. REMOVE EXISTING A.C. BERM
16. EXISTING CURB AND/OR CURB AND GUTTER TO REMAIN
17. EXISTING A.C. BERM TO REMAIN
18. EXISTING CATCH BASIN TO REMAIN
19. EXISTING 30" R.C.P. TO REMAIN
20. EXISTING HEAD WALL TO BE REMOVED PER MTD 1472-5
21. EXISTING 4' SOFT-FOOTED TRAIL TO REMAIN

PREPARED BY:  
**SAWAYA ENGINEERING CONSULTANTS, INC**  
642 S. PATH-FINDER TRAIL, ANAHEIM, CA 92807  
(714) 974-9586 Tel (714) 974-9586 Fax  
CIVIL ENGINEERING / LAND PLANNING / SURVEYING

CHECKED
DESIGNED
DRAFTED



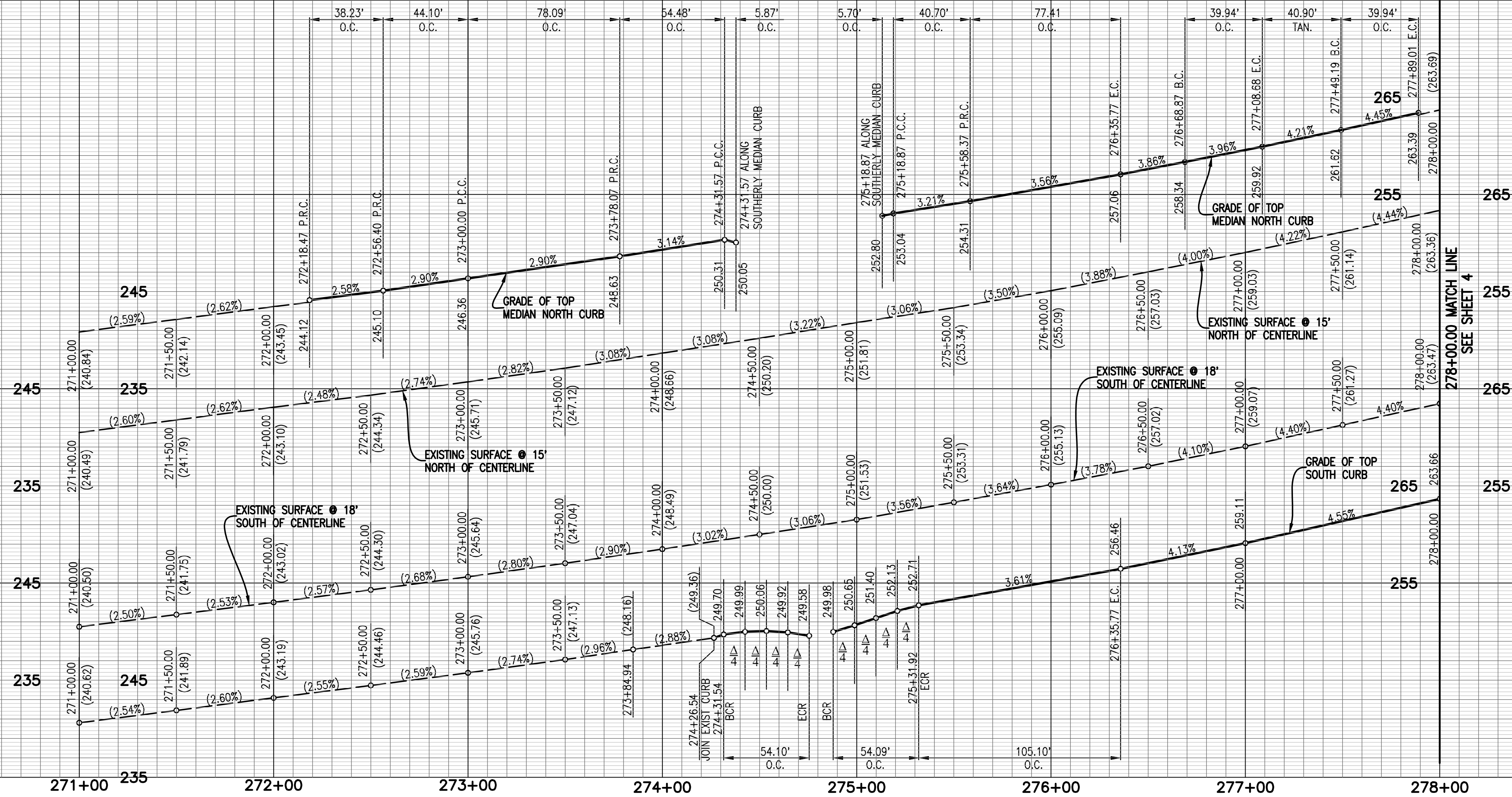
APPROVED  
CITY of RANCHO PALOS VERDES

Michael Throne, R.C.E. 46469 Exp. 6-30-19  
DIRECTOR OF PUBLIC WORKS

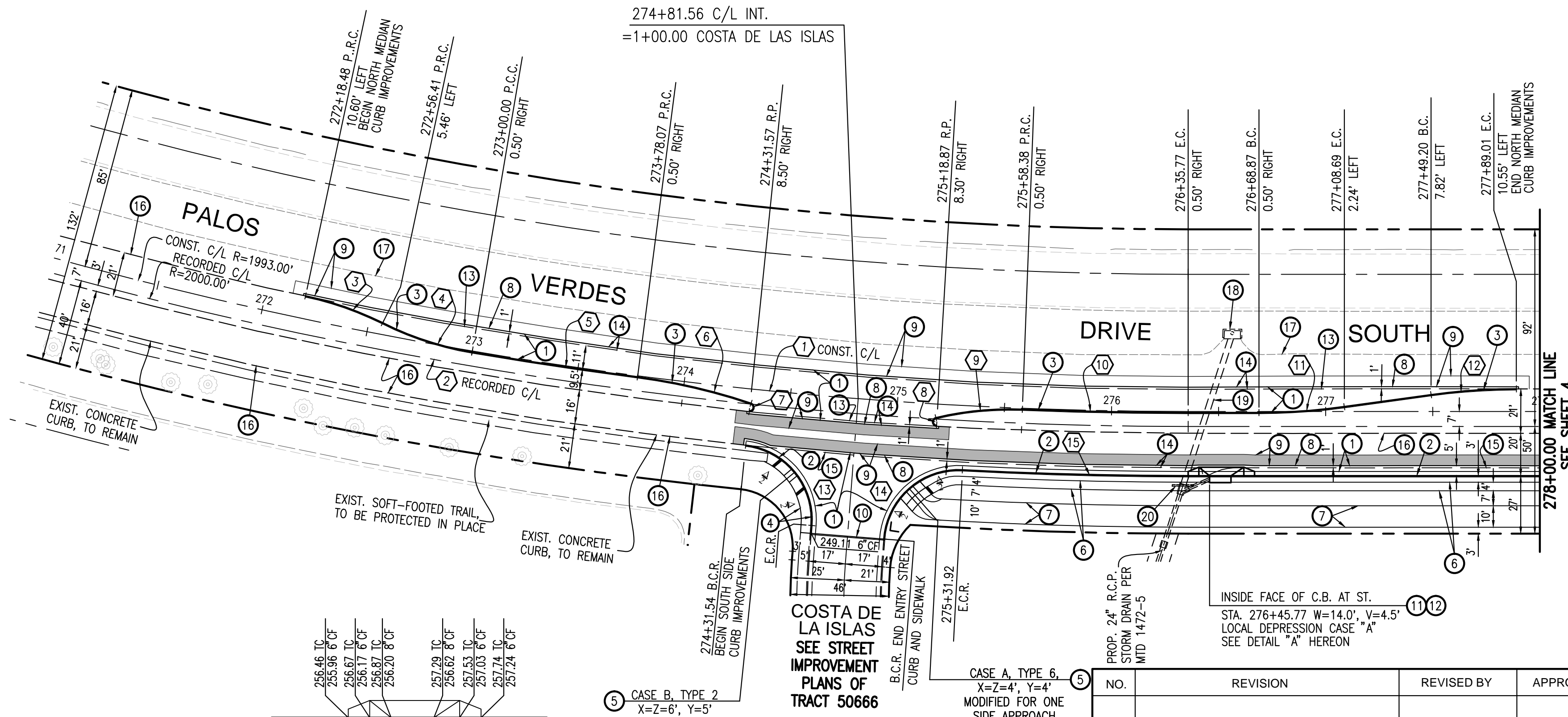
NO.	REVISION	REVISED BY	APPROVED BY	DATE

CITY of RANCHO PALOS VERDES	
STREET IMPROVEMENTS PLAN	
CONSTRUCTION NOTES TYPICAL SECTION	
TRACT No. 50666	SHEET 2 OF 5

SCALE HOR. 1" = 40'  
VERT. 1" = 4'



CURVE TABLE			
Δ	DELTA	RADIUS	LENGTH
1	26°54'07"	1993.00'	935.77'
2	27°58'09"	2000.00'	976.31'
3	14°36'07"	150.00'	38.23'
4	16°50'48"	150.00'	44.10'
5	2°14'40"	1993.50'	78.09'
6	11°21'03"	275.00'	54.48'
7	168°05'23"	2.00'	5.87'
8	163°20'21"	2.00'	5.70'
9	15°32'54"	150.00'	40.71'
10	2°13'29"	1993.50'	77.41'
11	7°52'23"	290.65'	39.94'
12	7°52'23"	290.63'	39.94'
13	87°48'47"	35.00'	53.64'
14	88°33'07"	35.00'	54.09'
15	2°59'07"	2023.00'	105.40'



### CONSTRUCTION NOTES

- CONST. 1.5" A.R.H.M. ON 3" A.C. ON 11" CRUSHED MISCELLANEOUS BASE
- CONST. 6" CURB AND 24" GUTTER BARRIER PER CITY STANDARDS
- CONST. CONCRETE CURB PER S.P.P.W.C. STD. PLAN 120-2, A1-150(6)
- CONSTRUCT 6" THICK P.C.C. WALK (SEE GENERAL NOTES 8 & 9 ON SHEET 1).
- CONST. CURB RAMP PER S.P.P.W.C. STD. PLAN 111-3, TYPE PER PLAN.
- CONST. 4" WIDE DECOMPOSED GRANITE WALK, 4" THICK WITH 2"x4" REDWOOD HEADER ON BOTH SIDES
- CONST. 3" A.C. PAVEMENT FOR BIKE TRAIL
- SAW CUT EXISTING A.C. PAVEMENT FOR SQUARE JOIN.
- COLD PLANE 2" MIN. 5' WIDE STRIP MIN. AND OVERLAY WITH 2" MIN. A.C.
- CONST. 6" A.C. CURB PER S.P.P.W.C. STD. PLAN 121-2 TYPE D2-6 (150).
- CONST. LOCAL DEPRESSION PER A.P.W.A. STD. PLAN 313-1, CASE A, H=2", H1=2-1/2"
- PROPOSED CURB OPENING CATCH BASIN PER S.P.P.W.C. STD. PLAN 300-3, W=14", V=4'-6", VU=3'-10", B=3'-8"
- REMOVE EXISTING CURB OR CURB AND GUTTER.
- REMOVE EXISTING A.C. PAVEMENT AND BASE AND PULVERIZE TO 2" OR LESS THEN INCORPORATE IT INTO THE SUBGRADE.
- REMOVE EXISTING A.C. BERM
- EXISTING CURB AND/OR CURB AND GUTTER TO REMAIN
- EXISTING A.C. BERM TO REMAIN
- EXISTING CATCH BASIN TO REMAIN
- EXISTING 30" R.C.P. TO REMAIN
- EXISTING HEAD WALL TO BE REMOVED PER MTD 1472-5
- EXISTING 4" SOFT-FOOTED TRAIL TO REMAIN

SCALE: 1" = 40'

PREPARED BY:  
**SAWAYA ENGINEERING CONSULTANTS, INC.**  
642 S. PATHFINDER TRAIL, ANAHEIM, CA 92807  
(714) 974-8548 FAX (714) 974-8556 FAX  
CIVIL ENGINEERING / LAND PLANNING / SURVEYING

CHECKED  
DESIGNED  
DRAFTED



CATCH BASIN DETAIL "A"  
SCALE: 1" = 20'

APPROVED  
CITY of RANCHO PALOS VERDES

Michael Throne, R.C.E. 46469 Exp. 6-30-19  
DIRECTOR OF PUBLIC WORKS

NO.	REVISION	REVISED BY	APPROVED BY	DATE

**CITY of RANCHO PALOS VERDES**  
**STREET IMPROVEMENTS PLAN**

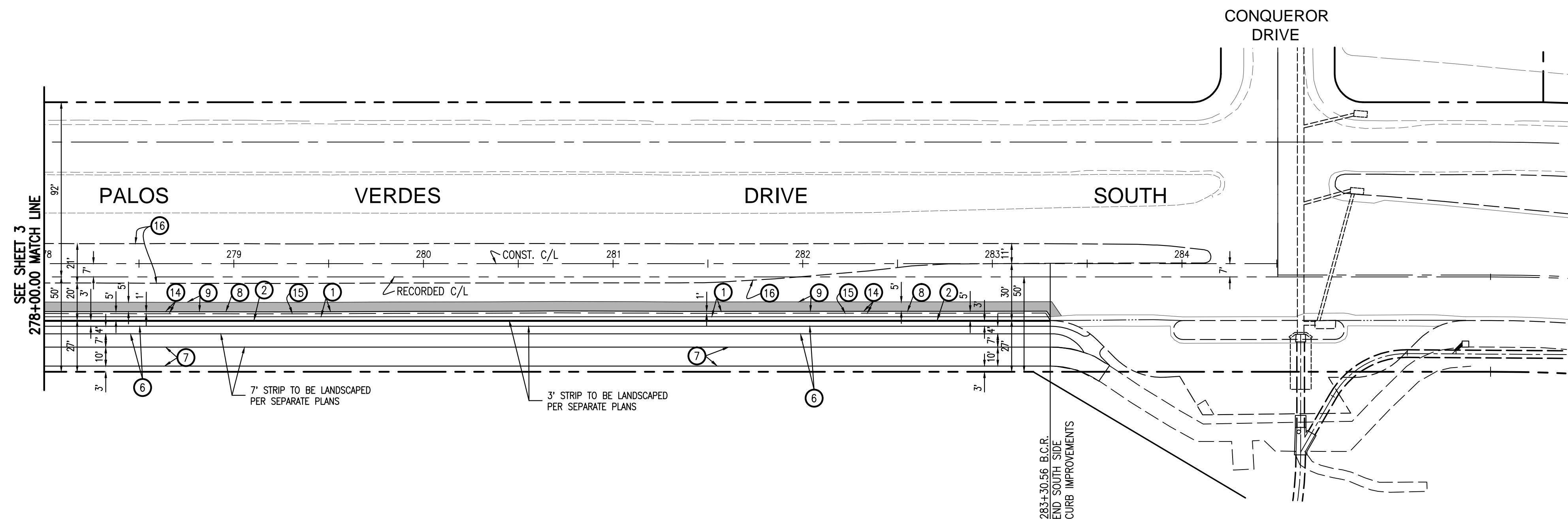
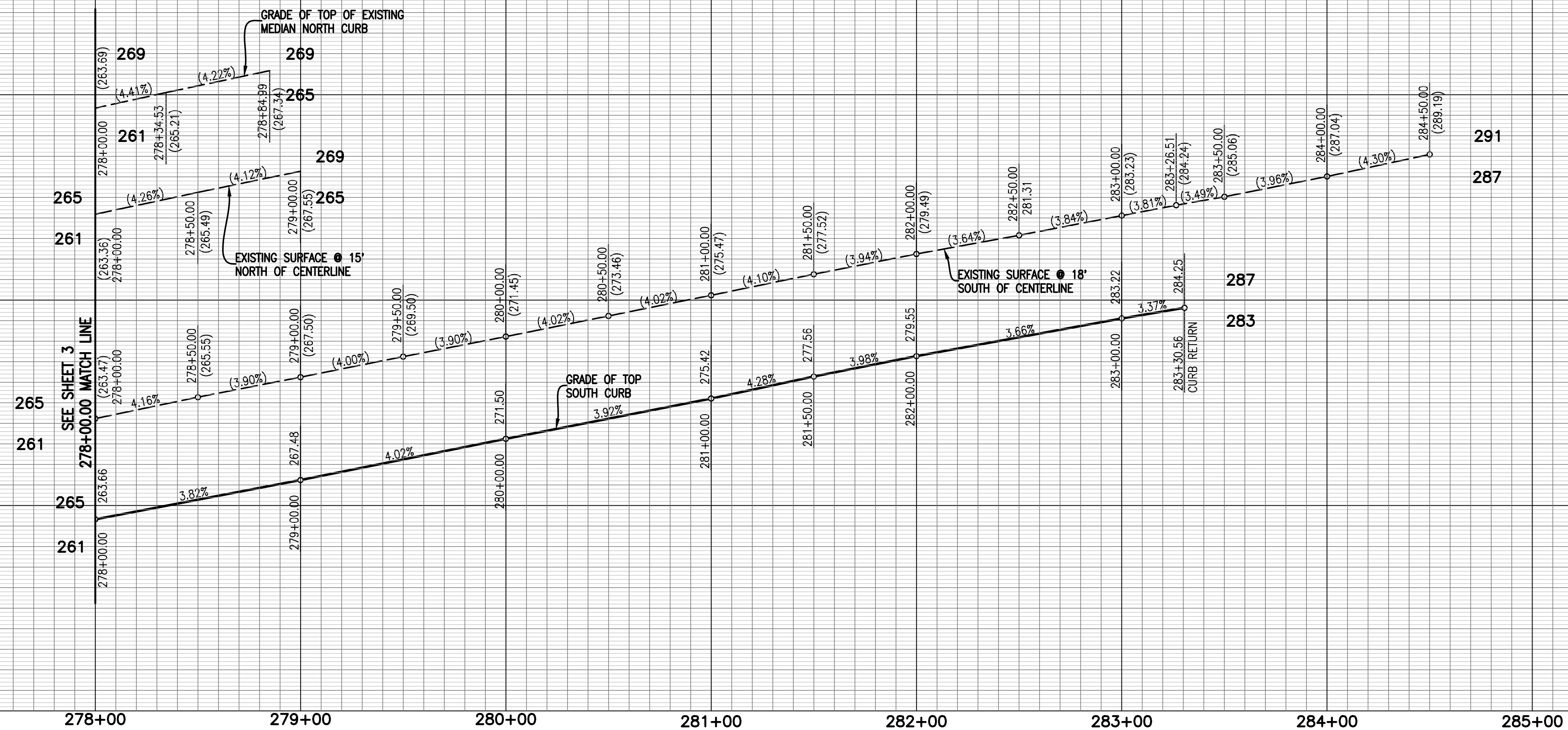
**PLAN AND PROFILE**  
**PALOS VERDES DRIVE SOUTH**  
**FROM STA. 272+18.48 TO STA. 278+00.00**

TRACT No. 50666

SHEET 3 OF 5

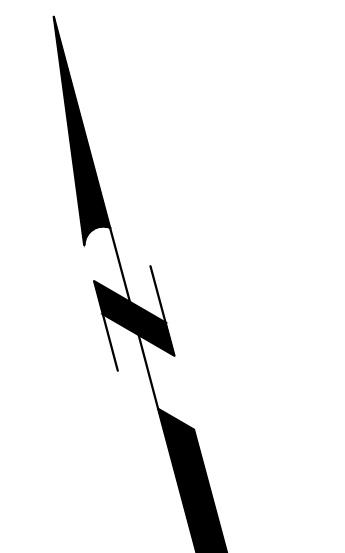


SCALE: HOR. 1" = 40'  
VERT. 1" = 4'



CONSTRUCTION NOTES

- CONST. 1.5" A.R.H.M. ON 3" A.C. ON 11" CRUSHED MISCELLANEOUS BASE
- CONST. 6" CURB AND 24" GUTTER BARRIER PER CITY STANDARDS
- CONST. CONCRETE CURB PER S.P.P.W.C. STD. PLAN 120-2, A1-150(6)
- CONSTRUCT 6" THICK P.C.C. WALK (SEE GENERAL NOTES 8 & 9 ON SHEET 1).
- CONST. CURB RAMP PER S.P.P.W.C. STD. PLAN 111-3, TYPE PER PLAN.
- CONST. 4" WIDE DECOMPOSED GRANITE WALK, 4" THICK WITH 2"x4" REDWOOD HEADER ON BOTH SIDES
- CONST. 3" A.C. PAVEMENT FOR BIKE TRAIL
- SAW CUT EXISTING A.C. PAVEMENT FOR SQUARE JOIN.
- COLD PLANE 2" MIN. 5' WIDE STRIP MIN. AND OVERLAY WITH 2" MIN. A.C.
- CONST. 6" A.C. CURB PER S.P.P.W.C. STD. PLAN 121-2 TYPE D2-6 (150).
- CONST. LOCAL DEPRESSION PER A.P.W.A. STD. PLAN 313-1, CASE A, H=2", H1=2'-1/2"
- PROPOSED CURB OPENING CATCH BASIN PER S.P.P.W.C. STD. PLAN 300-3, W=10', V=5'-0", VU=3'-10", B=3'-8"
- REMOVE EXISTING CURB OR CURB AND GUTTER.
- REMOVE EXISTING A.C. PAVEMENT AND BASE AND PULVERIZE TO 2" OR LESS THEN INCORPORATE IT INTO THE SUBGRADE.
- REMOVE EXISTING A.C. BERM
- EXISTING CURB AND/OR CURB AND GUTTER TO REMAIN
- EXISTING A.C. BERM TO REMAIN
- EXISTING CATCH BASIN TO REMAIN
- EXISTING 30" R.C.P. TO REMAIN
- EXISTING HEAD WALL TO BE REMOVED PER MTD 1472-5
- EXISTING 4" SOFT-FOOTED TRAIL TO REMAIN



SCALE: 1"=40'

PREPARED BY:

**SAWAYA ENGINEERING CONSULTANTS, INC.**

642 S. PATHFINDER TRAIL, ANAHEIM, CA 92807  
(714) 974-8546 Tel (714) 974-8556 Fax  
CIVIL ENGINEERING / LAND PLANNING / SURVEYING

CHECKED

DESIGNED

DRAFTED



APPROVED

CITY of RANCHO PALOS VERDES

Michael Throne, R.C.E. 46469 Exp. 6-30-19  
DIRECTOR OF PUBLIC WORKS

DATE

NO.	REVISION	REVISED BY	APPROVED BY	DATE

**CITY of RANCHO PALOS VERDES**

**STREET IMPROVEMENTS PLAN**

**PLAN AND PROFILE**

**PALOS VERDES DRIVE SOUTH**

**FROM STA. 278+00.00 TO STA. 283+30.56**

TRACT No. 50666

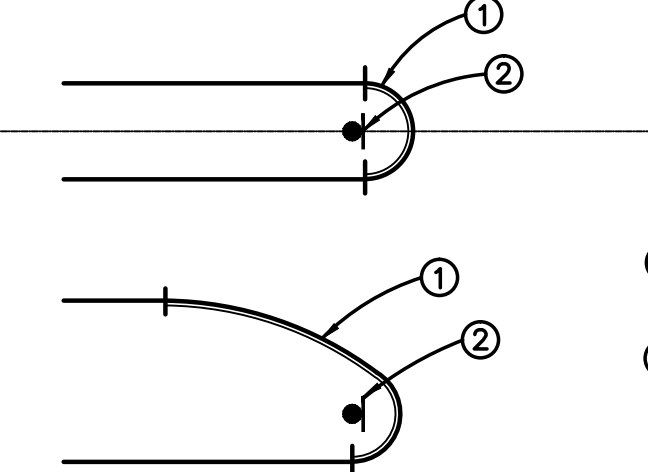
SHEET 4 OF 5

STRIPING GENERAL NOTES

1. TRAFFIC SIGNING AND STRIPING, CONDUIT AND PULL-BOXES SHALL CONFORM TO CALTRANS STANDARD PLANS AND SPECIFICATIONS DATED JULY 1992, CALTRANS MUTCD 2003 CALIFORNIA SUPPLEMENT, AND THESE PLANS.
2. INSTALL TWO-WAY BLUE REFLECTIVE MARKERS AT EVERY FIRE HYDRANT.
3. REMOVAL OF CONFLICTING STRIPING, LEGENDS AND RAISED PAVEMENT MARKERS SHALL BE BY WET SANDBLASTING.
4. ALL NEW SIGN POSTS SHALL BE 4"x4" REDWOOD.
5. NEW CROSSWALKS, LIMIT LINES, STOP LEGENDS, AND ANY OTHER PAVEMENT MARKINGS SHALL BE THERMOPLASTIC, EXCEPT THAT THE BIKE LANE LEGENDS AND ARROW SHALL BE PAINT. ALL OTHER STRIPING SHALL BE PAINT.
6. ALL NEW STREET NAME SIGNS SHALL BE WESTERN HIGHWAY PRODUCTS TYPE A9, SPECIALLY ADAPTED FOR THE CITY OF RANCHOS PALOS VERDES USE (WITH CITY LOGO APPEARING ON THE SIGN).
7. ALL NEW ADVANCED STREET NAME SIGNS SHALL BE WESTERN HIGHWAY PRODUCTS TYPE G7, SPECIALLY ADAPTED FOR THE CITY OF RANCHO PALOS VERDES USE (WITH CITY LOGO APPEARING ON SIGN).
8. COORDINATE SIGN LOCATIONS WITH LANDSCAPING PLAN.
9. RAISED PAVEMENT MARKERS OR OTHER RAISED BARRIERS SHALL NOT BE USED TO DELINEATE BIKE LANES.

NOTES

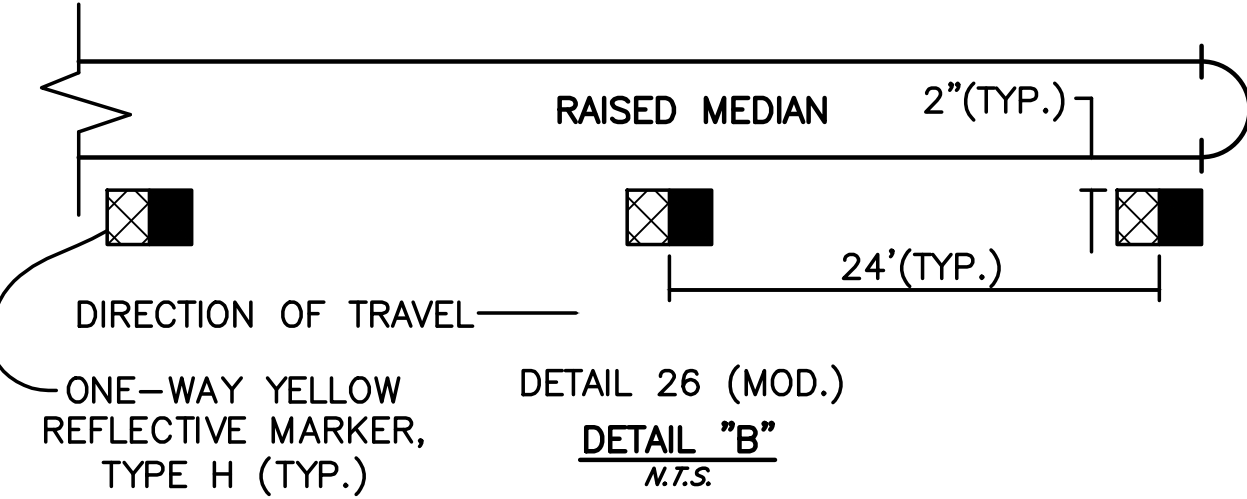
1. INSTALL DETAIL 26 (MOD) PER DETAIL "B"
2. INSTALL 8" PAINTED WHITE / DETAIL 38
3. INSTALL THERMOPLASTIC TYPE IV ARROW LEFT
4. INSTALL THERMOPLASTIC TYPE VI (R)
5. INSTALL SIGN AND POST AS SHOWN (USE STREET LIGHT POLE WHERE AVAILABLE)
6. INSTALL 6" PAINTED WHITE / DETAIL 39
7. INSTALL 4" PAINTED YELLOW SOLID AS SHOWN



DETAIL "A"

NOTES - DETAIL "A"

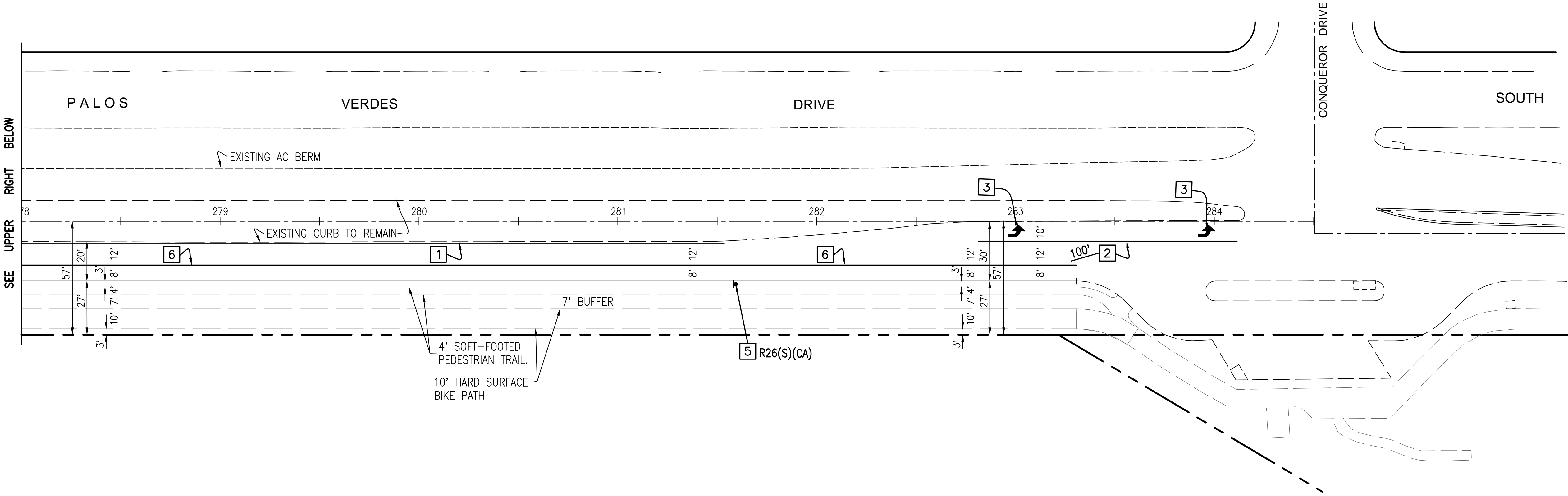
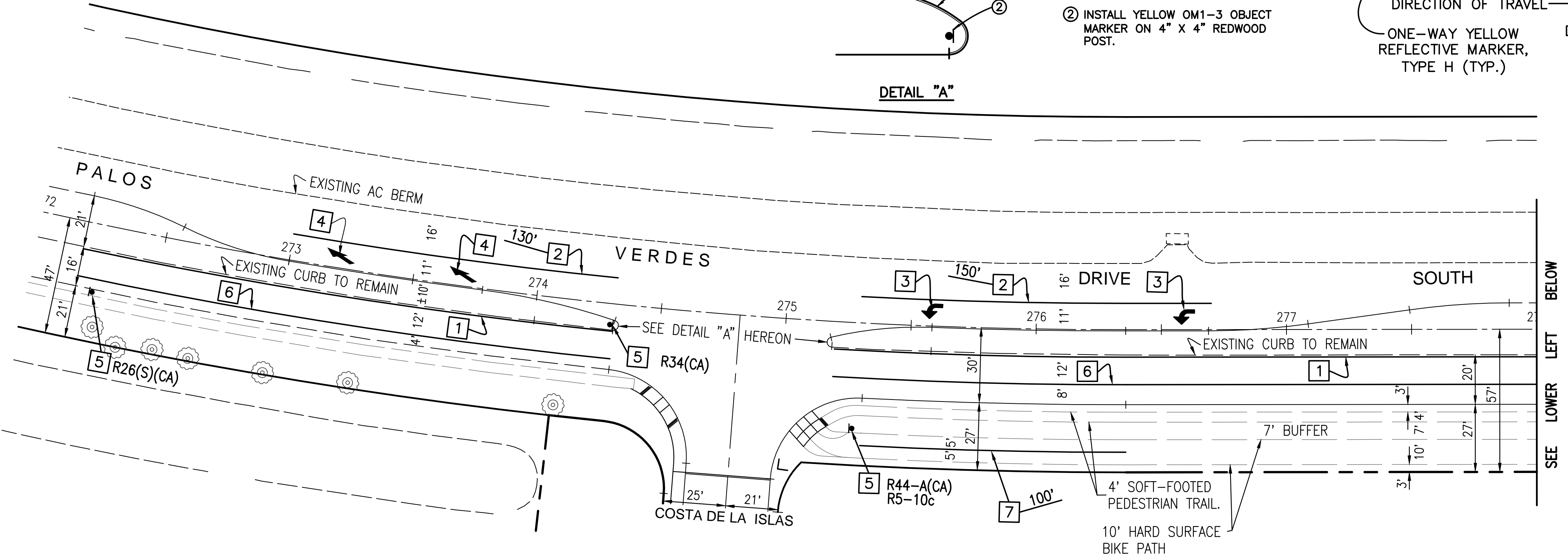
1. PAINT MEDIAN NOSE WITH HIGHLY REFLECTIVE WHITE TRAFFIC PAINT.
2. INSTALL YELLOW OM1-3 OBJECT MARKER ON 4" X 4" REDWOOD POST.



DETAIL 26 (MOD.)

DETAIL "B"

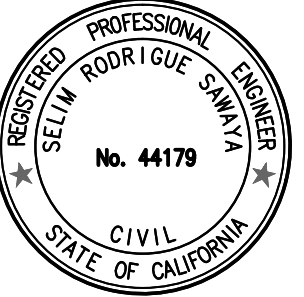
N.T.S.



PREPARED BY:

SAWAYA ENGINEERING CONSULTANTS, INC.  
842 S. PATHFINDER TRAIL, ANAHEIM, CA 92807  
(714) 974-8546 Tel (714) 974-8559 Fax  
CIVIL ENGINEERING / LAND PLANNING / SURVEYING

CHECKED  
DESIGNED  
DRAFTED



SCALE: 1"=30'  
GRAPHIC SCALE

APPROVED  
CITY of RANCHO PALOS VERDES

Michael Throne, R.C.E. 46469 Exp. 6-30-19  
DIRECTOR OF PUBLIC WORKS

NO.	REVISION	REVISED BY	APPROVED BY	DATE

CITY of RANCHO PALOS VERDES

STREET IMPROVEMENTS PLAN

SIGNING AND STRIPING  
PALOS VERDES DRIVE SOUTH

TRACT No. 50666

SHEET 5 OF 5