



## DEFINING PART I CRIMES

Part I Crimes are designated by the Federal Bureau of Investigation (FBI) as ten serious crimes that occur on a regular basis, have a uniformity of definition, large volume, and a high likelihood of being reported. Part I Crimes fall into two categories: violent crimes and property crimes. Violent crimes are murder, rape, aggravated assault, robbery, and human trafficking. Property Crimes are burglary, larceny, motor vehicle theft, and arson.

### The Difference Between Robbery, Burglary, and Theft

While they all entail property being stolen, robbery, burglary, and theft differ in how the item was stolen and where it was stolen from.

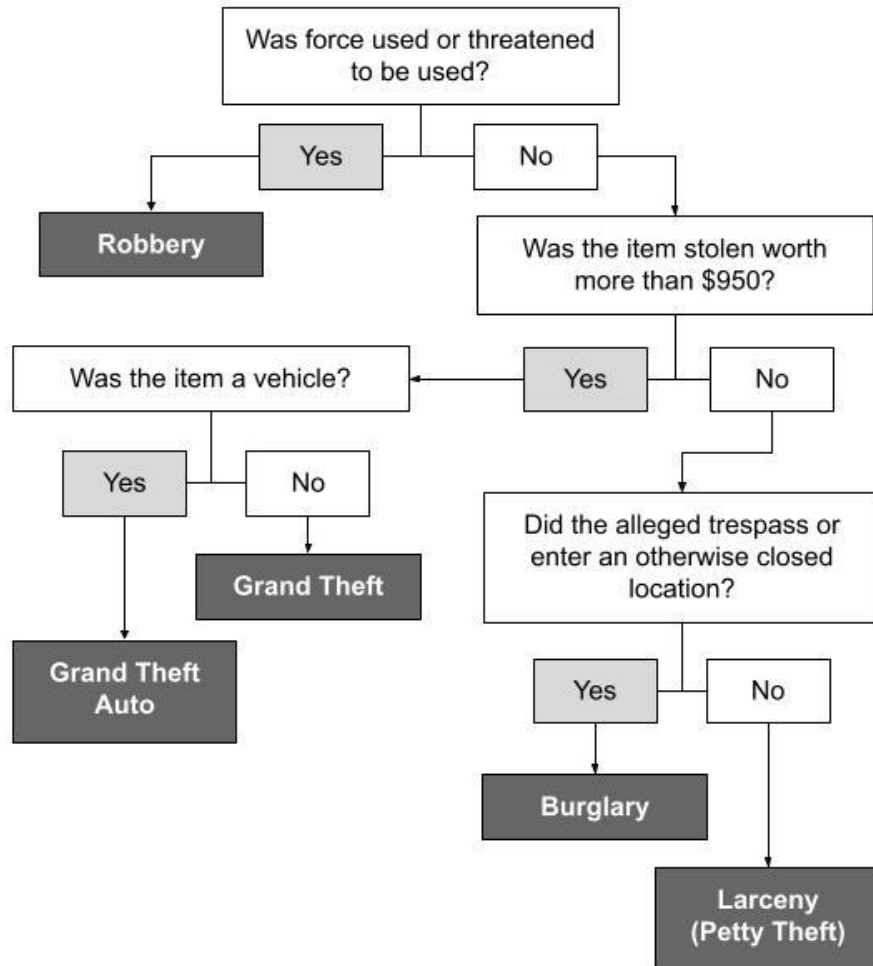
Robbery occurs when force is used, or threatened to be used in order to seize, or attempt to steal property. If the item is worth more than \$950, but there was no force, it is a grand theft. If the perpetrator trespasses or enters an otherwise closed location, it is a burglary. All other instances of stealing are classified as larceny theft, also known as petty theft.

The general differences between these classifications can be explored in the scope of a grocery store:

- A thief steals a small potted plant on display for sale in front of a grocery store. This is *larceny theft* as no one was threatened by the thief's actions, the item was less than \$950, and the location was open to the general public.
- A thief enters a staff-only storage room at the back of the grocery store and steals a small potted plant. This is a *burglary* because the thief trespassed in order to steal the item.
- A thief shoves a store employee away from the display in front of the grocery store and steals a small potted plant. This is a *robbery* because the thief used force. If the thief threatened to use force, but did not actually touch another person, it would also be considered a robbery.
- A thief steals an unattended wallet and phone left in a shopping cart, totaling more than \$950 in losses. This is a *grand theft*. If, however, the thief threatened the owner of the phone and wallet, it would be a robbery.
- A thief steals a car from a grocery store parking lot. This is *grand theft auto*.

These differences can also be seen in the following flowchart:

## Classifying a Crime



## Crime Prevention

There are simple steps to take to avoid being a victim of a property crime:

- Lock all windows and doors, including garage doors and your vehicle.
- Turn on exterior lights or set them on a timer so your home looks occupied even if you are away.
- Remove valuables from plain view in your vehicle and through the windows of your home.

If you see something suspicious, say something! Always be aware of your surroundings. Recognize what is normal for your neighborhood and what is not, and report any suspicious activity immediately to the Lomita Sheriff's Station by calling (310) 539-1661, or 9-1-1 in an emergency.