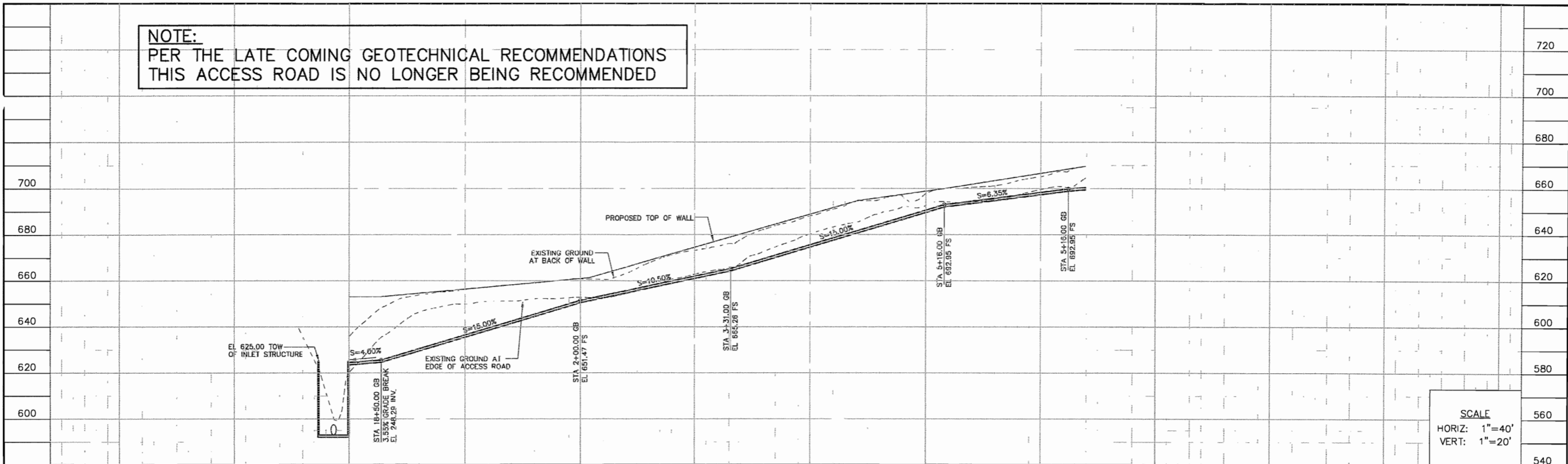
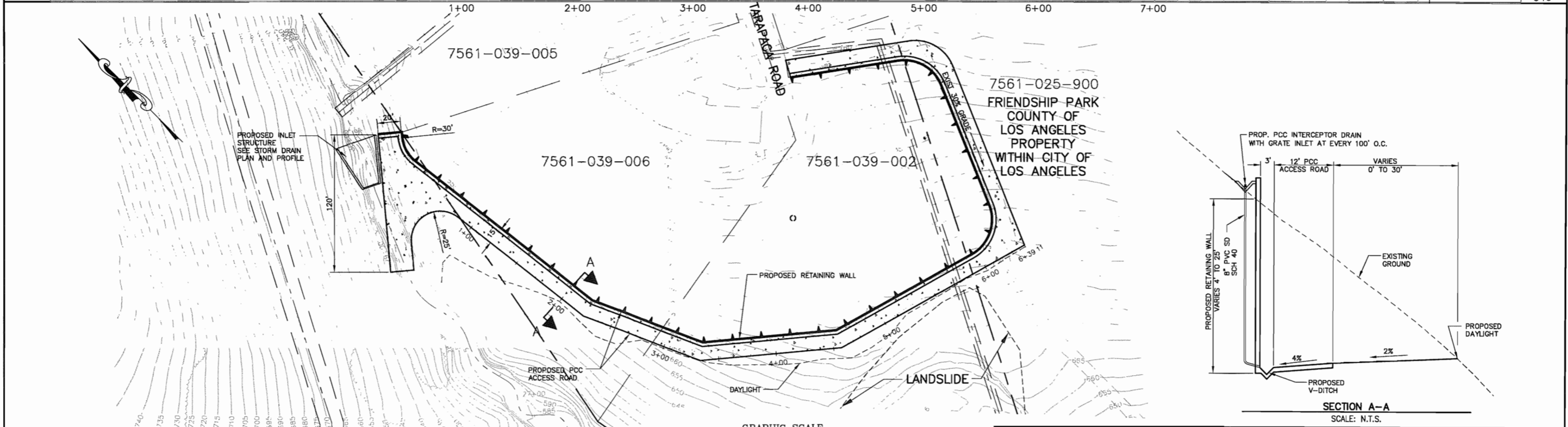


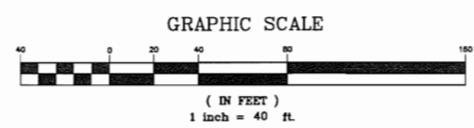
**NOTE:**  
PER THE LATE COMING GEOTECHNICAL RECOMMENDATIONS  
THIS ACCESS ROAD IS NO LONGER BEING RECOMMENDED



SCALE  
HORIZ: 1"=40'  
VERT: 1"=20'



PRELIMINARY STUDY PLANS  
NOT FOR CONSTRUCTION  
SEPTEMBER 2010



PLAN PREPARED BY:  
**Harris & Associates**  
34 Executive Park, Suite 150  
Irvine, CA 92614 (949) 655-3900  
RANDALL G. BERRY RCE #44642 DATE

CITY OF RANCHO PALOS VERDES  
RON DRAGOO SENIOR ENGINEER DATE  
RCE: 54924

NO.	DATE	DESCRIPTION	APPROVED
REVISIONS			

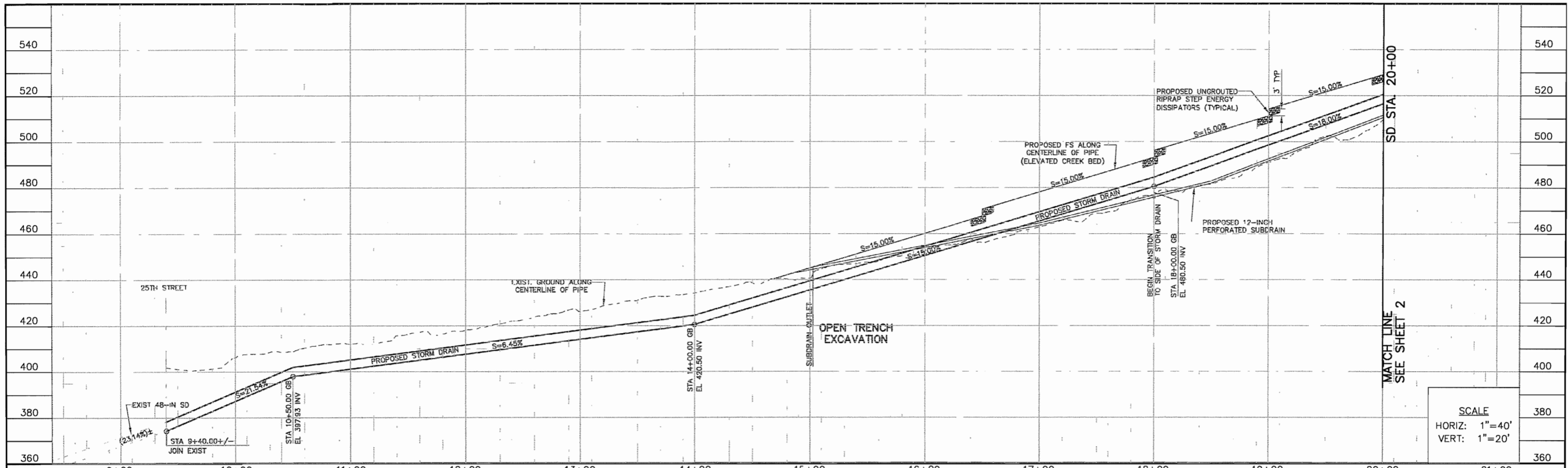
DESIGNED: RGB/EG  
DRAWN: EGS  
CHECKED: RGB  
DATE: SEPT 10

CITY OF RANCHO PALOS VERDES

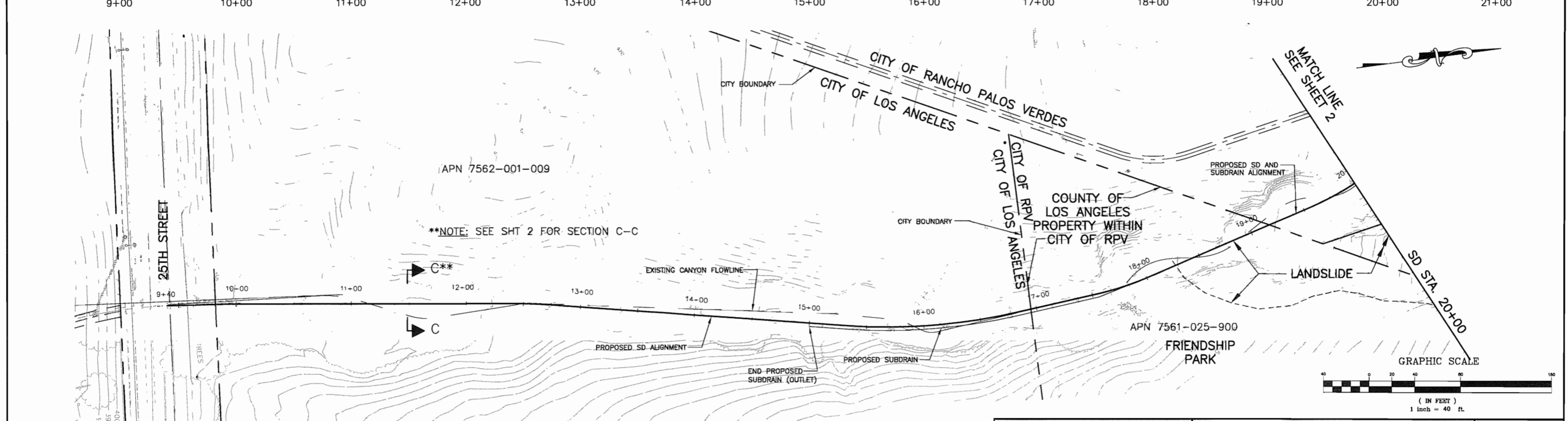


SAN RAMON STORM DRAIN  
PROPOSED ACCESS ROAD

SHEET 1 OF 1  
PRJ NO. XXXXX



SCALE  
 HORIZ: 1"=40'  
 VERT: 1"=20'



PRELIMINARY STUDY PLANS  
 NOT FOR CONSTRUCTION  
 SEPTEMBER 2010



PLAN PREPARED BY:  
**Harris & Associates**  
 34 Executive Park, Suite 150  
 Irvine, CA 92614 (949) 655-3900  
 RANDALL G. BERRY RCE #44642 DATE

CITY OF RANCHO PALOS VERDES  
 RON DRAGOO SENIOR ENGINEER DATE  
 RCE: 54924

NO.	DATE	DESCRIPTION	APPROVED
REVISIONS			

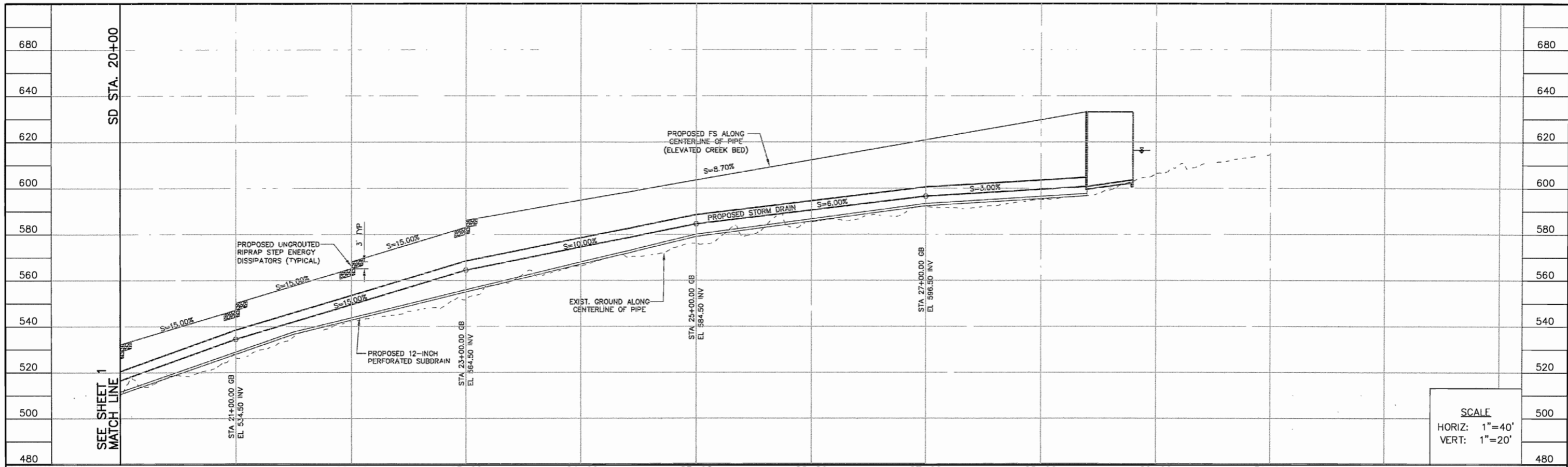
DESIGNED: RGB/EG  
 DRAWN: EGR  
 CHECKED: RGB  
 DATE: SEPT 10

CITY OF RANCHO PALOS VERDES

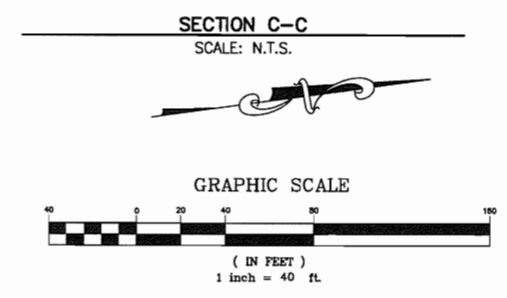
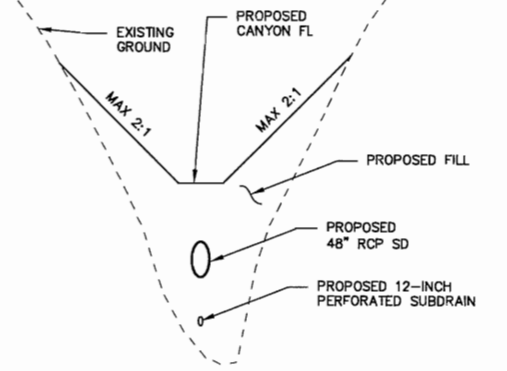
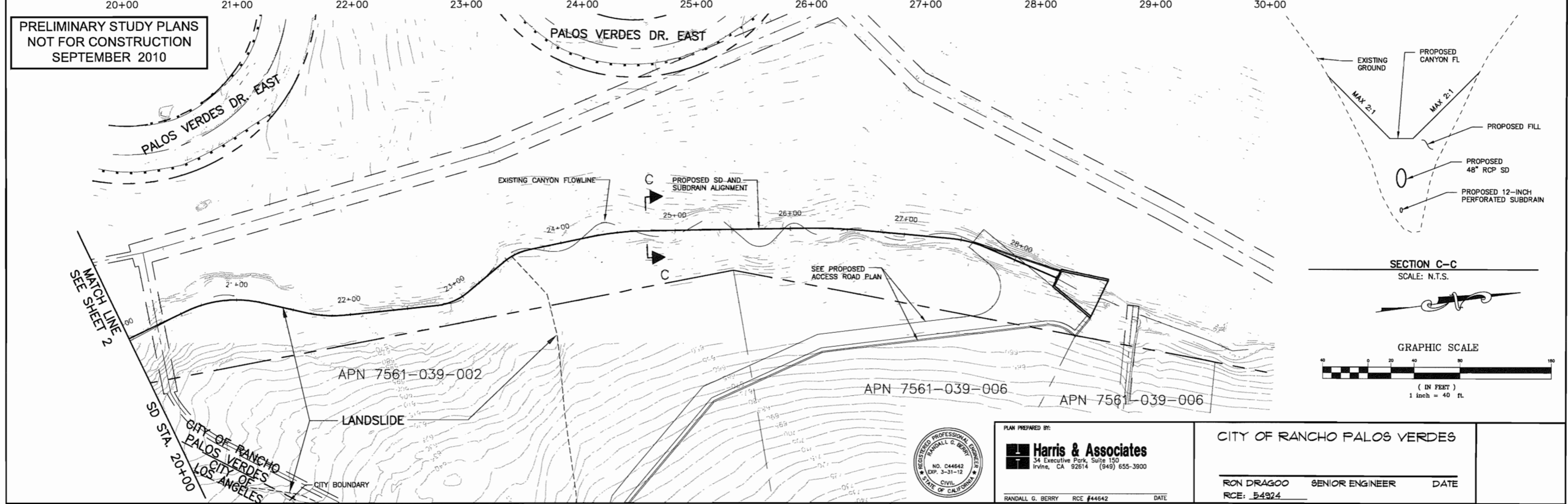


SAN RAMON STORM DRAIN  
 ALTERNATIVE 2A

SHEET 1 OF 2  
 PRJ NO. XXXXX



SCALE  
 HORIZ: 1"=40'  
 VERT: 1"=20'



NO.	DATE	DESCRIPTION	APPROVED
REVISIONS			

DESIGNED: RGB/EG  
 DRAWN: EGR  
 CHECKED: RGB  
 DATE: SEPT 10

CITY OF RANCHO PALOS VERDES



PLAN PREPARED BY:  
**Harris & Associates**  
 34 Executive Park, Suite 150  
 Irvine, CA 92614 (949) 655-3900  
 RANDALL G. BERRY RCE #44642 DATE

CITY OF RANCHO PALOS VERDES  
 RON DRAGOO SENIOR ENGINEER DATE  
 RCE: 54924

SAN RAMON STORM DRAIN  
 ALTERNATIVE 2A

SHEET 2 OF 2  
 PRJ NO. XXXXX