

SCALE  
 HORIZ: 1"=20'  
 VERT: 1"=10'

**CONSTRUCTION NOTES**

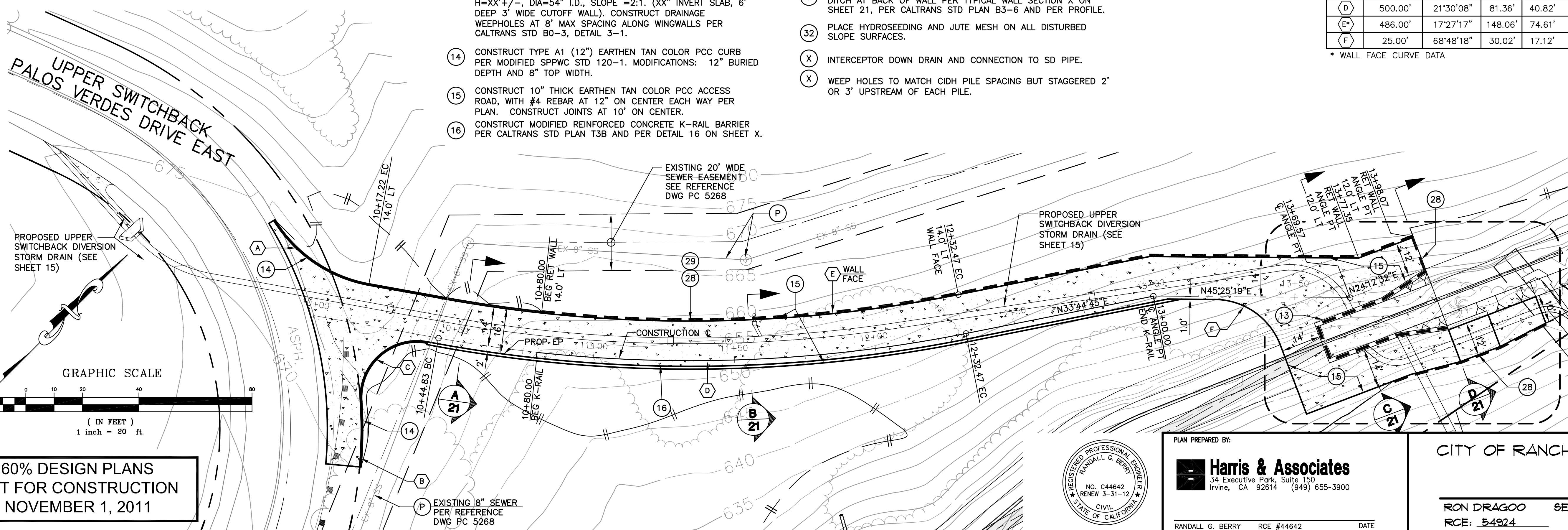
- (P) PROTECT EXISTING IMPROVEMENT IN PLACE.
- (13) CONSTRUCT REINFORCED CONCRETE INLET STRUCTURE, HEADWALL, AND WARPED WINGWALLS PER MODIFIED CALTRANS STD PLAN D86B. MODIFIED PER DETAIL 13 ON SHEET XX. H=XX'+/-, DIA=54" I.D., SLOPE =2:1. (XX" INVERT SLAB, 6' DEEP 3" WIDE CUTOFF WALL). CONSTRUCT DRAINAGE WEEPHOLES AT 8' MAX SPACING ALONG WINGWALLS PER CALTRANS STD B0-3, DETAIL 3-1.
- (14) CONSTRUCT TYPE A1 (12") EARTHEN TAN COLOR PCC CURB PER MODIFIED SPPWC STD 120-1. MODIFICATIONS: 12" BURIED DEPTH AND 8" TOP WIDTH.
- (15) CONSTRUCT 10" THICK EARTHEN TAN COLOR PCC ACCESS ROAD, WITH #4 REBAR AT 12" ON CENTER EACH WAY PER PLAN. CONSTRUCT JOINTS AT 10' ON CENTER.
- (16) CONSTRUCT MODIFIED REINFORCED CONCRETE K-RAIL BARRIER PER CALTRANS STD PLAN T3B AND PER DETAIL 16 ON SHEET X.

**CONSTRUCTION NOTES (CONTD)**

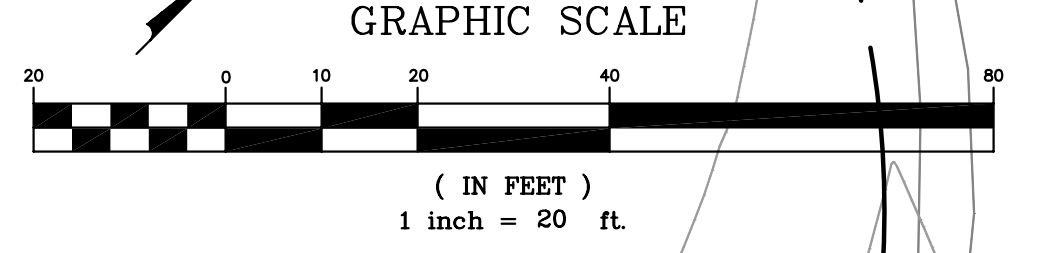
- (28) CONSTRUCT CIDH SOLDIER PILE RETAINING WALL PER TYPICAL WALL SECTION X ON SHEET 21, PLAN, PROFILE, AND STRUCTURAL DETAIL 28 ON SHEET X.
- (29) CONSTRUCT REINFORCED CONCRETE INTERCEPTOR DRAINAGE DITCH AT BACK OF WALL PER TYPICAL WALL SECTION X ON SHEET 21, PER CALTRANS STD PLAN B3-6 AND PER PROFILE.
- (32) PLACE HYDROSEEDING AND JUTE MESH ON ALL DISTURBED SLOPE SURFACES.
- (X) INTERCEPTOR DOWN DRAIN AND CONNECTION TO SD PIPE.
- (X) WEEP HOLES TO MATCH CIDH PILE SPACING BUT STAGGERED 2' OR 3' UPSTREAM OF EACH PILE.

CURVE TABLE				
NO	RADIUS	DELTA	LENGTH	TANGENT
(A)	50.00'	47°58'47"	41.87'	22.25'
(B)	150.00'	08°53'19"	23.27'	11.66'
(C)	20.00'	104°26'43"	36.46'	25.81'
(D)	500.00'	21°30'08"	81.36'	40.82'
(E)	486.00'	17°27'17"	148.06'	74.61'
(F)	25.00'	68°48'18"	30.02'	17.12'

\* WALL FACE CURVE DATA



SEE SHEET 10 FOR HEADWALL DETAIL AND ACCESS ROAD ELEVATIONS



60% DESIGN PLANS  
 NOT FOR CONSTRUCTION  
 NOVEMBER 1, 2011

NO.	DATE	DESCRIPTION	APPROVED
REVISIONS			

DESIGNED	RGB/EGS/PL
DRAWN	EGS/PL
CHECKED	RGB
DATE	OCT 11

CITY OF RANCHO PALOS VERDES

PLAN PREPARED BY:  
**Harris & Associates**  
 34 Executive Park, Suite 150  
 Irvine, CA 92614 (949) 655-3900

RANDALL G. BERRY  
 RCE #44642 DATE

CITY OF RANCHO PALOS VERDES

RON DRAGOO SENIOR ENGINEER DATE  
 RCE: 54924

SAN RAMON STORM DRAIN  
 PLAN AND PROFILE  
 STA 30+00 TO STA 35+00

SHEET 14 OF 31  
 SHT. 14  
 PRJ NO. XXXXX