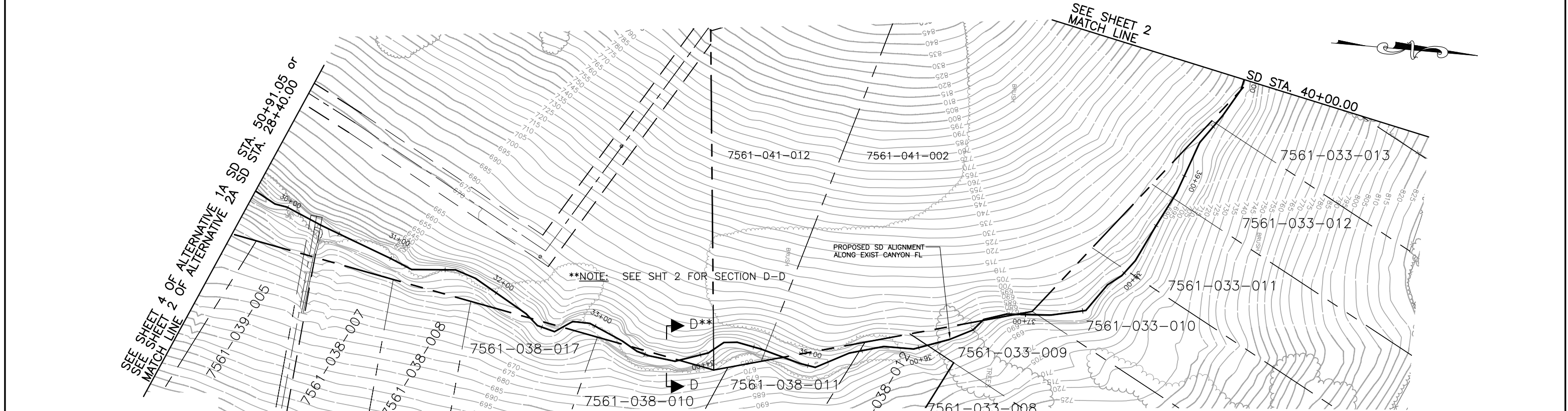
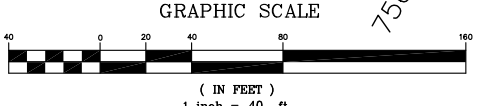


SCALE
 HORIZ: 1"=40'
 VERT: 1"=20'



PRELIMINARY STUDY PLANS
 NOT FOR CONSTRUCTION
 SEPTEMBER 2010



PLAN PREPARED BY:
Harris & Associates
 34 Executive Park, Suite 150
 Irvine, CA 92614 (949) 655-3900
 RANDALL G. BERRY RCE #44642 DATE

CITY OF RANCHO PALOS VERDES
 RON DRAGOO SENIOR ENGINEER DATE
 RCE: 54924

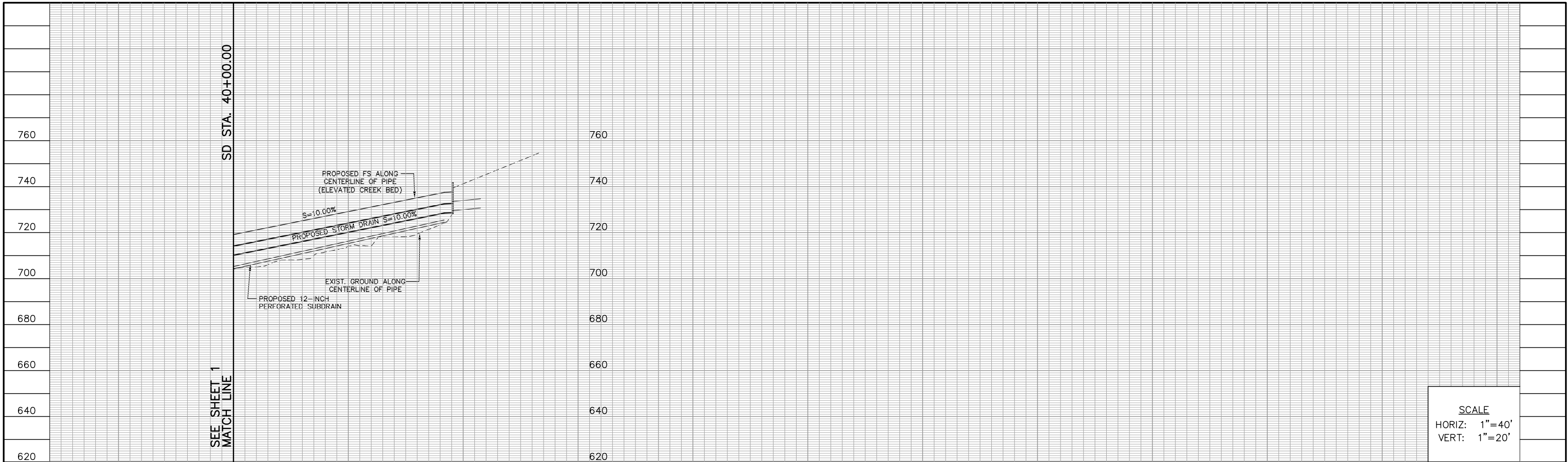
NO.	DATE	DESCRIPTION	APPROVED
REVISIONS			

DESIGNED: RGP/EG
 DRAIN: EGR
 CHECKED: RGB
 DATE: SEPT 10

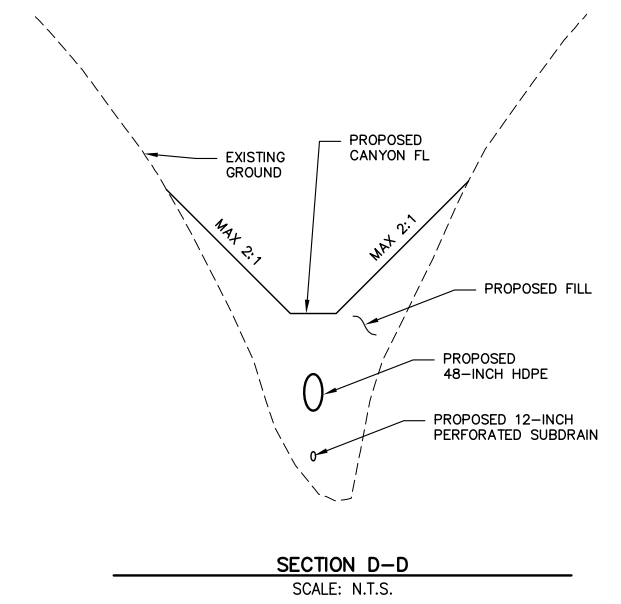
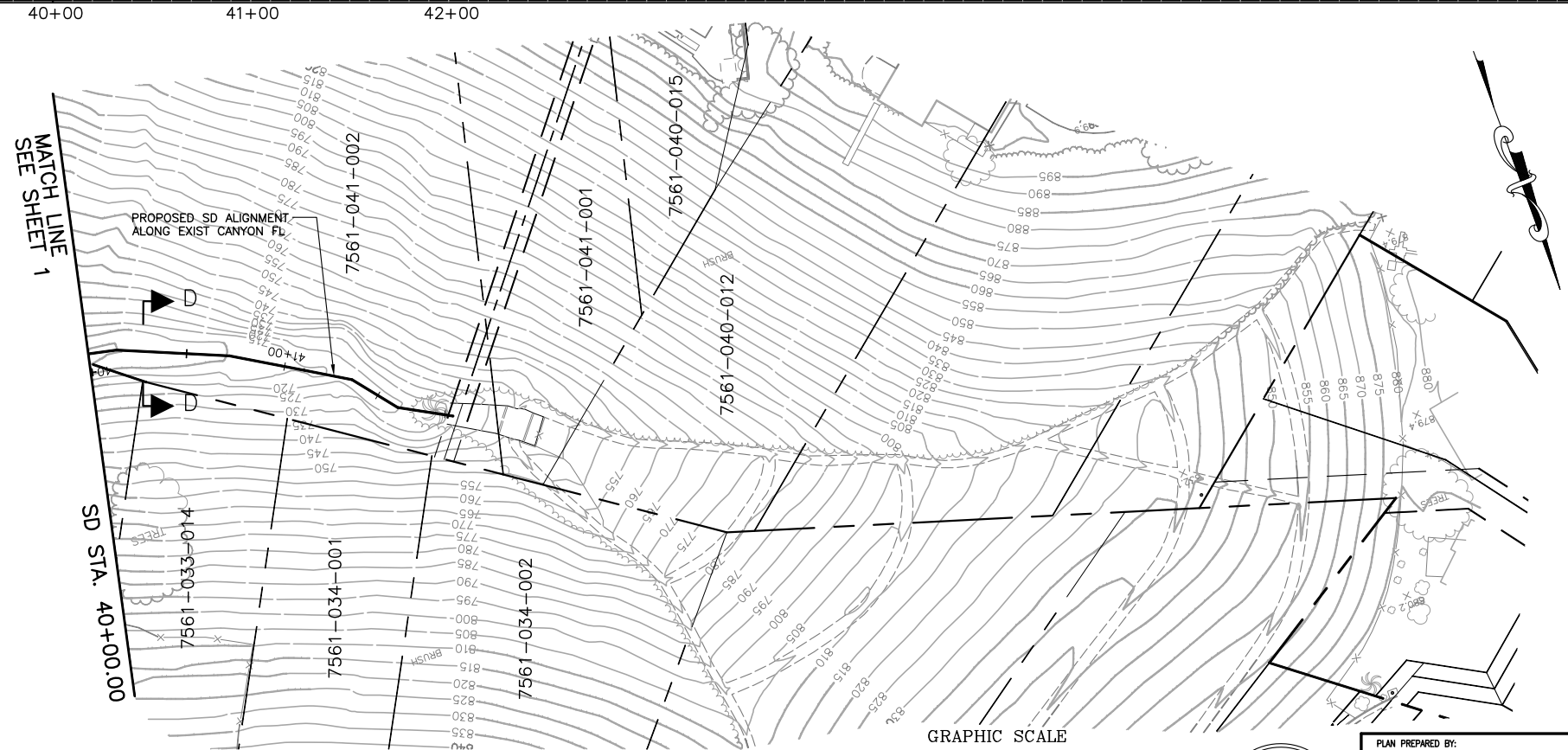
CITY OF RANCHO PALOS VERDES



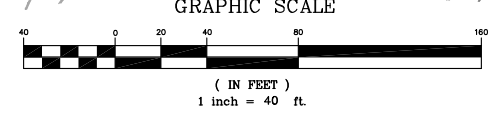
SAN RAMON STORM DRAIN
 OPTION UPSTREAM EXTENSION - ALT 1B & 2B



SCALE
 HORIZ: 1" = 40'
 VERT: 1" = 20'



PRELIMINARY STUDY PLANS
 NOT FOR CONSTRUCTION
 SEPTEMBER 2010



PLAN PREPARED BY:
Harris & Associates
 34 Executive Park, Suite 150
 Irvine, CA 92614 (949) 655-3900
 RANDALL G. BERRY RCE #44642 DATE

CITY OF RANCHO PALOS VERDES
 RON DRAGOO SENIOR ENGINEER DATE
 RCE: 54924

NO.	DATE	DESCRIPTION	APPROVED
REVISIONS			

DESIGNED	<u>RGB/EG</u>
DRAWN	<u>EGE</u>
CHECKED	<u>RGB</u>
DATE	<u>SEPT 10</u>

CITY OF RANCHO PALOS VERDES



SAN RAMON STORM DRAIN
 OPTION UPSTREAM EXTENSION - ALT 1B & 2B