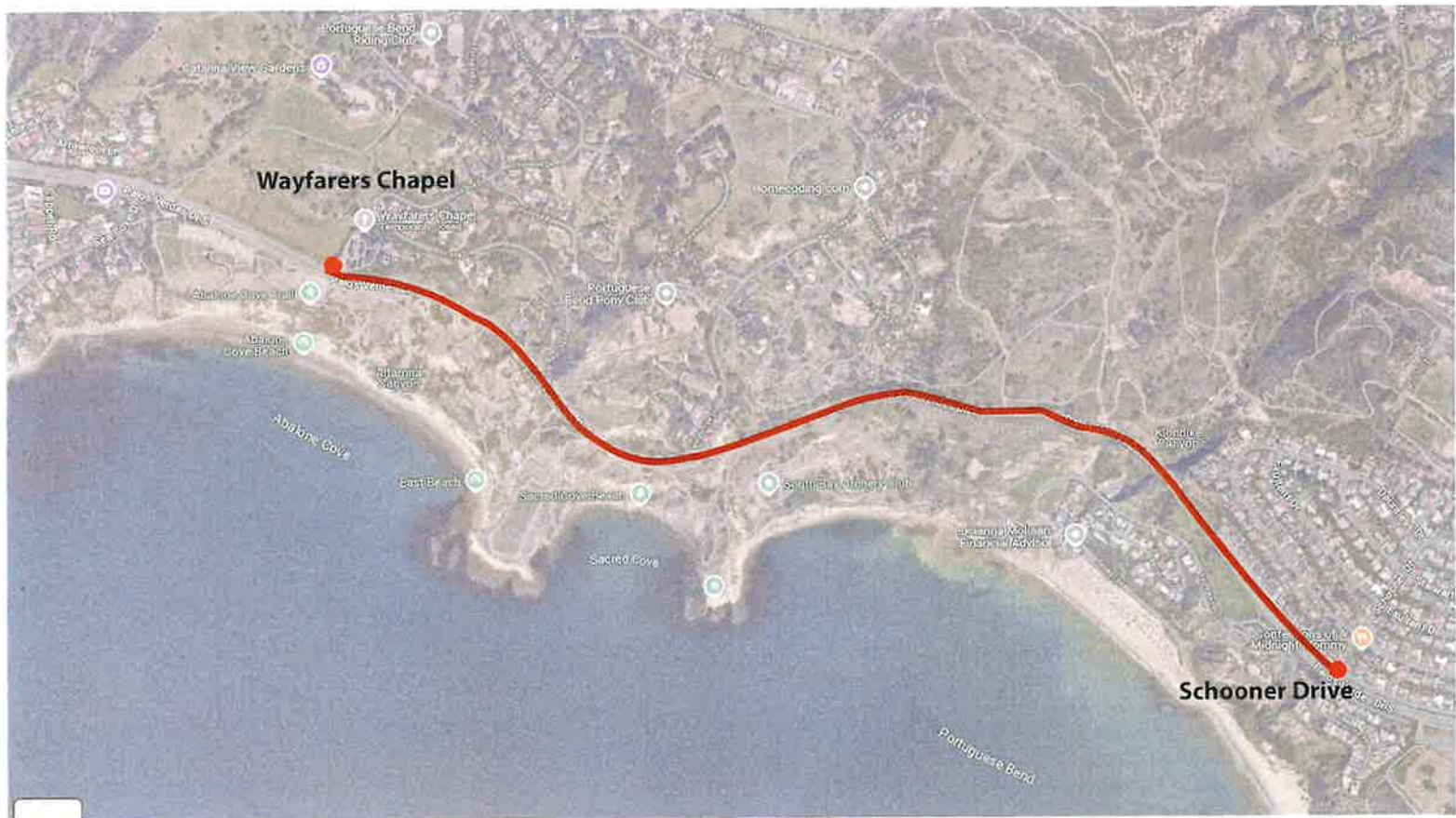
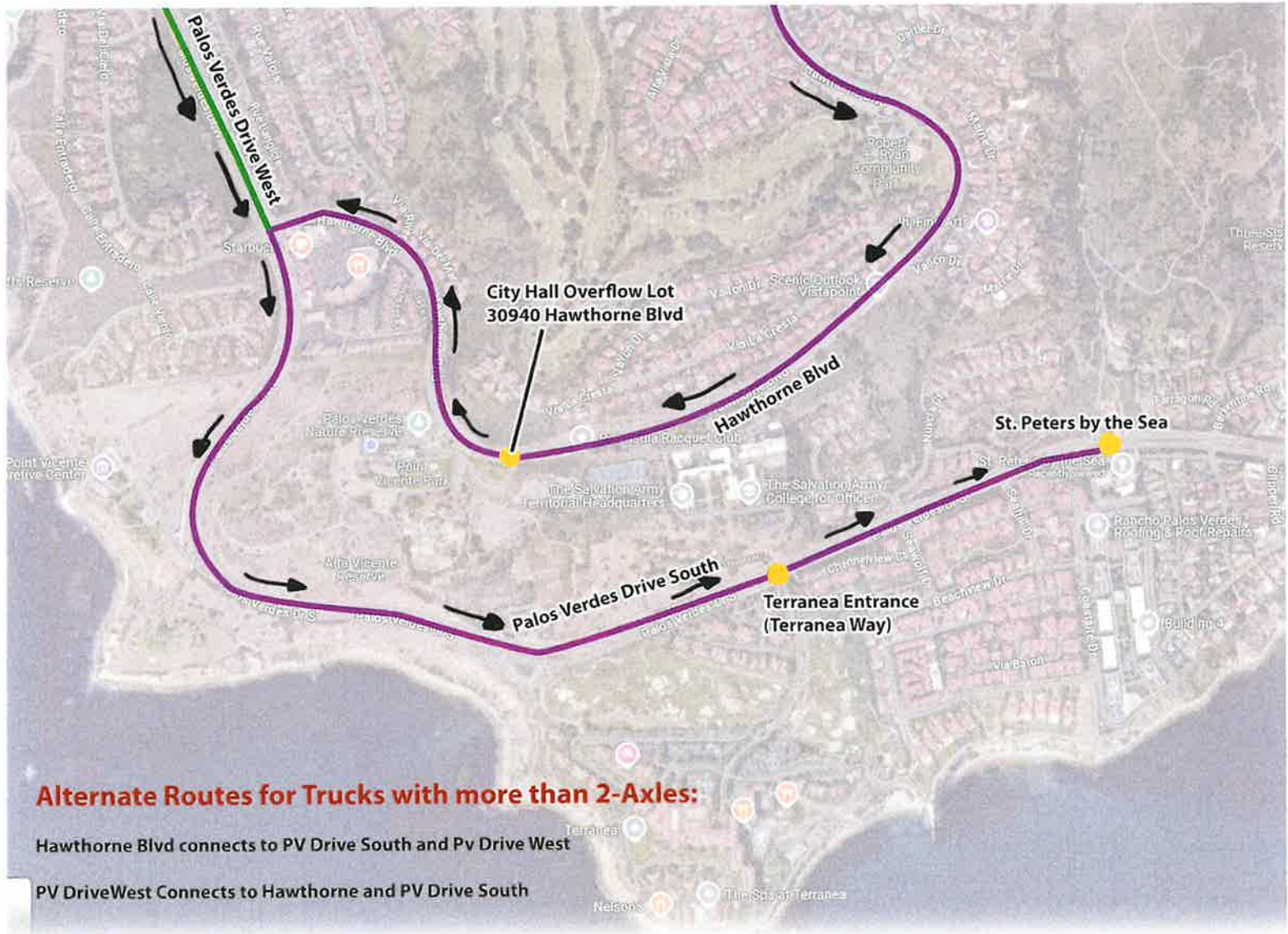


The Portuguese Bend Landslide Area covers portions of Palos verdes Drive South between Schooner Drive and Wayfarers Chapel. Trucks with more than 2-Axles are prohibited from driving on that section of road. Drivers are advised to use alternate locations via Hawthorne Blvd and Palos Verdes Drive West. (See map on page 2)

 = Road Closed to Trucks with more than 2-Axles Prohibited (use alternate routes)





Alternate Routes for Trucks with more than 2-Axles:

Hawthorne Blvd connects to PV Drive South and PV Drive West

PV Drive West Connects to Hawthorne and PV Drive South