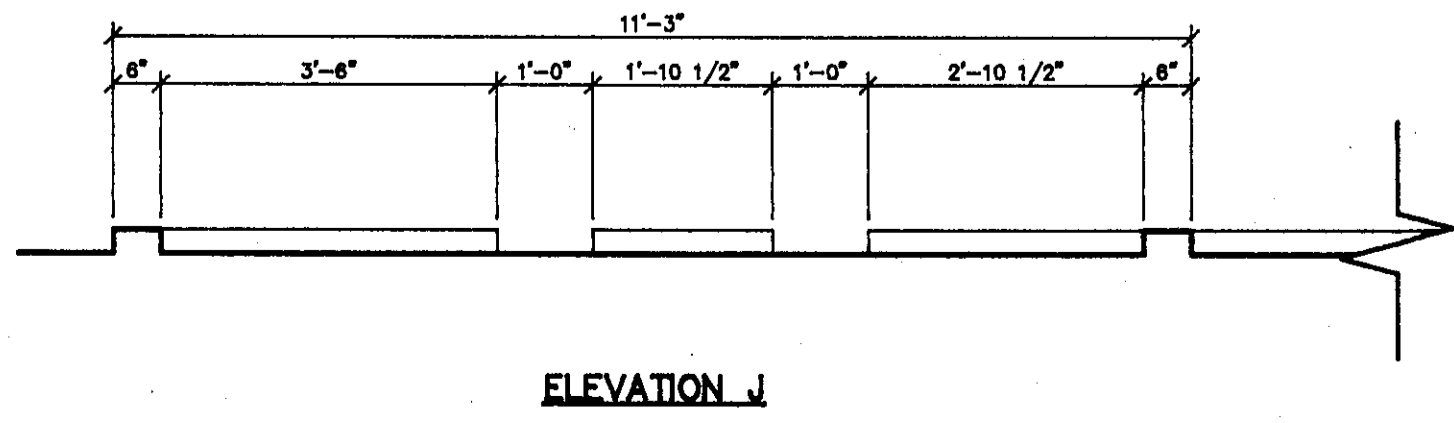
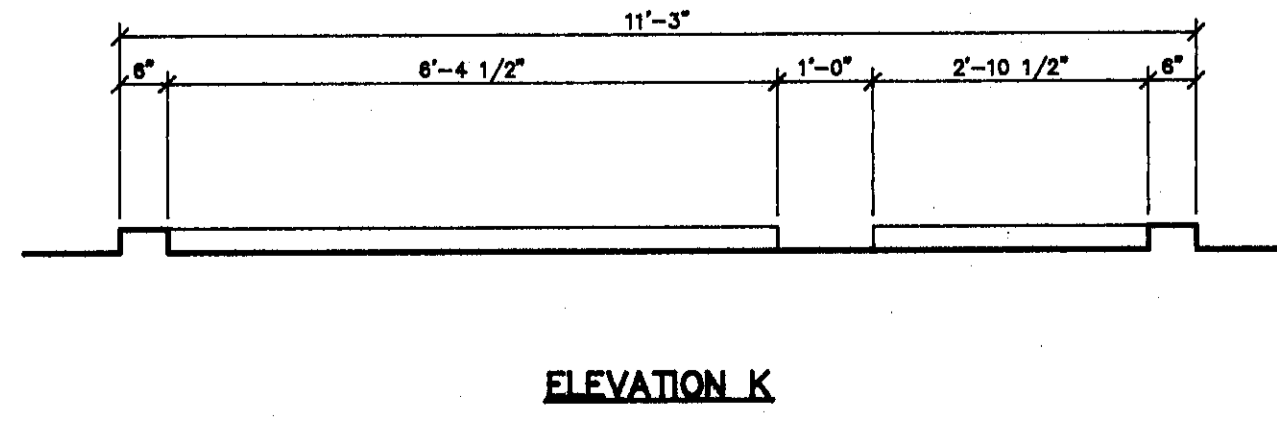


**FOUNDATION & BOLT SETTING PLAN**  
SCALE: 1/2" = 1'-0"

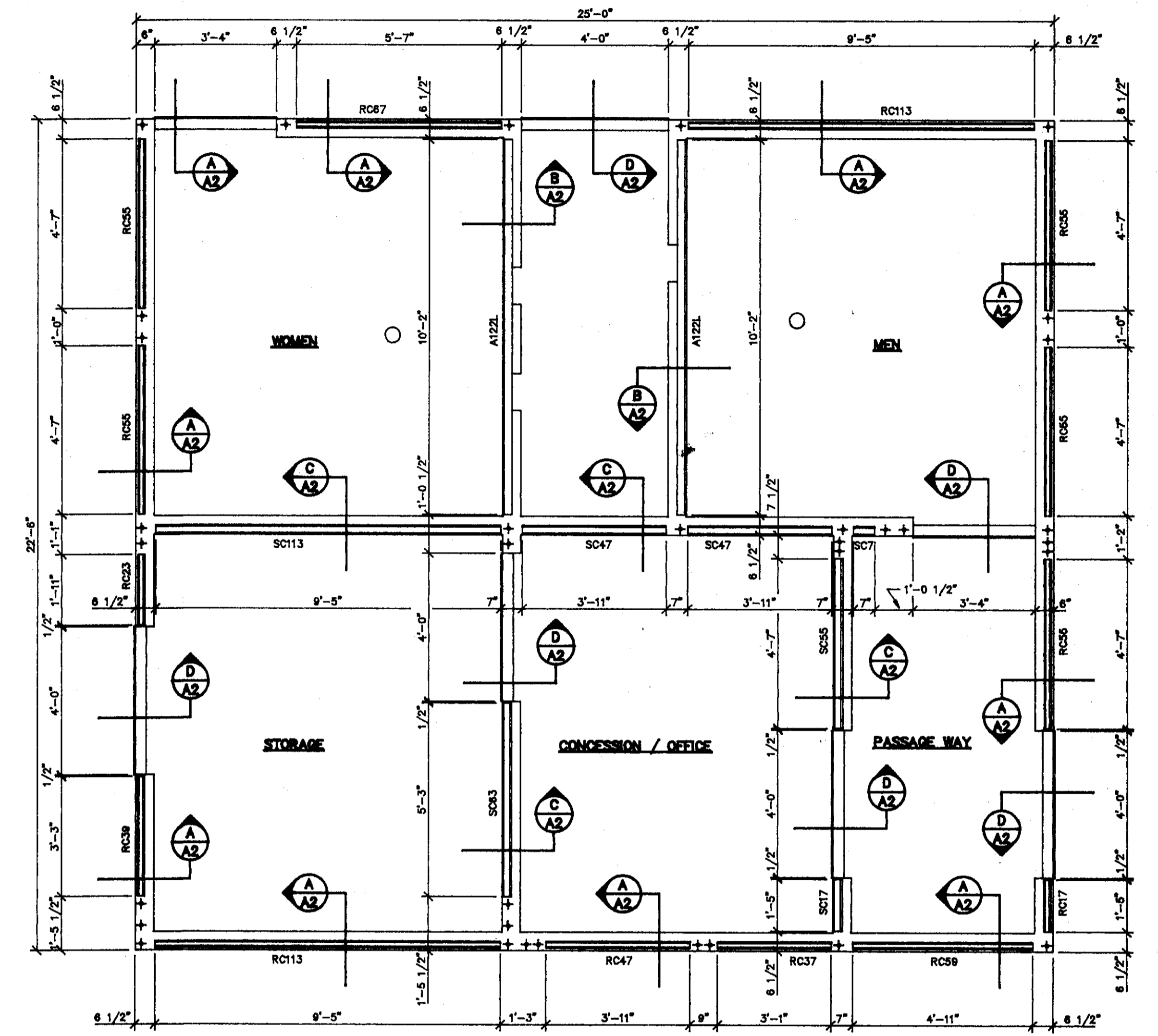
\*DIM SHOWN IS MIN. RECOMMEND BLOCKOUT 1/4" LONGER AT EACH END FOR EASER FIT OF DOOR FRAME. STYROFOAM BLOCKOUTS ARE FURN.



**ELEVATION J**



**ELEVATION K**



**BASE CHANNEL & ANGLE PLAN**  
SCALE: 3/8" = 1'-0"

**FOUNDATION NOTES:**  
100 - 1/2" x 8" HOOK BOLTS ARE FURN.  
ALL CONCRETE 2500 PSI MINIMUM AT 28 DAYS.  
FOOTING SIZE AND REINFORCING SHOWN ON FOUNDATION DETAILS ARE MINIMUMS. FOOTING SIZE, DEPTH AND REINFORCING ARE DETERMINED BY LOCAL SOIL CONDITIONS AND LOCAL CODE REQUIREMENTS. TOPS OF CURBS MUST BE SMOOTH AND LEVEL AND ANCHOR BOLTS MUST BE SET EXACTLY AS SHOWN OR BUILDING WILL NOT FIT TOGETHER. NOTE BLOCKOUTS IN SLAB FOR DOOR FRAME SPREADERS.

ISSUANCE OF THIS DRAWING FOR APPROVAL DOES NOT CONSTITUTE ACCEPTANCE OF CUSTOMER'S ORDER BY SUPER SECUR MFG. CO. THIS DRAWING TO BE USED IN PLACING MATERIALS SOLD UNDER THIS CONTRACT ONLY. PURCHASER TO CHECK ALL DIMENSIONS AT JOB AS SUPER SECUR MFG. CO. ASSUMES NO RESPONSIBILITY FOR FOUNDATIONS, SLAB, CONCRETE CURBS OR GENERAL BUILDING DIMENSIONS.

**SUPER SECUR MFG. CO.**  
A DIVISION OF ACORN ENGINEERING COMPANY  
Sales: 1195 Evans Avenue San Francisco, CA 94124 (415) 824-1778  
Factory: 15058 Proctor Avenue City of Industry, CA 91744 (818) 336-4561

MP-2325-G 22'-6" x 25'-0" SERIES 3 BUILDING w/CONCESSION / OFFICE & STORAGE			
REV 7/19/88 LHG 10/5/88 LHG			
ABALONE COVE, RANCHO PALOS VERDES, CALIFORNIA			
DATE	DWN BY	JOB NO.	SHEET
6/28/88	LHG		A4