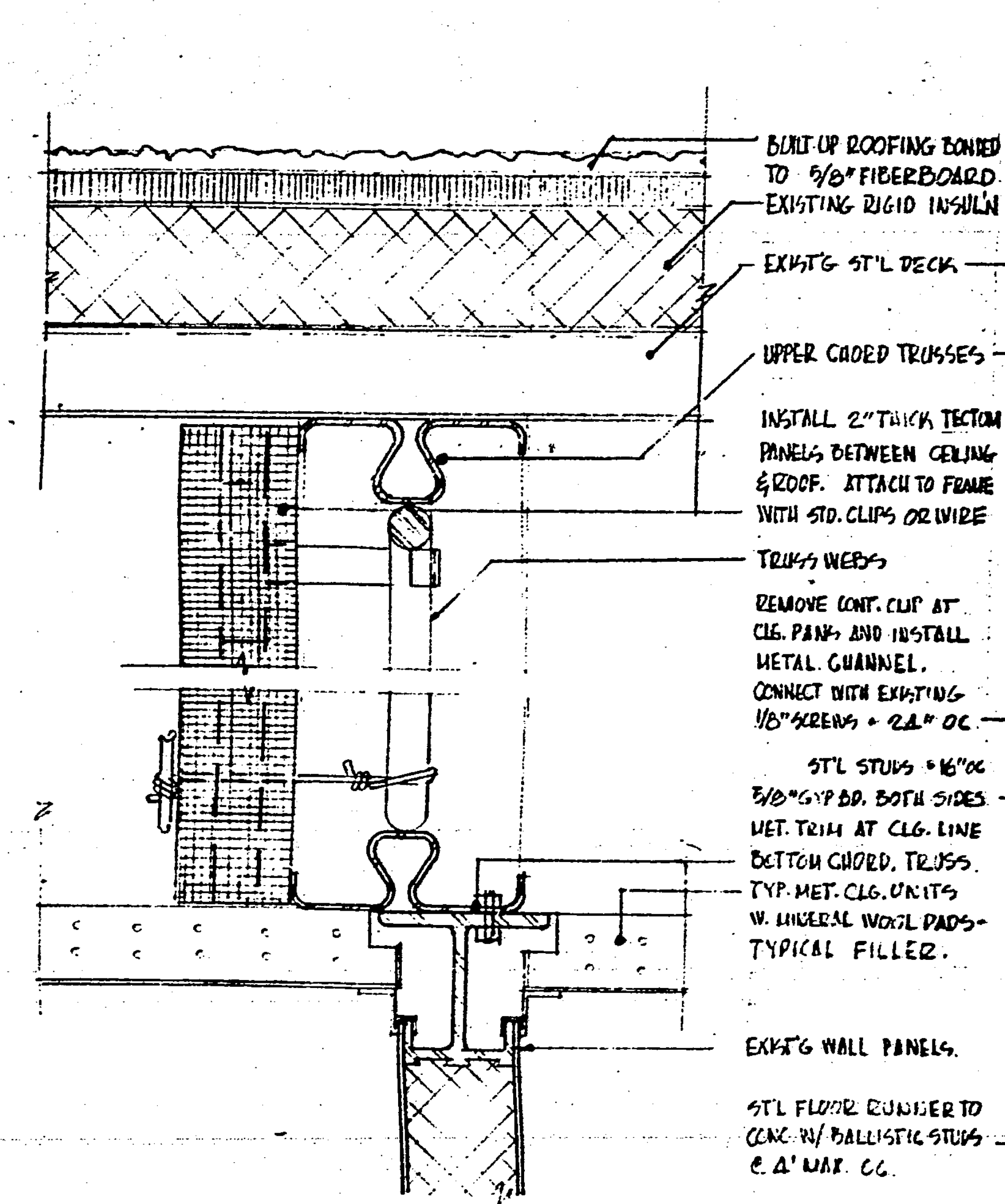
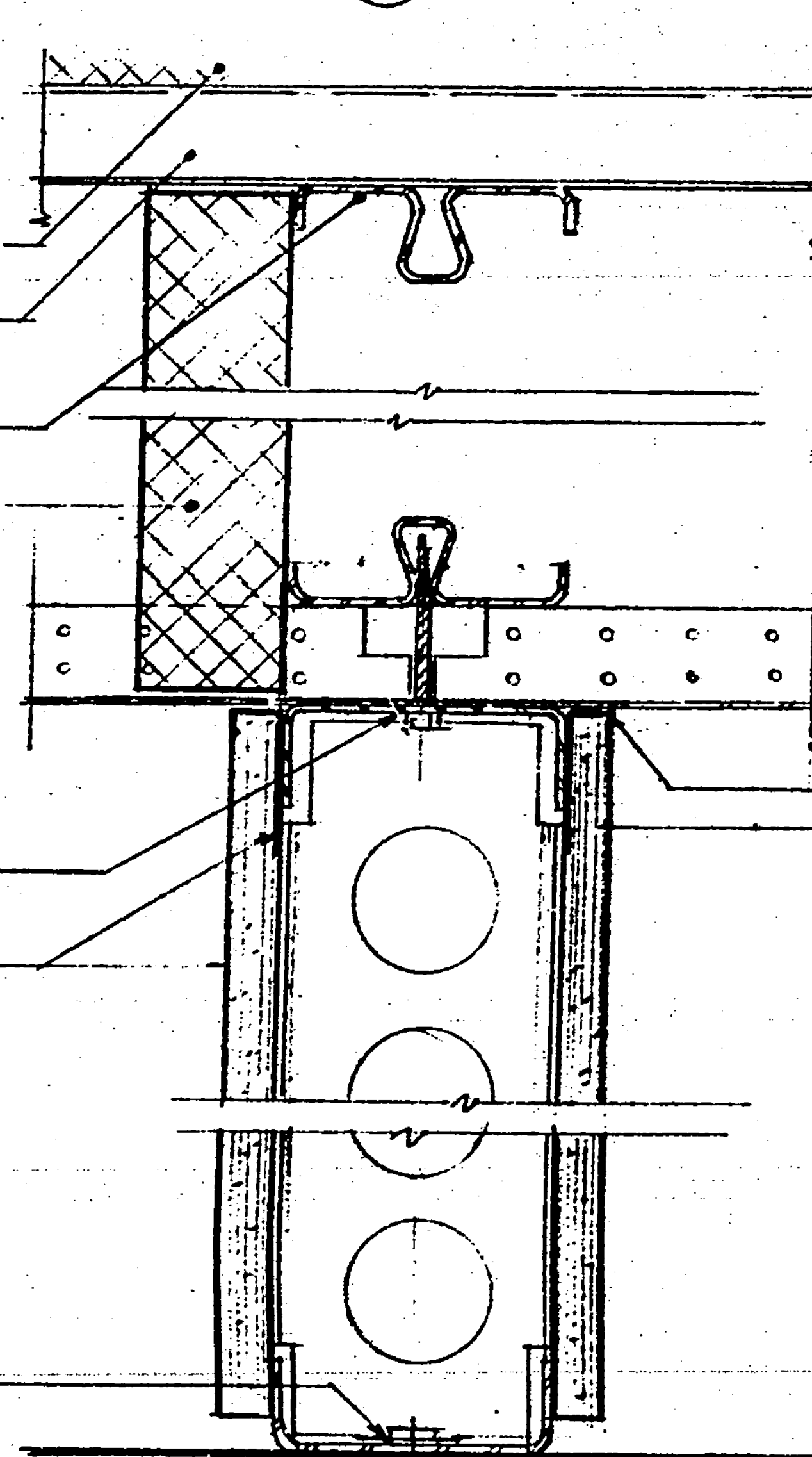


ROOF DETAILS
HALF SCALE

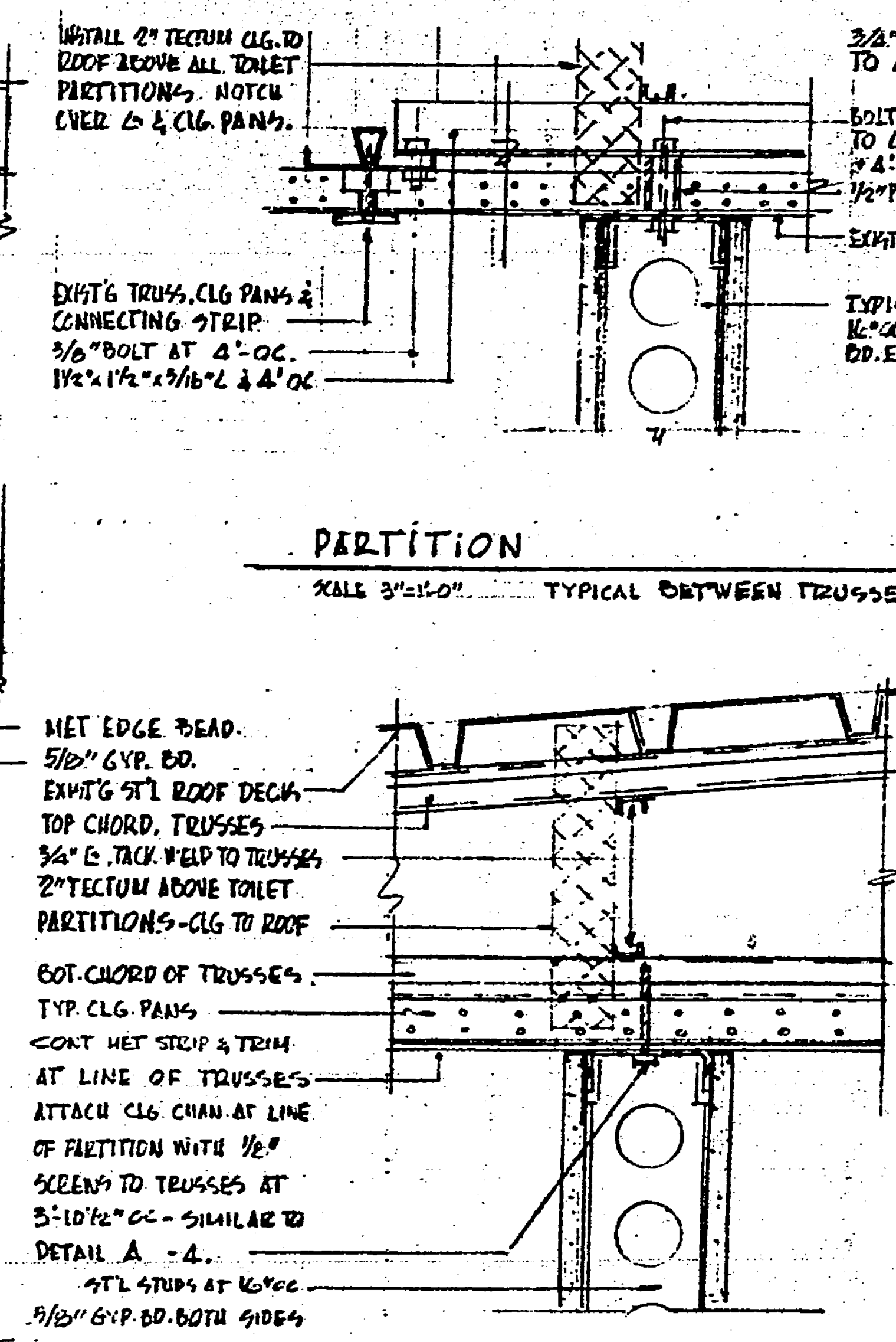
ROOF DETAILS
HALF SCALE



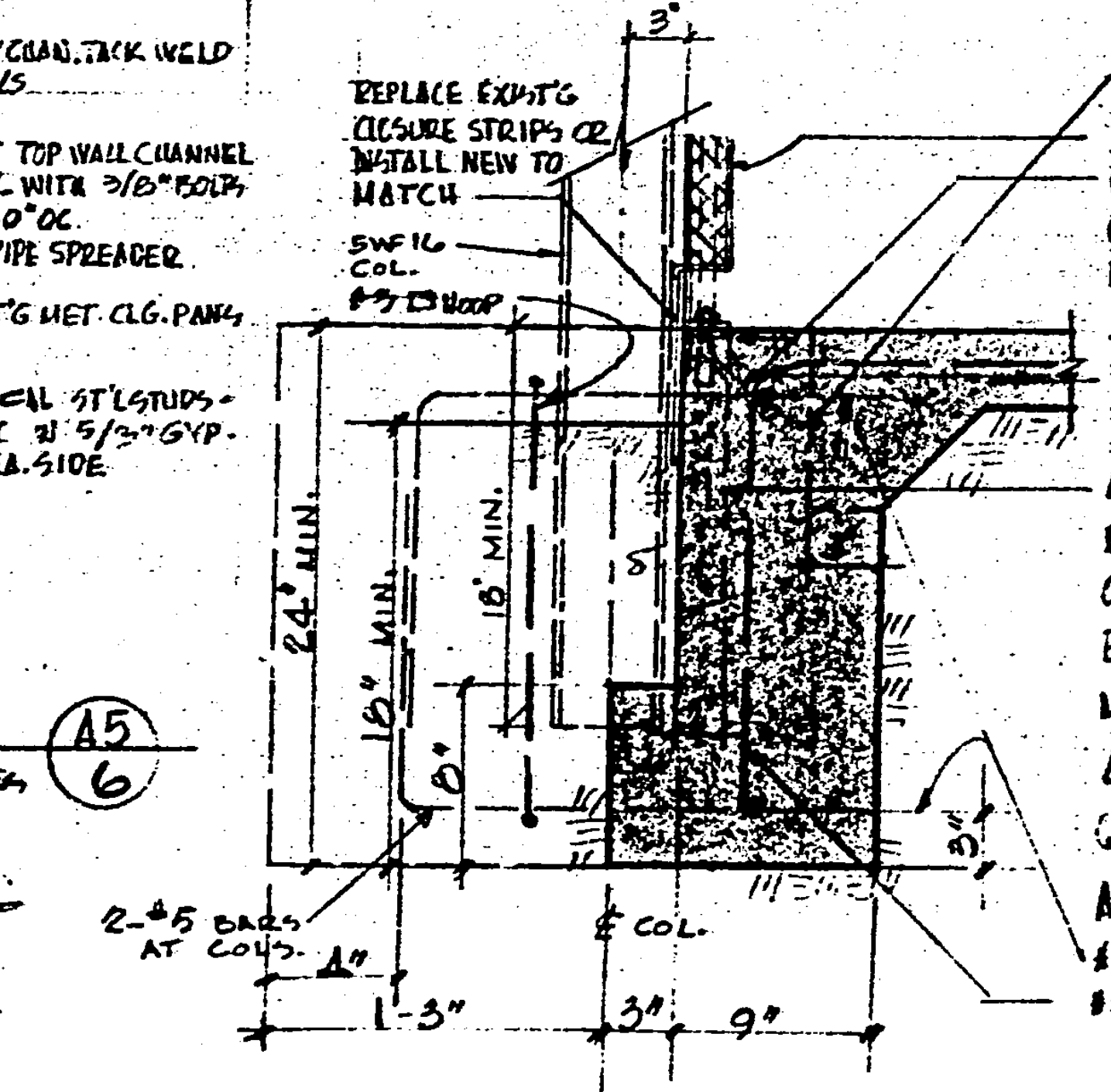
FILLED ABOVE CLASSROOM WALL
HALF SCALE



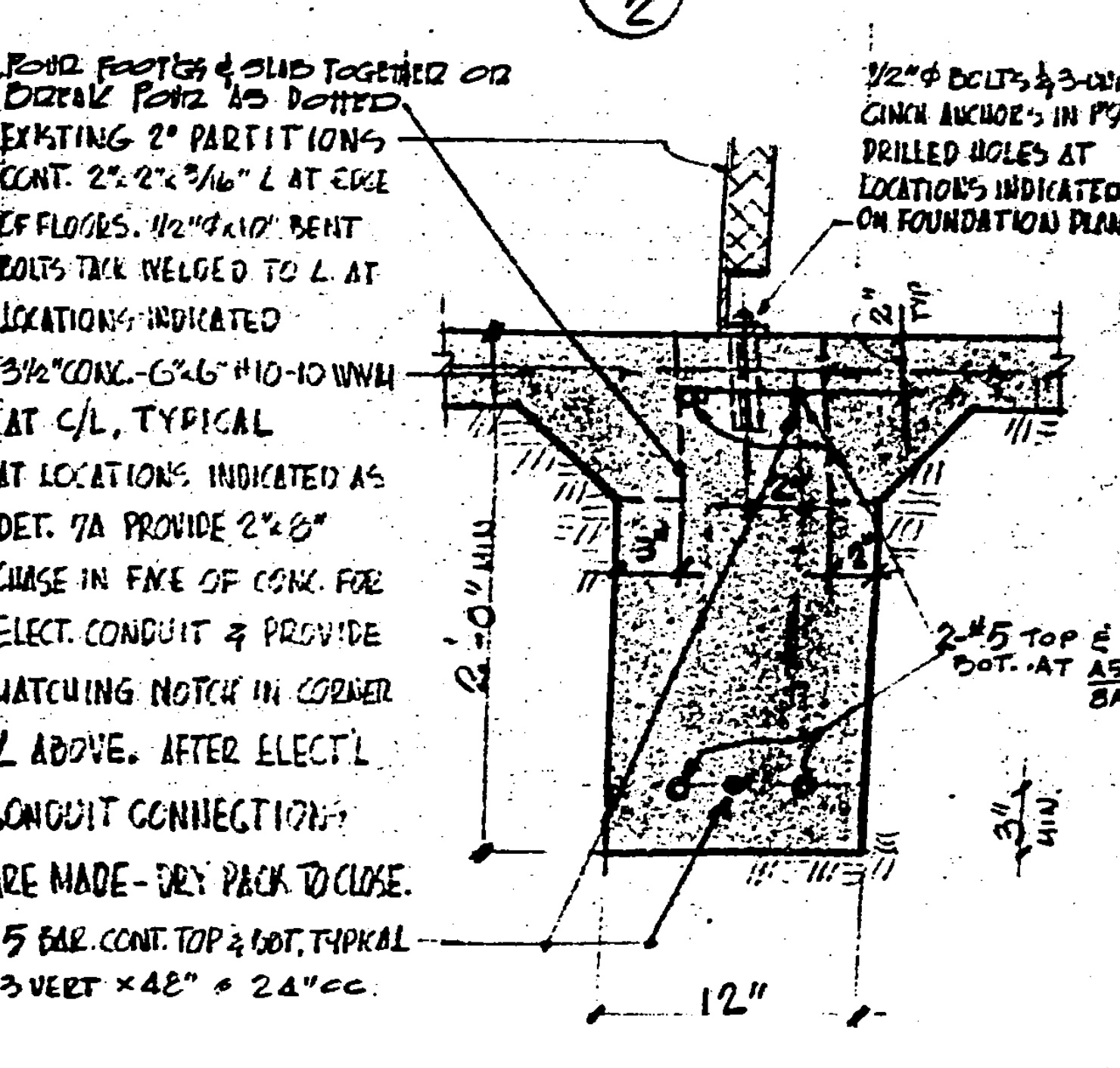
PARTITION
HALF SCALE TYPICAL BELOW TRUSSES



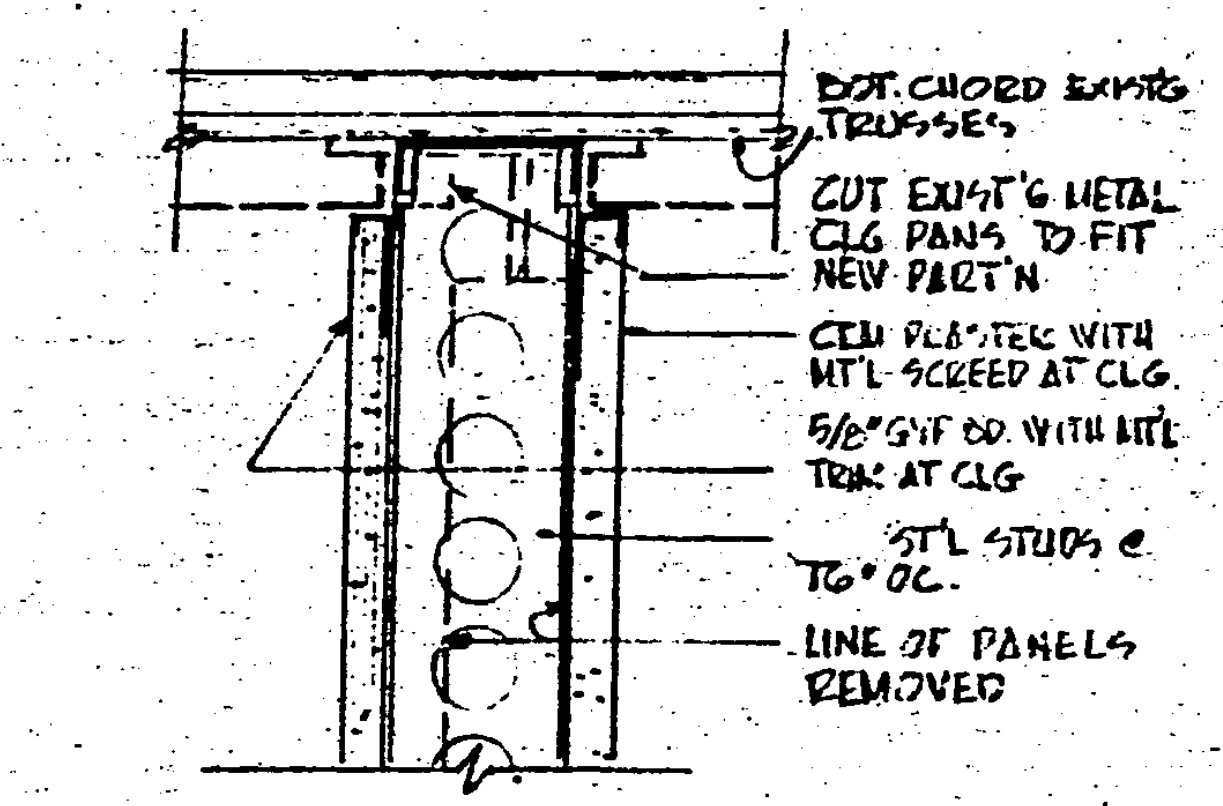
PARTITION
SCALE 3/4" = 1'-0" TYPICAL ACROSS TRUSSES



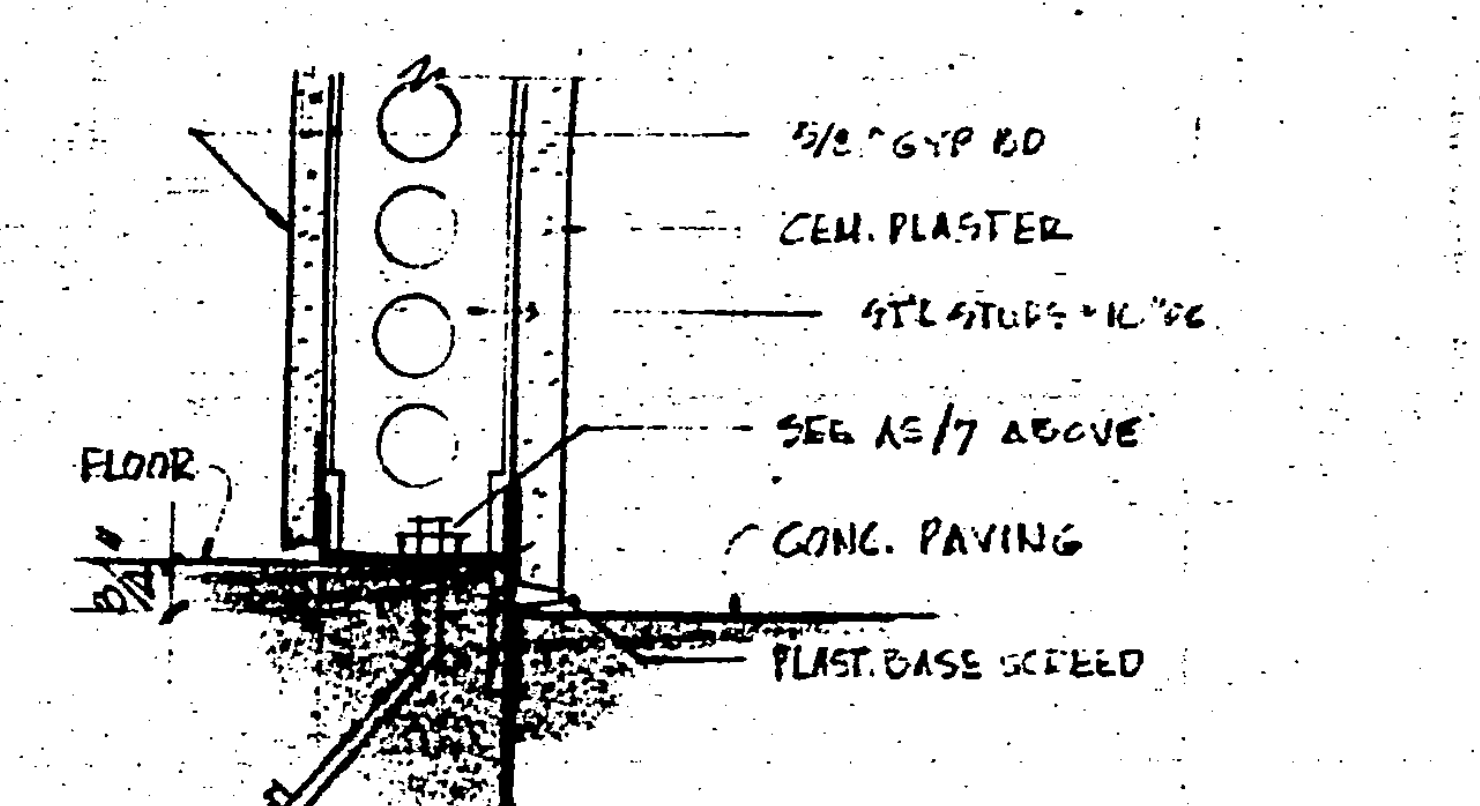
EXT. PLASTER WALL
SCALE 1/2" = 1'-0"



EXT. FOOTING - STUD WALL
SCALE 1/2" = 1'-0"



EXT. PLASTER WALL
SCALE 1/2" = 1'-0"



EXT. FOOTING - STUD WALL
SCALE 1/2" = 1'-0"

ARCHITECT
 MECHANICAL ENGINEER
 ELECTRICAL ENGINEER
 STRUCTURAL ENGINEER
 CIVIL ENGINEER

KISTNER, WRIGHT & WRIGHT
 ARCHITECTS AND ENGINEERS
 LOS ANGELES, CALIFORNIA

STATE FIRE MARSHAL
 STATE OF CALIFORNIA
 APPROVED 1-14-67

DEPARTMENT OF GENERAL SERVICES
 INDUSTRIAL AND CONSTRUCTION
 28550 APPROVED JAN 13 1967

CONSTRUCTION DETAILS
 LADERA LINDA SCHOOL
 PALOS VERDES PENINSULA UNIFIED SCHOOL DISTRICT
 ROLLING HILLS CALIFORNIA

DATE 11/10/66
 DRAWN BY
 CHECKED BY
 SHEET NO. **A-5**
 OF SHEETS

CONTRACTOR TO VERIFY ALL DIMENSIONS AT THE JOB