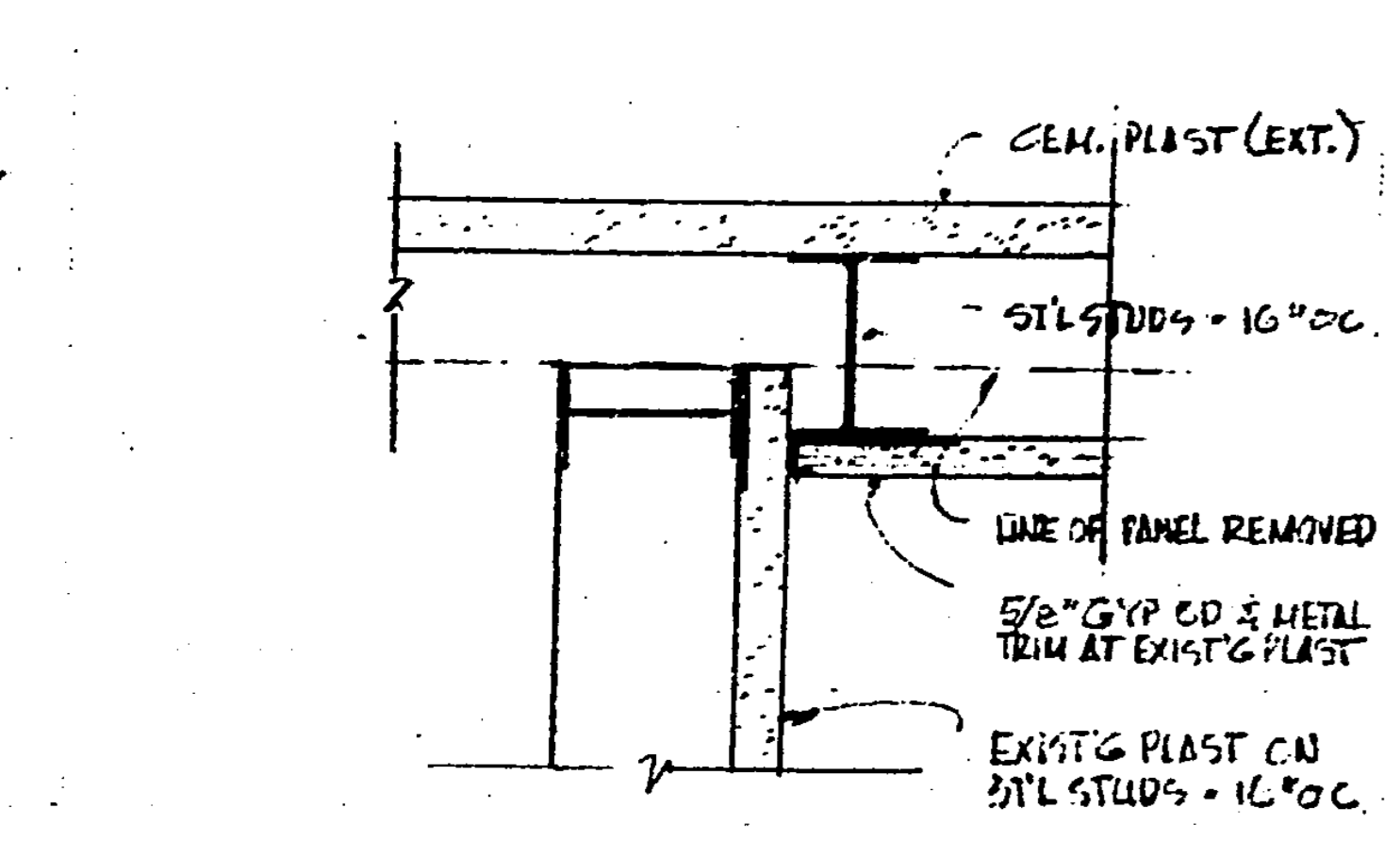
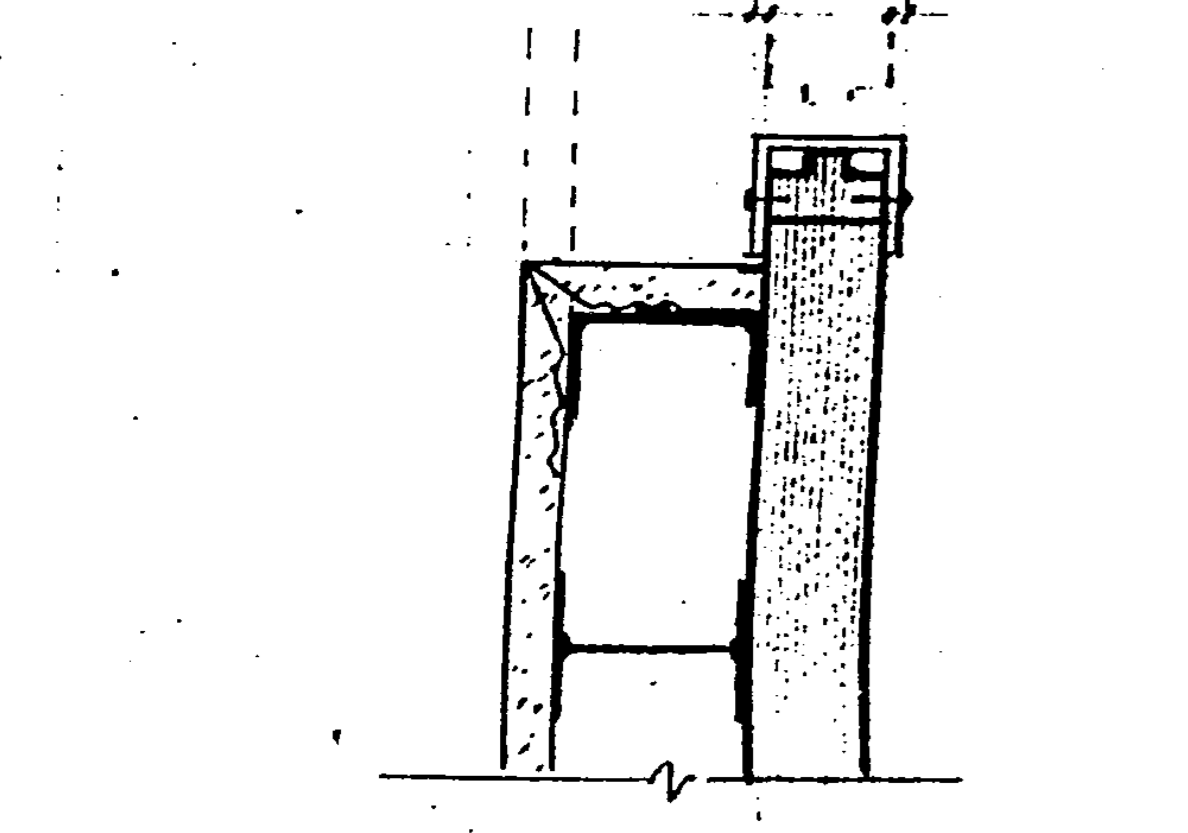


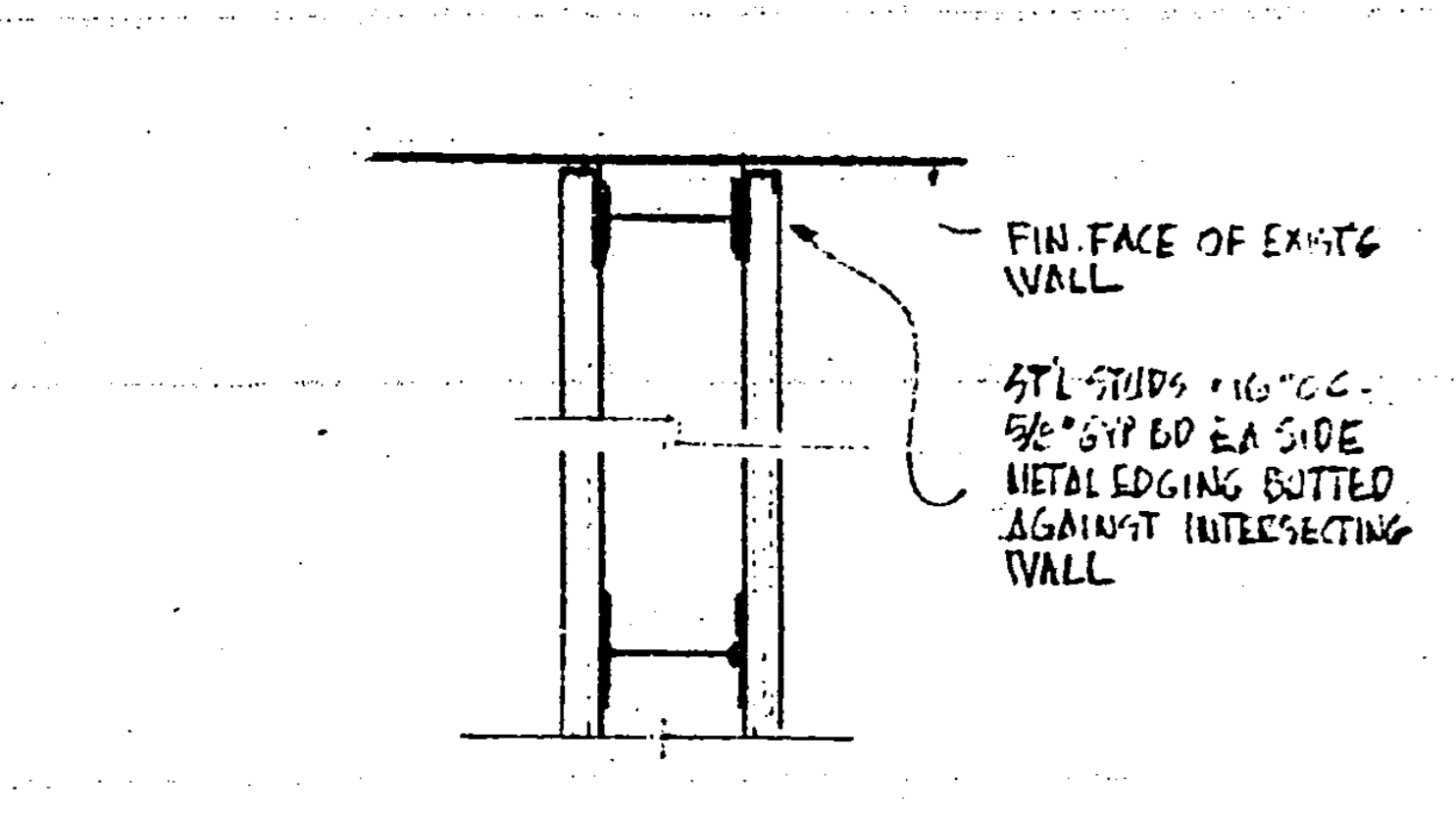
EXTERIOR STUD WALL
HALF SCALE



EXT. STUD WALL - INTERSECTION

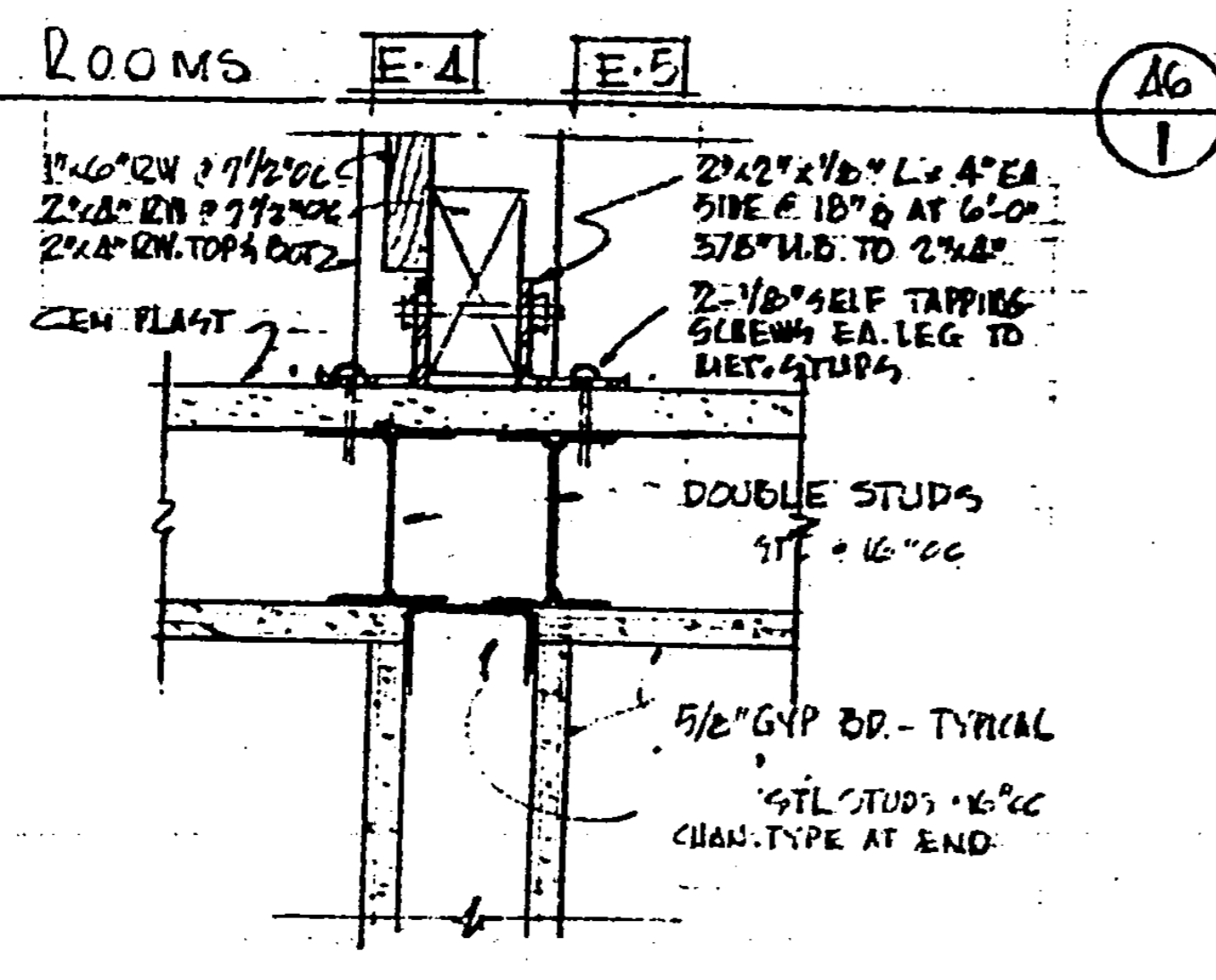


NEW OPENING ALCOVE

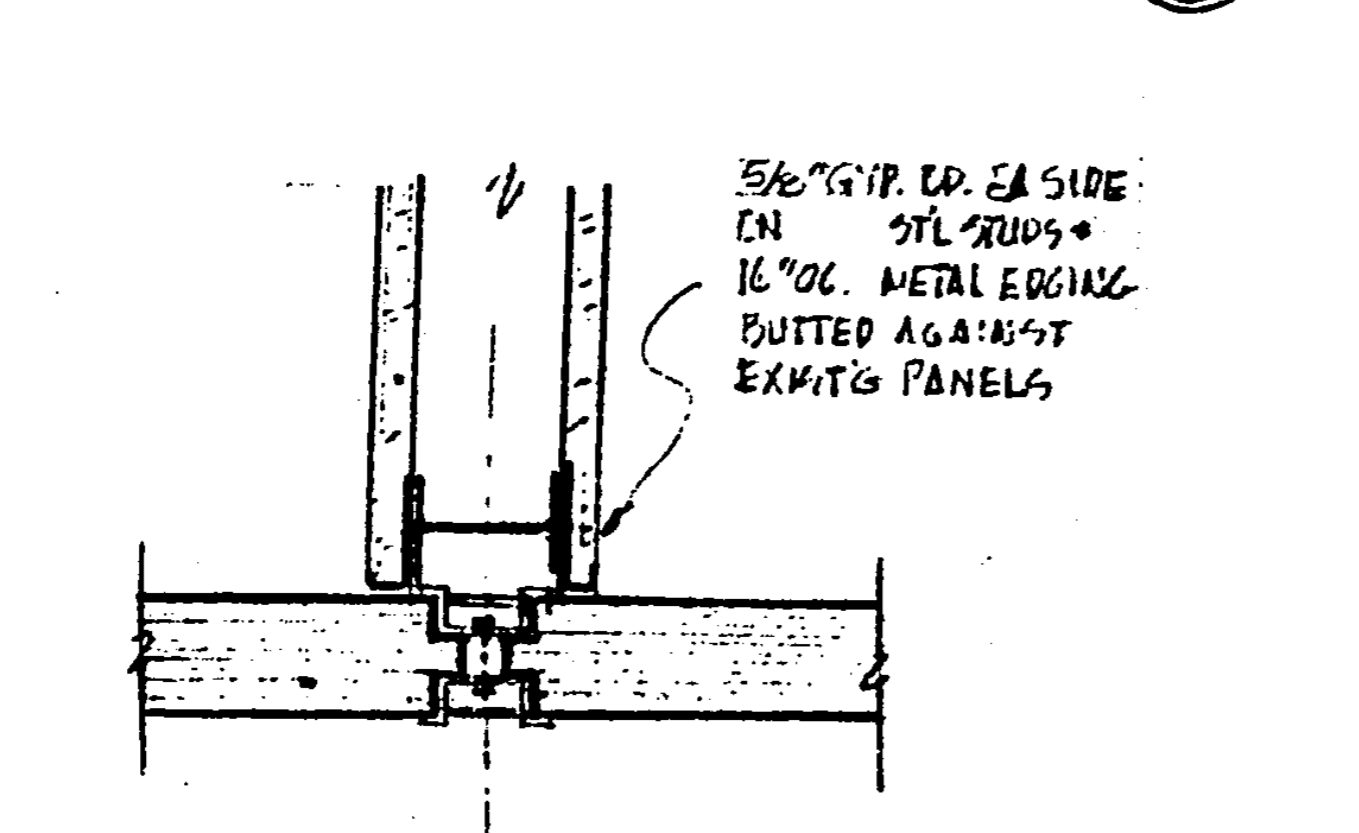


STUD WALL - TYPICAL INTERSECTION

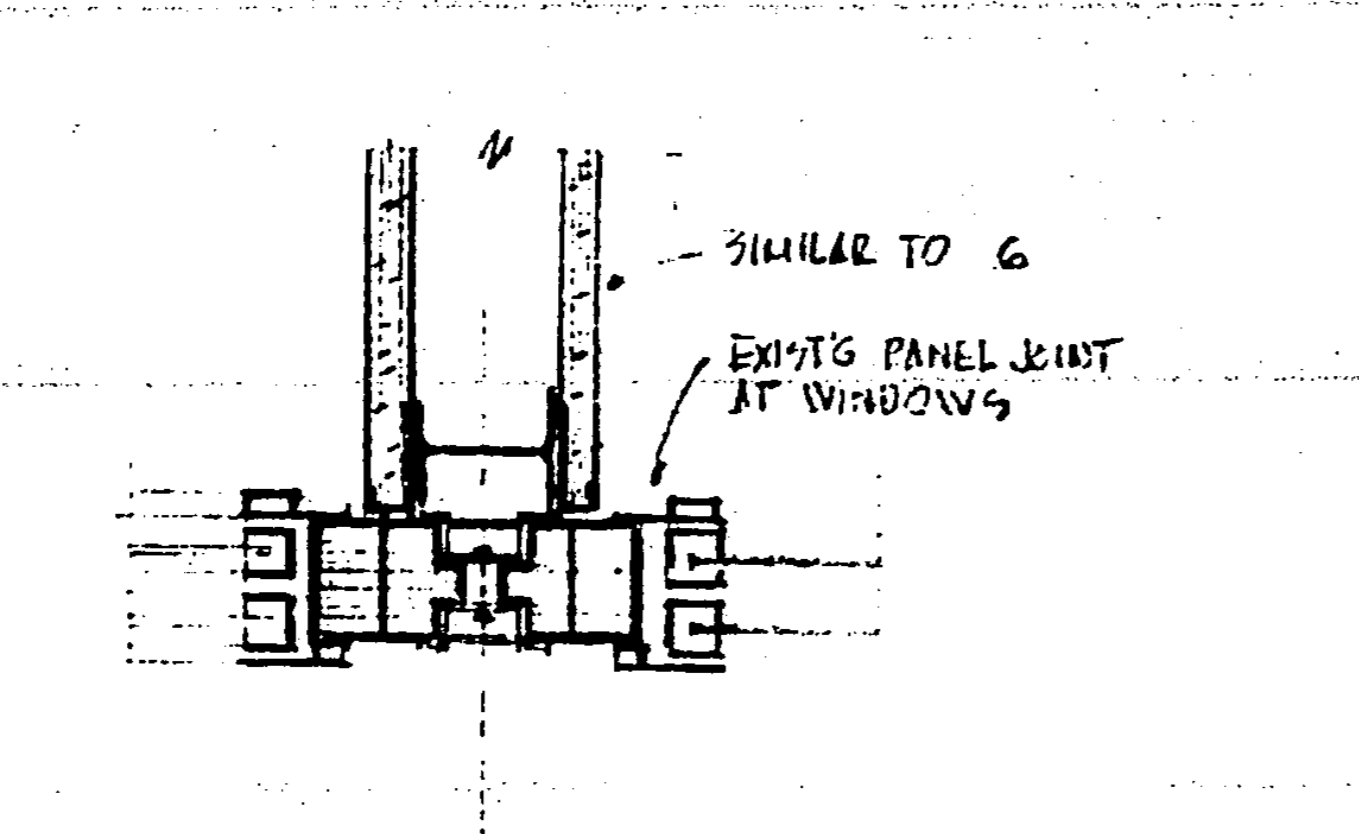
TYPICAL SCALE: 3/8\"/>



EXT. STUD WALL - INTERSECTION

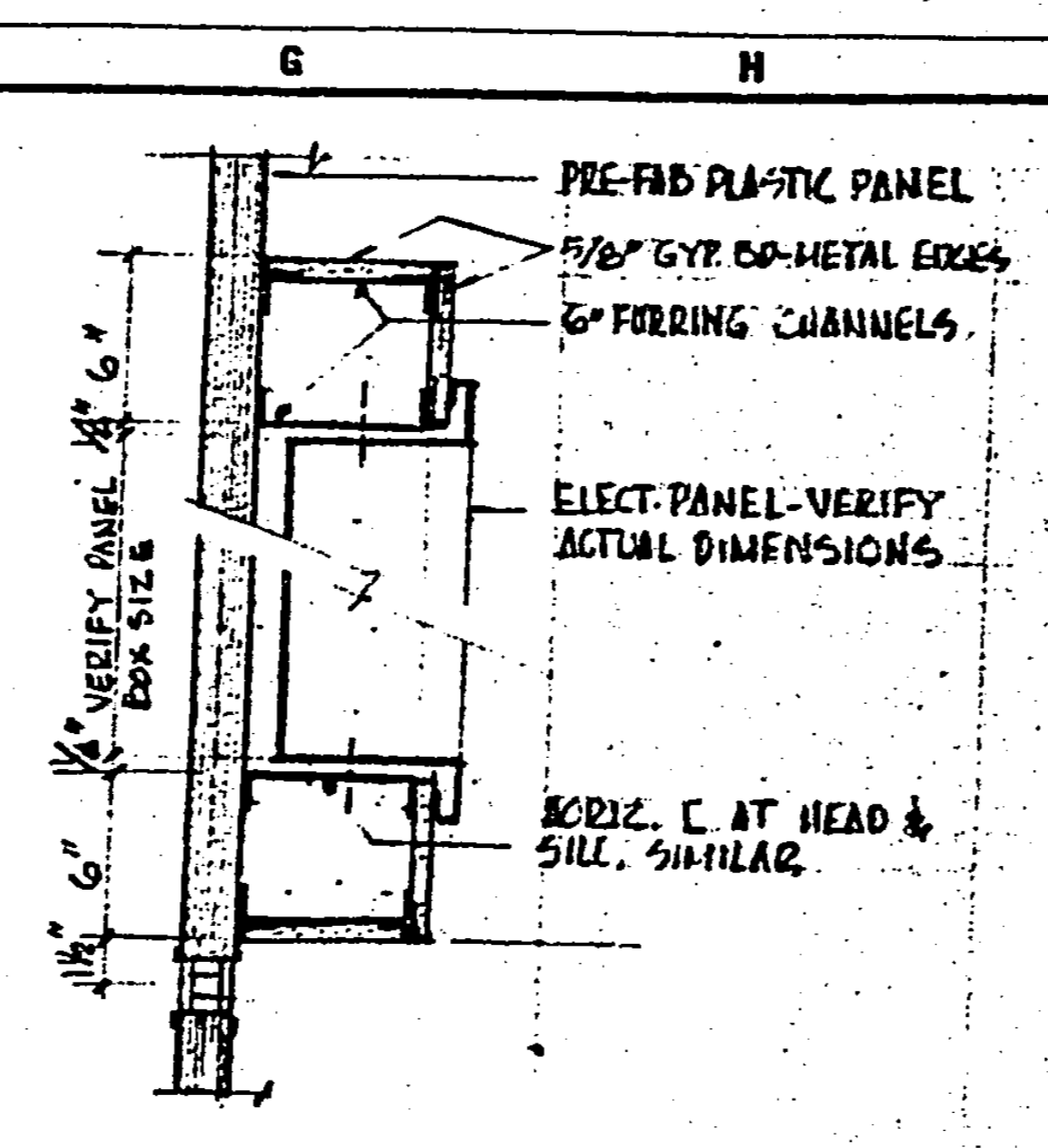


STUD WALL - INTERSECTION - PANEL JOINT

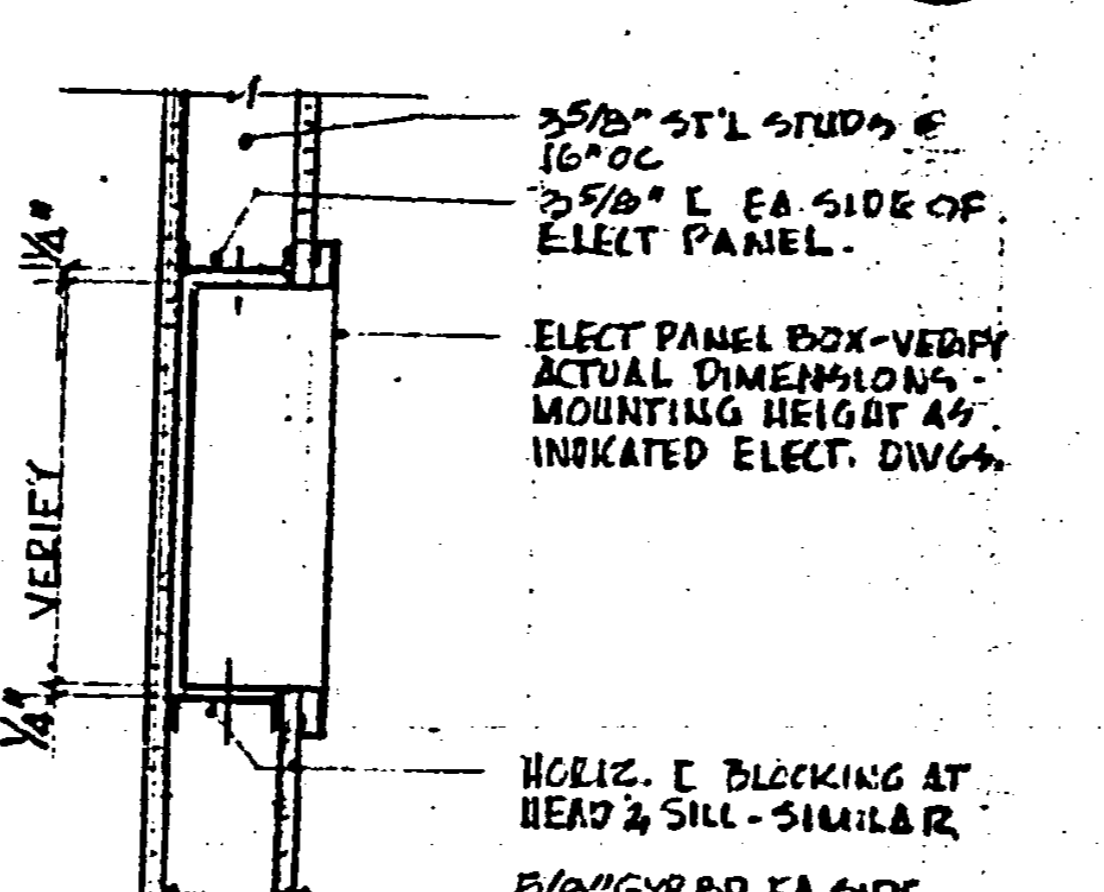


STUD WALL - INTERSECTION - WINDOW

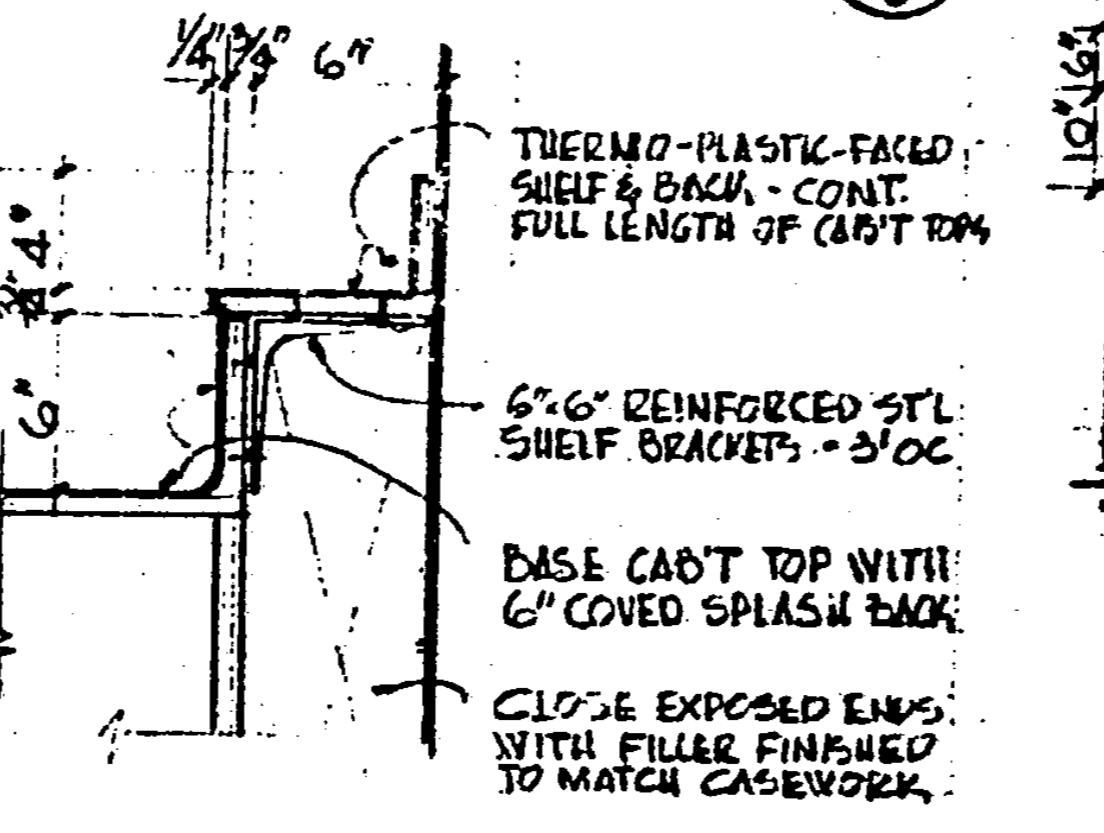
STUD WALL - INTERSECTION - WINDOW



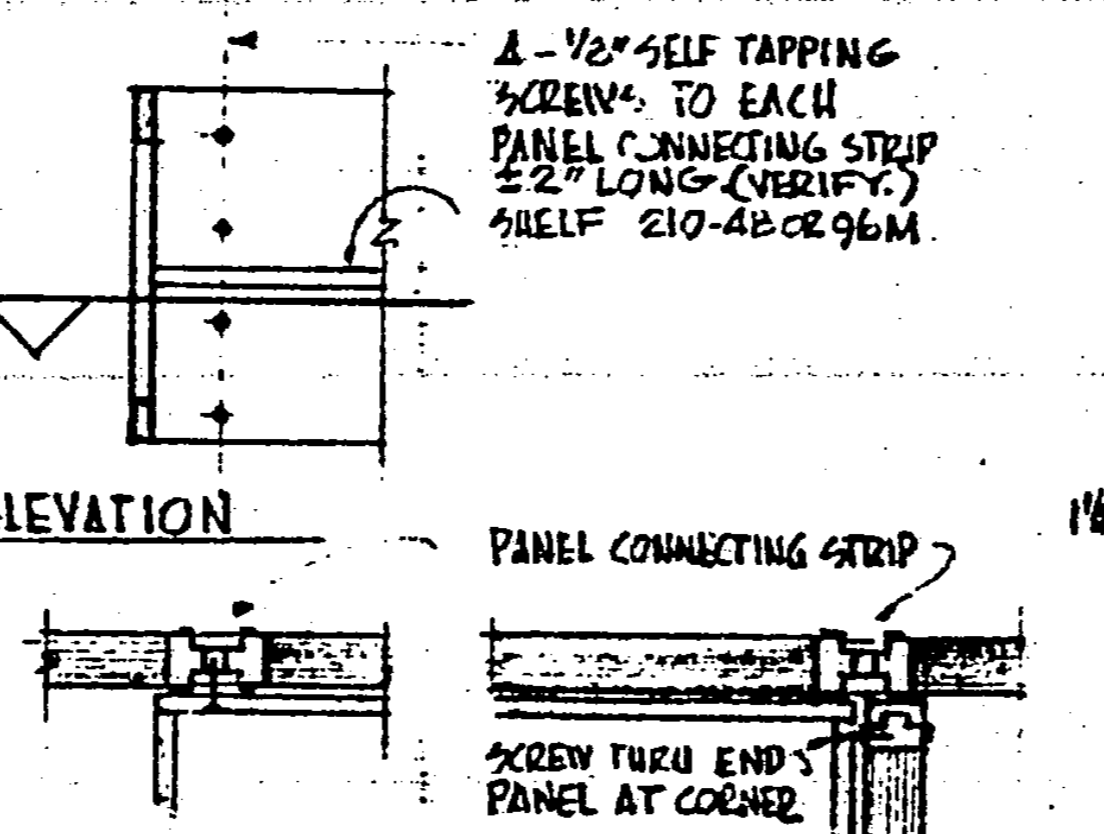
ELECT. PANEL - FURRING



ELECT. PANEL - STUD WALL

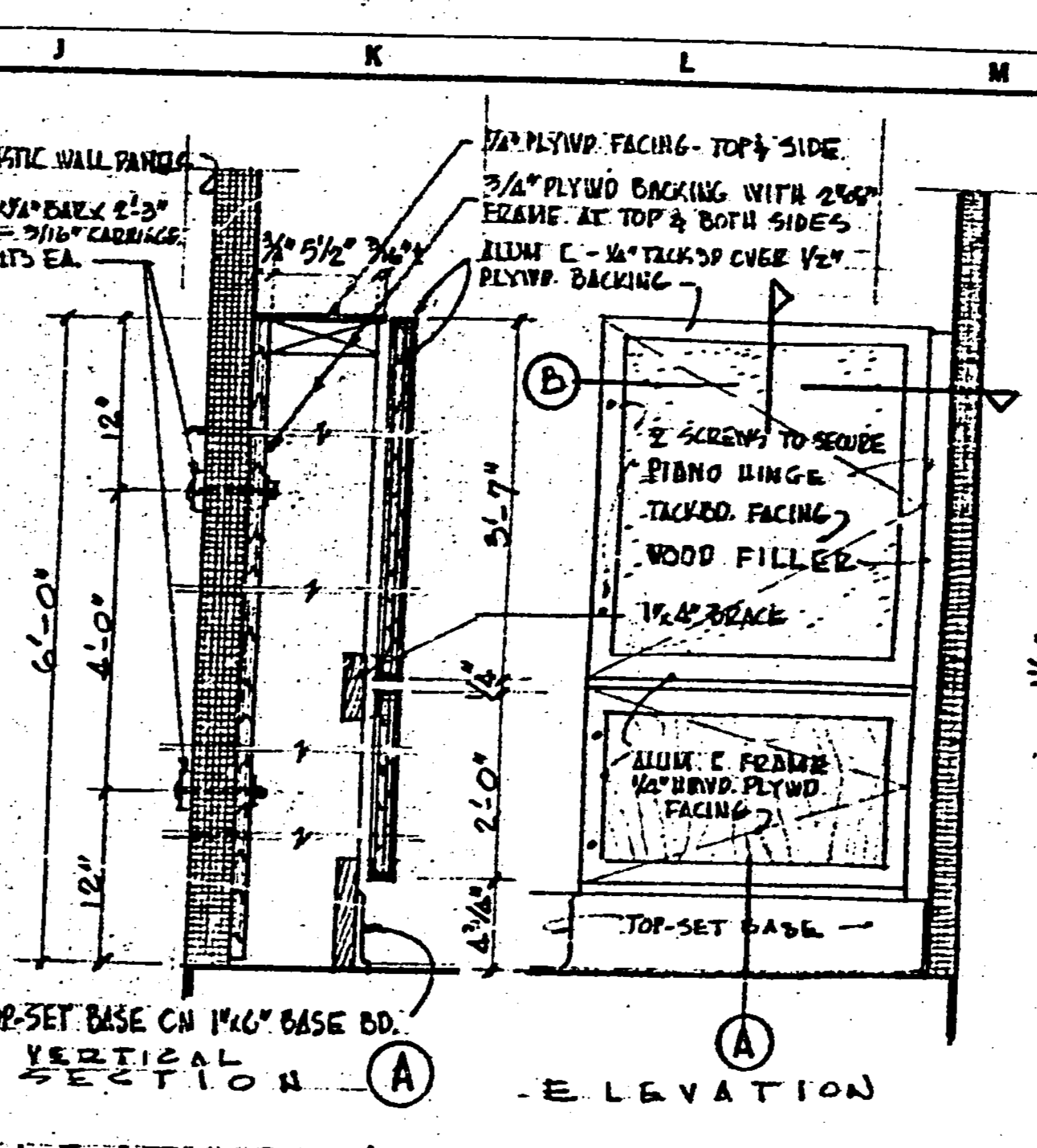


CLOSURE OVER SINKS

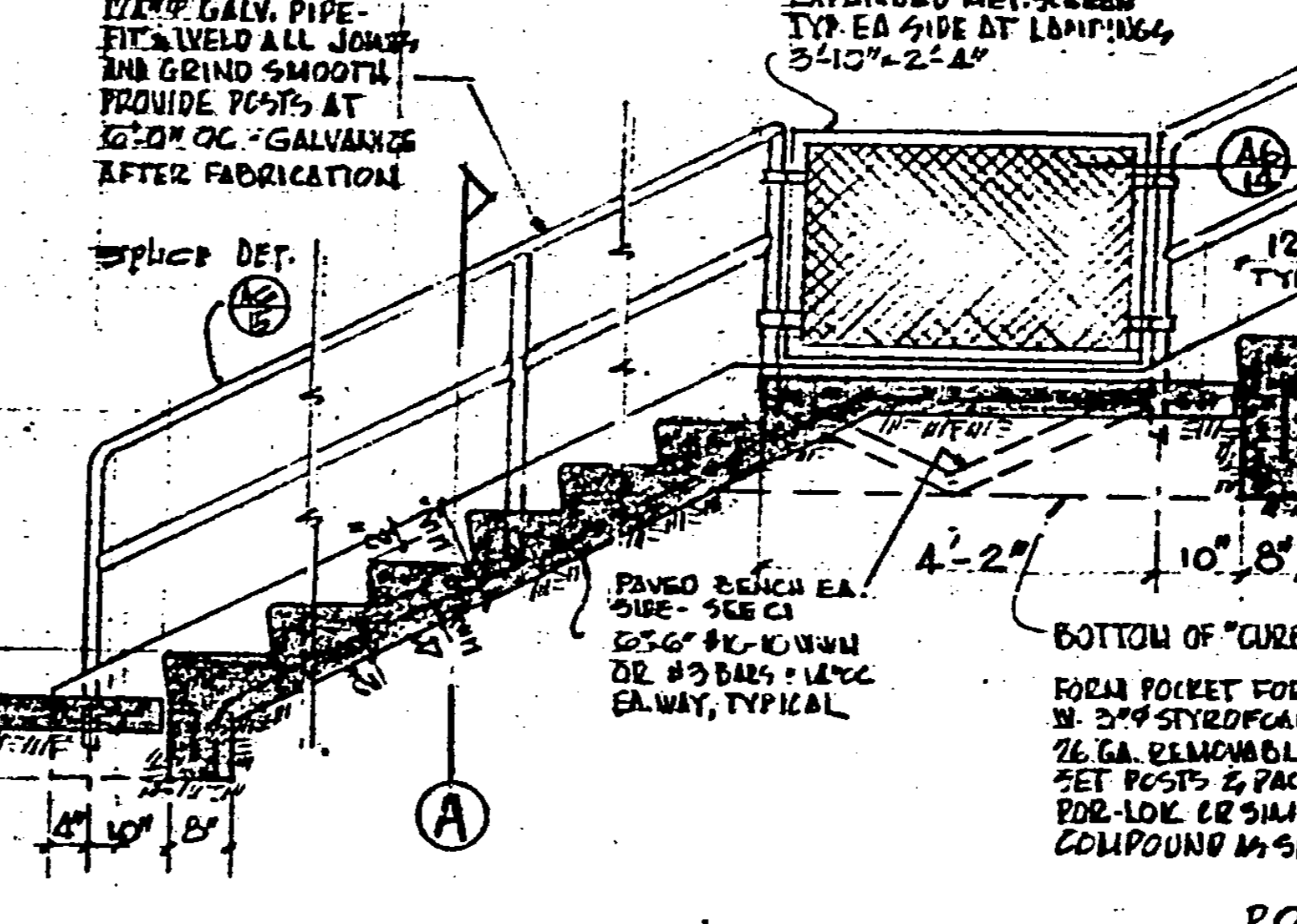


COAT RACK CONNECTION

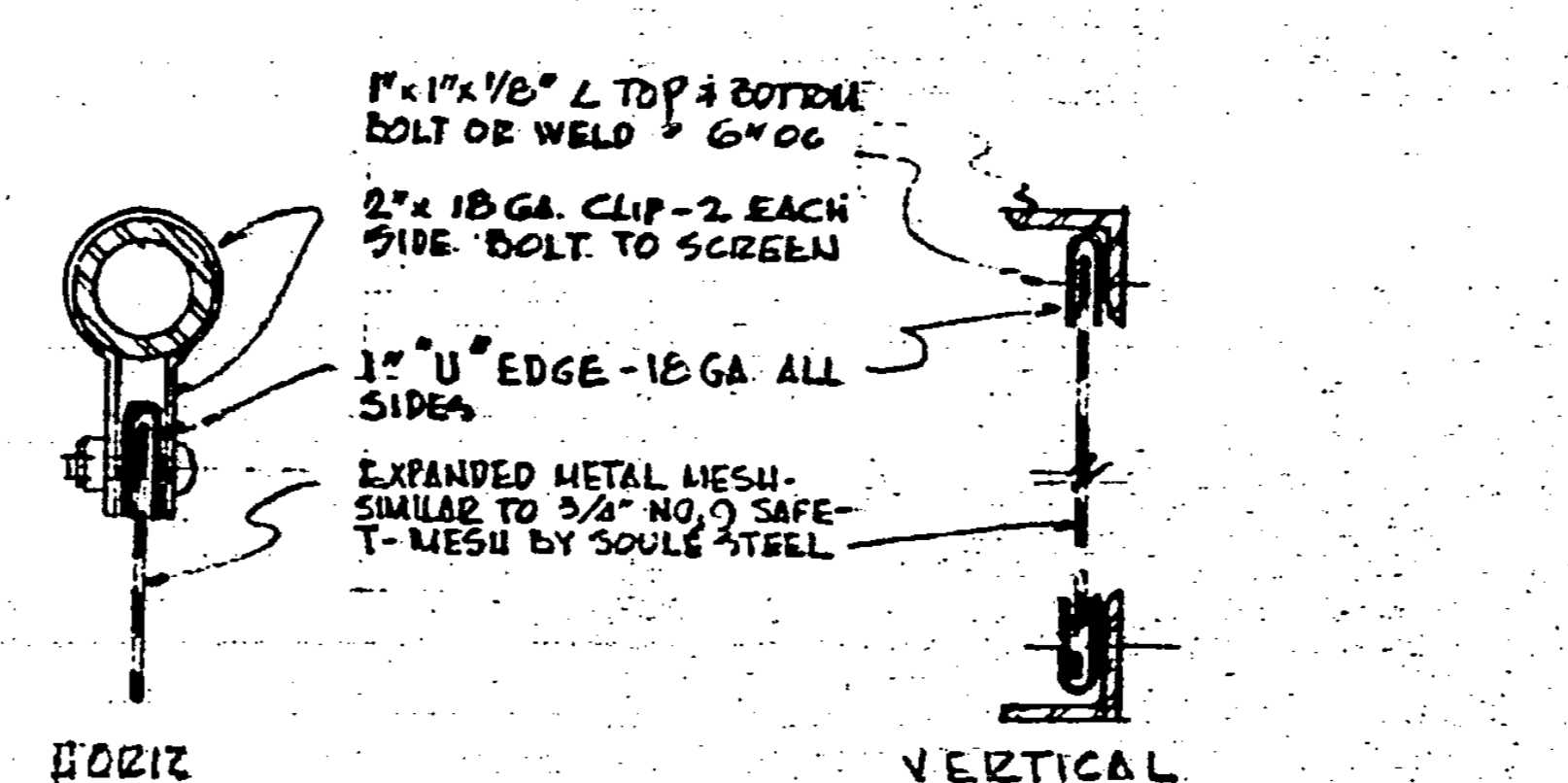
COAT RACK CONNECTION



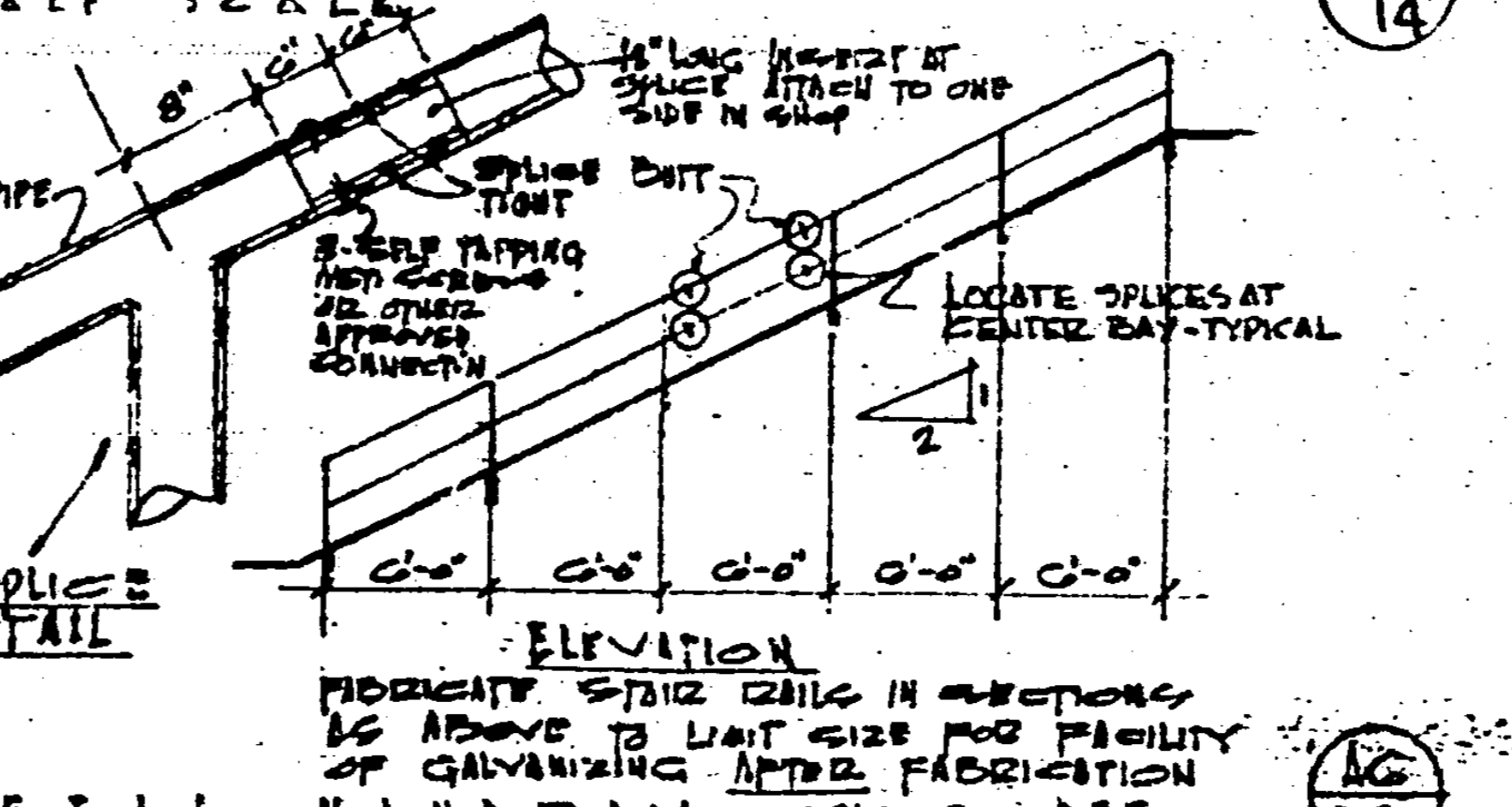
ELECT. PANEL BOX



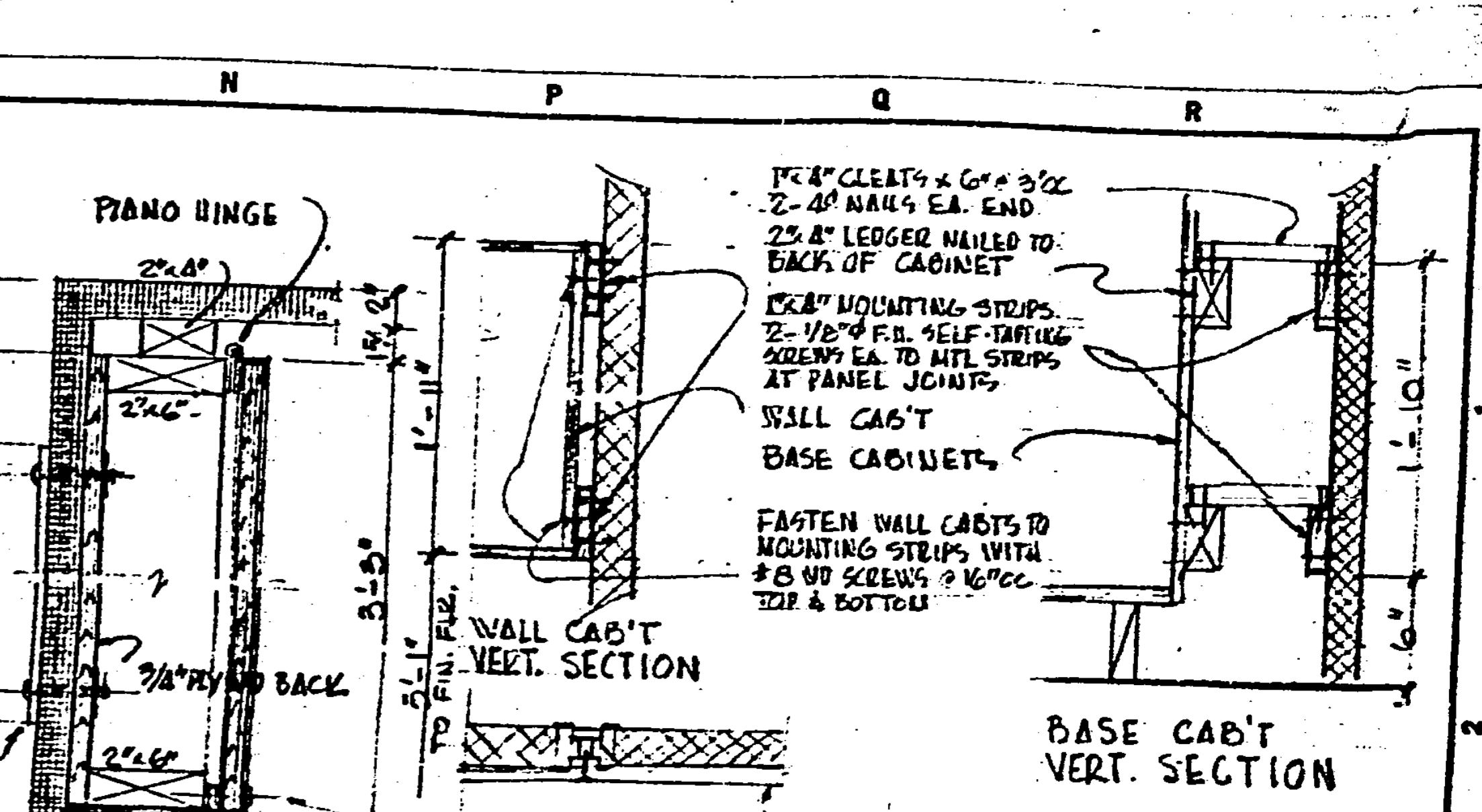
EXTERIOR STAIRS



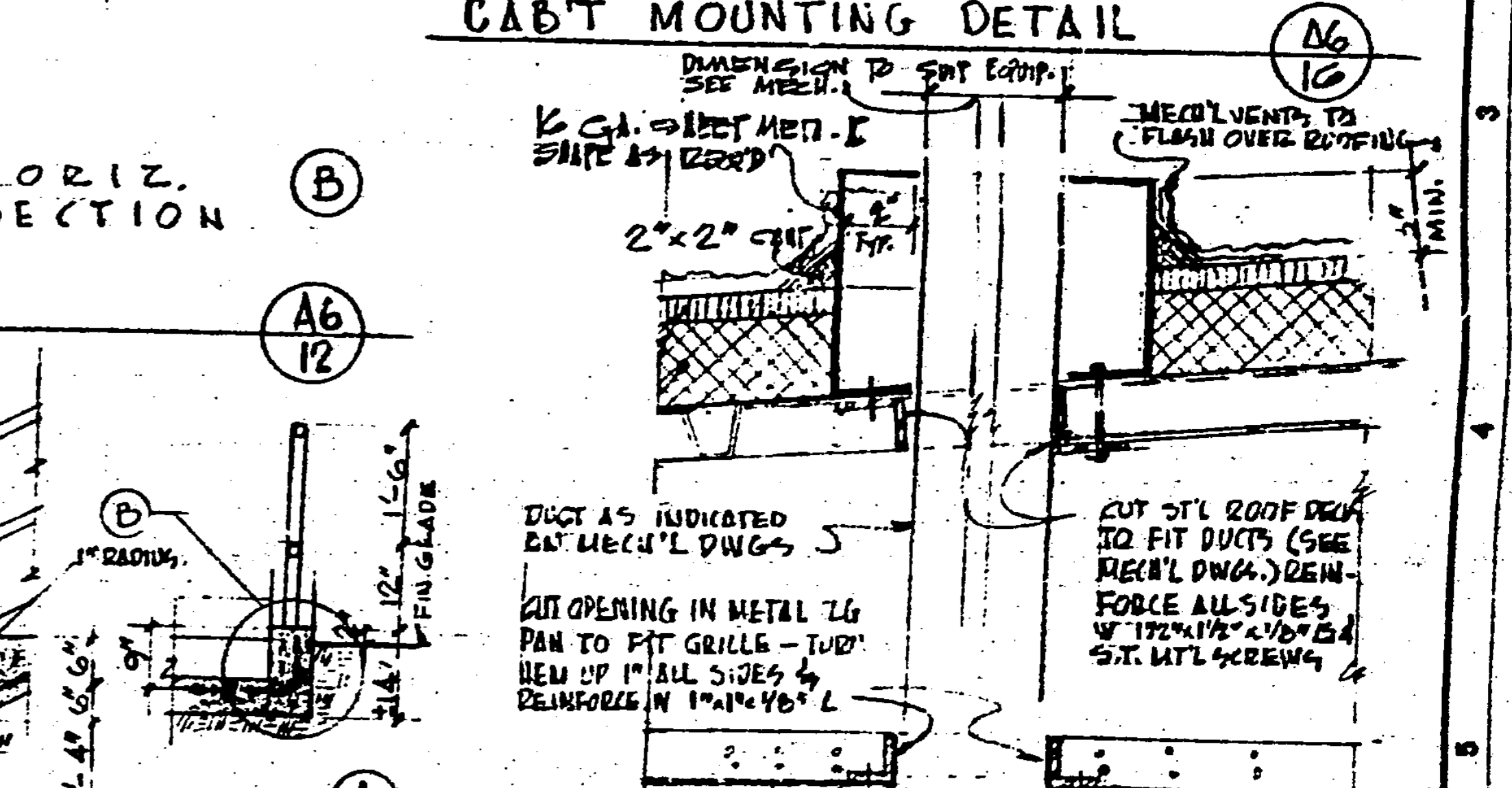
WIRE MESH SCREENS - STAIRS



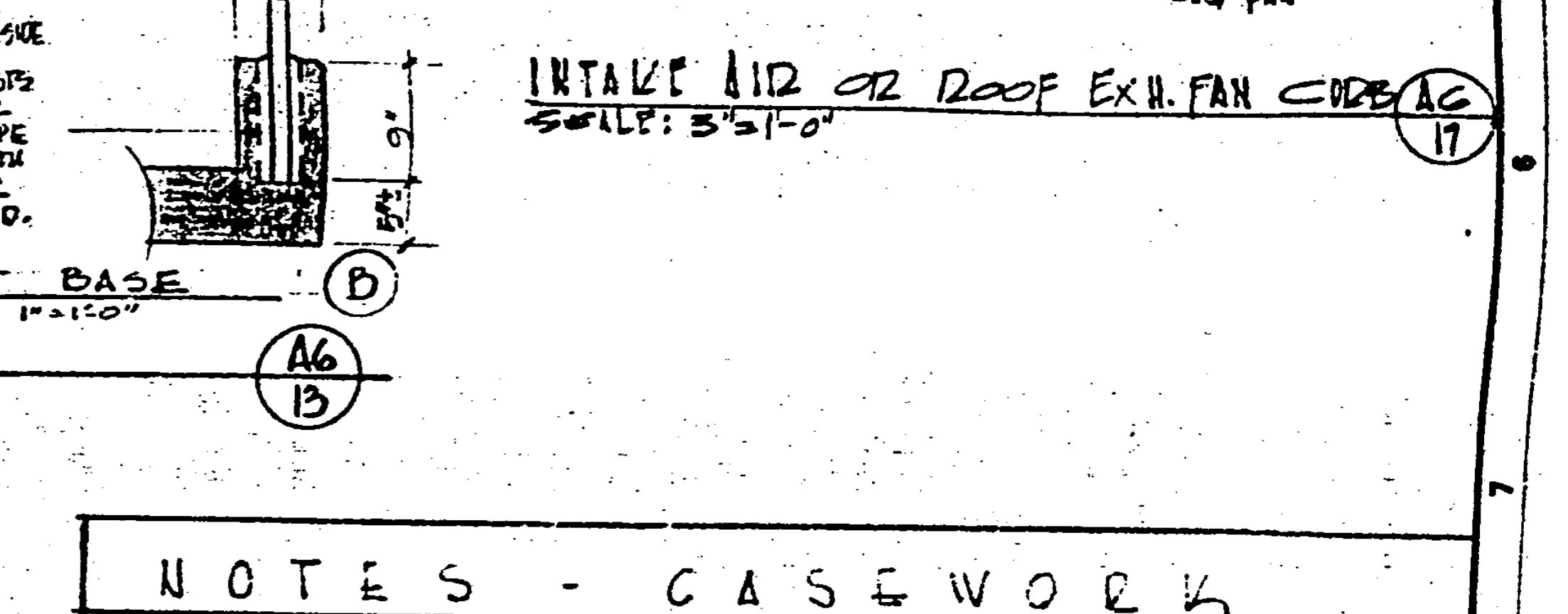
METAL HANDRAIL SPLICE DET.



CABT MOUNTING DETAIL



INTAKE AIR OR ROOF EXH. FAN CURB



POST BASE

NOTES - CASEWORK

- EXISTING CASEWORK NOT TO BE REMOVED BY OWNER.
- EXCEPT AS NOTED, ALL CASEWORK SHALL BE INDIVIDUAL UNITS WITH SEPARATE TOPS, AND FINISHED ON ALL SIDES.
- SINK TOP IN DOOR FROM A-2 TO BE A CONTINUOUS UNIT OVER BATH CABINETS.
- INDIVIDUAL SINK CABINETS TO HAVE "BEVELLED" DRIPLESS EDGES SIMILAR TO "AMERGE" AS MFG BY AMCO OF PASADENA, CALIF.
- WHEREVER SPLASH BACKS OR ENDS ARE INDICATED THEY SHALL BE COVERED.
- ALL TOPS TO BE THERMO-PLASTIC FACED & SELF-EDGED.
- WALL CABINETS TO BE ATTACHED TO CONTINUOUS MOUNTING STRIPS AS SHOWN.
- LOCATE BASE CABINETS BUT DO NOT ATTACH TO PRE-FAB WALLS EXCEPT AS DETAILED (AT SINKS).
- CLOSE SPACES BETWEEN ADJOINING CABINETS AND AT OPEN ENDS WITH FILLED STRIPS FINISHED TO MATCH CABINETS.
- UNIT "NUMBERS" USED REPRESENT "EDUCATORS" CATALOGUE NUMBERS (EXCEPT WHERE "POLASKI" NOS ARE NOTED) AND ARE INTENDED TO INDICATE A GENERAL FORM AND STYLE. ACCEPTABLE CASEWORK WILL NOT BE LIMITED TO THESE MANUFACTURERS PROVIDED IT MEETS REQUIREMENTS INDICATED AND SPECIFIED.

DATE: 28.5.50 APPROVED: JAN 18 1967

CONTRACTOR TO VERIFY ALL DIMENSIONS AT THE JOB.

Richard H. Hanks
ARCHITECT

Charles R. Wright
STRUCTURAL ENGINEER

MECHANICAL ENGINEER
ELECTRICAL ENGINEER
CIVIL ENGINEER

KISTNER, WRIGHT & WRIGHT
ARCHITECTS AND ENGINEERS
LOS ANGELES, CALIFORNIA

STATE FIRE MARSHAL
STATE OF CALIFORNIA

APPROVED: *[Signature]*

CONSTRUCTION AND MISCELLANEOUS DETAILS

LADERA LINDA SCHOOL
PALOS VERDES PENINSULA UNIFIED SCHOOL DISTRICT
ROLLING HILLS, CALIFORNIA

DATE: 21 NOV 66
DR BY: *[Signature]*
CHECKED BY: *[Signature]*
JOB NO: 66-6
SHEET NO: A-6
OF SHEETS: 6