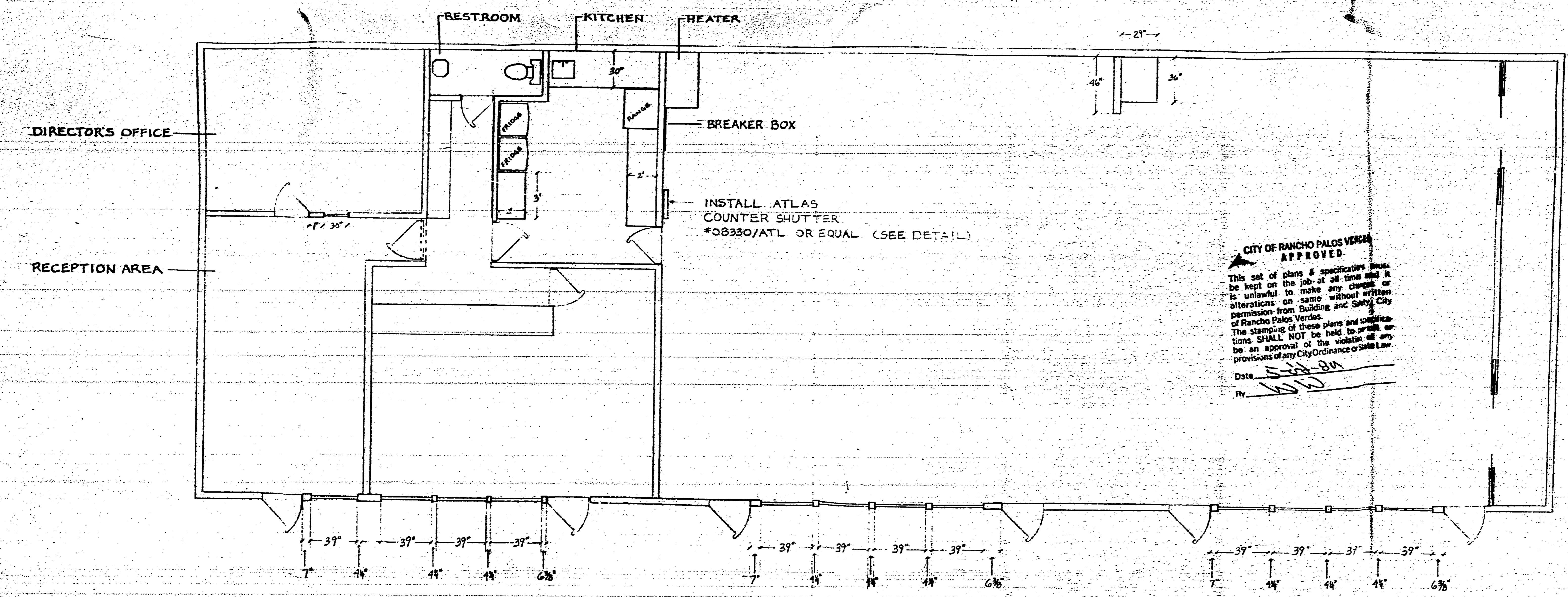
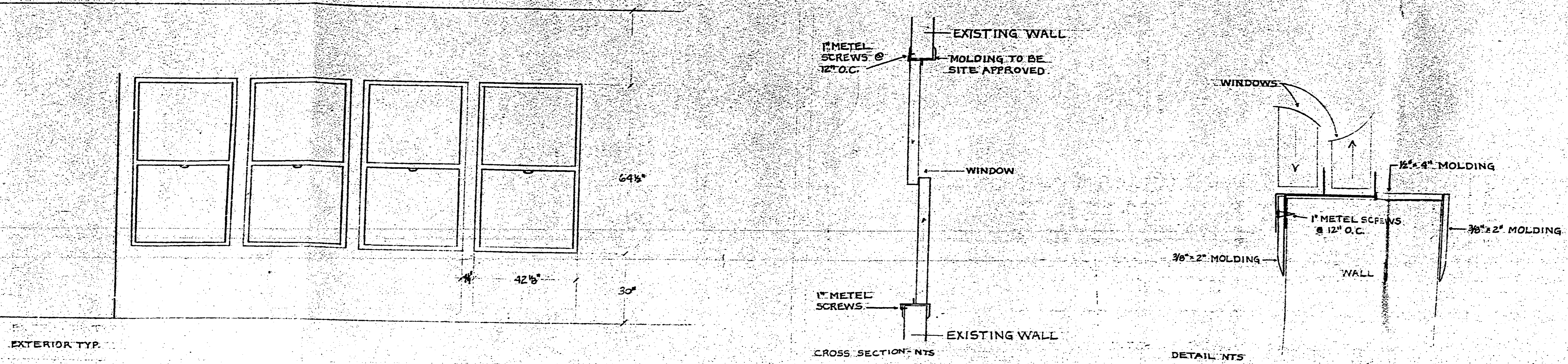


WINDOW & DOOR PLAN

GENERAL NOTES:

1. REPLACE EXISTING WINDOWS WITH 1500A SERIES STANDARD FRAME WITH SCREEN.
2. CITY TO SUPPLY PLEXI-GLASS PAYNES PER MANUFACTURER SPECIFICATIONS.
3. POCKET SLIDER SHALL BE HOLLOW CORE BIRCH.
4. CONTRACTOR TO SUPPLY WINDOW FRAMES & INSTALLATION.



CITY OF RANCHO PALOS VERDES APPROVED

This set of plans & specifications shall be kept on the job at all times and it is unlawful to make any change or alterations on same without written permission from Building and Safety City of Rancho Palos Verdes. The stamping of these plans and specifications SHALL NOT be held to prove or be an approval of the violation of any provisions of any City Ordinance or State Law.

Date: 5/22/81
By: WLD

REVISIONS	BY

LADERA LINDA COMMUNITY CENTER
32201 FORRESTAL DRIVE
RANCHO PALOS VERDES, CA, 90274

DRAWN	W. WARRINER
CHECKED	
DATE	
SCALE	1/4" = 1'
JOB NO.	
SHEET	2
OF SHEETS	