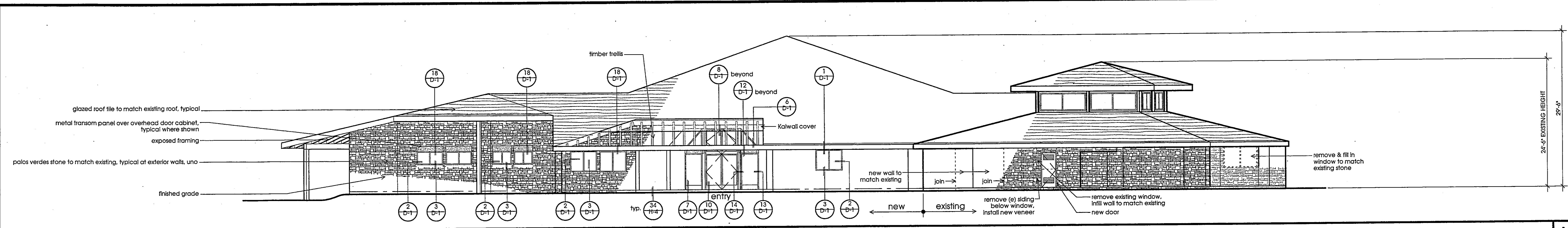
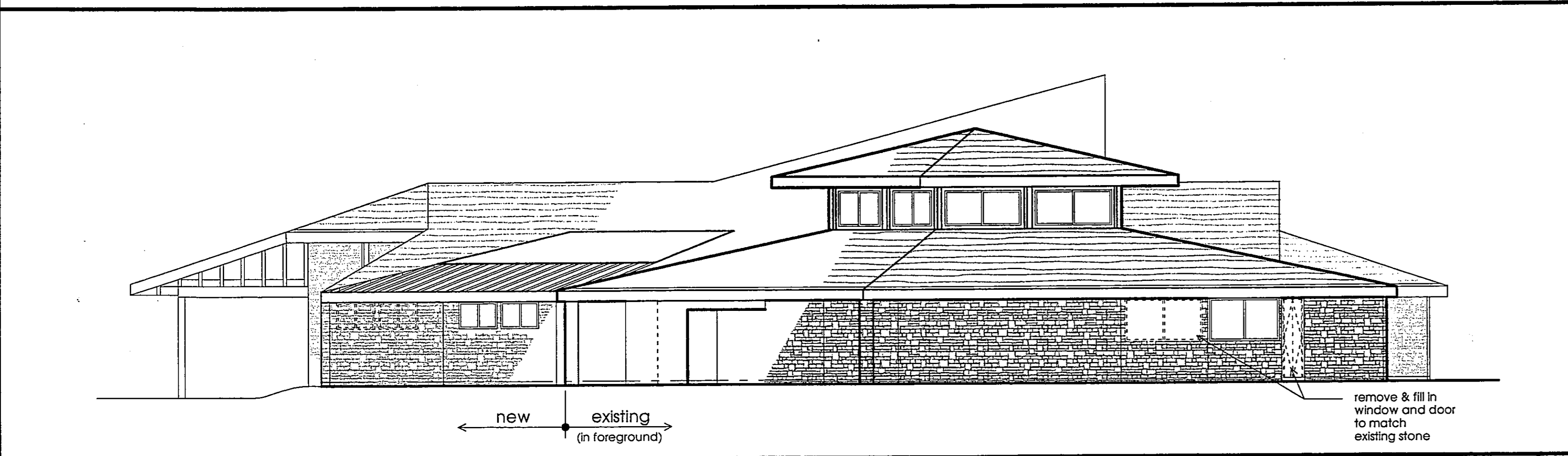


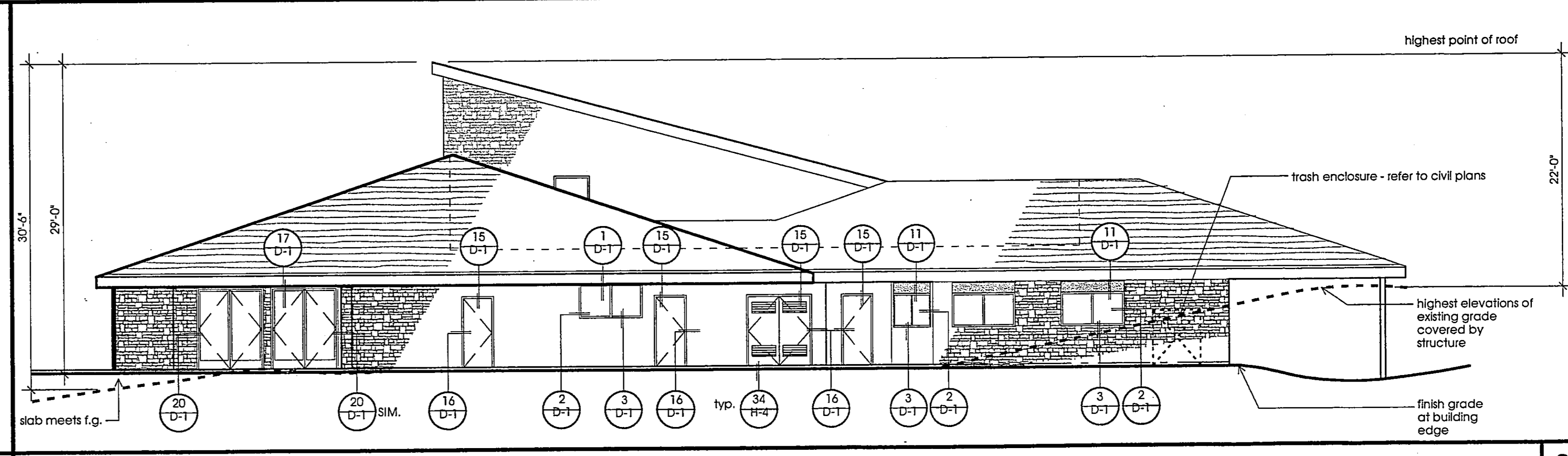
1. text
2. amendment
3. wall
4. floor/ceiling
5. roof
6. hatch
7. border
8. detail
9. paper edges



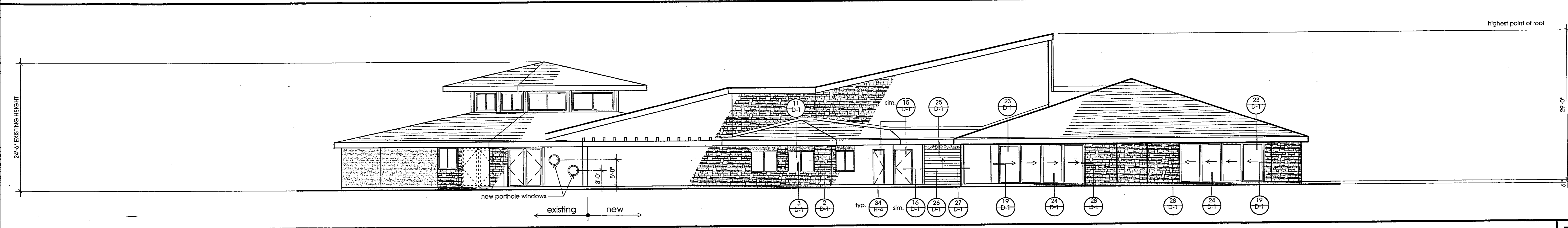
NORTHEAST EXTERIOR ELEVATION Scale: 1/8" = 1'-0" **A**



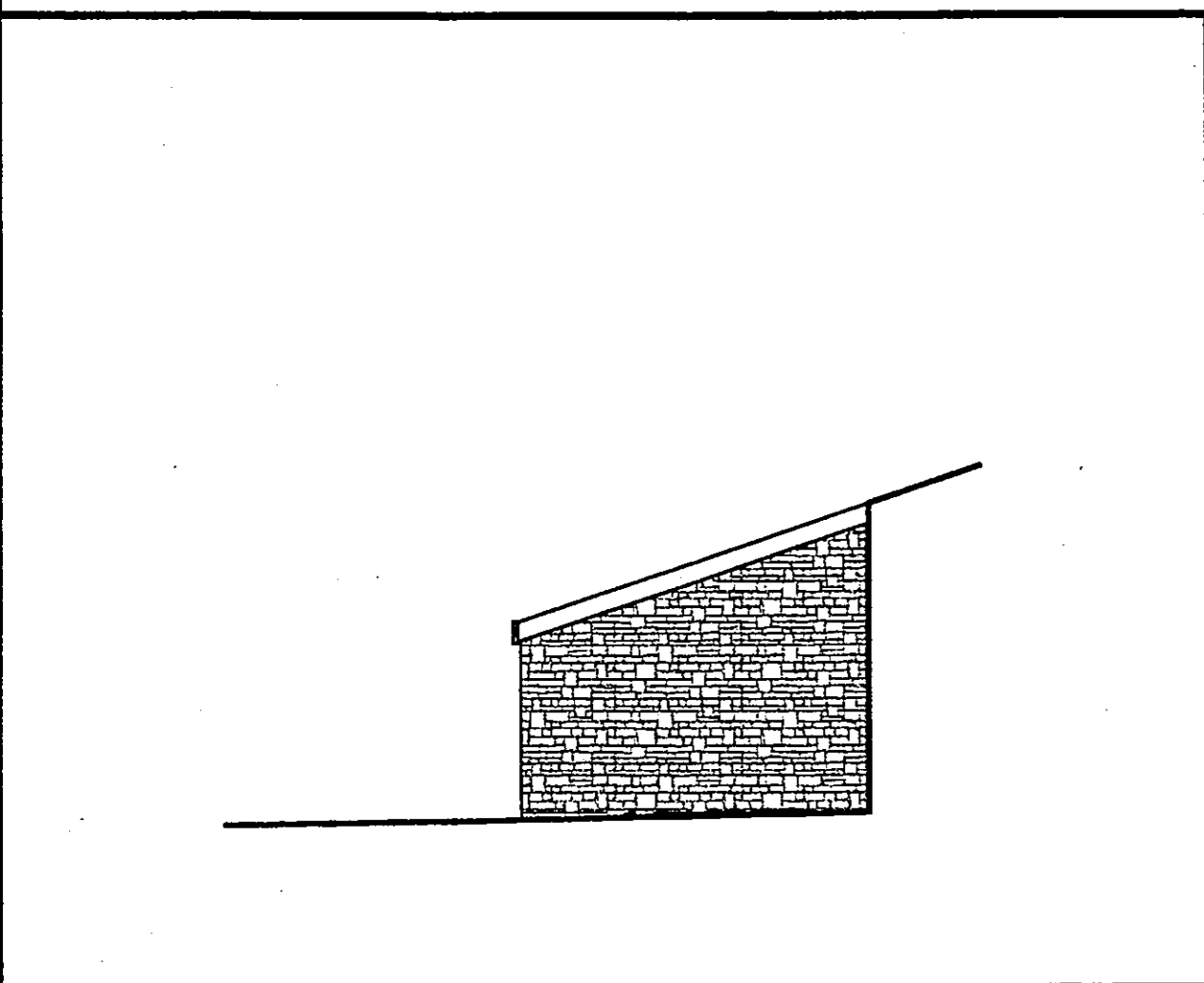
NORTHWEST EXTERIOR ELEVATION Scale: 1/8" = 1'-0" **B**



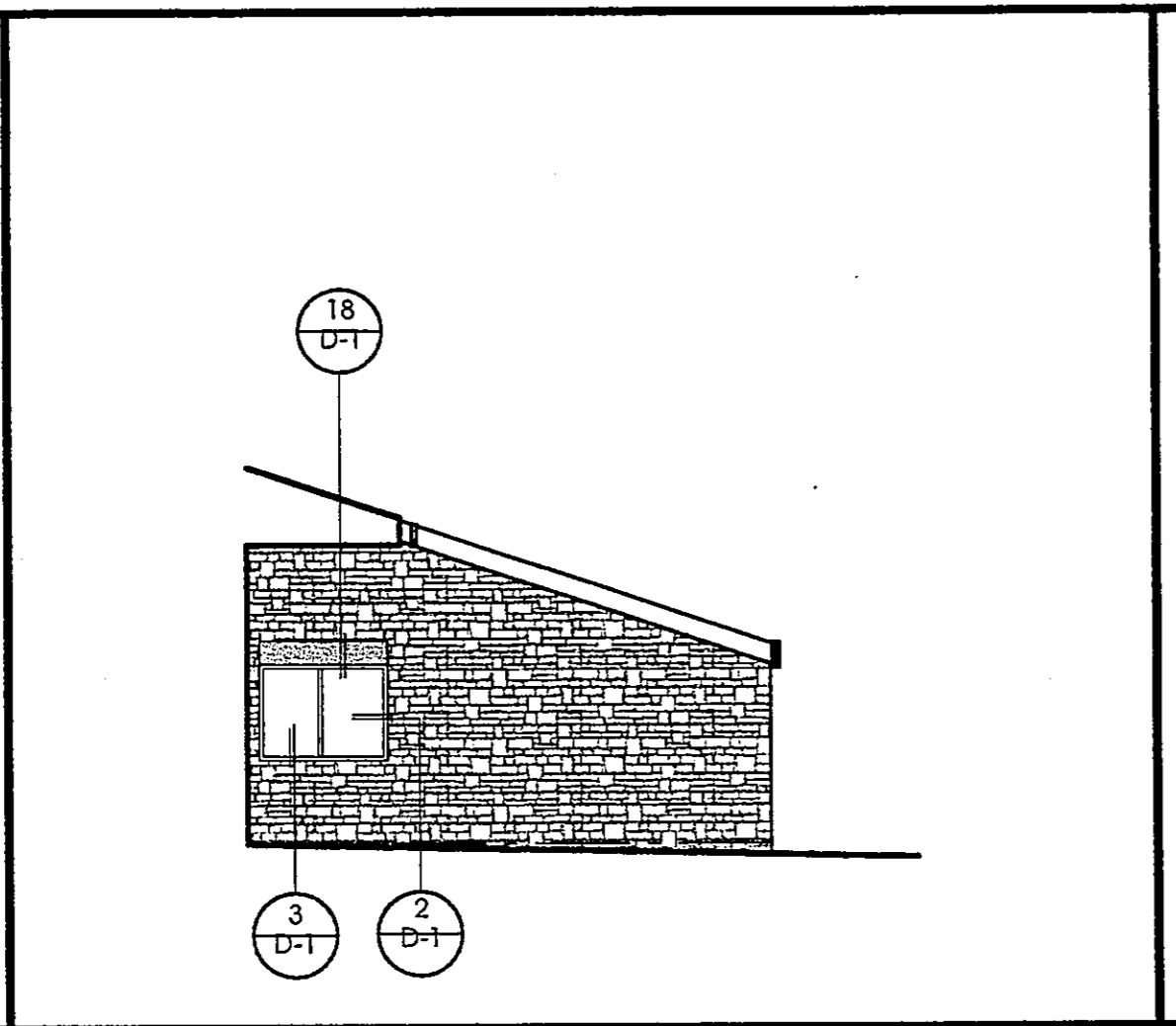
SOUTHEAST EXTERIOR ELEVATION Scale: 1/8" = 1'-0" **C**



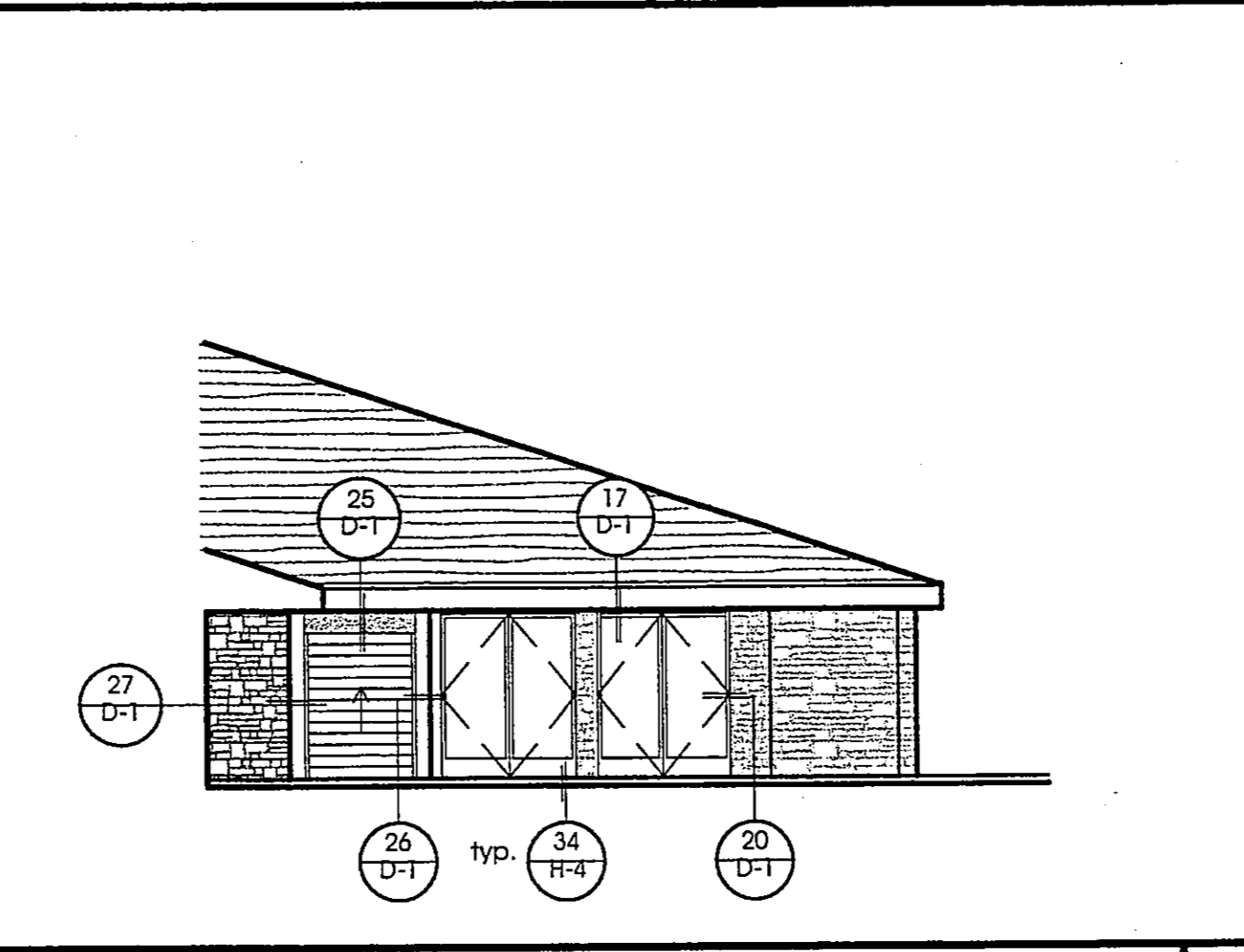
SOUTHWEST EXTERIOR ELEVATION Scale: 1/8" = 1'-0" **D**



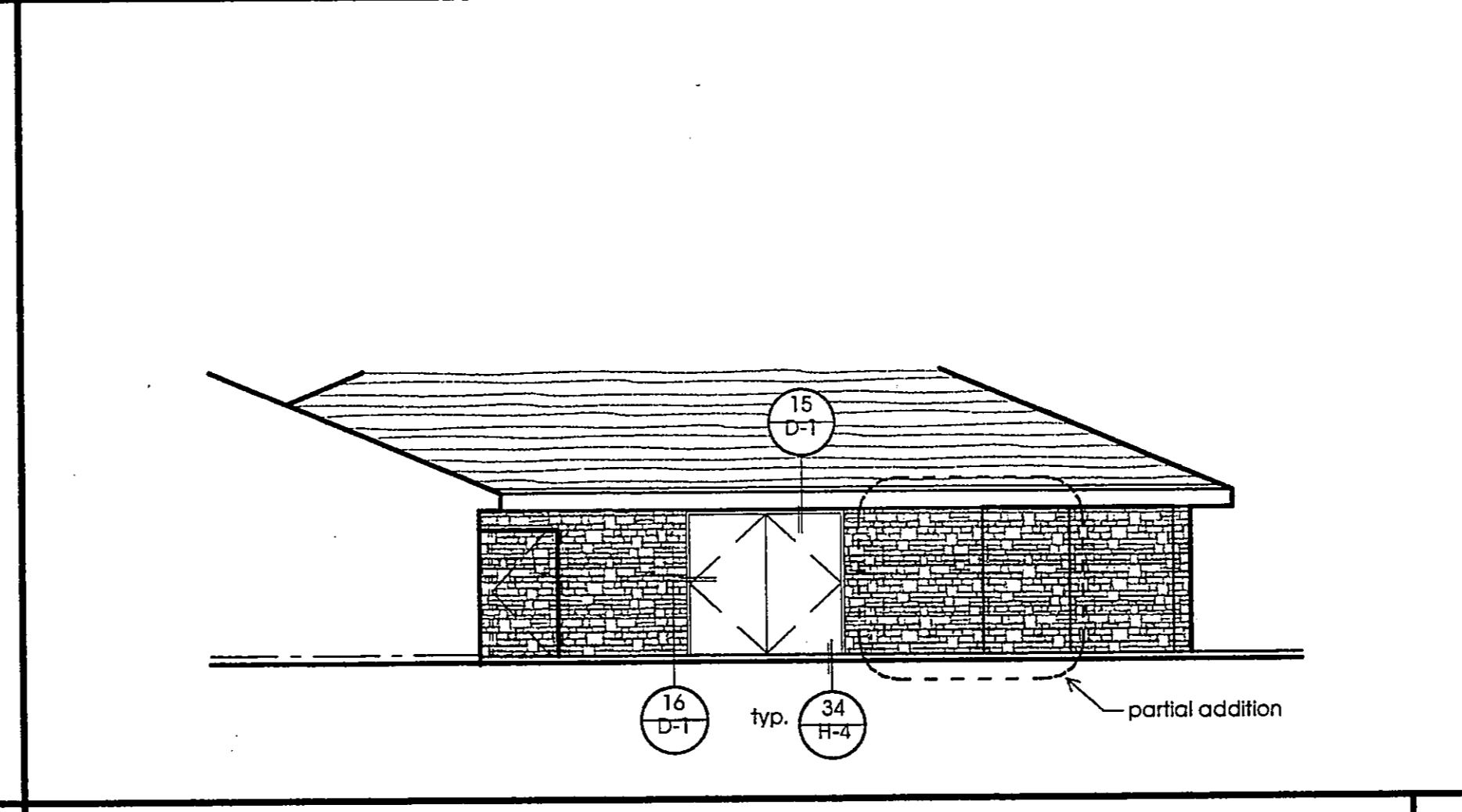
PARTIAL ENTRY ELEVATION Scale: 1/8" = 1'-0" **E**



PARTIAL ENTRY ELEVATION Scale: 1/8" = 1'-0" **F**

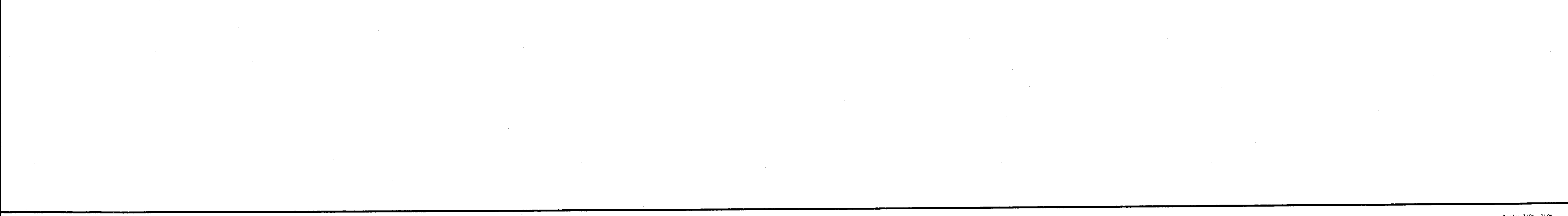


PARTIAL TERRACE ELEVATION Scale: 1/8" = 1'-0" **G**



PARTIAL EXISTING ELEVATION Scale: 1/8" = 1'-0" **H**

PARTIAL ENTRY ELEVATION Scale: 1/8" = 1'-0" **E** **PARTIAL ENTRY ELEVATION** Scale: 1/8" = 1'-0" **F** **PARTIAL TERRACE ELEVATION** Scale: 1/8" = 1'-0" **G** **PARTIAL EXISTING ELEVATION** Scale: 1/8" = 1'-0" **H**



PARTIAL ENTRY ELEVATION Scale: 1/8" = 1'-0" **E** **PARTIAL ENTRY ELEVATION** Scale: 1/8" = 1'-0" **F** **PARTIAL TERRACE ELEVATION** Scale: 1/8" = 1'-0" **G** **PARTIAL EXISTING ELEVATION** Scale: 1/8" = 1'-0" **H**

RON YEO, FAIA ARCHITECT, INC.
 500 JASMINE AVENUE, CORONA DEL MAR
 CALIFORNIA 92625 P: 949-644-8111 F: 949-644-0449
 PATRICK MARR, AIA, PE, ASSOCIATE ARCHITECT



12/23/03 update revisions

POINT VICENTE INTERPRETIVE CENTER EXPANSION
 31501 Palos Verdes Drive West
 Rancho Palos Verdes, CA

Exterior Elevations

DRAWN PM/MG
 CHECKED RY
 DATE 2/1/99
 SCALE 1/8" = 1'-0"
 JOB NO. 95-120
 SHEET

A-4

17 OF 61 SHEETS

Ron Yeo, Architect Inc. expressly reserves its copyright in these plans. These plans are the property of Ron Yeo, Architect Inc. and are to be used only for the project and site for which they were prepared. No part of these plans may be reproduced, stored in a retrieval system, or transmitted in any form or by any means, electronic, mechanical, photocopying, recording, or by any information storage and retrieval system, without the prior written permission of Ron Yeo, Architect Inc.