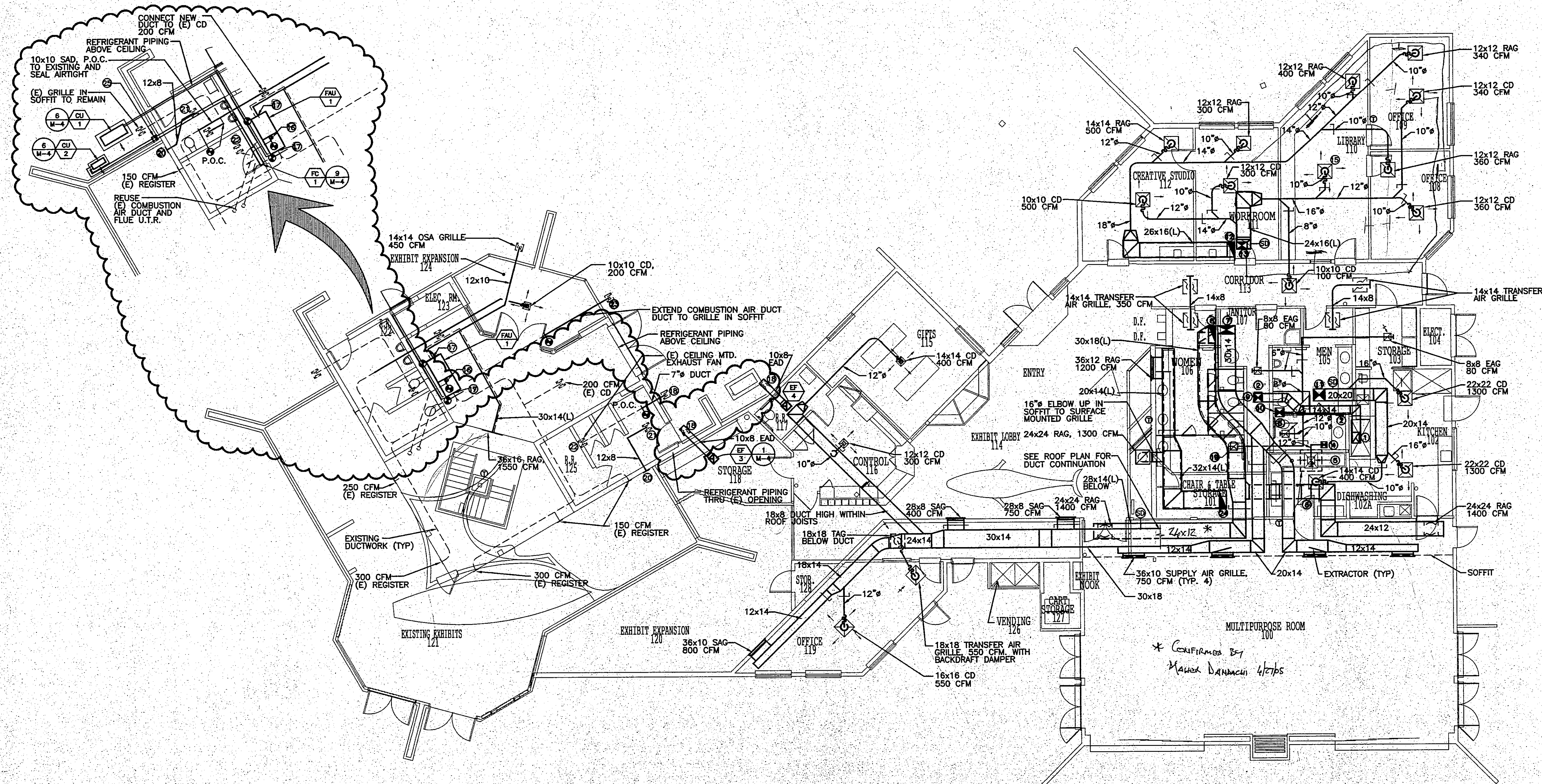


MECHANICAL DEMO PLAN

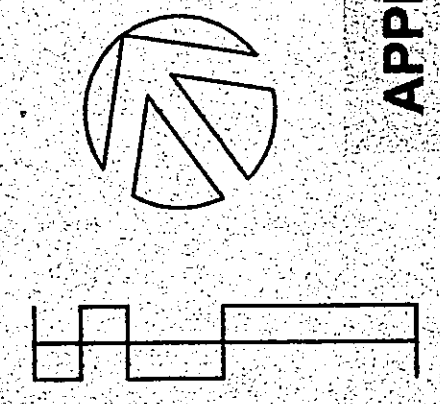
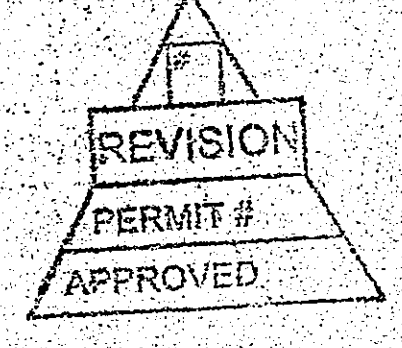
SCALE
1/8" = 1'-0" **1**



- CONSTRUCTION NOTES**
- DUCT CONNECTION TO HOOD, TRANSITION AS REQUIRED. SEE DETAIL 2, SHEET M-4.
 - 12x12 ACCESS PANELS SHALL BE INSTALLED IN THE SIDE OF THE DUCT AT EACH CHANGE IN DIRECTION WITH SIZE AS INDICATED.
 - 12x12 EAG, 300 CFM
 - 10x10 EXHAUST DUCT UP TO EF-5
 - 10x10 EXHAUST AIR DUCT, TRANSITION TO OPENING AT HOOD
 - 36x36 VAPOR HOOD (TYPE II), 450 CFM
 - 30x14 (L) SUPPLY AIR DUCT UP TO AC-1
 - 30x12 (L) RETURN AIR DUCT UP TO AC-1
 - 14x14 EXHAUST DUCT UP TO EF-1, SEE DET. 2, SHEET M-4
 - 14x14 EXHAUST DUCT UP TO EF-2
 - 20x20 SUPPLY AIR DUCT UP TO MAU-1
 - 26x12 (L) RETURN AIR DUCT UP TO AC-2
 - 18x12 (L) SUPPLY AIR DUCT UP TO AC-2
 - NOT USED
 - 14x14 CD, 400 CFM
 - EXTEND (E) FLUE AT P.O.C. WITH NEW 6" CLASS "B" FLUE AND CONNECT TO NEW FAU.
 - FLEXIBLE CONNECTION, DURO-DYNE OR EQUAL @ P.O.C. TO (E) SUPPLY AIR DUCT AND NEW RETURN AIR DUCT.
 - 10x10 GRILL IN SOFFIT
 - 12x12 CD, 350 CFM
 - 14"x10" SIDEWALL GRILLE
 - 12x12 TRANSFER AIR GRILLE
 - RELOCATED (E) CEILING MOUNTED EXHAUST FAN, CLEAN AND LUBRICATE. INTERLOCK FAN OPERATION WITH FAU-1.
 - 6x6 CORROSION RESISTANT SCREEN OF 1/4" WIRE MESH.
 - 30x12 (L) RETURN AIR DUCT UP TO AC-3
 - PROVIDE 22 GA. SHEET METAL ENCLOSURE FOR REFRIGERANT PIPING UP WALL. PAINT PER ARCHITECTURAL SPECIFICATIONS. SEAL REFRIGERANT PIPING THRU WALL WATERIGHT.

- GENERAL SHEET NOTES**
- BALANCE ALL GRILLES AND REGISTERS TO INDICATED AIRFLOWS. ADD BALANCING DAMPERS TO EXISTING DUCTWORK AS NECESSARY.
 - ALL SUPPLY REGISTERS SHALL BE WITH 45° SPREAD ANGLES UNLESS OTHERWISE INDICATED.

APPROVALS
Architect



MECHANICAL FLOOR PLAN

SCALE
1/8" = 1'-0" **2**

11/10/03

RON YEO, FALA ARCHITECT, INC.
500 JOSHUA AVENUE, SUITE 200
CANTON, MA 01921
TEL: 508-548-4449
FAX: 508-548-4449
PATTIUX MARY, AIA, PE, ASSOCIATE ARCHITECT

REGISTERED PROFESSIONAL ENGINEER
STATE OF MASSACHUSETTS
LICENSE NO. 10000
EXPIRES 6/30/05

ETA
ENGINEERING & TECHNICAL ASSOCIATES
1000 WASHINGTON STREET
BOSTON, MA 02111
TEL: 617-552-7777
FAX: 617-552-7778

PLANS PREPARED BY:

REGISTERED PROFESSIONAL ENGINEER
STATE OF MASSACHUSETTS
LICENSE NO. 10000
EXPIRES 6/30/05

POINT VICENTE INTERPRETIVE
CENTER EXPANSION
31501 Palms Verdes Drive, West
Kanchito Valdes Verdes, Ct

Mechanical Floor Plan

DESIGN: BSM
CHECKED: LF
DATE: 2/7/99
SCALE: 1/8" = 1'-0"
JOB NO: 97-123
SHEET: 59 OF 69 SHEETS
M-2