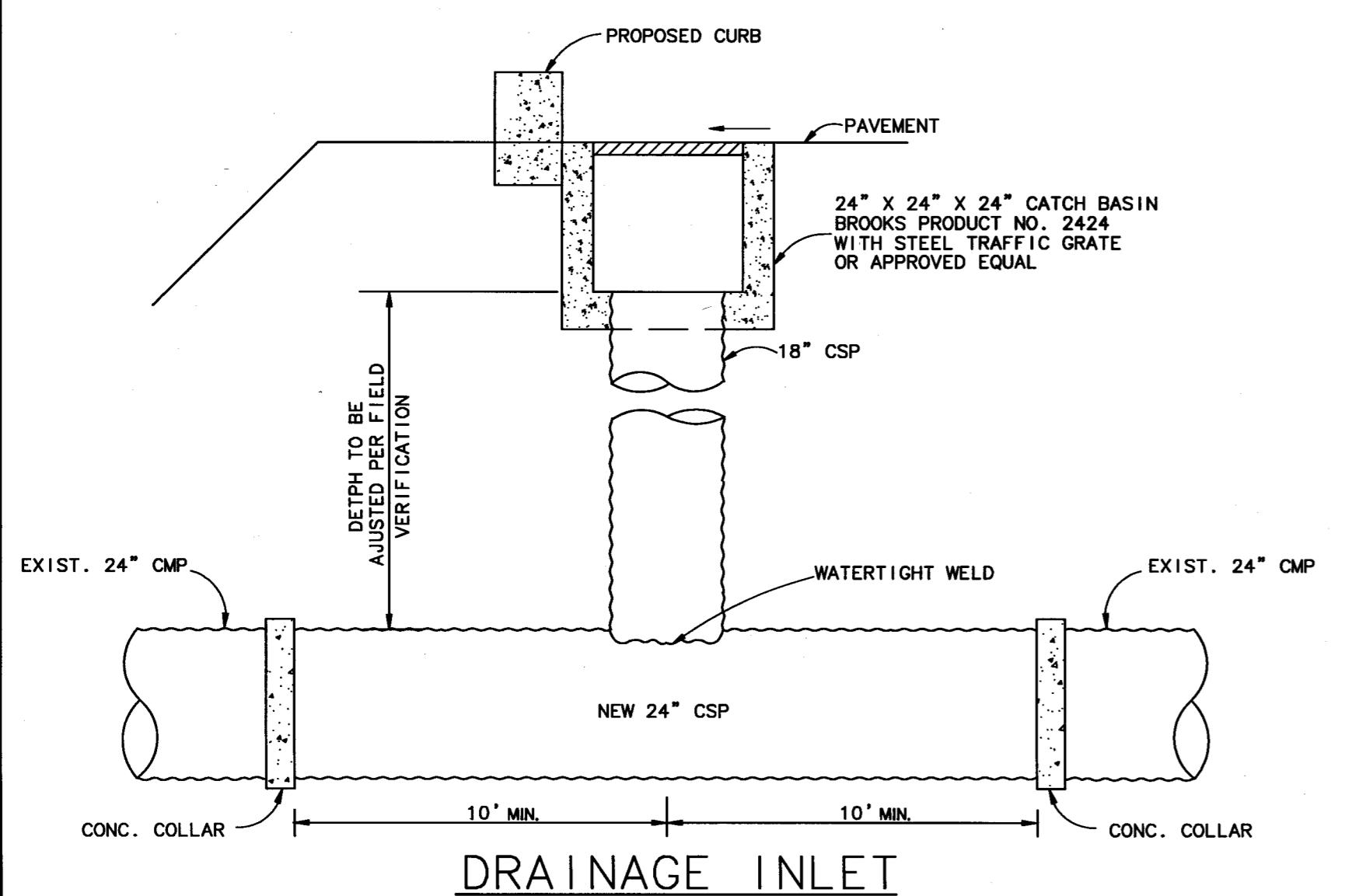
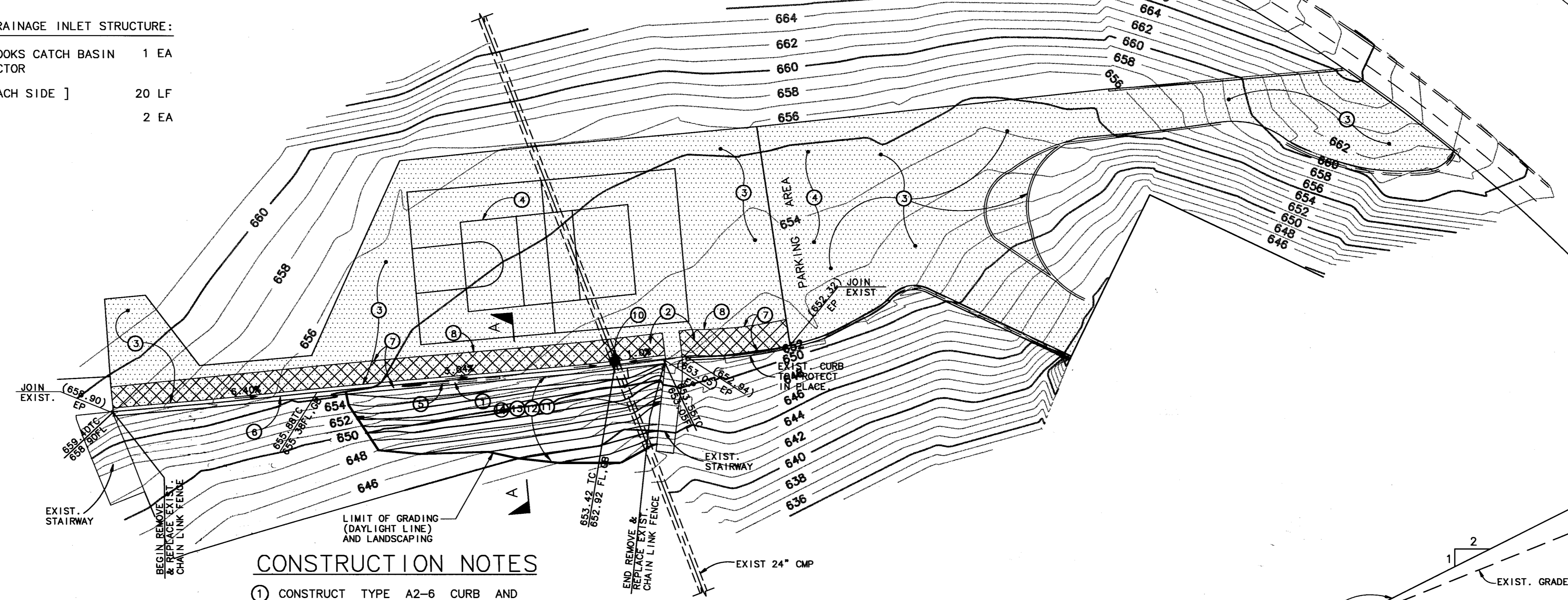
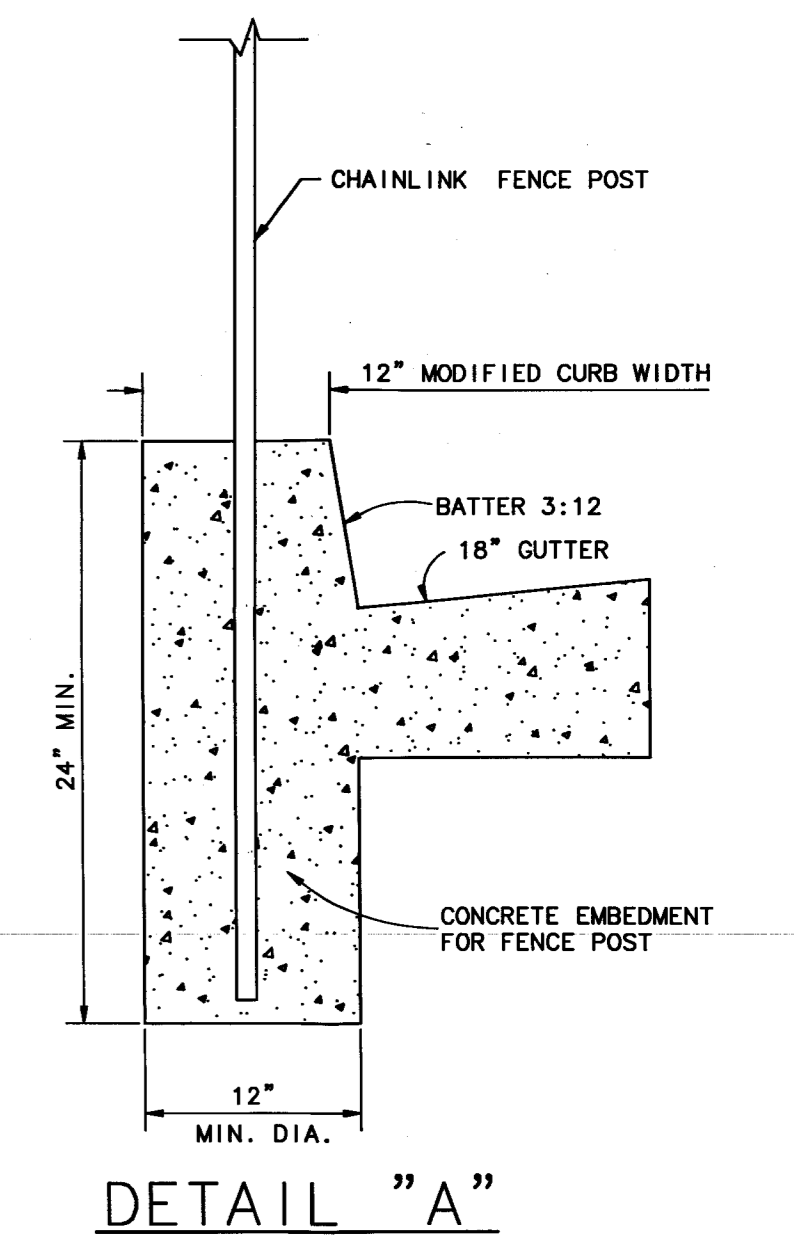
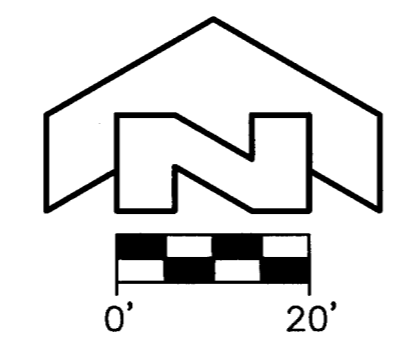


HANGER ET/CA
 SHEET
 2012
 RYAN PARK
 GRADING & DRAINAGE 2-15-16



DRAINAGE INLET
 CONTRACTOR TO REPLACE EXIST. 24\"/>

- ITEMS REQUIRED FOR DRAINAGE INLET STRUCTURE:
- 24" X 24" X 24" BROOKS CATCH BASIN WITH 18" CSP CONNECTOR 1 EA
 - 24" CSP [10' ON EACH SIDE] 20 LF
 - CONCRETE COLLAR 2 EA



CONSTRUCTION NOTES

1. CONSTRUCT TYPE A2-6 CURB AND 18" GUTTER PER A.P.W.A. STANDARD PLAN NO. 120-0. MODIFY CURB WIDTH PER DETAIL "A".
2. CONSTRUCT 4" A.C. PAVEMENT OVER 4" AGGREGATE BASE PER GEOTECHNICAL RECOMMENDATIONS.
3. SLURRY SEAL EXISTING PAVEMENT.
4. RESTRIPE COURT AND PARKING AREA TO MATCH EXISTING STRIPING.
5. REMOVE EXISTING CURB.
6. REMOVE AND REPLACE EXISTING CHAIN LINK FENCE.
7. SAW CUT AND REMOVE EXISTING PAVEMENT TO 24" DEPTH.
8. INSTALL CONSTRUCTION JOINT FILLED WITH POLYFLEX OR EQUIVELANT FLEXIBLE WATER RESISTANT FILLER MATERIAL PER GEOTECHNICAL RECOMMENDATIONS.
9. INSTALL 4" PERFORATED SUBDRAIN PIPE WITH SOLID 4" SOLID SUBDRAIN OUTLET.
10. INSTALL INLET STRUCTURE PER DETAIL SHOWN HEREON.
11. EXCAVATE AND REPLACE WITH RECOMPACTED FILL.
12. SLOPE PREPARATION.
13. CAP-OFF SPRINKLER SYSTEM.

14. THE CONTRACTOR SHALL OBTAIN A SOIL ANALYSIS FROM THE SLOPE FACE AFTER GRADING IS COMPLETE. THIS SOIL ANALYSIS SHALL BE CONDUCTED BY AN APPROVED AGRONOMIC SOILS TESTING LABORATORY APPROVED BY THE PUBLIC WORKS DIRECTOR.

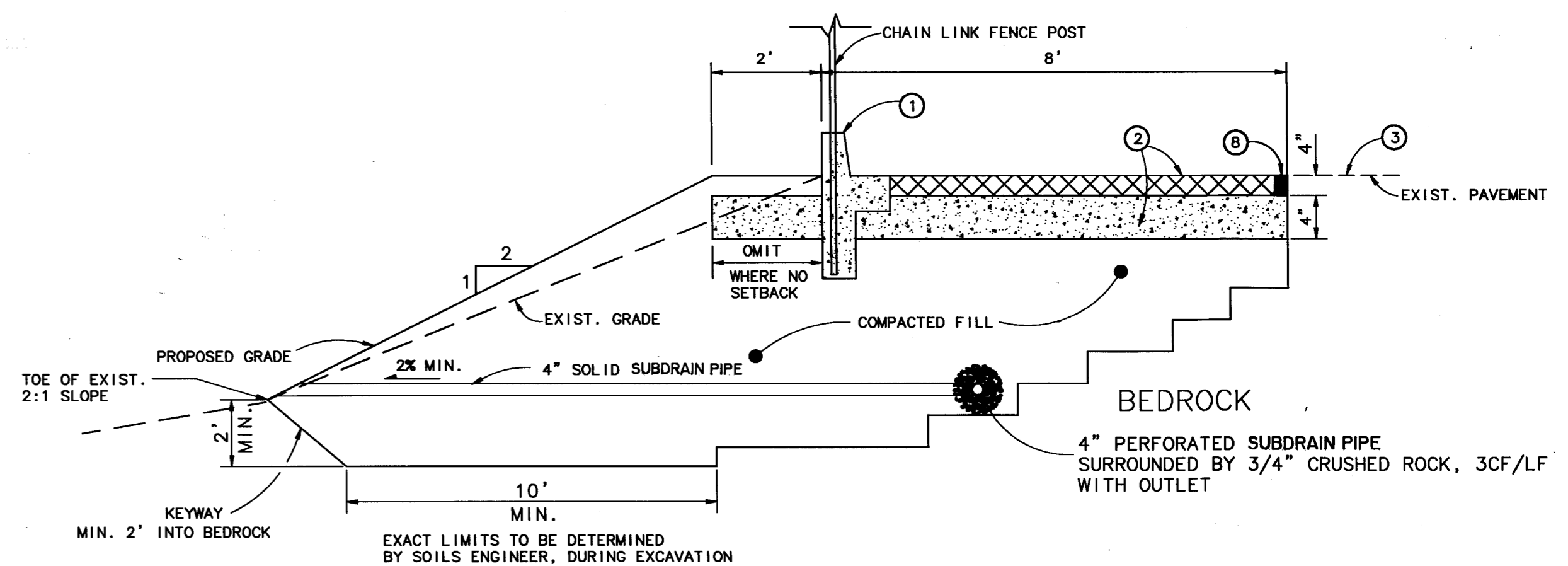
THE SOIL CONDITIONING OF THE PLANTING AREA SHALL INCORPORATE THE RECOMMENDATION OF THE SOIL TESTING LABORATORY.

ALL DISTURBED AREAS SHALL BE SOIL CONDITIONED.

PLANT MATERIAL AND IRRIGATION REPLACEMENT BY OTHERS.

NOTE TO CONTRACTOR:

1. CONTRACTOR TO FIELD VERIFY LOCATION, DEPTH AND CONDITION OF EXISTING 24" CMP DRAINAGE PIPE BEFORE MAKING ANY CONNECTIONS.
2. CONTRACTOR TO NOTIFY THE CITY OF RANCHO PALOS VERDES IMMEDIATELY IF THE PRESENT CONDITION OF EXISTING 24" CMP DRAINAGE PIPE IS NOT SUITABLE TO MAKE ANY CONNECTIONS.
3. CONTRACTOR TO REPLACE EXIST. 24" DRAINAGE PIPE WITH NEW 24" CSP, MIN. 10' ON EACH SIDE OF THE CONNECTION WITH CONCRETE COLLAR.
4. CONTRACTOR TO REPLACE EXIST. 24" CMP IF IN CONFLICT WITH SLOPE REPAIR. CONTRACTOR TO REPLACE SPRINKLER SYSTEM DURING SLOPE REPAIR.
5. CONTRACTOR TO RESTRIPE THE COURT AND PARKING AREA TO MATCH EXISTING STRIPING.



NOTE:
 CONTRACTOR TO REPLACE EXIST 24" CMP IF IN CONFLICT WITH SLOPE REPAIR.
 CONTRACTOR ALSO TO CAP-OFF SPRINKLER SYSTEM DURING SLOPE REPAIR.



SHEET 2 OF 2		COMMUNITY DEVELOPMENT DEPARTMENT	
Dwight & French & Associates 1470 S. VALLEY VISTA DRIVE SUITE 290 DIAMOND BAR, CA 91765 (909) 860-3566		RANCHO PALOS VERDES ROBERT E. RYAN PARK GRADING AND DRAINAGE PLAN	
NO.	REVISIONS	APPROVED BY:	DATE
		SMITA A. DHULDHAYA	2/15/1996
THESE PLANS PREPARED UNDER THE SUPERVISION OF:		APPROVED BY: <i>Robert E. Ryan</i> 20124	
DRAWN BY: CVS		CITY ENGINEER R.C.E. NO.	
CHECKED BY: SD		PROJECT NO: 286095 PLAN NO:	

286095G2.DWG