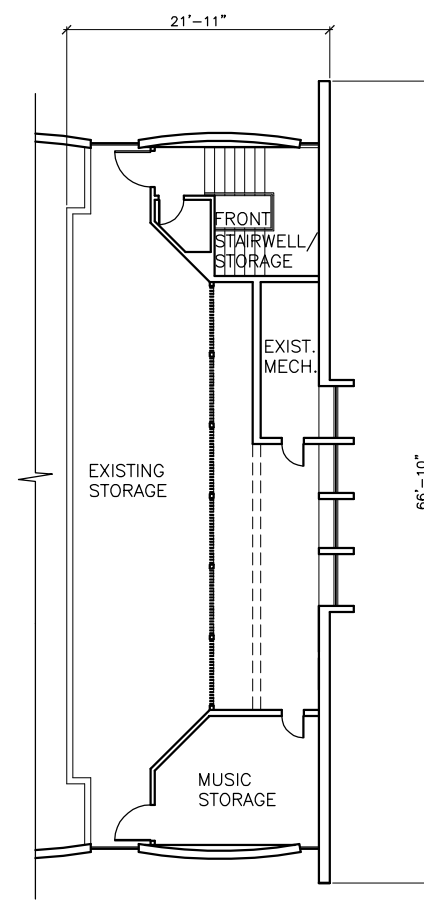
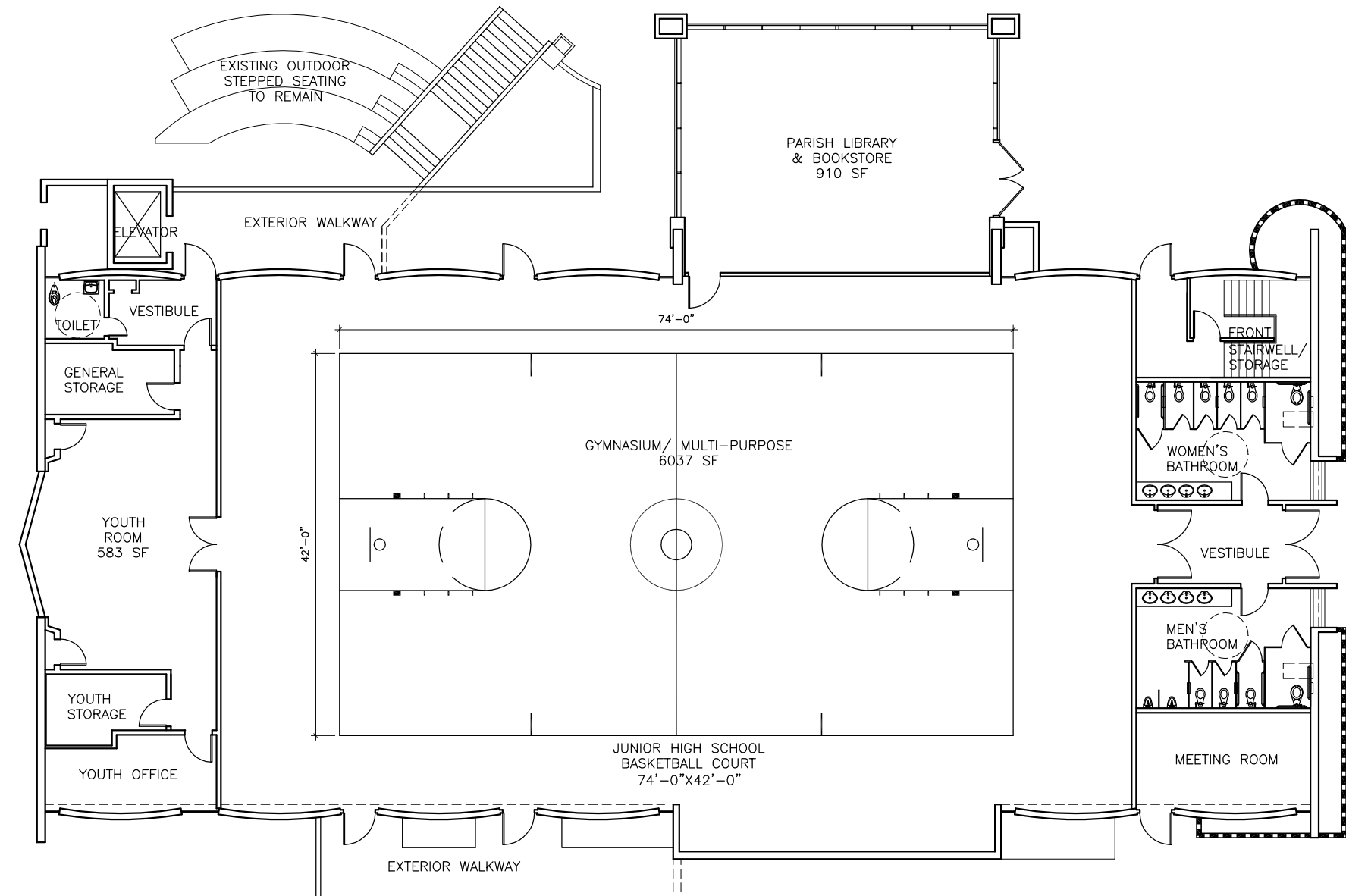


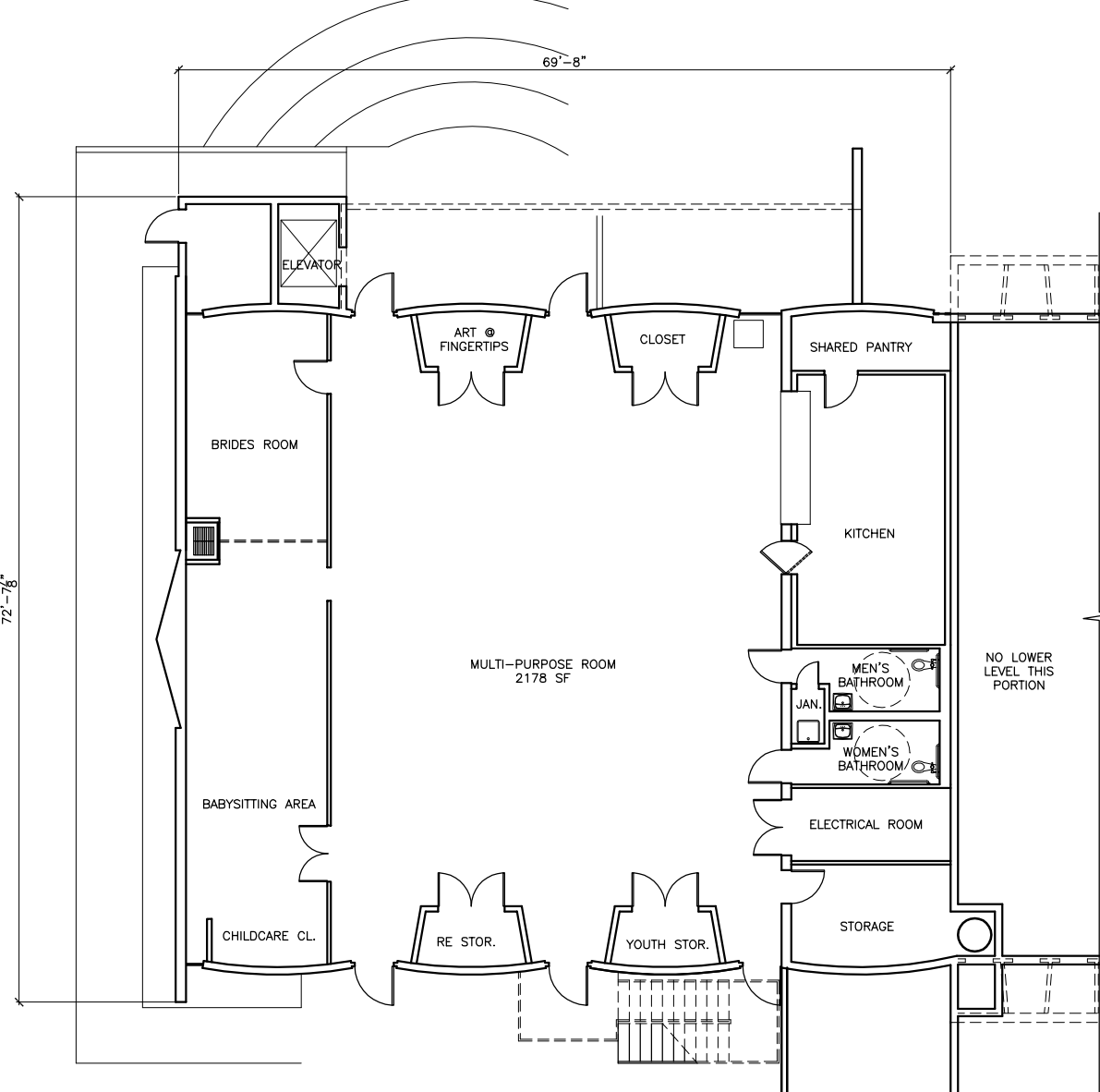
1 EXISTING CHURCH GROUND FLOOR PLAN 9,773 SF  
A2.4 SCALE: 1/8"=1'-0"



2 EXISTING CHURCH CHOIR LOFT 1,174 SF  
A2.4 SCALE: 1/8"=1'-0"



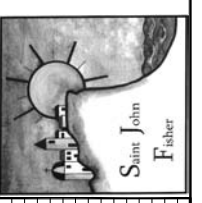
3 PROPOSED REMODELED PARISH ACTIVITY CENTER GROUND FLOOR PLAN 9,773 SF  
A2.4 SCALE: 1/8"=1'-0"



4 EXISTING CHURCH LOWER FLOOR PLAN 4,455 SF  
A2.4 SCALE: 1/8"=1'-0"



St. John Fisher  
5448 Crest Road  
Rancho Palos Verdes, CA 90275



INTERIORS  
HYNDMAN  
ARCHITECTURE  
2811 SOUTH COAST HIGHWAY 101 - SUITE 201, CARLETON, CA 92007 - (760)834-2595

REVISIONS:

EXISTING CHURCH/  
PARISH ACTIVITY CENTER  
FLOOR PLANS

Z:\01\Proj\2006\0606-Palos Verdes\CUP\A2.4-ExistingChurchParishActivityCenterRemodelPlan.dwg, 11/07/2008 12:11:35 PM, Copyright Hyndman & Hyndman Architecture, <<Mr. G>>