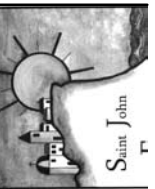




St. John Fisher
5448 Crest Road
Rancho Palos Verdes, CA 90275



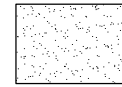

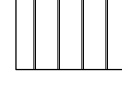




INTERIORS
HYNDMAN
ARCHITECTURE
2811 SOUTH COAST HIGHWAY, 101 - SUITE 201, CAROLINE, CA 92007 (760) 634-2595

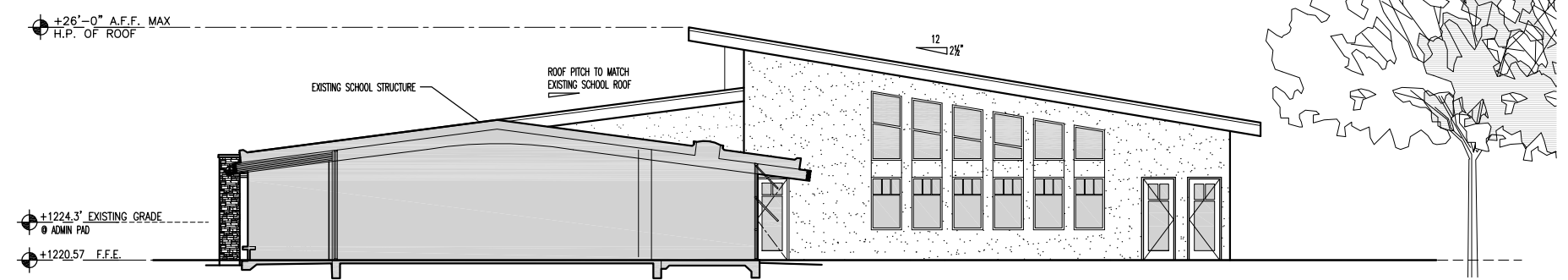
REVISIONS:

ADMINISTRATION
BUILDING EXTERIOR
ELEVATIONS

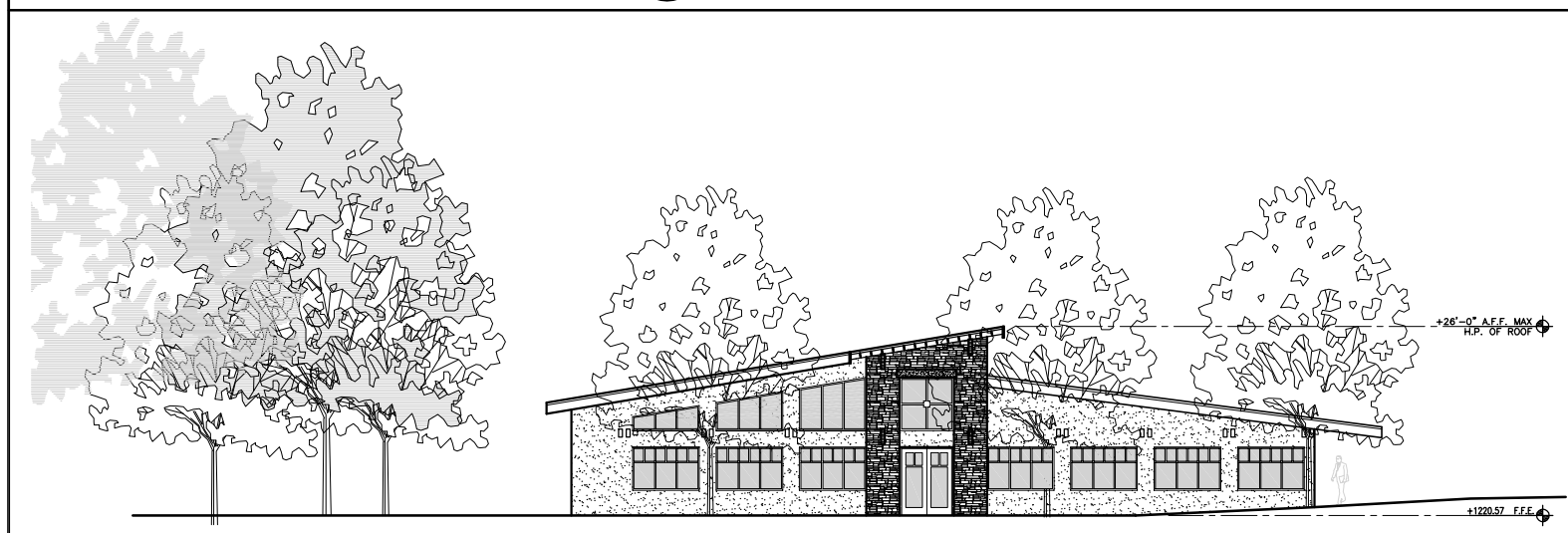
Date: OCTOBER 2008
Sheet
A2.7
Of
Sheets

MATERIALS LEGEND:

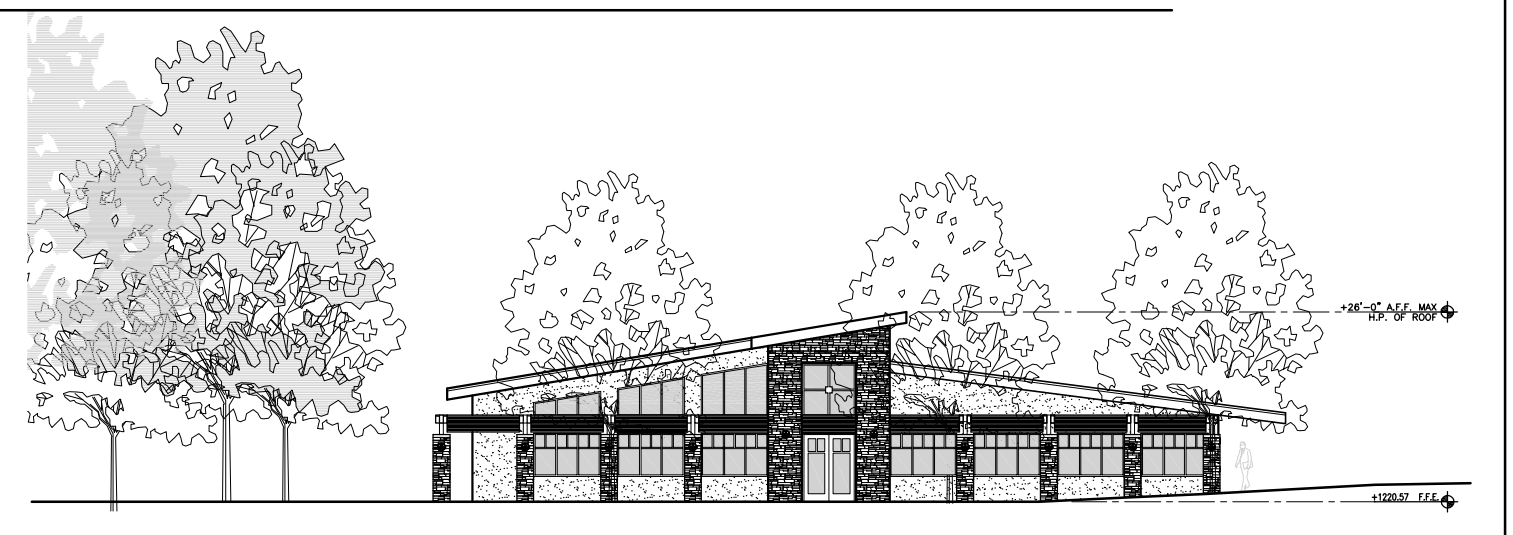
-  NEUTRAL BEIGE/CREAM TONE PLASTER
-  GLASS
-  BRONZE PENNY TONE WEATHERED COPPER STANDING SEAM ROOF
-  NATURAL STONE OR MANUFACTURED STONE TO MATCH PALOS VERDES LIMESTONE IN RANDOM SHAPES
-  NATURAL STONE OR MANUFACTURED STONE TO MATCH PALOS VERDES LIMESTONE IN LEDGE STONE PATTERN OR ACCENT PLASTER COLOR @ OWNER'S DISCRETION
-  GRAYISH GREEN VERMONT SLATE COLORED ROOF TILE
-  GLUED LAMINATED WOOD BEAM IN STAIN FINISH IN CHERRY COLOR TONE
- AFF ABOVE FINISH FLOOR
- FFE FINISH FLOOR ELEVATION



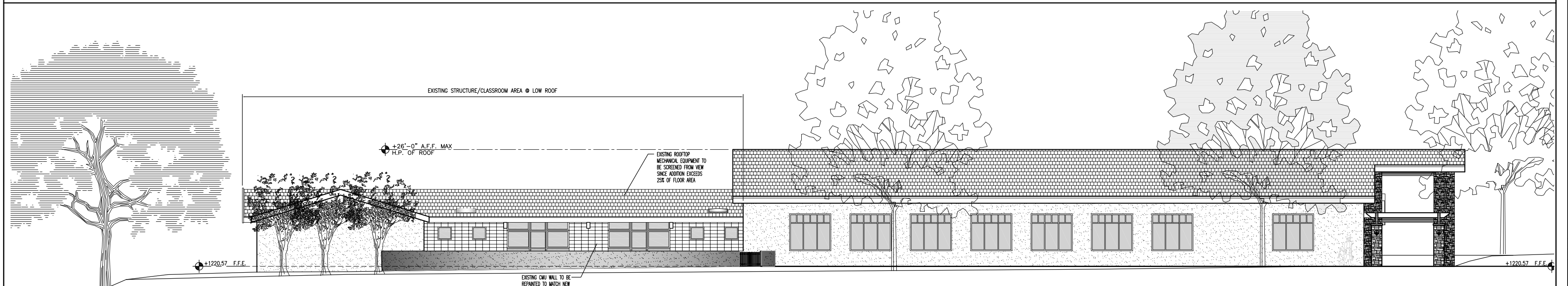
1 NORTH ELEVATION
A2.7 SCALE: 1/8"=1'-0"



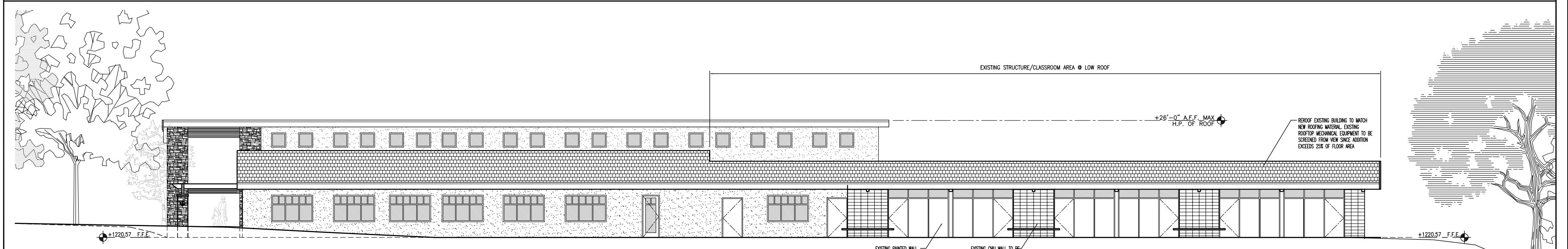
2 SOUTH ELEVATION (W/TRELLIS REMOVED FOR CLARITY)
A2.7 SCALE: 1/8"=1'-0"



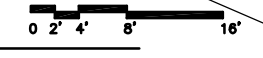
2A SOUTH ELEVATION (W/TRELLIS)
A2.7 SCALE: 1/8"=1'-0"



3 WEST ELEVATION
A2.7 SCALE: 1/8"=1'-0"



4 EAST ELEVATION
A2.7 SCALE: 1/8"=1'-0"



Z:\01Proj\2006\0606-Palos Verdes\CUP\A2.7-NewAdminElevations.dwg, 11/06/2008 4:11:30 PM, Copyright Hyndman & Hyndman Architecture, <<Mr. G>>