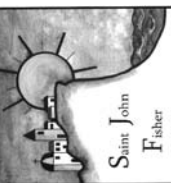




St. John Fisher
 5448 Crest Road
 Rancho Palos Verdes, CA 90275



INTERIORS
HYNDMAN
 ARCHITECTURE
 2611 SOUTH COAST HIGHWAY 101 - SUITE 201, CARDBEE, CA 92007 - (760)834-2595

REVISIONS:

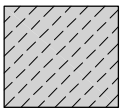

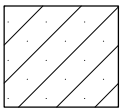
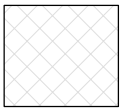

ADMINISTRATION
 BUILDING
 FLOOR PLAN

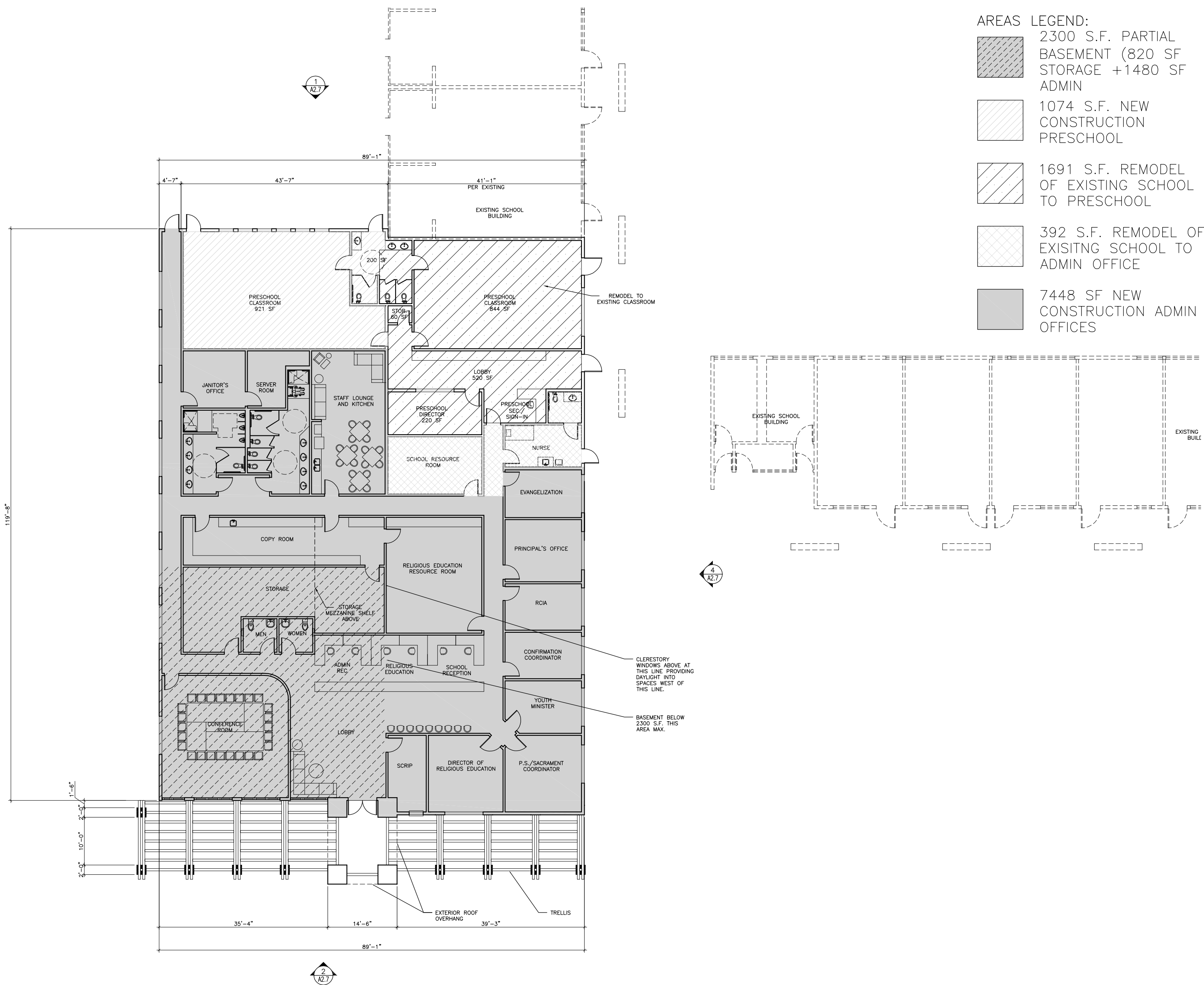
Date OCTOBER 2008

Sheet

A2.5
 Of Sheets

AREAS LEGEND:

-  2300 S.F. PARTIAL BASEMENT (820 SF STORAGE +1480 SF ADMIN)
-  1074 S.F. NEW CONSTRUCTION PRESCHOOL
-  1691 S.F. REMODEL OF EXISTING SCHOOL TO PRESCHOOL
-  392 S.F. REMODEL OF EXISTING SCHOOL TO ADMIN OFFICE
-  7448 SF NEW CONSTRUCTION ADMIN OFFICES



1 ADMINISTRATION BUILDING FLOOR PLAN
 A2.5 SCALE: 1/8"=1'-0"



Z:\01Proj\2006\0606-Palos Verdes\CUP\A2.5-NewAdminFloorPlan.dwg, 11/07/2008 12:14:23 PM, Copyright Hyndman & Hyndman Architecture, <<Mr. G>>