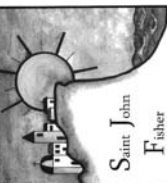




St. John Fisher  
 5448 Crest Road  
 Rancho Palos Verdes, CA 90275

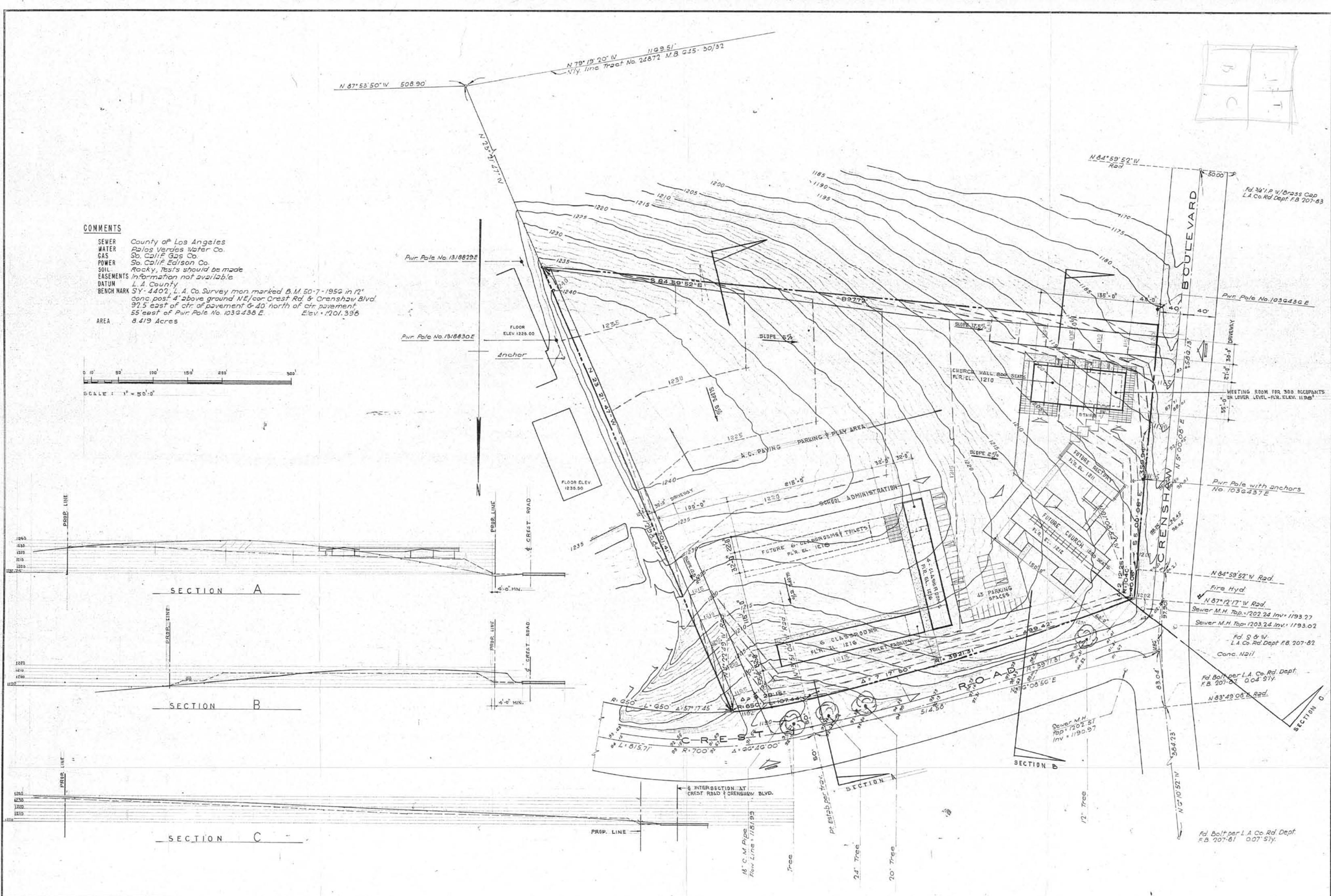


INTERIORS  
**HYNDMAN**  
 ARCHITECTURE  
 2611 SOUTH COAST HIGHWAY 101 - SUITE 201, CARLETON, CA 92007 (760)353-2595

REVISIONS:

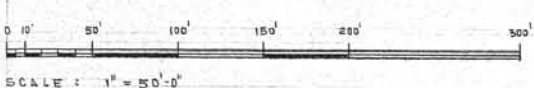
ORIGINAL 1961  
 SITE PLAN

Date OCTOBER 2008  
 Sheet  
 Of A2.13  
 Sheets



**COMMENTS**

SEWER County of Los Angeles  
 WATER Palos Verdes Water Co.  
 GAS So. Calif. Gas Co.  
 POWER So. Calif. Edison Co.  
 SOIL Rocky, tests should be made  
 EASEMENTS Information not available  
 DATUM L.A. County  
 BENCH MARK SY-4402, L.A. Co. Survey man marked B.M. 50-7-1956 in 12" conc. post 4' above ground NE cor Crest Rd & Crenshaw Blvd 97.5' east of ctr of pavement 6-40' north of ctr pavement 55' east of Pwr Pole No. 1039438 E. Elev. 1201.396  
 AREA 8.419 Acres



NO.	DATE	REVISION	BY	CHK.

PSOMAS AND YOUNG SURVEYORS 8021 WILSHIRE BLVD. BEVERLY HILLS CALIF. DATE FEB. 1961 SCALE 1" = 50' FILE NO. 9520	<b>PALOS VERDES PARISH</b>	LEGAL DESCRIPTION PORTION OF LOT 74 OF L.A.C.A. NO 51 ASSESSOR'S MAP BOOK I P.1 COUNTY OF LOS ANGELES CALIFORNIA	<b>GENE VERGE &amp; R. N. CLATWORTHY</b> ARCHITECTS & ASSOCIATES MEMBERS OF THE AMERICAN INSTITUTE OF ARCHITECTS 4342 EAGLE ROCK BLVD., LOS ANGELES 41, CALIF. CL-51891	APPROVED ARCHITECT PROJECT NO. DATE	DRAWN CHECKED SUPERVISOR DATE	SCHEME C-1	<b>7</b>
---	----------------------------	--	--	--	--	------------	----------

Z:\01Proj\2006\0606-Palos Verdes\CUP\A2.13-Original\361SitePlan.dwg, 11/07/2008 10:57:30 AM, Copyright Hyndman & Hyndman Architecture, <Mr. G>